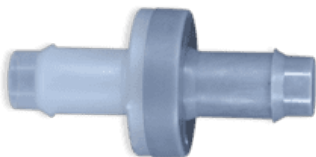


VITON®

MPV SERIES | INDUSTRIAL GRADE CHECK VALVES



These MPV Series Industrial Grade Plastic Diaphragm Check Valves are Manufactured by Pneuline Supply and used in a variety of industries such as: Printing, Robotics, Waste Water, chemical applications, lab and industrial applications. Our custom molding options allow for customer specific needs or requirements which include resin options, connector variations, diaphragm selections, and custom laser marking. To make your product unique, we offer custom laser marking for company brand or for identification purposes I.E. part number sequencing, lot numbers.

Resin options include: Kynar® 720 PVDF, Acetal, Nylon, Glass-filled Nylon, Polypropylene, . Other custom resins are available at the customer’s request.

Barbed connectors are available in: 1/8 inch, 3/16 inch, and 1/4 inch standard flow or 1/4 inch, 5/16 inch, and 3/8 inch high flow.

Diaphragms are made of Fluorosilicone, EPDM, Viton®, or Kalrez® FFKM

SKU	Description
MPV-2B-KK	1/8 Barb PVDF / Kalrez® Check Valve
MPV-2B-KV	1/8 Barb PVDF / FKM Check Valve
MPV-2B-NF	1/8 Barb Nylon / Fluorosilicone Check Valve
MPV-2B-NV	1/8 Barb Nylon / FKM Check Valve
MPV-3B-AF	3/16 Barb Acetal / Fluorosilicone Check Valve
MPV-3B-KV	3/16 Barb PVDF / FKM Check Valve
MPV-3B-NF	3/16 Barb Nylon / Fluorosilicone Check Valve
MPV-3B-NV	3/16 Barb Nylon / FKM Check Valve
MPV-3B-PF	3/16 Barb Polypropylene / Flourosilicone Check Valve
MPV-3B-PV	3/16 Barb Polypropylene / FKM Check Valve
MPV-4B-HKK	1/4 Barb Hi-Flow PVDF / Kalrez Check Valve
MPV-4B-HKV	1/4 Barb Hi-Flow PVDF / FKM Check Valve
MPV-4B-HNF	1/4 Barb Hi-Flow Nylon / Fluorosilicone Check Valve
MPV-4B-HNV	1/4 Barb Hi-Flow PVDF / FKM Check Valve
MPV-4B-KV	1/4 Barb Standard Flow PVDF / FKM Check Valve
MPV-4B-NF	1/4 Barb Nylon / Fluorosilicone
MPV-4B-NV	1/4 Barb Nylon / FKM Check Valve
MPV-4B-PF	1/4 Barb Polypropylene / Fluorosilicone Check Valve

SKU	Description
MPV-4B-PV	1/4 Barb Polypropylene / FKM Check Valve
MPV-5B-AF	5/16 Barb Acetal / Fluorosilicone Check Valve
MPV-5B-KK	5/16 Barb PVDF / Kalrez® Check Valve
MPV-5B-KV	5/16 Barb PVDF / FKM Check Valve
MPV-5B-NF	5/16 Barb Nylon / Fluorosilicone Check Valve
MPV-5B-NV	5/16 Barb Nylon / FKM Check Valve
MPV-6B-KV	3/8 Barb PVDF /FKM Check Valve
MPV-6B-NF	3/8 Barb Nylon / Fluorosilicone Check Valve
MPV-6B-NV	3/8 Barb Nylon / FKM Check Valve



MCV SERIES - CHECK VALVES

The MCV Series Check Valves are available in various materials: White Nylon is standard, with Black Nylon optional; White Polypropylene is standard with Black Polypropylene optional. Black PVDF is also available. O -ring Seals are Buna-N, EPDM, Viton®, Silicone. The standard spring is 302 Stainless Steel with 316 Stainless Steel ball. The maximum operating pressure is 125 psi. and the maximum operating temperature is 140° F. The Standard barb inlet and outlet sizes are for 1/8 inch, 3/16 inch, and 1/4 inch ID tubing. Outlet side is available with a 1/8 Male NPT or ¼ MNPT. PVDF is sold with PTFE seals and a Hastelloy Spring.

Spring Options:

1/2 psi - 302 Stainless
 1 psi - 302 Stainless
 2 psi - 302 Stainless
 3 psi - 302 Stainless

MCV SERIES PRODUCT LIST

Pneuline Part Number	Size	Body	Seal	PSI
MCV-4B-PPE-1	1/4 (4B)	Polypropylene	EPDM	1 PSI
MCV-4B-NV-1/2	1/4 (4B)	Nylon	Viton ®	1/2 PSI
MCV-4B-NV-1	1/4 (4B)	Nylon	Viton ®	1 PSI
MCV-4B3B-NB-2	1/4 (4B) by 3/16 (3B)	Nylon	Buna	2 PSI
MCV-3B-PPV-3	3/16 (3B)	Polypropylene	Viton ®	3 PSI
MCV-3B-PPV-1/2	3/16 (3B)	Polypropylene	Viton ®	1/2 PSI
MCV-3B-PPV-1	3/16 (3B)	Polypropylene	Viton ®	1 PSI

MCV-3B-PPE-2	3/16 (3B)	Polypropylene EPDM	2 PSI
MCV-3B-PPE-1/2	3/16 (3B)	Polypropylene EPDM	1/2 PSI
MCV-3B-PPE-1	3/16 (3B)	Polypropylene EPDM	1 PSI
MCV-3B-NV-1	3/16 (3B)	Nylon Viton ®	1 PSI
MCV-3B-NV-2	3/16 (3B)	Nylon Viton ®	2 PSI
MCV-3B4B-PPV-3	3/16 (3B) by 1/4 (4B)	Polypropylene Viton ®	3 PSI
MCV-3B4B-PPE-3	3/16 (3B) by 1/4 (4B)	Polypropylene EPDM	3 PSI
MCV-2B-PPV-2	1/8 (2B)	Polypropylene Viton ®	2 PSI
MCV-2B-PPV-1/2	1/8 (2B)	Polypropylene Viton ®	1/2 PSI
MCV-2B-PPE-3	1/8 (2B)	Polypropylene EPDM	3 PSI
MCV-2B-PPE-2	1/8 (2B)	Polypropylene EPDM	2 PSI
MCV-2B-PPE-1/2	1/8 (2B)	Polypropylene EPDM	1/2 PSI
MCV-2B-PPE-1	1/8 (2B)	Polypropylene EPDM	1 PSI
MCV-2B-PPB-2	1/8 (2B)	Polypropylene Buna	2 PSI
MCV-2B-NV-1/2	1/8 (2B)	Nylon Viton ®	1/2 PSI
MCV-2B-NV-1	1/8 (2B)	Nylon Viton ®	1 PSI
MCV-2B-NB-1	1/8 (2B)	Nylon Buna	1 PSI
MCV-2B4B-PPV-2	1/8 (2B) by 1/4 (4B)	Polypropylene Viton ®	2 PSI
MCV-2B4B-PPE-1/2	1/8 (2B) by 1/4 (4B)	Polypropylene EPDM	1/2 PSI
MCV-2B2M-PPV-2	1/8 (2B) 1/8 MNPT	Polypropylene Viton ®	2 PSI
MCV-4B4B-PPV-1	1/4 (4B)	Polypropylene Viton ®	1 PSI

LGH SERIES



The LGH Series is a Two-way Ball Valve. It has an operating pressure of 150 psi, and a working temperature up to 140° F. Available in variations of Female and Male GHT, and Female and Male NPT with combinations of these sizes: 3/8 inch, 1/2 inch, and 3/4 inch; all with a .625 through hole. Materials available are Gray PVC and Polypropylene. The PVC and Polypropylene materials are used for chemical resistance applications and are NSF Standard 61 Certified. PVC with EPDM seals are standard. Other seal options are Buna-N and Viton®. Panel Mounts are not available.

SKU	Description
LGH-34F12M	3/4 FNPT by 1/2 MNPT Ball Valve
LGH-34F34MGH	3/4 FNPT by 3/4 MGH Ball Valve
LGH-34F6B	3/4 FNPT by 3/8 Barb Ball Valve
LGH-34F-B	3/4 FNPT by 3/4 FNPT PVC/Buna Ball Valve
LGH-34FF	3/4 FNPT by 3/4 FNPT Ball Valve
LGH-34FGH34F	3/4 FGH by 3/4 FNPT Ball Valve
LGH-34FGH34M	3/4 FGH by 3/4 MNPT Ball Valve
LGH-34FGH6B	3/4 FGH by 3/8 Barb Ball Valve
LGH-34FGH8M	3/4 FGH by 1/2 MNPT Ball Valve

SKU	Description
LGH-34FGHMGH	3/4 FGH by 3/4 MGH Ball Valve
LGH-34FM	3/4 FNPT by 3/4 MNPT Ball Valve
LGH-34FM-E	3/4 FNPT to 3/4 MNPT PVC/EPDM Ball Valve
LGH-34FM-PP-E	3/4 FNPT to 3/4 MNPT Bk Polypropylene/EPDM Ball Valve



FSPV SERIES - POPPET CHECK VALVES

The FSPV Series Poppet Check Valves come in Black PVDF, Black Polypropylene, and White Polypropylene with a choice of Buna-N, EPDM, Viton® or Kalrez® seal. Standard spring is 302 Stainless Steel with a cracking pressure of 1/3 psi. Optional springs of 1 or 7 psi are available. These high-flow valves can be used in pressures up to 125 psi. Hastelloy spring is optional. The inlet and outlet sizes are Female NPT 1/4 inch, 3/8 inch, 1/2 inch, and 3/4 inch and Male NPT size of 1/2 inch.

SKU	Description
FSPV-12F	1/2 FNPT Poly Poppet Check Valve
FSPV-12F12M	1/2 FNPT by 1/2 MNPT Poly Poppet Check Valve
FSPV-12M12M	1/2 MNPT by 1/2 MNPT Poly Poppet Check Valve
FSPV-12M-HV	1/2 MNPT Valve Hastelloy® FKM Poppet Check Valve
FSPV-14F	1/4 FNPT Poly FKM 302 1 psi Poppet Check Valve
FSPV-14F-.3E-WP	1/4 FNPT White Poly EPDM Seals 1/3 psi Poppet Check Valve
FSPV-14F-HV-1	1/4 FNPT Poly FKM Hastelloy® 1 psi Poppet Check Valve
FSPV-34F	3/4 FNPT Poly FKM Disk 1/3 psi Poppet Check Valve
FSPV-34F-11WC	3/4 FNPT Poly FKM 11" C 1/3 psi Poppet Check Valve
FSPV-34F-5WC	3/4 FNPT Poly FKM 5" WC Poppet Check Valve
FSPV-34F-HV	3/4 FNPT Poly FKM Disk Hastelloy® 1/3 psi Poppet Check Valve
FSPV-34F-HV-.7	3/4 FNPT Poly FKM O-Ring Hastelloy® .7 psi Poppet Check Valve
FSPV-34F-HV-1.5	3/4 FNPT Poly FKM O-Ring Hastelloy® 1.5 psi Poppet Check Valve
FSPV-34F-HV-11WC	3/4 FNPT Poly FKM O-Ring Hastelloy® 11 WC Poppet Check Valve
FSPV-38F	3/8 FNPT Poly FKM 302 1/3 psi Poppet Check Valve
FSPV-38F-E-9	3/8 FNPT Poly FKM 302 1 psi Poppet Check Valve
FSPV-38F-HV-2	3/8 FNPT Poly Hastelloy® FKM #2 O-Ring Poppet Check Valve

CVK SERIES - MALE CHECK VALVES



The CVK Series are male-by-male Check Valves made of natural PVDF. It has a 316 Stainless Steel spring and ball Viton® O-ring. Other O-ring options are EPDM and Fluorosilicone (blue). These check valves have a 1-2.5 psi cracking pressure with a maximum operating pressure of 220 psi and a maximum working temperature of 180°F. Available with a Hastelloy® spring and PTFE ball. Available Male NPT thread sizes are: 1/8 inch, 1/4 inch, 3/8 inch, and 1/2 inch.

SKU	Description
CVK-2M	1/8 inch NPT Check Valve PVDF
CVK-4M	1/4 NPT Check Valve PVDF
CVK-6M	3/8 inch NPT Check Valve PVDF
CVK-6M-HPTFE	3/8 inch M Check Valve PVDF, Hastelloy®/PTFE/FKM
CVK-8M	1/2 inch NPT Check Valve PVDF
CVK-8M-HPTFE	1/2 inch M Check Valve PVDF, Hastelloy®/PTFE/FKM



CCV SERIES - POPPET CHECK VALVES

The CCV Series are miniature Poppet Check Valves and Pressure Release Valves available with 1/8 inch Male NPT threads and 1/4 inch compression fittings. The NPT fittings are made of Polypropylene, Nylon and ABS with O-Rings made of Buna-N, EPDM, Viton®, Silicone or Fluorosilicone. The spring pressure is 20 psi. The compression fittings are made of Polypropylene with a .713 OD size.

SKU	Description
CCV-2M14C-1	1/8 MNPT by 1/4 Comp Polypropylene / EPDM 1 psi
CCV-2M14C-1.5	1/8 MNPT by 1/4 Comp Polypropylene / EPDM 1.5 psi
CCV-2M14C-3	1/8 MNPT by 1/4 Comp Polypropylene / EPDM 3 psi
CCV-2M14C-3-PPS	1/8 MNPT by 1/4 Comp Polypropylene / Silicone 3 psi
CCV-2M-3	1/8 MNPT by 1/8 MNPT Polypropylene / EPDM 3 psi
CCV-4C6M-3	1/4 Comp by 3/8 MNPT Polypropylene / EPDM 3 psi
CCV-4M14C-1	1/4 MNPT by 1/4 Comp Polypropylene / EPDM 1 psi
CCV-4M-4	1/4 MNPT by 1/4 MNPT Polypropylene / EPDM 4 psi

INDEX

C

- CCV Series - Poppet Check Valves 5
- CVK Series - Male Check Valves 5

F

- FSPV Series - Poppet Check Valves 4

L

- LGH Series 3

M

- MCV Series - Check Valves 2
- MPV Series | Industrial Grade Check Valves 1