

SILICONE

VC-IG SERIES



The VC-IG Series Plastic Check Valves have housing molded of Polysulfone or Polypropylene with either a POM or Silicone disc. Cracking pressure for these units is .8 H<sup>2</sup>O or .028 psi. The 10-32 inch units have a cracking pressure of 10 H<sup>2</sup>O or .36 psi. These check valves were made to be used in low pressure applications. Reverse flow at 1 psi is available as follows: Polypropylene with Silicone: .20 SCIM, Polysulfone with POM 2.98 SCIM, Polysulfone with POM 1.00 SCIM R2, Polysulfone with Silicone .20 SCIM, and Polysulfone with Silicone .06 SCIM 10-32 inch Female ports only. Maximum pressure is 10 psi excluding the 10-32 inch port which is rated for 75 psi.

SKU	Description
VC-IG-1032F-PSS	1032 Female PS Silicon Check Valve
VC-IG-1B-PPS	1/16 Barb PP Silicone Check Valve
VC-IG-1B-PSC R2	1/16 Barb PS Celcon® Check Valve
VC-IG-1B-PSS	1/16 Barb PS Silicone Check Valve
VC-IG-1S-PPS	1/16 Shaft PP Silicone Check Valve
VC-IG-1S-PSC	1/16 Shaft PS Celcon® Check Valve
VC-IG-1S-PSC R2	1/16 Shaft PS Celcon® Check Valve
VC-IG-1S-PSS	1/16 Shaft PS Silicone Check Valve
VC-IG-2B-PPS	1/8 Barb PP Silicone Check Valve
VC-IG-2B-PSC R2	1/8 Barb PS Celcon® Check Valve
VC-IG-2B-PSS	1/8 Barb PS Silicone Check Valve

QCD SERIES - LUER DUCKBILL CHECK VALVES



The QCD Series Luer Check Valves are made of Polycarbonate and have a Silicone duck bill. The low cracking pressure is 0.433 psi, which determines when the component starts to open. The OD sizes are: 5/64 inch, 7/64 inch, and 9/64 inch. Also available with female and male Luer Locks.

SKU	Description
QCD-564	5/64 inch OD Tubing Polycarbonate Luer Check Valve
QCD-764	7/64 inch OD Tubing Polycarbonate Luer Check Valve
QCD-964	9/64 inch OD Tubing Polycarbonate Luer Check Valve
QCD-FM	Female by Male Luer Lock Polycarbonate Check Valve

MCV SERIES - CHECK VALVES



The MCV Series Check Valves are available in various materials: White Nylon is standard, with Black Nylon optional; White Polypropylene is standard with Black Polypropylene optional. Black PVDF is also available. O -ring Seals are Buna-N, EPDM, Viton®, Silicone. The standard spring is 302 Stainless Steel with 316 Stainless Steel ball. The maximum operating pressure is 125 psi. and the maximum operating temperature is 140° F. The Standard barb inlet and outlet sizes are for 1/8 inch, 3/16 inch, and 1/4 inch ID tubing. Outlet side is available with a 1/8 Male NPT or ¼ MNPT. PVDF is sold with PTFE seals and a Hastelloy Spring.

**Spring Options:**  
1/2 psi - 302 Stainless  
1 psi - 302 Stainless  
2 psi - 302 Stainless  
3 psi - 302 Stainless

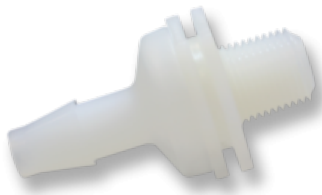
MCV SERIES PRODUCT LIST

Pneuline Part Number	Size	Body	Seal	PSI
MCV-4B-PPE-1	1/4 (4B)	Polypropylene	EPDM	1 PSI
MCV-4B-NV-1/2	1/4 (4B)	Nylon	Viton ®	1/2 PSI
MCV-4B-NV-1	1/4 (4B)	Nylon	Viton ®	1 PSI

# PNEULINE SUPPLY INC.

MCV-4B3B-NB-2	1/4 (4B) by 3/16 (3B)	Nylon	Buna	2 PSI
MCV-3B-PPV-3	3/16 (3B)	Polypropylene	Viton ®	3 PSI
MCV-3B-PPV-1/2	3/16 (3B)	Polypropylene	Viton ®	1/2 PSI
MCV-3B-PPV-1	3/16 (3B)	Polypropylene	Viton ®	1 PSI
MCV-3B-PPE-2	3/16 (3B)	Polypropylene	EPDM	2 PSI
MCV-3B-PPE-1/2	3/16 (3B)	Polypropylene	EPDM	1/2 PSI
MCV-3B-PPE-1	3/16 (3B)	Polypropylene	EPDM	1 PSI
MCV-3B-NV-1	3/16 (3B)	Nylon	Viton ®	1 PSI
MCV-3B-NV-2	3/16 (3B)	Nylon	Viton ®	2 PSI
MCV-3B4B-PPV-3	3/16 (3B) by 1/4 (4B)	Polypropylene	Viton ®	3 PSI
MCV-3B4B-PPE-3	3/16 (3B) by 1/4 (4B)	Polypropylene	EPDM	3 PSI
MCV-2B-PPV-2	1/8 (2B)	Polypropylene	Viton ®	2 PSI
MCV-2B-PPV-1/2	1/8 (2B)	Polypropylene	Viton ®	1/2 PSI
MCV-2B-PPE-3	1/8 (2B)	Polypropylene	EPDM	3 PSI
MCV-2B-PPE-2	1/8 (2B)	Polypropylene	EPDM	2 PSI
MCV-2B-PPE-1/2	1/8 (2B)	Polypropylene	EPDM	1/2 PSI
MCV-2B-PPE-1	1/8 (2B)	Polypropylene	EPDM	1 PSI
MCV-2B-PPB-2	1/8 (2B)	Polypropylene	Buna	2 PSI
MCV-2B-NV-1/2	1/8 (2B)	Nylon	Viton ®	1/2 PSI
MCV-2B-NV-1	1/8 (2B)	Nylon	Viton ®	1 PSI
MCV-2B-NB-1	1/8 (2B)	Nylon	Buna	1 PSI
MCV-2B4B-PPV-2	1/8 (2B) by 1/4 (4B)	Polypropylene	Viton ®	2 PSI
MCV-2B4B-PPE-1/2	1/8 (2B) by 1/4 (4B)	Polypropylene	EPDM	1/2 PSI
MCV-2B2M-PPV-2	1/8 (2B) 1/8 MNPT	Polypropylene	Viton ®	2 PSI
MCV-4B4B-PPV-1	1/4 (4B)	Polypropylene	Viton ®	1 PSI

CMKV SERIES



The CMKV Series Plastic Check Valves are 1/8 inch Male NPT by Barb sizes of 1/8 inch, 3/16 inch, 1/4 inch, and 3/8 inch. The flow is from thread to barb. Material / Disc combinations are available in PVDF with FKM, Polypropylene with FKM, Polycarbonate with Neoprene, Polycarbonate with Silicone, Nylon with Silicone, and Nylon with Neoprene.

SKU	Description
CMKV-18B	1/8 MNPT by 1/8 Barb PVDF/FKM Check Valve
CMKV-14B-NS	1/8 MNPT by 1/4 Barb Nylon/Silicone Check Valve
CMKV-316B	1/8 MNPT by 3/16 Barb PVDF/FKM Check Valve

CIS SERIES - ACRYLIC DIAPHRAGM POPPET CHECK VALVES



This is a non-barbed Check Valve with a white tubing port inlet and clear tubing port outlet. The body is made of Acrylic with a blue Silicone diaphragm. This check valve is pressure rated at 45 psi. The port sizes are both .130" and will accommodate 1/16" ID soft Silicone tubing as well as other tubing of 1/8" and 3/32" ID. It is manufactured in an ISO Class 8 Cleanroom and is Gamma, E-beam and EtO sterilizable. This valve is made of Class VI approved materials, it is ultrasonically welded and is 100% inline tested for backflow and weld leaks.

Acrylic Diaphragm Poppet Check Valves

SKU	Description
CIS-6383	Check Valve .130 port Acrylic/Silicone .29CP

## CDV NON-BARBED CHECK VALVE (POLYCARBONATE AND ACRYLIC AVAILABLE)



This is a non-barbed Acrylic or Polycarbonate Check Valve that has a Silicone duck bill. This is a normally open, one-way check valve. It prevents back flow leakage with minimal pressure. The ends of the ports measure .134 to accommodate 1/8" ID tubing. These fittings are also available with male and female Luer Locks.

SKU	Description
CDV-125	1/8 inch ID Acrylic Luer Duckbill Check Valve
CDV-125MLL	1/8 inch ID to Male Luer Lock Acrylic Duckbill Check Valve
CDV-125-PC	1/8 inch ID Polycarbonate Duckbill Check Valve
CDV-18	1/8 inch ID Tubing Acrylic Duckbill Check Valve
CDV-FL-125	1/8 inch ID to Female Luer Lock Acrylic Duckbill Check Valve
CDV-FLL125	Female Luer Lock by .125
CDV-FLLML	Female Luer Lock to Male Slip Luer Acrylic Duckbill Check Valve
CDV-FLLMLL	Female Luer Lock to Male Luer Lock Acrylic Duckbill Check Valve
CDV-ML	1/8 inch ID Male Luer Acrylic Duckbill Check Valve



## CCV SERIES - POPPET CHECK VALVES

The CCV Series are miniature Poppet Check Valves and Pressure Release Valves available with 1/8 inch Male NPT threads and 1/4 inch compression fittings. The NPT fittings are made of Polypropylene, Nylon and ABS with O-Rings made of Buna-N, EPDM, Viton®, Silicone or Fluorosilicone. The spring pressure is 20 psi. The compression fittings are made of Polypropylene with a .713 OD size.

SKU	Description
CCV-2M14C-1	1/8 MNPT by 1/4 Comp Polypropylene / EPDM 1 psi
CCV-2M14C-1.5	1/8 MNPT by 1/4 Comp Polypropylene / EPDM 1.5 psi
CCV-2M14C-3	1/8 MNPT by 1/4 Comp Polypropylene / EPDM 3 psi
CCV-2M14C-3-PPS	1/8 MNPT by 1/4 Comp Polypropylene / Silicone 3 psi
CCV-2M-3	1/8 MNPT by 1/8 MNPT Polypropylene / EPDM 3 psi
CCV-4C6M-3	1/4 Comp by 3/8 MNPT Polypropylene / EPDM 3 psi
CCV-4M14C-1	1/4 MNPT by 1/4 Comp Polypropylene / EPDM 1 psi
CCV-4M-4	1/4 MNPT by 1/4 MNPT Polypropylene / EPDM 4 psi

BBCV SERIES



The BBCV Series Check Valve has a Male Slip Luer with 30 psi back pressure and 1/4 psi inlet cracking pressure. This series comes in ABS or Polycarbonate housing, both with Silicone Discs.

---

SKU	Description
BBCV-MLFL-ABS	Male Luer by Female Luer ABS Check Valve .25 psi Crack
BBCV-MLFL-01-ABS	Male Luer by Female Luer ABS Check Valve .01 psi Crack
BBCV-MLML-ABS	Male Luer by Male Luer ABS Check Valve .25 psi Crack

## INDEX

### **B**

BBCV Series 6

### **C**

CCV Series - Poppet Check Valves 5

CDV NON-BARBED CHECK VALVE (POLYCARBONATE AND ACRYLIC AVAILABLE) 5

CIS Series - Acrylic Diaphragm Poppet Check Valves 4

CMKV Series 4

### **M**

MCV Series - Check Valves 2

### **Q**

QCD Series - Luer Duckbill Check Valves 2

### **V**

VC-IG Series 1