

NEOPRENE

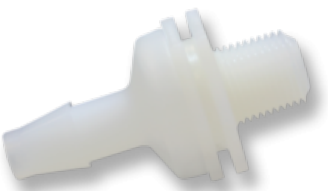
CSP SERIES - POLYETHYLENE CHECK VALVES



The CSP Series Check Valves have a Polyethylene housing with a Neoprene disc for the 1/4-inch size and a Polyethylene disc for the 3/8-inch size. The maximum pressure for these check valves is 20 psi.

SKU	Description
CSP-38	3/8 inch to 9/16 inch ID Polypropylene Check Valve

CMKV SERIES



The CMKV Series Plastic Check Valves are 1/8 inch Male NPT by Barb sizes of 1/8 inch, 3/16 inch, 1/4 inch, and 3/8 inch. The flow is from thread to barb. Material / Disc combinations are available in PVDF with FKM, Polypropylene with FKM, Polycarbonate with Neoprene, Polycarbonate with Silicone, Nylon with Silicone, and Nylon with Neoprene.

SKU	Description
CMKV-18B	1/8 MNPT by 1/8 Barb PVDF/FKM Check Valve
CMKV-14B-NS	1/8 MNPT by 1/4 Barb Nylon/Silicone Check Valve
CMKV-316B	1/8 MNPT by 3/16 Barb PVDF/FKM Check Valve

INDEX

C

CMKV Series 1  
CSP Series - Polyethylene Check Valves 1