

FORGED

MBT SERIES



The MBT Series is a Brass male branch tee. Available Male and Female NPT thread sizes are: 1/8 inch, 1/4 inch, 3/8 inch, 1/2 inch, and 3/4 inch. It is available forged, barstock and nickel-plated (noted below).

| SKU | Description |
|------------|---|
| MBT-2M2F | 1/8 MNPT by 1/8 FNPT Male Branch Tee B F NP |
| MBT-4M4F | 1/4 MNPT by 1/4 FNPT Male Branch Tee B F NP |
| MBT-6M6F | 3/8 MNPT by 3/8 FNPT Male Branch Tee B NP |
| MBT-8M8F | 1/2 MNPT by 1/2 FNPT Male Branch Tee B NP |
| MBT-12M12F | 3/4 MNPT by 3/4 FNPT Male Branch Tee B |



MBBV FULL PORT 2-WAY BRASS BALL VALVE

The MBBV Series are standard Ported Forged Brass WOG Ball Valves that can withstand up to 400 psi with a chrome-plated ball and Buna O-rings. NSF 61, Full port available, 948 NSF full port Male by Female also available.

| SKU | Description |
|----------|--|
| MBBV-8F | 1/2 inch Female Full Port Brass 600 psi WOG Ball Valve |
| MBBV-4F | 1/4 inch Female Brass Ball Valve 600 psi Ball Valve |
| MBBV-6F | 3/8 inch Female Brass Ball Valve 600 psi Ball Valve |
| MBBV-12F | 3/4 inch Female Brass Ball Valve 600 psi Ball Valve |
| MBBV-16F | 1 inch Female Brass Ball Valve 600 psi Ball Valve |
| MBBV-20F | 1-1/4 inch Female Brass Ball Valve 600 psi Ball Valve |
| MBBV-24F | 1-1/2 inch Female Brass Ball Valve 600 psi Ball Valve |
| MBBV-32F | 2 inch Female Brass Ball Valve 600 psi Ball Valve |
| MBBV-40F | 2-1/2 inch Female Brass Ball Valve 600 psi Ball Valve |
| MBBV-48F | 3 inch Female Brass Ball Valve 600 psi Ball Valve |
| MBBV-64F | 4 inch Female Brass Ball Valve 600 psi Ball Valve |

MASV MINI FORGED TWO-WAY BALL VALVES



The MASV series are forged Brass Ball Valves with NBR O-rings 200 psi WOG

| SKU | Description |
|-----------|---|
| MASV-2M2F | 1/8 MNPT by 1/8 FNPT Forged Mini Ball Valve |
| MASV-2M4F | 1/8 MNPT by 1/4 FNPT Forged Mini Ball Valve |
| MASV-4M4F | 1/4 MNPT by 1/4 FNPT Forged Mini Ball Valve |
| MASV-6M6F | 3/8 MNPT by 3/8 FNPT Forged Mini Ball Valve |
| MASV-4M6F | 1/4 MNPT by 3/8 FNPT Forged Mini Ball Valve |
| MASV-8M8F | 1/2 MNPT by 1/2 FNPT Forged Mini Ball Valve |
| MASV-2M | 1/8 MNPT by 1/8 MNPT Forged Mini Ball Valve |
| MASV-4M | 1/4 MNPT by 1/4 MNPT Forged Mini Ball Valve |
| MASV-6M | 3/8 MNPT by 3/8 MNPT Forged Mini Ball Valve |
| MASV-8M | 1/2 MNPT by 1/2 MNPT Forged Mini Ball Valve |
| MASV-4B8M | 1/4 Barb by 1/8 MNPT Forged Mini Ball Valve |
| MASV-4B4M | 1/4 Barb by 1/4 MNPT Forged Mini Ball Valve |
| MASV-6B4M | 3/8 Barb by 1/4 MNPT Forged Mini Ball Valve |
| MASV-6B6M | 3/8 Barb by 3/8 MNPT Forged Mini Ball Valve |
| MASV-8B8M | 1/2 Barb by 1/2 MNPT Forged Mini Ball Valve |

BSTE SERIES



The BSTE Series are 90° Brass Street Elbows, available as both forged and barstock. The barstock fitting is available in a short version. The forged is available as a reducer. Available MNPT and FNPT thread sizes are 1/8 inch, 1/4 inch, 3/8 inch, 1/2 inch, and 3/4 inch. The temperature range is -65° F to 250° F. The operating pressure is 1200 psi. They can be used for grease, fuels, refrigeration and hydraulic applications. They meet ASA, ASME and SAE specifications.

| SKU | Description |
|-------------|---|
| BSTE-2-S-NP | 1/8 inch NPT Nickel Plated Short Street Elbow |
| BSTE-2 | 1/8 inch MNPT by 1/8 inch FNPT Brass Street Elbow |
| BSTE-4 | 1/4 inch MNPT by 1/4 inch FNPT Brass Street Elbow |
| BSTE-6 | 3/8 inch MNPT by 3/8 inch FNPT Brass Street Elbow |
| BSTE-8 | 1/2 inch MNPT by 1/2 inch FNPT Brass Street Elbow |
| BSTE-12 | 3/4 inch MNPT by 3/4 inch FNPT Brass Street Elbow |
| BSTE-2M4F | 1/8 inch MNPT by 1/4 inch FNPT Brass Street Elbow |

| SKU | Description |
|-----------|---|
| BSTE-4M6F | 1/4 inch MNPT by 3/8 inch FNPT Brass Street Elbow |
| BSTE-4M2F | 1/4 inch MNPT by 1/8 inch FNPT Brass Street Elbow Reducer |

BSE45 SERIES



The BSE45 Series are 45° Brass Elbows available as both forged and barstock. The temperature range is -65° F to 250° F. The operating pressure is 1200 psi. They can be used for grease, fuels, refrigeration and hydraulic applications. They meet ASA, ASME and SAE specifications.

| SKU | Description |
|--------------|--|
| BSE45-2M2F | 1/8 MNPT by 1/8 FNPT Brass 45° Elbow B F |
| BSE45-4M4F | 1/4 MNPT by 1/4 FNPT Brass 45° Elbow B F |
| BSE45-6M6F | 3/8 MNPT by 3/8 FNPT Brass 45° Elbow B F |
| BSE45-8M8F | 1/2 MNPT by 1/2 FNPT Brass 45° Elbow B |
| BSE45-12M12F | 3/4 MNPT by 3/4 FNPT Brass 45° Elbow B |

| SKU | Description |
|--------------|--|
| BSE45-2M2F | 1/8 MNPT by 1/8 FNPT Brass 45° Elbow B F |
| BSE45-4M4F | 1/4 MNPT by 1/4 FNPT Brass 45° Elbow B F |
| BSE45-6M6F | 3/8 MNPT by 3/8 FNPT Brass 45° Elbow B F |
| BSE45-8M8F | 1/2 MNPT by 1/2 FNPT Brass 45° Elbow B |
| BSE45-12M12F | 3/4 MNPT by 3/4 FNPT Brass 45° Elbow B |



BME SERIES

The BME Series is a 90° Brass forged Elbow, available in both equal and reducing sizes. Available Male NPT thread sizes are 1/8 inch, 1/4 inch, 3/8 inch, and 1/2 inch. The temperature range is -65° F to 250° F. The operating pressure is 1200 psi. They can be used for grease, fuels, refrigeration and hydraulic applications. They meet ASA, ASME and SAE specifications. Nickel-Plated Brass is available.

| SKU | Description |
|---------|---|
| BME-2 | 1/8 MNPT Forged Brass Elbow NP |
| BME-4 | 1/4 MNPT Forged Brass Elbow NP |
| BME-6 | 3/8 MNPT Forged Brass Elbow NP |
| BME-8 | 1/2 MNPT Forged Brass Elbow NP |
| BME-8-4 | 1/2 MNPT by 1/4 MNPT Forged Elbow Reducer |
| BME-6-4 | 3/8 MNPT by 1/4 MNPT Forged Elbow Reducer |
| BME-8-6 | 3/8 MNPT by 1/4 MNPT Forged Elbow Reducer |



BHT SERIES

The BHT Series is a forged Brass multi-barbed Tee connector. Available barb sizes are 1/8 inch, 1/4 inch, and 3/4 inch. The working temperature range is -40° F to 160° F. Maximum working pressure is 150 psi. This fitting is designed for use with a hose clamp.

| SKU | Description |
|--------|---|
| BHT-2 | 1/8 inch Brass Multi-Barbed Tee Connector |
| BHT-4 | 1/4 inch Brass Multi-Barbed Tee Connector |
| BHT-34 | 3/4 inch Brass Multi-Barbed Tee Connector |

BHME SERIES



The BHME Series is a forged Brass multi-barbed 90° Elbow Adapter with male NPT threads. Available MNPT thread sizes range from 1/8 inch to 1 inch. Available barb sizes range from 3/16 inch to 3/4 inch. Flow can be equal or reducing. The working temperature range is -40° to 160° and the working pressure is 150 psi. Barstock is optional for some sizes (see list below).

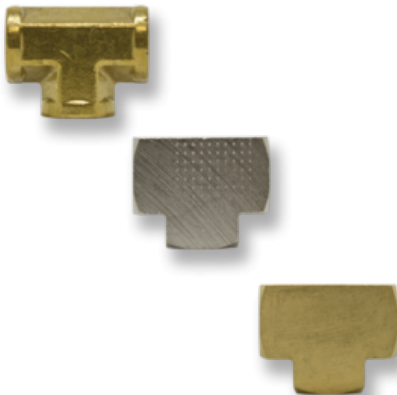
| SKU | Description |
|----------------|---|
| BHME-2M3B | 1/8 MNPT by 3/16 Hose Barb Elbow Forged |
| BHME-2M4B | 1/8 MNPT By 1/4 Hose Barb Elbow Forged B |
| BHME-2M5B | 1/8 MNPT By 5/16 Hose Barb Elbow Forged |
| BHME-2M6B | 1/8 MNPT By 3/8 Barb Elbow Forged |
| BHME-38M18B-R2 | 3/8 MNPT By 1/8 Hose Barb Elbow Forged 2 Piece Unit |
| BHME-4M3B | 1/4 MNPT by 3/16 Hose Barb Elbow Forged |
| BHME-4M4B | 1/4 MNPT By 1/4 Hose Barb Elbow Forged B |
| BHME-4M5B | 1/4 MNPT by 5/16 Hose Barb Elbow Forged |
| BHME-4M6B | 1/4 MNPT by 3/8 Hose Barb Elbow Forged B |
| BHME-4M8B | 1/4 MNPT By 1/2 Hose Barb Elbow Forged |
| BHME-6M4B-B | 3/8 MNPT By 1/4 Hose Barb Elbow Barstock |
| BHME-6M5B | 3/8 MNPT By 5/16 Hose Barb Elbow Forged |
| BHME-6M6B | 3/8 MNPT By 3/8 Hose Barb Elbow Forged B |
| BHME-6M8B | 3/8 MNPT By 1/2 Hose Barb Elbow Forged B |
| BHME-8M6B | 1/2 MNPT By 3/8 Hose Barb Elbow Forged |
| BHME-8M8B | 1/2 MNPT By 1/2 Hose Barb Elbow Forged |
| BHME-12M12B | 3/4 MNPT by 3/4 Barb Elbow |
| BHME-16M12B | 1 Inch MNPT by 3/4 Barb Elbow |



BHBE SERIES

The BHBE Series is a forged Brass multi-barbed 90° Elbow connector. Barb sizes range from 1/8 inch to 1/2 inch. The working temperature range is -40° F to 160° F. Maximum pressure rating is 150 psi. This fitting is designed to be used with a hose clamp.

| SKU | Description |
|----------|--|
| BHBE-4-2 | 1/4 inch by 1/8 inch Brass Multi-Barbed Reducing Elbow Connector |
| BHBE-4-4 | 1/4 inch by 1/4 inch Brass Multi-Barbed Elbow Connector |
| BHBE-5-5 | 5/16 inch by 5/16 inch Brass Multi-Barbed Elbow Connector |
| BHBE-6-2 | 3/8 inch by 1/8 inch Brass Multi-Barbed Reducing Elbow Connector |
| BHBE-6-4 | 3/8 inch by 1/4 inch Brass Multi-Barbed Reducing Elbow Connector |
| BHBE-6-6 | 3/8 inch by 3/8 inch Brass Multi-Barbed Elbow Connector |
| BHBE-8-4 | 1/2 inch by 1/4 inch Brass Multi-Barbed Reducing Elbow Connector |
| BHBE-8-6 | 1/2 inch by 3/8 inch Brass Multi-Barbed Reducing Elbow Connector |
| BHBE-8-8 | 1/2 inch by 1/2 inch Brass Multi-Barbed Elbow Connector |



BFT THREADED BRASS TEE

Brass Tee with female NPT threads. The operating pressure is 1200 psi and the temperature range is -65° F to 250° F. This tee is available as Forged or Barstock. Nickel Plate is also available in barstock.

| SKU | Description |
|--------|---------------------------|
| BFT-2 | 1/8 FNPT Brass Tee B F NP |
| BFT-4 | 1/4 FNPT Brass Tee B F NP |
| BFT-6 | 3/8 FNPT Brass Tee B F NP |
| BFT-8 | 1/2 FNPT Brass Tee B F NP |
| BFT-12 | 3/4 FNPT Brass Tee B F NP |
| BFT-16 | 1 inch FNPT Brass Tee F |



BFE 90° THREADED BRASS ELBOW

90° Brass Elbow with female NPT threads. It is available in equal and reducing sizes. It is also available in Forged and Barstock. (As noted below in size list.) Some sizes are also available in nickel plate.

| SKU | Description |
|---------|--|
| BFE-2 | 1/8 FNPT 90° Brass Elbow B F NP |
| BFE-4 | 1/4 FNPT 90° Brass Elbow B F NP |
| BFE-6 | 3/8 FNPT 90° Brass Elbow B F |
| BFE-8 | 1/2 FNPT 90° Brass Elbow B F |
| BFE-12 | 3/4 FNPT 90° Brass Elbow B F |
| BFE-1 | 1 inch FNPT 90° Brass Elbow F |
| BFE-4-2 | 1/4 FNPT by 1/8 FNPT 90° Brass Elbow Reducer F |
| BFE-6-4 | 3/8 FNPT by 1/4 FNPT 90° Brass Elbow Reducer F |
| BFE-8-6 | 1/2 FNPT by 3/8 FNPT 90° Brass Elbow Reducer F |



BFCC THREADED BRASS CROSS (BARSTOCK OR FORGED AVAILABLE)

Brass Cross has female NPT threads. The operating pressure is 1200 psi and the temperature range is -65° F to 250° F. The cross is available as Forged or Barstock. (Availabilities are noted below.)

| SKU | Description |
|---------|----------------------------|
| BFCC-2 | 1/8 FNPT Brass Cross BF |
| BFCC-4 | 1/4 FNPT Brass Cross BF |
| BFCC-6 | 3/8 FNPT Brass Cross BF |
| BFCC-8 | 1/2 FNPT Brass Cross BF |
| BFCC-12 | 3/4 FNPT Brass Cross B |



BBX SERIES

This series of Brass connectors is compiled of straight connectors, elbows, tees and crosses. The working temperature range is -40° F to 160° F. The straights, tees and crosses have equal barb sizes. The elbows are both equal and reducing. These fittings are designed for use with hose clamps.

| SKU | Description |
|-------|--|
| BBX-4 | 1/4 inch Brass Multi-Barbed Cross Connector |
| BBX-5 | 5/16 inch Brass Multi-Barbed Cross Connector |
| BBX-6 | 3/8 inch Brass Multi-Barbed Cross Connector |

INDEX

B

BBX Series 8
BFCC THREADED BRASS CROSS (BARSTOCK OR FORGED AVAILABLE) 7
BFE 90° THREADED BRASS ELBOW 7
BFT THREADED BRASS TEE 6
BHBE Series 6
BHME Series 5
BHT Series 4
BME Series 4
BSE45 Series 3
BSTE Series 2

M

MASV MINI FORGED TWO-WAY BALL VALVES 2
MBBV FULL PORT 2-WAY BRASS BALL VALVE 1
MBT Series 1