

FORGED BRASS

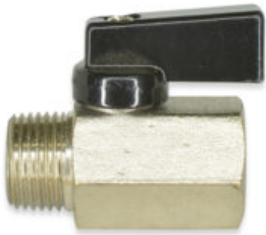
STF SERIES



The STF Series is a Forged Brass female-run Street Tee. These fittings can be used with iron, copper, or brass pipe. They can be used for water, chemicals, flammable gases, and fire sprinkler systems.

SKU	DESCRIPTION
STF-2F2MM	1/8 FNPT Inlet 1/8 MNPT Forged Tee
STF-4F4MM	1/4 FNPT Inlet 1/4 MNPT Forged Tee

RV5 SERIES



Forged Miniature Ball Valve

Chrome Plated Brass

This is a Chrome-plated Forged Brass Mini Ball Valve with a Chrome-plated Brass ball. The maximum working pressure is 450 psi, 142 psi at 356°F, and 355 psi at 212°F. Available in female by female and male by female. Available with a flag handle, a lever handle, or a tee handle, or can be adjusted with a screwdriver.

****This product is not lead-free.****

SKU	Definition
RV5-2F	1/8 FNPT Taper Ball Valve
RV5-4F	1/4 FNPT Taper Ball Valve

SKU	Definition
RV5-4M4F	1/4 MNPT Taper by FNPT Taper Ball Valve
RV5-6M6F	3/8 MNPT Taper by FNPT Taper Full Port Ball Valve
RV5-6F	3/8 FNPT Taper Ball Valve
RV5-8F	1/2 FNPT Taper Ball Valve
RV5-2F2M	1/8 FNPT Taper 1/8 MNPT Taper Ball Valve
RV5-4F4M	1/4 FNPT Taper 1/4 MNPT Taper Ball Valve
RV5-6F6M	3/8 FNPT Taper 3/8 MNPT Taper Ball Valve

MBT SERIES



The MBT Series is a Brass male branch tee. Available Male and Female NPT thread sizes are 1/8 inch, 1/4 inch, 3/8 inch, 1/2 inch, and 3/4 inch. It is available for forged, bar-stock and nickel-plated (noted below).

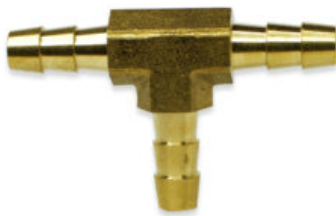
SKU	Description
MBT-2M2F	1/8 MNPT by 1/8 FNPT Male Branch Tee B F NP
MBT-4M4F	1/4 MNPT by 1/4 FNPT Male Branch Tee B F NP
MBT-6M6F	3/8 MNPT by 3/8 FNPT Male Branch Tee B NP
MBT-8M8F	1/2 MNPT by 1/2 FNPT Male Branch Tee B NP
MBT-12M12F	3/4 MNPT by 3/4 FNPT Male Branch Tee B



BME SERIES

The BME Series is a 90° Brass forged Elbow, available in both equal and reducing sizes. Available Male NPT thread sizes are 1/8 inch, 1/4 inch, 3/8 inch, and 1/2 inch. The temperature range is -65° F to 250° F. The operating pressure is 1200 psi. They can be used for grease, fuels, refrigeration, and hydraulic applications. They meet ASA, ASME, and SAE specifications. Nickel-plated brass is available.

SKU	Description
BME-2	1/8 MNPT Forged Brass Elbow NP
BME-4	1/4 MNPT Forged Brass Elbow NP
BME-6	3/8 MNPT Forged Brass Elbow NP
BME-8	1/2 MNPT Forged Brass Elbow NP
BME-8-4	1/2 MNPT by 1/4 MNPT Forged Elbow Reducer
BME-6-4	3/8 MNPT by 1/4 MNPT Forged Elbow Reducer
BME-8-6	3/8 MNPT by 1/4 MNPT Forged Elbow Reducer



BHT SERIES

The BHT Series is a forged Brass multi-barbed Tee connector. Available barb sizes are 1/8 inch, 1/4 inch, and 3/4 inch. The working temperature range is -40° F to 160° F. Maximum working pressure is 150 psi. This fitting is designed for use with a hose clamp.

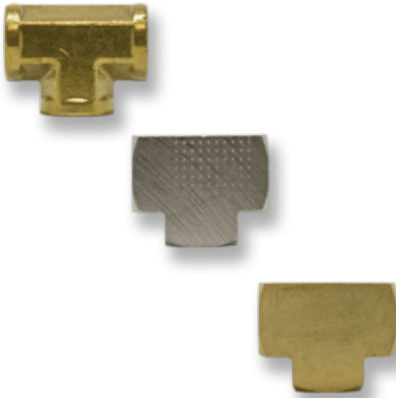
SKU	Description
BHT-2	1/8 inch Brass Multi-Barbed Tee Connector
BHT-4	1/4 inch Brass Multi-Barbed Tee Connector
BHT-34	3/4 inch Brass Multi-Barbed Tee Connector

BHBE SERIES



The BHBE Series is a forged Brass multi-barbed 90° Elbow connector. Barb sizes range from 1/8 inch to 1/2 inch. The working temperature range is -40° F to 160° F. Maximum pressure rating is 150 psi. This fitting is designed to be used with a hose clamp.

SKU	Description
BHBE-4-2	1/4 inch by 1/8 inch Brass Multi-Barbed Reducing Elbow Connector
BHBE-4-4	1/4 inch by 1/4 inch Brass Multi-Barbed Elbow Connector
BHBE-5-5	5/16 inch by 5/16 inch Brass Multi-Barbed Elbow Connector
BHBE-6-2	3/8 inch by 1/8 inch Brass Multi-Barbed Reducing Elbow Connector
BHBE-6-4	3/8 inch by 1/4 inch Brass Multi-Barbed Reducing Elbow Connector
BHBE-6-6	3/8 inch by 3/8 inch Brass Multi-Barbed Elbow Connector
BHBE-8-4	1/2 inch by 1/4 inch Brass Multi-Barbed Reducing Elbow Connector
BHBE-8-6	1/2 inch by 3/8 inch Brass Multi-Barbed Reducing Elbow Connector
BHBE-8-8	1/2 inch by 1/2 inch Brass Multi-Barbed Elbow Connector



BFT SERIES

Threaded Brass Tee

The BFT Series is a Brass Tee with female NPT threads. The operating pressure is 1200 psi and the temperature range is -65° F to 250° F. This tee is available as Forged or Barstock. Nickel Plate is also available in barstock.

SKU	Description
BFT-2	1/8 FNPT Brass Tee B F NP
BFT-4	1/4 FNPT Brass Tee B F NP
BFT-6	3/8 FNPT Brass Tee B F NP
BFT-8	1/2 FNPT Brass Tee B F NP
BFT-12	3/4 FNPT Brass Tee B F NP
BFT-16	1 inch FNPT Brass Tee F

BFE SERIES



90° Brass Elbow with female NPT threads. It is available in equal and reduced sizes. It is also available in Forged and Barstock. (As noted below in size list.) Some sizes are also available in nickel plates.

SKU	Description
BFE-2	1/8 FNPT 90° Brass Elbow B F NP
BFE-4	1/4 FNPT 90° Brass Elbow B F NP
BFE-6	3/8 FNPT 90° Brass Elbow B F
BFE-8	1/2 FNPT 90° Brass Elbow B F
BFE-12	3/4 FNPT 90° Brass Elbow B F
BFE-1	1 inch FNPT 90° Brass Elbow F
BFE-4-2	1/4 FNPT by 1/8 FNPT 90° Brass Elbow Reducer F
BFE-6-4	3/8 FNPT by 1/4 FNPT 90° Brass Elbow Reducer F
BFE-8-6	1/2 FNPT by 3/8 FNPT 90° Brass Elbow Reducer F

BFCC SERIES



Threaded Brass Cross (Barstock or Forged Available)

Brass Cross has female NPT threads. The operating pressure is 1200 psi and the temperature range is -65° F to 250° F. The cross is available as Forged or Barstock. (Availabilities are noted below.)

SKU	Description
BFCC-2	1/8 FNPT Brass Cross BF
BFCC-4	1/4 FNPT Brass Cross BF
BFCC-6	3/8 FNPT Brass Cross BF
BFCC-8	1/2 FNPT Brass Cross BF
BFCC-12	3/4 FNPT Brass Cross B

BBX SERIES



This series of Brass connectors is composed of straight connectors, elbows, tees, and crosses. The working temperature range is -40° F to 160° F. The straights, tees, and crosses have equal barb sizes. The elbows are both equal and reducing. These fittings are designed for use with hose clamps.

SKU	Description
BBX-4	1/4 inch Brass Multi-Barbed Cross Connector
BBX-5	5/16 inch Brass Multi-Barbed Cross Connector
BBX-6	3/8 inch Brass Multi-Barbed Cross Connector

INDEX

B

BBX Series 6
BFCC Series 5
BFE Series 5
BFT Series 4
BHBE Series 4
BHT Series 3
BME Series 3

M

MBT Series 2

R

RV5 Series 1

S

STF Series 1