

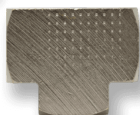
**BARSTOCK**

## HCSS SERIES



HCSS Series is a Bar stock Hex Socket Plug made of 304 or 316 Stainless Steel. It can be used with air, water, oil, natural gas or steam. Also, the maximum pressure is 300 psi at 72° F or 150 psi at 366 ° F for steam.

SKU	DESCRIPTION
HCSS-1M	1/16 MNPT Socket Plug
HCSS-2M	1/8 MNPT Socket Plug
HCSS-4M	1/4 MNPT Socket Plug
HCSS-6M	3/8 MNPT Socket Plug
HCSS-8M	1/2 MNPT Socket Plug



## BFT SERIES

The BFT Series is a Brass Tee with female NPT threads. The operating pressure is 1200 psi and the temperature range is -65° F to 250° F. This tee is available as Forged or Barstock. Nickel Plate is also available in barstock.

SKU	Description
BFT-2	1/8 FNPT Brass Tee B F NP
BFT-4	1/4 FNPT Brass Tee B F NP
BFT-6	3/8 FNPT Brass Tee B F NP
BFT-8	1/2 FNPT Brass Tee B F NP
BFT-12	3/4 FNPT Brass Tee B F NP
BFT-16	1 inch FNPT Brass Tee F



## BSE45 SERIES

The BSE45 Series are 45° Brass Elbows available as both forged and barstock. The temperature range is -65° F to 250° F. The operating pressure is 1200 psi. They can be used for grease, fuels, refrigeration, and hydraulic applications. They meet ASA, ASME, and SAE specifications.

SKU	Description
BSE45-2M2F	1/8 MNPT by 1/8 FNPT Brass 45° Elbow B F
BSE45-4M4F	1/4 MNPT by 1/4 FNPT Brass 45° Elbow B F
BSE45-6M6F	3/8 MNPT by 3/8 FNPT Brass 45° Elbow B F
BSE45-8M8F	1/2 MNPT by 1/2 FNPT Brass 45° Elbow B
BSE45-12M12F	3/4 MNPT by 3/4 FNPT Brass 45° Elbow B

SKU	Description
BSE45-2M2F	1/8 MNPT by 1/8 FNPT Brass 45° Elbow B F
BSE45-4M4F	1/4 MNPT by 1/4 FNPT Brass 45° Elbow B F
BSE45-6M6F	3/8 MNPT by 3/8 FNPT Brass 45° Elbow B F
BSE45-8M8F	1/2 MNPT by 1/2 FNPT Brass 45° Elbow B
BSE45-12M12F	3/4 MNPT by 3/4 FNPT Brass 45° Elbow B

## MBT SERIES



The MBT Series is a Brass male branch tee. Available Male and Female NPT thread sizes are 1/8 inch, 1/4 inch, 3/8 inch, 1/2 inch, and 3/4 inch. It is available for forged, bar-stock and nickel-plated (noted below).

SKU	Description
MBT-2M2F	1/8 MNPT by 1/8 FNPT Male Branch Tee B F NP
MBT-4M4F	1/4 MNPT by 1/4 FNPT Male Branch Tee B F NP
MBT-6M6F	3/8 MNPT by 3/8 FNPT Male Branch Tee B NP
MBT-8M8F	1/2 MNPT by 1/2 FNPT Male Branch Tee B NP
MBT-12M12F	3/4 MNPT by 3/4 FNPT Male Branch Tee B



## BFE SERIES

90° Brass Elbow with female NPT threads. It is available in equal and reduced sizes. It is also available in Forged and Barstock. (As noted below in size list.)

Some sizes are also available in nickel plates.

SKU	Description
BFE-2	1/8 FNPT 90° Brass Elbow B F NP
BFE-4	1/4 FNPT 90° Brass Elbow B F NP
BFE-6	3/8 FNPT 90° Brass Elbow B F
BFE-8	1/2 FNPT 90° Brass Elbow B F
BFE-12	3/4 FNPT 90° Brass Elbow B F
BFE-1	1 inch FNPT 90° Brass Elbow F
BFE-4-2	1/4 FNPT by 1/8 FNPT 90° Brass Elbow Reducer F
BFE-6-4	3/8 FNPT by 1/4 FNPT 90° Brass Elbow Reducer F
BFE-8-6	1/2 FNPT by 3/8 FNPT 90° Brass Elbow Reducer F



## BFCC SERIES

Brass Cross has female NPT threads. The operating pressure is 1200 psi and the temperature range is -65° F to 250° F. The cross is available as Forged or Barstock. (Availabilities are noted below.)

SKU	Description
BFCC-2	1/8 FNPT Brass Cross BF
BFCC-4	1/4 FNPT Brass Cross BF
BFCC-6	3/8 FNPT Brass Cross BF
BFCC-8	1/2 FNPT Brass Cross BF
BFCC-12	3/4 FNPT Brass Cross B



## BHFA SERIES

The BHFA Series is a Brass multi-barbed rigid female barstock adapter. It has Female NPT threads on the opposite side of the barbed end. Available FNPT thread sizes are 1/8 inch, 1/4 inch, 3/8 inch, 1/2 inch, and 3/4 inch. Available barb sizes range from 1/8 inch to 1 inch. Flow can be equal or reduced. The temperature range is -40° F to 160° F and the working pressure is 150 psi.

SKU	Description
BHFA-2F2B	1/8 inch FNPT by 1/8 inch Brass Multi-Barbed Adapter
BHFA-2F3B	1/8 inch FNPT by 3/16 inch Brass Multi-Barbed Adapter
BHFA-2F4B	1/8 inch FNPT by 1/4 inch Brass Multi-Barbed Adapter
BHFA-2F5B	1/8 inch FNPT by 5/16 inch Brass Multi-Barbed Adapter
BHFA-2F6B	1/8 inch FNPT by 3/8 inch Brass Multi-Barbed Adapter
BHFA-4F2B	1/4 inch FNPT by 1/8 inch Brass Multi-Barbed Adapter
BHFA-4F3B	1/4 inch FNPT by 3/16 inch Brass Multi-Barbed Adapter
BHFA-4F4B	1/4 inch FNPT by 1/4 inch Brass Multi-Barbed Adapter
BHFA-4F5B	1/4 inch FNPT by 5/16 inch Brass Multi-Barbed Adapter
BHFA-4F6B	1/4 inch FNPT by 3/8 inch Brass Multi-Barbed Adapter
BHFA-4F8B	1/4 inch FNPT by 1/2 inch Brass Multi-Barbed Adapter

SKU	Description
BHFA-6F4B	3/8 inch FNPT by 1/4 inch Brass Multi-Barbed Adapter
BHFA-6F5B	3/8 inch FNPT by 5/16 inch Brass Multi-Barbed Adapter
BHFA-6F6B	3/8 inch FNPT by 3/8 inch Brass Multi-Barbed Adapter
BHFA-6F8B	3/8 inch FNPT by 1/2 inch Brass Multi-Barbed Adapter
BHFA-8F6B	1/2 inch FNPT by 3/8 inch Brass Multi-Barbed Adapter
BHFA-8F8B	1/2 inch FNPT by 1/2 inch Brass Multi-Barbed Adapter



## BHM SERIES

The BHM Series is a barstock Brass multi-barbed straight connector. Barb sizes range from 1/8 inch to 1 inch. The working temperature range is -40° F to 160° F. Maximum pressure rating is 150 psi. This fitting is designed to be used with a hose clamp.

SKU	Description
BHM-2	1/8 inch by 1/8 inch Brass Multi-Barbed Straight Connector
BHM-3	3/16 inch by 3/16 inch Brass Multi-Barbed Straight Connector
BHM-4	1/4 inch by 1/4 inch Brass Multi-Barbed Straight Connector
BHM-5	5/16 inch by 5/16 inch Brass Multi-Barbed Straight Connector
BHM-6	3/8 inch by 3/8 inch Brass Multi-Barbed Straight Connector
BHM-8	1/2 inch by 1/2 inch Brass Multi-Barbed Straight Connector
BHM-10	5/8 inch by 5/8 inch Brass Multi-Barbed Straight Connector
BHM-12	3/4 inch by 3/4 inch Brass Multi-Barbed Straight Connector



## BHMA SERIES

The BHMA Series is a rigid multi-barbed Brass Barstock Adapter. It adapts from male NPT threads to barbs. Available MNPT sizes range from 1/16 inch to 1 inch. Available barb sizes range from 1/8 inch to 3/4 inch. Flow can be equal or reduced. The temperature range is -40° F to 160° F and the working pressure is 150 psi.

SKU	Description
BHMA-1M2B	1/16 inch MNPT by 1/8 inch Brass Multi-Barbed Brass Straight Adapter
BHMA-1M4B	1/16 inch MNPT by 1/4 inch Brass Multi-Barbed Brass Straight Adapter
BHMA-2M2B	1/8 inch MNPT by 1/8 inch Brass Multi-Barbed Brass Straight Adapter
BHMA-2M2B-SH	1/8 inch MNPT by 1/8 inch Brass Multi-Barbed Brass Straight Adapter Short .475
BHMA-2M3B	1/8 inch MNPT by 3/16 inch Brass Multi-Barbed Brass Straight Adapter
BHMA-2M4B	1/8 inch MNPT by 1/4 inch Brass Multi-Barbed Brass Straight Adapter
BHMA-2M5B	1/8 inch MNPT by 5/16 inch Brass Multi-Barbed Brass Straight Adapter
BHMA-2M6B	1/8 inch MNPT by 3/8 inch Brass Multi-Barbed Brass Straight Adapter
BHMA-2M8B	1/8 inch MNPT by 1/2 inch Brass Multi-Barbed Brass Straight Adapter
BHMA-4M2B	1/4 inch MNPT by 1/8 inch Brass Multi-Barbed Brass Straight Adapter
BHMA-4M4B	1/4 inch MNPT by 1/4 inch Brass Multi-Barbed Brass Straight Adapter
BHMA-4M6B	1/4 inch MNPT by 3/8 inch Brass Multi-Barbed Brass Straight Adapter
BHMA-4M8B	1/4 inch MNPT by 1/2 inch Brass Multi-Barbed Brass Straight Adapter
BHMA-6M4B	3/8 inch MNPT by 1/4 inch Brass Multi-Barbed Brass Straight Adapter
BHMA-6M6B	3/8 inch MNPT by 3/8 inch Brass Multi-Barbed Brass Straight Adapter
BHMA-6M8B	3/8 inch MNPT by 1/2 inch Brass Multi-Barbed Brass Straight Adapter
BHMA-8M8B	1/2 inch MNPT by 1/2 inch Brass Multi-Barbed Brass Straight Adapter
BHMA-12M12B	3/4 inch MNPT by 3/4 inch Brass Multi-Barbed Brass Straight Adapter

SKU	Description
BHMA-12M8B	3/4 inch MNPT by 1/2 inch Brass Multi-Barbed Brass Straight Adapter

## BHME SERIES

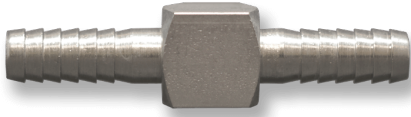


The BHME Series is a forged Brass multi-barbed 90° Elbow Adapter with male NPT threads. Available MNPT thread sizes range from 1/8 inch to 1 inch. In addition, available barb sizes range from 3/16 inches to 3/4 inches. Flow can be equal or reduced. The working temperature range is -40° to 160° and the working pressure is 150 psi. Barstock is optional for some sizes (see list below).

SKU	Description
BHME-2M3B	1/8 MNPT by 3/16 Hose Barb Elbow Forged
BHME-2M4B	1/8 MNPT By 1/4 Hose Barb Elbow Forged B
BHME-2M5B	1/8 MNPT By 5/16 Hose Barb Elbow Forged
BHME-2M6B	1/8 MNPT By 3/8 Barb Elbow Forged
BHME-38M18B-R2	3/8 MNPT By 1/8 Hose Barb Elbow Forged 2 Piece Unit
BHME-4M3B	1/4 MNPT by 3/16 Hose Barb Elbow Forged
BHME-4M4B	1/4 MNPT By 1/4 Hose Barb Elbow Forged B
BHME-4M5B	1/4 MNPT by 5/16 Hose Barb Elbow Forged
BHME-4M6B	1/4 MNPT by 3/8 Hose Barb Elbow Forged B
BHME-4M8B	1/4 MNPT By 1/2 Hose Barb Elbow Forged
BHME-6M4B-B	3/8 MNPT By 1/4 Hose Barb Elbow Barstock
BHME-6M5B	3/8 MNPT By 5/16 Hose Barb Elbow Forged
BHME-6M6B	3/8 MNPT By 3/8 Hose Barb Elbow Forged B
BHME-6M8B	3/8 MNPT By 1/2 Hose Barb Elbow Forged B
BHME-8M6B	1/2 MNPT By 3/8 Hose Barb Elbow Forged
BHME-8M8B	1/2 MNPT By 1/2 Hose Barb Elbow Forged
BHME-12M12B	3/4 MNPT by 3/4 Barb Elbow
BHME-16M12B	1 Inch MNPT by 3/4 Barb Elbow



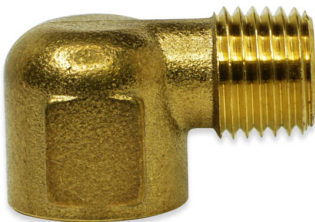
## BHFT SERIES



The BHFT Series is a multi-barbed Brass Tee Adapter with female NPT threads to barbs. FNPT thread sizes are: 1/8 inch, 1/4 inch, and 3/8 inch. Barb sizes are 1/4 inch, 5/16 inch, and 3/8 inch. This series is in Barstock only. Available in Nickel Plate.

SKU	Description
BHFT-2F4B	1/8 inch FNPT by 1/4 inch Brass Multi-Barbed Tee Adapter
BHFT-2F5B	1/8 inch FNPT by 5/16 inch Brass Multi-Barbed Tee Adapter
BHFT-2F6B	1/8 inch FNPT by 3/8 inch Brass Multi-Barbed Tee Adapter
BHFT-4F4B	1/4 inch FNPT by 1/4 inch Brass Multi-Barbed Tee Adapter
BHFT-4F6B	1/4 inch FNPT by 3/8 inch Brass Multi-Barbed Tee Adapter
BHFT-6F6B	3/8 inch FNPT by 3/8 inch Brass Multi-Barbed Tee Adapter

## BSTE SERIES



The BSTE Series are 90° Brass Street Elbows, available as both forged and bar stock. The bar stock fitting is available in a short version. The forged is available as a reducer. Available MNPT and FNPT thread sizes are 1/8 inch, 1/4 inch, 3/8 inch, 1/2 inch, and 3/4 inch. The temperature range is -65° F to 250° F. The operating pressure is 1200 psi. They can be used for grease, fuels, refrigeration, and hydraulic applications. They meet ASA, ASME, and SAE specifications.

SKU	Description
BSTE-2-S-NP	1/8 inch NPT Nickel Plated Short Street Elbow
BSTE-2	1/8 inch MNPT by 1/8 inch FNPT Brass Street Elbow
BSTE-4	1/4 inch MNPT by 1/4 inch FNPT Brass Street Elbow
BSTE-6	3/8 inch MNPT by 3/8 inch FNPT Brass Street Elbow
BSTE-8	1/2 inch MNPT by 1/2 inch FNPT Brass Street Elbow
BSTE-12	3/4 inch MNPT by 3/4 inch FNPT Brass Street Elbow
BSTE-2M4F	1/8 inch MNPT by 1/4 inch FNPT Brass Street Elbow
BSTE-4M6F	1/4 inch MNPT by 3/8 inch FNPT Brass Street Elbow
BSTE-4M2F	1/4 inch MNPT by 1/8 inch FNPT Brass Street Elbow Reducer