

Barbed



BARBED

This product features a barb that enables quick and secure connections to your tubing or other components.



GHT SERIES

GHT Series is a versatile Male Garden Hose designed with two barbed fittings, available in durable Nylon or black Polypropylene materials. This series offers a range of sizes, including 3/8-inch, 1/2-inch, 5/8 inch, and 3/4-inch barbs. Ensuring compatibility with various garden hose applications. The robust construction of Nylon and Polypropylene provides excellent resistance to wear and tear, making these fittings ideal for both residential and commercial use.



20AC PB2 SERIES

Acetal Quick Coupler. 1/8 Flow inline Barbed Male Plug in Valved or Non-Valved. The picture shown is a valved unit.

| NON-VALVED | VALVED | TUBE SIZE | METRIC TUBE | L(nv/v) | WIDTH | HEIGHT |
|-------------|--------------|--------------|----------------|------------|-------|--------|
| 20AC-PB2-01 | 20ACV-PB2-01 | 1/16" ID | 1.6 MM ID | .80"/1.48" | .55" | .55" |
| 20AC-PB2-02 | 20ACV-PB2-02 | 1/8" ID | 3.2 MM ID | .97"/1.65" | .55" | .55" |
| 20AC-PB2-03 | 20ACV-PB2-03 | 3/16" ID | 4.8 MM ID | 1.12"/.80" | .55" | .55" |
| 20AC-PB2-04 | 20ACV-PB2-04 | 1/4" ID | 6.4 MM ID | 1.12"/.80" | .55" | .55" |



CBIH SERIES

Pneuline offers food-grade chrome-plated quick connect plugs for a wide array of industrial applications as well as food industry applications. These quick connects operate at 250psi and are rated for temperatures up to 180 °F.

| NON-VALVED | VAIVED | TUBE SIZE | METRIC TUBE | L(nv/v) | WIDTH | HEIGHT |
|-------------|--------------|--------------|----------------|-------------|-------|--------|
| 20CB-PB2-02 | 20CBV-PB2-02 | 1/8" ID | 3.2 MM ID | .98"/1.65" | .63" | .63" |
| 20CB-PB2-03 | 20CBV-PB2-03 | 3/16" ID | 4.8 MM ID | 1.13"/1.80" | .63" | .63" |
| 20CB-PB2-04 | 20CBV-PB2-04 | 1/4" ID | 6.4 MM ID | 1.13"/1.85" | .63" | .63" |
| 40CB-PB2-04 | 40CBV-PB2-04 | 1/4" ID | 6.4 MM ID | 1.30"/1.85" | .63" | .63" |
| 40CB-PB2-05 | 40CBV-PB2-05 | 5/16" ID | 7.9 MM ID | 1.30"/1.85" | .63" | .63" |
| 40CB-PB2-06 | 40CBV-PB2-06 | 3/8" ID | 9.5 MM ID | 1.30"/1.85" | .63" | .63" |

MPV SERIES | AUTOMOTIVE GRADE CHECK VALVES



Pneuline Supply manufactures Plastic Check Valves that are ideal for Automotive applications. Inlets are made of either Natural Nylon or Glass-Filled Natural Nylon. Outlets are made of either Black Nylon or Glass-Filled Black Nylon. The Barbed connectors are available in 1/8-inch, 3/16 inch, and 1/4-inch Standard Flow or 1/4-inch, 5/16 inch, and 3/8 inch High Flow. Diaphragms are made of either Fluorosilicone or EPDM. Customer-specific unique laser part marking is available for identifiers such as Part number sequencing, Lot number, or Company name.

[Download Our Flyer](#)

| SKU | Description | Flow l/h | Crack Pressure |
|-----------|---|----------|----------------|
| MPV-2B-NE | 1/8 Barb Nylon / EPDM Check Valve | 50.79 | .007 |
| MPV-2B-NF | 1/8 Barb Nylon / Fluorosilicone Check Valve | 62.79 | .007 |
| MPV-3B-NE | 3/16 Barb Nylon / EPDM Check Valve | 50.79 | .007 |

| SKU | Description | Flow l/h | Crack Pressure |
|----------------------|---|--------------|----------------|
| MPV-3B-NF | 3/16 Barb Nylon / Fluorosilicone Check Valve | 62.79 | .007 |
| MPV-3B-PE | 3/16 Barb Polypropylene / EPDM Check Valve | 50.79 | .007 |
| MPV-4B-HKE | 1/4 Barb Hi-Flow PVDF / EPDM Check Valve | 26.28 | .001 |
| MPV-4B-NE | 1/4 Barb Hi-Flow Nylon / EPDM Check Valve | 50.79 | .007 |
| MPV-4B-NF | 1/4 Barb Nylon / Fluorosilicone Check Valve | 62.79 | .007 |
| MPV-5B-NE | 5/16 Barb Hi-Flow Nylon / EPDM Check Valve | 26.28 | .001 |
| MPV-5B-NF | 5/16 Barb H-Flow Nylon / Fluorosilicone Check Valve | 20.57 | .001 |
| MPV-5B-R530-E | 5/16 Barb High-Flow Glass-Filled Nylon / EPDM Check Valve | 26.28 | .001 |
| MPV-6B-NE | 3/8 Barb High-Flow Nylon / EPDM Check Valve | 26.28 | .001 |
| MPV-6B-NF | 3/8 Barb Hi-Flow Nylon / Fluorosilicone Check Valve | 20.57 | .001 |
| MPV-6B-R530-E | 3/8 Barb High-Flow Glass-Filled Nylon / EPDM Check Valve | 26.28 | .001 |



4F4B SERIES | PLASTIC CONNECTOR

4F4B Series is a FNPT to 1/4" Barbed Plastic Connector is available in either Kynar or HDPE.

LS-T & LS-TR SERIES



LS-T & LS-TR Series is a 316 Stainless Steel Tee connector with equal and reducing barbs.

| SKU | DESCRIPTION |
|-------------|--|
| LS-T-532B | 5/32 Barb Tee 316 Stainless Steel |
| LS-T-3B | 3/16 Barb Tee 316 Stainless Steel |
| LS-T-4B | 1/4 Barb Tee 316 Stainless Steel |
| LS-T-5B | 5/16 Barb Tee 316 Stainless Steel |
| LS-T-6B | 3/8 Barb Tee 316 Stainless Steel |
| LS-T-8B | 1/2 Barb Tee 316 Stainless Steel |
| LS-T-10B | 5/8 Barb Tee 316 Stainless Steel |
| LS-T-12B | 3/4 Barb Tee 316 Stainless Steel |
| LS-TR-6B5B | 3/8 Barb by 5/16 Barb Reducing Tee 316 Stainless Steel |
| LS-TR-8B5B | 1/2 Barb by 5/16 Barb Reducing Tee 316 Stainless Steel |
| LS-TR-10B5B | 5/8 Barb by 5/16 Barb Reducing Tee 316 Stainless Steel |

MLLR-MG SERIES



The MLLR-MG Series are rotating male luer to barb. It is available in clear ABS and radiation stable Polycarbonate. In addition, barb sizes are 1/32", 1/16", 3/32", 1/8", 5/32", 3/16" and 1/4". Separate locking rings are available in several colors of Nylon.

MSLE SERIES



Male slip luer by barb Elbow. The barb accommodates 3/32" ID tubing. This luer may be used with a separate rotating lock ring. It is available in white and black Nylon, black Polypropylene, and clear Polycarbonate.

| SKU | DESCRIPTION |
|------|------------------------------|
| MSLE | Male Slip Luer Elbow by Barb |

ME45 SERIES



The ME45 Series is a male thread-to-bite-style barb Brass 45° Elbow Adapter. *Order Example: ME45-2M532B*

MA SERIES - BITE-STYLE ADAPTER



Male NPT thread to Bite-Style barb Adapters in Brass and 303 Stainless. **The MA series are straight adapters** and **The ME series** are elbows.

BE & BER SERIES



The BE & BER Series is a 90° equal and reducing Brass Elbow connector with Bite-Style barbs. They are also available in 303 Stainless Steel.

MEU SERIES



The MEU Series is a thread to Bite-Style Barb Brass male Elbow Adapter. Also available in 303 Stainless Steel.

MAUM SERIES



UNF Threads to Bite-Style Barbs in Brass Available in 3-56 6-32 8-32 10-32 1/4-20 1/4-28 5/16-24 Metric sizes of: M3X.5 M5X.8 M6X1 M10X1 M8X1.25 Barb Sizes .045(364B) .062(1B) .078(78B) 3/32(332B) 1/8(2B) 5/32(532B) .170(170B) 3/16(3B) 7/32(732B) 1/4(4B) 5/16(5B) Furnished with fiber gasket. Also available with an O-ring (O) or captive gasket (CG). The standard O-ring is Buna. All units can be nickel-plated. 303 stainless is available. Orifices are available in all fitting combinations Order Example: MAU-12X1B

DTP SERIES



The DTP Series is a brass barbed tube plug. This fitting has excellent vibration resistance and requires no clamp. The maximum working pressure is 150 psi and the temperature range is -65° F to 90° F. This fitting can be used in humidifiers, pneumatic systems, and filters.

| SKU | DESCRIPTION |
|-----------|-----------------------------|
| DTP-33214 | Tube Plug 3/32 ID by 1/4 ID |
| DTP-375 | Tube Plug .375 ID |
| DTP-250 | Tube Plug .250 ID |
| DTP-170 | Tube Plug .170 ID |

SSWS SERIES



The SSWS Series is a Brass Swivel Adapter. It is available with male NPT threads to female NPT threads or a barb connection. The working pressure for both the threaded and barbed swivels is 300 psi. Both swivels have a bronze thrust bearing and EPDM or FKM seals. This swivel provides a full 360° rotation. The barbs are intended to be used with a hose clamp.

| SKU | DESCRIPTION |
|-----------|-----------------------------------|
| SSWS-4M4B | 1/4 MNPT by 1/4 Barb Brass Swivel |
| SSWS-6M6B | 3/8 MNPT by 3/8 Barb Brass Swivel |
| SSWS-8F8M | 1/8 FNPT by 1/8 MNPT Brass Swivel |
| SSWS-4F4M | 1/4 FNPT by 1/4 MNPT Brass Swivel |
| SSWS-6F6M | 3/8 FNPT by 3/8 MNPT Brass Swivel |

SBHE SERIES



The SBHE Series is 316 Stainless male NPT threads to barb 90° Elbow Adapter. Available MNPT thread sizes are 1/8 inch, 1/4 inch, 3/8 inch, and 1/2 inch. Available barb sizes are 1/4 inch, 3/8 inch, and 1/2 inch.

SKU

Description

| | |
|-----------|--|
| SBHE-2M4B | 1/8 inch MNPT by 1/4 inch 316 Stainless Steel Barbed 90° Elbow |
| SBHE-4M4B | 1/4 inch MNPT by 1/4 inch 316 Stainless Steel Barbed 90° Elbow |
| SBHE-4M6B | 1/4 inch MNPT by 3/8 inch 316 Stainless Steel Barbed 90° Elbow |
| SBHE-6M6B | 3/8 inch MNPT by 3/8 inch 316 Stainless Steel Barbed 90° Elbow |
| SBHE-8M8B | 1/2 inch MNPT by 1/2 inch 316 Stainless Steel Barbed 90° Elbow |

SKHB SERIES



The SKHB Series is a cast 316 Stainless Steel adapter from male NPT threads to barb. The available MNPT thread sizes and barb sizes are: 1/4 inch, 3/8 inch, 1/2 inch, 3/4 inch, 1 inch, 1-1/4 inch, 1-1/2 inch, 2 inch, 2-1/2 inch, 3 inch, and 4 inch.

SKU

Description

| | |
|-------------|---|
| SKHB-4M4B | 1/4 MNPT by 1/4 Barb Cast 316 Stainless Steel Adapter |
| SKHB-6M6B | 3/8 MNPT by 3/8 Barb Cast 316 Stainless Steel Adapter |
| SKHB-8M8B | 1/2 MNPT by 1/2 Barb Cast 316 Stainless Steel Adapter |
| SKHB-12M12B | 3/4 MNPT by 3/4 Barb Cast 316 Stainless Steel Adapter |
| SKHB-16M16B | 1 inch MNPT by 1 Inch Barb Cast 316 Stainless Steel Adapter |
| SKHB-20M20B | 1-1/4 inch MNPT by 1-1/4 Inch Barb Cast 316 Stainless Steel Adapter |
| SKHB-24M24B | 1-1/2 inch MNPT by 1-1/2 Inch Barb Cast 316 Stainless Steel Adapter |
| SKHB-32M32B | 2 inch MNPT by 2 Inch Barb Cast 316 Stainless Steel Adapter |
| SKHB-40M40B | 2-1/2 inch MNPT by 2-1/2 Inch Barb Cast 316 Stainless Steel Adapter |
| SKHB-48M48B | 3 inch MNPT by 3 Inch Barb Cast 316 Stainless Steel Adapter |



SCHB SERIES

The SCHB Series is a cast 304 Stainless Steel Male NPT threads by barb adapter. Also available are barb to MNPT thread reducers. The available MNPT thread sizes are 1/4 inch, 3/8 inch, 1/2 inch, 1/8 inch, and 3/8 inch. The available barb sizes are 1/4 inch, 3/8 inch, 1/2 inch, and 3/4 inch.

| SKU | Description |
|------------|---|
| SCHB-4M4B | 1/4 inch MNPT by 1/4 inch Cast 304 Stainless Steel Barbed Adapter |
| SCHB-6M6B | 3/8 inch MNPT by 3/8 inch Cast 304 Stainless Steel Barbed Adapter |
| SCHB-8M8B | 1/2 inch MNPT by 1/2 inch Cast 304 Stainless Steel Barbed Adapter |
| SCHB-2M4B | 1/8 inch MNPT by 1/4 inch Cast 304 Stainless Steel Barbed Adapter |
| SCHB-4B6B | 1/4 inch MNPT by 3/8 inch Cast 304 Stainless Steel Barbed Adapter |
| SCHB-6M8B | 3/8 inch MNPT by 1/2 inch Cast 304 Stainless Steel Barbed Adapter |
| SCHB-8M12B | 1/2 inch MNPT by 3/4 inch Cast 304 Stainless Steel Barbed Adapter |



BCE SERIES

The BCE Series is a Sweep Elbow with bite-style barbs to hold the tubing securely and prevent slipping or pulling off. It is an excellent fitting to use with Polyurethane or Polyethylene tubing. It is made in Brass, Nickel-Plated Brass, or 303 Stainless.

| SKU | Description |
|----------|---|
| BCE-170B | .170 inch Bite-Style Barb Brass Sweep Elbow |
| BCE-1B | 1/16 inch Bite-Style Barb Brass Sweep Elbow |
| BCE-2B | 1/8 inch Bite-Style Barb Brass Sweep Elbow |
| BCE-332B | 3/32 inch Bite-Style Barb Brass Sweep Elbow |
| BCE-4B | 1/4 inch Bite-Style Barb Brass Sweep Elbow |
| BCE-6B | 3/8 inch Bite-Style Barb Brass Sweep Elbow |



BHBE SERIES

The BHBE Series is a forged Brass multi-barbed 90° Elbow connector. Barb sizes range from 1/8 inch to 1/2 inch. The working temperature range is -40° F to 160° F. Maximum pressure rating is 150 psi. This fitting is designed to be used with a hose clamp.

SKU

Description

BHBE-4-2 1/4 inch by 1/8 inch Brass Multi-Barbed Reducing Elbow Connector

BHBE-4-4 1/4 inch by 1/4 inch Brass Multi-Barbed Elbow Connector

BHBE-5-5 5/16 inch by 5/16 inch Brass Multi-Barbed Elbow Connector

BHBE-6-2 3/8 inch by 1/8 inch Brass Multi-Barbed Reducing Elbow Connector

BHBE-6-4 3/8 inch by 1/4 inch Brass Multi-Barbed Reducing Elbow Connector

BHBE-6-6 3/8 inch by 3/8 inch Brass Multi-Barbed Elbow Connector

BHBE-8-4 1/2 inch by 1/4 inch Brass Multi-Barbed Reducing Elbow Connector

BHBE-8-6 1/2 inch by 3/8 inch Brass Multi-Barbed Reducing Elbow Connector

BHBE-8-8 1/2 inch by 1/2 inch Brass Multi-Barbed Elbow Connector

BHT SERIES



The BHT Series is a forged Brass multi-barbed Tee connector. Available barb sizes are 1/8 inch, 1/4 inch, and 3/4 inch. The working temperature range is -40° F to 160° F. Maximum working pressure is 150 psi. This fitting is designed for use with a hose clamp.

SKU

Description

BHT-2 1/8 inch Brass Multi-Barbed Tee Connector

BHT-4 1/4 inch Brass Multi-Barbed Tee Connector

BHT-34 3/4 inch Brass Multi-Barbed Tee Connector

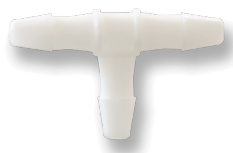
BHME SERIES



The BHME Series is a forged Brass multi-barbed 90° Elbow Adapter with male NPT threads. Available MNPT thread sizes range from 1/8 inch to 1 inch. In addition, available barb sizes range from 3/16 inches to 3/4 inches. Flow can be equal or reduced. The working temperature range is -40° to 160° and the working pressure is 150 psi. Barstock is optional for some sizes (see list below).

| SKU | Description |
|----------------|---|
| BHME-2M3B | 1/8 MNPT by 3/16 Hose Barb Elbow Forged |
| BHME-2M4B | 1/8 MNPT By 1/4 Hose Barb Elbow Forged B |
| BHME-2M5B | 1/8 MNPT By 5/16 Hose Barb Elbow Forged |
| BHME-2M6B | 1/8 MNPT By 3/8 Barb Elbow Forged |
| BHME-38M18B-R2 | 3/8 MNPT By 1/8 Hose Barb Elbow Forged 2 Piece Unit |
| BHME-4M3B | 1/4 MNPT by 3/16 Hose Barb Elbow Forged |
| BHME-4M4B | 1/4 MNPT By 1/4 Hose Barb Elbow Forged B |
| BHME-4M5B | 1/4 MNPT by 5/16 Hose Barb Elbow Forged |
| BHME-4M6B | 1/4 MNPT by 3/8 Hose Barb Elbow Forged B |
| BHME-4M8B | 1/4 MNPT By 1/2 Hose Barb Elbow Forged |
| BHME-6M4B-B | 3/8 MNPT By 1/4 Hose Barb Elbow Barstock |
| BHME-6M5B | 3/8 MNPT By 5/16 Hose Barb Elbow Forged |
| BHME-6M6B | 3/8 MNPT By 3/8 Hose Barb Elbow Forged B |
| BHME-6M8B | 3/8 MNPT By 1/2 Hose Barb Elbow Forged B |
| BHME-8M6B | 1/2 MNPT By 3/8 Hose Barb Elbow Forged |
| BHME-8M8B | 1/2 MNPT By 1/2 Hose Barb Elbow Forged |
| BHME-12M12B | 3/4 MNPT by 3/4 Barb Elbow |
| BHME-16M12B | 1 Inch MNPT by 3/4 Barb Elbow |

T-W SERIES



T-W Series is a precision, equal single barbed tee connector. These tees are made of White Nylon or Polypropylene. Barb sizes are 1/16 inch, 3/32 inch, and 1/8 inch.

| SKU | Description |
|-------------|---|
| T-W-18NPP | 1/8 inch Natural Polypropylene Single Barbed Precision Tee Connector |
| T-W-18-WN | 1/8 inch White Nylon Single Barbed Precision Tee Connector |
| T-W-1B-NPP | 1/16 inch Natural Polypropylene Single Barbed Precision Tee Connector |
| T-W-1B-WN | 1/16 inch White Nylon Single Barbed Precision Tee Connector |
| T-W-332-NPP | 3/32 inch Natural Polypropylene Single Barbed Precision Tee Connector |
| T-W-332-WN | 3/32 inch White Nylon Single Barbed Precision Tee Connector |

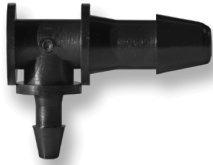
SSES SERIES



The SSES Series are 304 Stainless Steel 90° elbow hose barb splicer fittings. These elbows are intended to be used with hose clamps or similar clamps. Working temperatures are from -40° F to +160° F. Maximum working pressure is 150 psi. Available in barb sizes of 1/4 inch and 3/8 inch.

| SKU | Description |
|-----------|--|
| SSES-4B4B | 1/4 Barb by 1/4 Barb 304 Stainless Steel 90° Elbow |
| SSES-6B6B | 3/8 Barb by 3/8 Barb 304 Stainless Steel 90° Elbow |

CPL SERIES



The CPL Series are equal or reducing elbow connectors. This series of single barbed elbows are available in Natural and Black Nylon, Natural Polypropylene, PVDF, and Polyethylene. The barb sizes are 1/16 inch, 3/32 inch, 1/8 inch, 5/32 inch, 3/16 inch, and 1/4 inch.

| SKU | Description |
|------------|--------------------------------------|
| CPL-1B | 1/16 Barb Elbow |
| CPL-2B | 1/8 Barb Elbow |
| CPL-332B | 3/32 Barb Elbow |
| CPL-2B1B | 1/8 Barb to 1/16 Barb Elbow Reducer |
| CPL-2B332B | 1/8 Barb by 3/32 Barb Elbow Reducer |
| CPL-332B1B | 3/32 Barb by 1/16 Barb Elbow Reducer |
| CPL-3B1B | 3/16 Barb by 1/8 Barb Elbow Reducer |
| CPL-3B2B | 3/16 Barb by 1/8 Barb Elbow Reducer |
| CPL-4B1B | 1/4 Barb by 1/16 Barb Elbow Reducer |
| CPL-4B2B | 1/4 Barb by 1/8 Barb Elbow Reducer |
| CPL-4B332B | 1/4 Barb by 3/32 Barb Elbow Reducer |
| CPL-532B1B | 5/32 Barb by 1/16 Barb Elbow Reducer |
| CPL-532B2B | 5/32 Barb by 1/8 Barb Elbow Reducer |

L-IG SERIES



The L-IG Series are multi-barbed elbows made of Black and White Nylon and Gray Polypropylene. The ports are 1/16 inch and 1/8 inch. The maximum working pressure is 125 psi and the temperature ranges are: Nylon -50° F to 180° F; Polypropylene -40° F to 200° F.

| SKU | Description |
|-------------|---|
| L-IG-1B-BN | 1/16 inch Black Nylon Multi-Barbed Elbow |
| L-IG-1B-GPP | 1/16 inch Gray Polypropylene Multi-Barbed Elbow |
| L-IG-1B-WN | 1/16 inch White Nylon Multi-Barbed Elbow |
| L-IG-2B-BN | 1/8 inch Black Nylon Multi-Barbed Elbow |
| L-IG-2B-GPP | 1/8 inch Gray Polypropylene Multi-Barbed Elbow |
| L-IG-2B-WN | 1/8 inch White Nylon Multi-Barbed Elbow |



Y-T SERIES

Y-T Series is a multi-barbed Wye connector and is available in Nylon and Black Polypropylene. This connector comes in three different equal barb sizes: 1/4 inch, 3/8 inch, and 1/2 inch.

| SKU | Description |
|------------|---|
| Y-T-4B-BPP | 1/4 inch Multi-Barbed Black Polypropylene Wye Connector |
| Y-T-4B-NN | 1/4 inch Multi-Barbed Natural Nylon Wye Connector |
| Y-T-6B-BPP | 3/8 inch Multi-Barbed Black Polypropylene Wye Connector |
| Y-T-6B-NN | 3/8 inch Multi-Barbed Natural Nylon Wye Connector |
| Y-T-8B-BPP | 1/2 inch Multi-Barbed Black Polypropylene Wye Connector |
| Y-T-8B-NN | 1/2 inch Multi-Barbed Natural Nylon Wye Connector |



DC SERIES

The DC Series Brass bite-style multi-barb male connector comes in barb sizes of 5/32 inch, 1/4 inch, 3/8 inch, and 1/2 inch for ID tube sizes of .096 inch, .170 inch, .250 inch, and .375 inch. Also available in a reducer connector. The barb sizes for the reducer connector are 1/4 inch by 5/32 inch, 1/4 inch by 3/8 inch, 1/4 inch by 1/2 inch, and 3/8 inch by 1/2 inch for ID tube sizes of .096 inch, .170 inch, .250 inch, and .375 inch. Working temperatures are from -65° F to 90° F. The maximum working pressure is 150 psi. Made for Polyethylene tubing.

| SKU | Description |
|-----------|--|
| DC-332 | 3/32 inch Bite-Style Multi-Barbed Brass Connector |
| DC-250 | 1/4 inch Bite-Style Multi-Barbed Brass Connector |
| DC-375 | 3/8 inch Bite-Style Multi-Barbed Brass Connector |
| DC-170 | .170 inch Bite-Style Multi-Barbed Brass Connector |
| DC-375250 | .375 inch by .250 inch Bite-Style Multi-Barbed Brass Connector |
| DC-375170 | .375 inch by .170 inch Bite-Style Multi-Barbed Brass Connector |

| SKU | Description |
|-----------|--|
| DC-250170 | .250 inch by .170 inch Bite-Style Multi-Barbed Brass Connector |
| DC-170332 | .170 inch by 3/32 inch Bite-Style Multi-Barbed Brass Connector |

L SERIES



The L Series are standard triple-barbed connectors 90 degree L offered in both equal and reducing sizes. These elbow connectors are molded of Natural Nylon, Polyethylene, and Black Polypropylene. Equal sizes are 1/4 inch, 5/16 inch, 3/8 inch, 1/2 inch, 5/8 inch, 3/4 inch, 1 inch, 1-1/4 inch, and 1-1/2 inch. Reducing sizes are 1/2 inch by 1/4 inch and 1/2 inch by 3/8 inch. Barbed fittings over 1 inch are not offered in Polyethylene.

[table "l" not found /]

GHB-S SERIES



The GHB-S Series are barbed garden hose adapter inserts for use with 3/4 inch GHN Garden hose nut or FPN series, 3/4 Inch Female pipe thread nut. This series is available in standard Nylon and Black Polypropylene. Barb sizes come in: 1/4 inch, 3/8 inch, 1/2 inch, 5/8 inch, and 3/4 inch. Also available is a 1/4 Male NPT. Washers with filters are also part of this series.

| SKU | Description |
|---------------|--|
| GHB-S- 10B-N | Garden Hose Stem 5/8 |
| GHB-S-11B-N | Garden Hose Stem 11/16 |
| GHB-S-12B-N | Garden Hose Stem 3/4 |
| GHB-S-3B-N | Garden Hose Stem 3/16 |
| GHB-S-4B-BKPP | Garden Hose Stem 1/4 Black Polypropylene |
| GHB-S-4B-N | Garden Hose Stem 1/4 |
| GHB-S-532B-N | Garden Hose Stem 5/32 |
| GHBS-650 | Garden Hose by .650 Slip |

| SKU | Description |
|------------|----------------------|
| GHB-S-6B-N | Garden Hose Stem 3/8 |
| GHB-S-8B-N | Garden Hose Stem 1/2 |

AF SERIES



The AF Series is an FNPT to standard triple barbed hose adapter and is molded of NSF-listed Natural Nylon. Natural and Black Polypropylene are optional (shown). Available in combinations of these sizes: 1/8 inch, 3/16 inch, 1/4 inch, 3/8 inch, 1/2 inch, 5/8 inch, and 3/4 inch. BSPT threads are available.

| SKU | Description |
|--------------|---|
| AF-2F3B-BKPP | 1/8 inch FNPT by 3/16 inch ID Black Polypropylene Hose Barbed Adapter |
| AF-2F3B-NN | 1/8 inch FNPT by 3/16 inch ID Natural Nylon Hose Barbed Adapter |
| AF-2F3B-NPP | 1/8 inch FNPT by 3/16 inch ID Natural Polypropylene Hose Barbed Adapter |
| AF-2F4B-BKPP | 1/8 inch FNPT by 1/4 inch ID Black Polypropylene Hose Barbed Adapter |
| AF-2F4B-NN | 1/8 inch FNPT by 1/4 inch ID Natural Nylon Hose Barbed Adapter |
| AF-2F4B-NPP | 1/8 inch FNPT by 1/4 inch ID Natural Polypropylene Hose Barbed Adapter |
| AF-2F6B-BKPP | 1/8 inch FNPT by 3/8 inch ID Black Polypropylene Hose Barbed Adapter |
| AF-2F6B-NN | 1/8 inch FNPT by 3/8 inch ID Natural Nylon Hose Barbed Adapter |
| AF-2F6B-NPP | 1/8 inch FNPT by 3/8 inch ID Natural Polypropylene Hose Barbed Adapter |
| AF-4F3B-BKPP | 1/4 inch FNPT by 3/16 inch ID Black Polypropylene Hose Barbed Adapter |
| AF-4F3B-NN | 1/4 inch FNPT by 3/16 inch ID Natural Nylon Hose Barbed Adapter |
| AF-4F3B-NPP | 1/4 inch FNPT by 3/16 inch ID Natural Polypropylene Hose Barbed Adapter |
| AF-4F4B-BKPP | 1/4 inch FNPT by 1/4 inch ID Black Polypropylene Hose Barbed Adapter |
| AF-4F4B-NN | 1/4 inch FNPT by 1/4 inch ID Natural Nylon Hose Barbed Adapter |
| AF-4F4B-NPP | 1/4 inch FNPT by 1/4 inch ID Natural Polypropylene Hose Barbed Adapter |
| AF-4F6B-BKPP | 1/4 inch FNPT by 3/8 inch ID Black Polypropylene Hose Barbed Adapter |
| AF-4F6B-NN | 1/4 inch FNPT by 3/8 inch ID Natural Nylon Hose Barbed Adapter |

| SKU | Description |
|---------------|--|
| AF-4F6B-NPP | 1/4 inch FNPT by 3/8 inch ID Natural Polypropylene Hose Barbed Adapter |
| AF-4F8B-NN | 1/4 inch FNPT by 1/2 inch ID Natural Nylon Hose Barbed Adapter |
| AF-6F10B-BKPP | 3/8 inch FNPT by 5/8 inch ID Black Polypropylene Hose Barbed Adapter |
| AF-6F10B-NN | 3/8 inch FNPT by 5/8 inch ID Natural Nylon Hose Barbed Adapter |
| AF-6F4B-BKPP | 3/8 inch FNPT by 1/4 inch ID Black Polypropylene Hose Barbed Adapter |
| AF-6F4B-NN | 3/8 inch FNPT by 1/4 inch ID Natural Nylon Hose Barbed Adapter |
| AF-6F4B-NPP | 3/8 inch FNPT by 1/4 inch ID Natural Polypropylene Hose Barbed Adapter |
| AF-6F6B-BKPP | 3/8 inch FNPT by 3/8 inch ID Black Polypropylene Hose Barbed Adapter |
| AF-6F6B-NN | 3/8 inch FNPT by 3/8 inch ID Natural Nylon Hose Barbed Adapter |
| AF-6F6B-NPP | 3/8 inch FNPT by 3/8 inch ID Natural Polypropylene Hose Barbed Adapter |
| AF-6F8B-BKPP | 3/8 inch FNPT by 1/2 inch ID Black Polypropylene Hose Barbed Adapter |
| AF-6F8B-NN | 3/8 inch FNPT by 1/2 inch ID Natural Nylon Hose Barbed Adapter |
| AF-6F8B-NPP | 3/8 inch FNPT by 1/2 inch ID Natural Polypropylene Hose Barbed Adapter |
| AF-8F10B-BKPP | 1/2 inch FNPT by 5/8 inch ID Black Polypropylene Hose Barbed Adapter |
| AF-8F10B-NN | 1/2 inch FNPT by 5/8 inch ID Natural Nylon Hose Barbed Adapter |
| AF-8F10B-NPP | 1/2 inch FNPT by 5/8 inch ID Natural Polypropylene Hose Barbed Adapter |
| AF-8F12B-BKPP | 1/2 inch FNPT by 3/4 inch ID Black Polypropylene Hose Barbed Adapter |
| AF-8F12B-NN | 1/2 inch FNPT by 3/4 inch ID Natural Nylon Hose Barbed Adapter |
| AF-8F12B-NPP | 1/2 inch FNPT by 3/4 inch ID Natural Polypropylene Hose Barbed Adapter |
| AF-8F4B-BKPP | 1/2 inch FNPT by 1/4 inch ID Black Polypropylene Hose Barbed Adapter |
| AF-8F4B-NN | 1/2 inch FNPT by 1/4 inch ID Natural Nylon Hose Barbed Adapter |
| AF-8F4B-NPP | 1/2 inch FNPT by 1/4 inch ID Natural Polypropylene Hose Barbed Adapter |
| AF-8F6B-BKPP | 1/2 inch FNPT by 3/8 inch ID Black Polypropylene Hose Barbed Adapter |
| AF-8F6B-NN | 1/2 inch FNPT by 3/8 inch ID Natural Nylon Hose Barbed Adapter |
| AF-8F6B-NPP | 1/2 inch FNPT by 3/8 inch ID Natural Polypropylene Hose Barbed Adapter |
| AF-8F8B-BKPP | 1/2 inch FNPT by 1/2 inch ID Black Polypropylene Hose Barbed Adapter |
| AF-8F8B-NN | 1/2 inch FNPT by 1/2 inch ID Natural Nylon Hose Barbed Adapter |
| AF-8F8B-NPP | 1/2 inch FNPT by 1/2 inch ID Natural Polypropylene Hose Barbed Adapter |

| SKU | Description |
|----------------|--|
| AF-12F8B-BKPP | 3/4 inch FNPT by 1/2 inch ID Black Polypropylene Hose Barbed Adapter |
| AF-12F8B-NN | 3/4 inch FNPT by 1/2 inch ID Natural Nylon Hose Barbed Adapter |
| AF-12F10B-BKPP | 3/4 inch FNPT by 5/8 inch ID Black Polypropylene Hose Barbed Adapter |
| AF-12F10B-NN | 3/4 inch FNPT by 5/8 inch ID Natural Nylon Hose Barbed Adapter |
| AF-12F12B-BKPP | 3/4 inch FNPT by 3/4 inch ID Black Polypropylene Hose Barbed Adapter |
| AF-12F12B-NN | 3/4 inch FNPT by 3/4 inch ID Natural Nylon Hose Barbed Adapter |
| AF-12F12B-NPP | 3/4 inch FNPT by 3/4 inch ID Natural Polypropylene Hose Barbed Adapter |



YSP SERIES

YSP Series is a low-pressure wye connector made of FDA-listed Natural Polypropylene. This wye connector comes in six equal barb sizes: 1/8 inch, 3/16 inch, 1/4 inch, 5/16 inch, 3/8 inch, and 1/2 inch. The maximum pressure is 20 psi and the maximum working temperature is 198°F. This wye is autoclavable.

| SKU | Description |
|------------|--|
| YSP-2B-FDA | 1/8 inch FDA Polypropylene Multi-Barbed Wye Connector |
| YSP-3B-FDA | 3/16 inch FDA Polypropylene Multi-Barbed Wye Connector |
| YSP-4B-FDA | 1/4 inch FDA Polypropylene Multi-Barbed Wye Connector |
| YSP-5B-FDA | 5/16 inch FDA Polypropylene Multi-Barbed Wye Connector |
| YSP-6B-FDA | 3/8 inch FDA Polypropylene Multi-Barbed Wye Connector |
| YSP-8B-FDA | 1/2 inch FDA Polypropylene Multi-Barbed Wye Connector |



AF-IG SERIES

The AF-IG Series Polysulfone Filters are 10-32 by 1/16 or 1/8 inch Barbs with 5, 25, 43, or 73 micron and 316 Stainless Steel Filter.

| SKU | Description |
|---------------|---|
| AF-IG-101B-43 | 10-32 by 1/16 inch Barb 43 Micron Stainless Steel |
| AF-IG-102B-5 | 10-32 by 1/8 inch Barb 5 Micron 316 Stainless Steel |
| AF-IG-1B-5 | 10-32 by 1/16 inch Barb 5 Micron |
| AF-IG-1B-25 | 10-32 by 1/16 inch Barb 25 Micron |
| AF-IG-1B-43 | 10-32 by 1/16 inch Barb 43 Micron |
| AF-IG-1B-73 | 10-32 by 1/16 inch Barb 73 Micron |
| AF-IG-2B-5 | 10-32 by 1/8 inch Barb 5 Micron |
| AF-IG-2B-25 | 10-32 by 1/8 inch Barb 25 Micron |
| AF-IG-2B-43 | 10-32 by 1/8 inch Barb 43 Micron |
| AF-IG-2B-73 | 10-32 by 1/8 inch Barb 73 Micron |

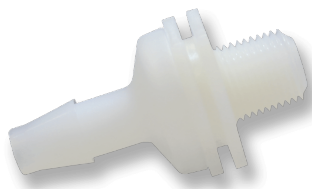


FV SERIES- FILTER

The FV Series single barbed Inline Filter is used for compressed air or vacuum. These units have a Polypropylene housing with a porous Polyethylene filter. They can be used to protect vacuum pump switches and valves from contamination. Also, units are available with a 1/8 inch barb or with a male luer fitting on each end, measuring 2.4 inches in length and .75 inch in diameter. Filters are available with 10 or 25-micron filters. In addition, the recommended working pressure is 65 psi.

| SKU | Description |
|----------|---------------------------------------|
| FV-2B-10 | 1/8 inch Barb 10 Micron Vacuum Filter |
| FV-2B-25 | 1/8 inch Barb 25 Micron Vacuum Filter |
| FV-ML-10 | Male Luer 10 Micron Vacuum Filter |
| FV-ML-25 | Male Luer 25 Micron Vacuum Filter |

CMKV SERIES



The CMKV Series Plastic Check Valves are 1/8 inch Male NPT by Barb sizes of 1/8 inch, 3/16 inch, 1/4 inch, and 3/8 inch. The flow is from thread to barb. Material / Disc combinations are available in PVDF with FKM, Polypropylene with FKM, Polycarbonate with Neoprene, Polycarbonate with Silicone, Nylon with Silicone, and Nylon with Neoprene.

| SKU | Description |
|-------------|---|
| CMKV-18B | 1/8 MNPT by 1/8 Barb PVDF/FKM Check Valve |
| CMKV-14B-NS | 1/8 MNPT by 1/4 Barb Nylon/Silicone Check Valve |
| CMKV-316B | 1/8 MNPT by 3/16 Barb PVDF/FKM Check Valve |

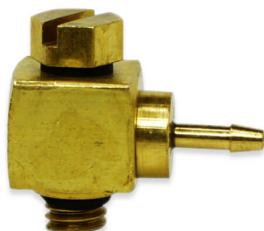
186-2 SERIES



186-2 Series is a Brass Barb Fittings are designed to fit .073 holes using a Loctite adhesive.

| SKU | Description |
|-------|--|
| 186-2 | 1/16 inch Barbed Brass Bondable Insert |

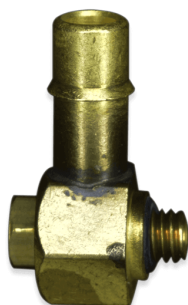
AED SERIES



The AED Series are Adjustable 10-32 inch male UNF to barb Brass elbows in 1/16 inch or 1/8 inch single barbs.

| SKU | Description |
|-----------|--|
| AED-1018 | 10-32 inch Male UNF by 1/8 inch Barbed Adjustable Elbow |
| AED-10X1B | 10-32 inch Male UNF by 1/16 inch Barbed Adjustable Elbow |
| AED-10X2B | 10-32 inch Male UNF by 1/8 inch Barbed Adjustable Elbow |

AEM SERIES

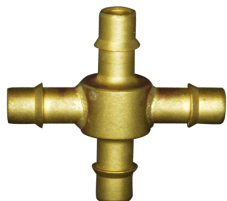


The AEM (formerly NAE) Series are adjustable Brass adapters with bite-style barbs.

| SKU | Description |
|-------------------------|--|
| AEM-10-078B | 10-32 inch Male UNF by .078 Adjustable Elbow |
| AEM-10-1B | 10-32 inch Male UNF by 1/16 inch Adjustable Elbow |
| AEM-10-1B-OS | 10-32 inch Male UNF by 1/16 inch Adjustable Elbow O-Ring Slotted |
| AEM-10-2B | 10-32 inch Male UNF by 1/8 inch Adjustable Elbow |
| AEM-10-2B-OS | 10-32 inch Male UNF by 1/8 inch Adjustable Elbow O-Ring Slot |
| AEM-10-332B | 10-32 inch Male UNF by 3/32 inch Adjustable Elbow |
| AEM-10-332B-732 Hex Hgt | 10-32 inch Male UNF by 3/32 inch Adjustable Elbow 7/32 inch Hex |
| AEM-10-332B-170 Hex Hgt | 10-32 inch Male UNF by 3/32 inch Adjustable Elbow .170 inch Hex |
| AEM-10-364B | 10-32 inch Male UNF by 3/64 inch Adjustable Elbow |
| AEM-10-3B | 10-32 inch Male UNF by 3/16 inch Adjustable Elbow |
| AEM-10-532B | 10-32 inch Male UNF by 5/32 inch Adjustable Elbow |
| AEM-10-564B | 10-32 inch Male UNF by 5/64 inch Adjustable Elbow |
| AEM-10-732 | 10-32 inch Male UNF by 7/32 inch Adjustable Elbow |
| AEM-1428-170B | 1/4-28 inch Male UNF by .170 inch Adjustable Elbow |

| SKU | Description |
|------------------|---|
| AEM-1428-170B-45 | 1/4-28 inch Male UNF by .170 inch Barb Elbow Adjustable 45° |
| AEM-1428-1B | 1/4-28 inch Male UNF by 1/16 inch Adjustable Elbow |
| AEM-1428-2B | 1/4-28 inch Male UNF by 1/8 inch Adjustable Elbow |
| AEM-1428-332B | 1/4-28 inch Male UNF by 3/32 inch Adjustable Elbow |
| AEM-1428-364B | 1/4-28 inch Male UNF by 3/64 inch Adjustable Elbow |
| AEM-1428-3B | 1/4-28 inch Male UNF by 3/16 inch Adjustable Elbow |
| AEM-1428-4B | 1/4-28 inch Male UNF by 1/4 inch Adjustable Elbow |
| AEM-1428-4B-O | 1/4-28 inch Male UNF by 1/4 inch Adjustable Elbow with O-Ring |
| AEM-1428-532B | 1/4-28 inch Male UNF by 5/32 inch Adjustable Elbow |
| NAE-1428-564B | 1/4-28 inch Male UNF by 5/64 inch Adjustable Elbow |
| AEM-1428-732B | 1/4-28 inch Male UNF by 7/32 inch Adjustable Elbow |
| AEM-3M170B | 3mm Male Adjustable Elbow by .170 Barb |
| AEM-3M1B | 3mm Male Adjustable Elbow by 1/16 inch Barb |
| AEM-3M2B | 3mm Male Adjustable Elbow by 1/8 inch Barb |
| AEM-3M332B | 3mm Male Adjustable Elbow by 3/32 inch Barb |
| AEM-3M364B | 3mm Male Adjustable Elbow by 3/64 inch Barb |
| AEM-3M532B | 3mm Male Adjustable Elbow by 5/32 inch Barb |
| AEM-3M564B | 3mm Male Adjustable Elbow by 5/64 inch Barb |
| AEM-4M170B | 4mm Male Adjustable Elbow by .170 Barb |
| AEM-4M1B | 4mm Male Adjustable Elbow by 1/16 inch Barb |
| AEM-4M2B | 4mm Male Adjustable Elbow by 1/8 inch Barb |
| AEM-4M332B | 4mm Male Adjustable Elbow by 3/32 inch Barb |
| AEM-4M3B | 4mm Male Adjustable Elbow by 3/16 inch Barb |
| AEM-4M4B | 4mm Male Adjustable Elbow by 1/4 inch Barb |
| AEM-4M532B | 4mm Male Adjustable Elbow by 5/32 inch Barb |
| AEM-4M564B | 4mm Male Adjustable Elbow by 5/64 inch Barb |
| AEM-4M732B | 4mm Male Adjustable Elbow by 7/32 inch Barb |
| AEM-5M170B | 5mm Male Adjustable Elbow by .170 Barb |
| AEM-5M1B | 5mm Male Adjustable Elbow by 1/16 inch Barb |
| AEM-5M2B | 5mm Male Adjustable Elbow by 1/8 inch Barb |
| AEM-5M332B | 5mm Male Adjustable Elbow by 3/32 inch Barb |
| AEM-5M364B | 5mm Male Adjustable Elbow by 3/64 inch Barb |
| AEM-5M3B | 5mm Male Adjustable Elbow by 3/16 inch Barb |
| AEM-5M532B | 5mm Male Adjustable Elbow by 5/32 inch Barb |
| AEM-5M564B | 5mm Male Adjustable Elbow by 5/64 inch Barb |
| AEM-5M732B | 5mm Male Adjustable Elbow by 7/32 inch Barb |

BCX SERIES



The BCX and the BCXR Series are bite-style cross fittings. The BCXR Series is the reduced version of the BCX Series. These crosses have single sharp barbs to securely hold the tubing from slipping or pulling off. They are excellent fittings for use with Polyurethane or Polyethylene tubing. Made in Brass, Nickel-Plated Brass, or 303 Stainless Steel. Available barb sizes range from 1/16 inch to 3/8 inch.

| SKU | Description |
|------------------|--|
| BCX-078B | .078 inch Barbed Brass Cross |
| BCX-1.25B | .078 inch Barbed Brass Cross |
| BCX-170B | .170 inch Barbed Brass Cross |
| BCX-1B | 1/16 inch Barbed Brass Cross |
| BCX-2B | 1/8 inch Barbed Brass Cross |
| BCX-332B | 3/32 inch Barbed Brass Cross |
| BCX-3B | 3/16 inch Barbed Brass Cross |
| BCX-4B | 1/4 inch Barbed Brass Cross |
| BCX-532B | 5/32 inch Barbed Brass Cross |
| BCX-6B | 3/8 inch Barbed Brass Cross |
| BCXR-3X170B078B | .170 inch by .078 inch Barbed Reducing Brass Cross |
| BCXR-3X170B1.25B | .170 inch by .078 inch Barbed Reducing Brass Cross |
| BCXR-3X1B2B | 1/16 inch by 1/8 inch Barbed Reducing Brass Cross |

BI SERIES



The BI Series are Brass or 303 Stainless Steel bite-style barb inserts for manifold applications. Available in 1/16 inch, .078 inch, 3/32 inch, 1/8 inch, 5/32 inch, 3/16 inch, 1/4 inch, 5/16 inch, and 3/8 inch.

| SKU | Description |
|---------|-------------------------|
| BI-78B | 0.078 Barbed Insert |
| BI-332B | 3/32 inch Barbed Insert |
| BI-1B | 1/16 inch Barbed Insert |
| BI-532B | 5/32 inch Barbed Insert |
| BI-2B | 1/8 inch Barbed Insert |
| BI-3B | 3/16 inch Barbed Insert |

| SKU | Description |
|-------|-------------------------|
| BI-4B | 1/4 inch Barbed Insert |
| BI-5B | 5/16 inch Barbed Insert |
| BI-6B | 3/8 inch Barbed Insert |

HLB SERIES



The HLB Series are Brass hexless 10-32 UNF Connectors available in .170 inch, 1/16 inch, or 1/8 inch barbs.

| SKU | Description |
|---------|--|
| HLB-170 | 10-32 inch UNF by .170 inch Hexless Barb Brass Connector |
| HLB-16 | 10-32 inch UNF by 1/16 inch Hexless Barb Brass Connector |
| HLB-18 | 10-32 inch UNF by 1/8 inch Hexless Barb Brass Connector |

FAE SERIES



The FAE Series are Brass Elbows with female bite-style barbs in 1/8 inch or 1/4 inch to 1/16 inch up to 3/8 inch.

| SKU | Description |
|------------|---|
| FAE-2F732B | 1/8 inch FNPT by 7/32 inch Barb Brass Elbow Adapter |
| FAE-2F170B | 1/8 inch FNPT by .170 inch Barb Brass Elbow Adapter |
| FAE-2F078B | 1/8 inch FNPT by .078 inch Barb Brass Elbow Adapter |
| FAE-2F332B | 1/8 inch FNPT by 3/32 inch Barb Brass Elbow Adapter |
| FAE-2F1B | 1/8 inch FNPT by 1/16 inch Barb Brass Elbow Adapter |
| FAE-2F2B | 1/8 inch FNPT by 1/8 inch Barb Brass Elbow Adapter |
| FAE-2F3B | 1/8 inch FNPT by 3/16 inch Barb Brass Elbow Adapter |
| FAE-2F564B | 1/8 inch FNPT by 5/64 inch Barb Brass Elbow Adapter |
| FAE-4F1B | 1/4 inch FNPT by 1/16 inch Barb Brass Elbow Adapter |

| SKU | Description |
|------------|---|
| FAE-4F564B | 1/4 inch FNPT by 5/64 inch Barb Brass Elbow Adapter |
| FAE-4F332B | 1/4 inch FNPT by 3/32 inch Barb Brass Elbow Adapter |
| FAE-4F2B | 1/4 inch FNPT by 1/8 inch Barb Brass Elbow Adapter |
| FAE-4F170B | 1/4 inch FNPT by .170 inch Barb Brass Elbow Adapter |
| FAE-4F3B | 1/4 inch FNPT by 3/16 inch Barb Brass Elbow Adapter |
| FAE-4F4B | 1/4 inch FNPT by 1/4 inch Barb Brass Elbow Adapter |



FAT SERIES

The FAT Series are Brass female adapters with bite-style barbs. Any different Barb size can be placed on any hex. FNPT thread sizes available for this series are 1/8 inch and 1/4 inch. Barb sizes range from 5/64 inch to 3/8 inch.

| SKU | Description |
|------------|---|
| FAT-2F1B | 1/8 inch FNPT by 1/16 inch Brass Barbed Tee Adapter |
| FAT-2F564B | 1/8 inch FNPT by 5/64 inch Brass Barbed Tee Adapter |
| FAT-2F2B | 1/8 inch FNPT by 1/8 inch Brass Barbed Tee Adapter |
| FAT-2F170B | 1/8 inch FNPT by .170 inch Brass Barbed Tee Adapter |
| FAT-2F6B | 1/8 inch FNPT by 3/8 inch Brass Barbed Tee Adapter |
| FAT-4F1B | 1/4 inch FNPT by 1/16 inch Brass Barbed Tee Adapter |
| FAT-4F564B | 1/4 inch FNPT by 5/64 inch Brass Barbed Tee Adapter |
| FAT-4F2B | 1/4 inch FNPT by 1/8 inch Brass Barbed Tee Adapter |
| FAT-4F170B | 1/4 inch FNPT by .170 inch Brass Barbed Tee Adapter |
| FAT-4F6B | 1/4 inch FNPT by 3/8 inch Brass Barbed Tee Adapter |

FTM SERIES



The FTM Series are Brass female adapter tees in 1/8 inch or 1/4 inch threads and 1/16 inch to 3/8 inch bite-style barbs.

| SKU | Description |
|------------|--|
| FTM-2F732B | 1/8 inch FNPT by 7/32 inch Bite Style Barbed Adapter Tee |
| FTM-2F078B | 1/8 inch FNPT by .078 inch Bite Style Barbed Adapter Tee |
| FTM-2F332B | 1/8 inch FNPT by 3/32 inch Bite Style Barbed Adapter Tee |
| FTM-2F170B | 1/8 inch FNPT by .170 inch Bite Style Barbed Adapter Tee |
| FTM-2F1B | 1/8 inch FNPT by 1/16 inch Bite Style Barbed Adapter Tee |
| FTM-2F2B | 1/8 inch FNPT by 1/8 inch Bite Style Barbed Adapter Tee |
| FTM-2F3B | 1/8 inch FNPT by 3/16 inch Bite Style Barbed Adapter Tee |
| FTM-2F4B | 1/8 inch FNPT by 1/4 inch Bite Style Barbed Adapter Tee |
| FTM-2F564B | 1/8 inch FNPT by 5/64 inch Bite Style Barbed Adapter Tee |
| FTM-4F170B | 1/4 inch FNPT by 7/32 inch Bite Style Barbed Adapter Tee |
| FTM-4F1B | 1/4 inch FNPT by 1/16 inch Bite Style Barbed Adapter Tee |
| FTM-4F2B | 1/4 inch FNPT by 1/8 inch Bite Style Barbed Adapter Tee |
| FTM-4F332B | 1/4 inch FNPT by 3/32 inch Bite Style Barbed Adapter Tee |
| FTM-4F3B | 1/4 inch FNPT by 3/16 inch Bite Style Barbed Adapter Tee |
| FTM-4F4B | 1/4 inch FNPT by 1/4 inch Bite Style Barbed Adapter Tee |
| FTM-4F564B | 1/4 inch FNPT by 5/64 inch Bite Style Barbed Adapter Tee |
| FTM-4F6B | 1/4 inch FNPT by 3/8 inch Bite Style Barbed Adapter Tee |

FE SERIES



The FE Series are Brass female by bite-style barb adapter elbows at 90° and 45° angles. Female NPT thread sizes available are 1/16 inch, 1/8 inch, 3/8 inch, and 1/4 inch. Barbs come in a wide range of sizes, which are listed below. Also available in 303 Stainless Steel.

| SKU | Description |
|-------------|--|
| FE-2F078B | 1/8 inch FNPT by .078 inch Barb Brass Elbow Adapter |
| FE-2F332B | 1/8 inch FNPT by 3/32 inch Barb Brass Elbow Adapter |
| FE-2F170B | 1/8 inch FNPT by .170 inch Barb Brass Elbow Adapter |
| FE-2F1B | 1/8 inch FNPT by 1/16 inch Barb Brass Elbow Adapter |
| FE-2F532B | 1/8 inch FNPT by 5/32 inch Barb Brass Elbow Adapter |
| FE-2F2B | 1/8 inch FNPT by 1/8 inch Barb Brass Elbow Adapter |
| FE-2F3B | 1/8 inch FNPT by 3/16 inch Barb Brass Elbow Adapter |
| FE-2F4B | 1/8 inch FNPT by 1/4 inch Barb Brass Elbow Adapter |
| FE-2F564B | 1/8 inch FNPT by 5/64 inch Barb Brass Elbow Adapter |
| FE-2F5B | 1/8 inch FNPT by 5/16 inch Barb Brass Elbow Adapter |
| FE-2F6B | 1/8 inch FNPT by 3/8 inch Barb Brass Elbow Adapter |
| FE-4F1B | 1/4 inch FNPT by 1/16 inch Barb Brass Elbow Adapter |
| FE-4F2B | 1/4 inch FNPT by 1/8 inch Barb Brass Elbow Adapter |
| FE-4F3B | 1/4 inch FNPT by 3/16 inch Barb Brass Elbow Adapter |
| FE-4F4B | 1/4 inch FNPT by 1/4 inch Barb Brass Elbow Adapter |
| FE-4F564B | 1/4 inch FNPT by 5/64 inch Barb Brass Elbow Adapter |
| FE-4F6B | 1/4 inch FNPT by 3/8 inch Barb Brass Elbow Adapter |
| FE-4F732B | 1/4 inch FNPT by 7/32 inch Barb Brass Elbow Adapter |
| FE-4F170B | 1/4 inch FNPT by .170 inch Barb Brass Elbow Adapter |
| FE-6F170B | 3/8 inch FNPT by .170 inch Barb Brass Elbow Adapter |
| FE-6F1B | 3/8 inch FNPT by 1/16 inch Barb Brass Elbow Adapter |
| FE-6F2B | 3/8 inch FNPT by 1/8 inch Barb Brass Elbow Adapter |
| FE-6F332B | 3/8 inch FNPT by 3/32 inch Barb Brass Elbow Adapter |
| FE-6F3B | 3/8 inch FNPT by 3/16 inch Barb Brass Elbow Adapter |
| FE-6F4B | 3/8 inch FNPT by 1/4 inch Barb Brass Elbow Adapter |
| FE-6F532B | 3/8 inch FNPT by 5/32 inch Barb Brass Elbow Adapter |
| FE-6F564B | 3/8 inch FNPT by 5/64 inch Barb Brass Elbow Adapter |
| FE-6F5B | 3/8 inch FNPT by 5/16 inch Barb Brass Elbow Adapter |
| FE-6F6B | 3/8 inch FNPT by 3/8 inch Barb Brass Elbow Adapter |
| FE45-1F170B | 1/16 inch FNPT by .170 inch Barb Brass 45° Elbow Adapter |
| FE45-1F1B | 1/16 inch FNPT by 1/16 inch Barb Brass 45° Elbow Adapter |
| FE45-1F2B | 1/16 inch FNPT by 1/8 inch Barb Brass 45° Elbow Adapter |
| FE45-1F332B | 1/16 inch FNPT by 3/32 inch Barb Brass 45° Elbow Adapter |

| SKU | Description |
|-------------|--|
| FE45-1F3B | 1/16 inch FNPT by 3/16 inch Barb Brass 45° Elbow Adapter |
| FE45-1F4B | 1/16 inch FNPT by 1/4 inch Barb Brass 45° Elbow Adapter |
| FE45-1F532B | 1/16 inch FNPT by 5/32 inch Barb Brass 45° Elbow Adapter |
| FE45-1F564B | 1/16 inch FNPT by 1/16 inch Barb Brass 45° Elbow Adapter |
| FE45-1F5B | 1/16 inch FNPT by 5/16 inch Barb Brass 45° Elbow Adapter |
| FE45-1F6B | 1/16 inch FNPT by 3/8 inch Barb Brass 45° Elbow Adapter |
| FE45-1F732B | 1/16 inch FNPT by 7/32 inch Barb Brass 45° Elbow Adapter |
| FE45-1F8B | 1/16 inch FNPT by 1/2 inch Barb Brass 45° Elbow Adapter |
| FE45-2F170B | 1/8 inc FNPT by .170 inch Barb Brass 45° Elbow Adapter |
| FE45-2F1B | 1/8 inch FNPT by 1/16 inch Barb Brass 45° Elbow Adapter |
| FE45-2F2B | 1/8 inch FNPT by 1/8 inch Barb Brass 45° Elbow Adapter |
| FE45-2F332B | 1/8 inch FNPT by 3/32 inch Barb Brass 45° Elbow Adapter |
| FE45-2F3B | 1/8 inch FNPT by 3/16 inch Barb Brass 45° Elbow Adapter |
| FE45-2F4B | 1/8 inch FNPT by 1/4 inch Barb Brass 45° Elbow Adapter |
| FE45-2F532B | 1/8 inch FNPT by 5/32 inch Barb Brass 45° Elbow Adapter |
| FE45-2F564B | 1/8 inch FNPT by 5/64 inch Barb Brass 45° Elbow Adapter |
| FE45-2F5B | 1/8 inch FNPT by 5/16 inch Barb Brass 45° Elbow Adapter |
| FE45-2F6B | 1/8 inch FNPT by 3/8 inch Barb Brass 45° Elbow Adapter |
| FE45-2F732B | 1/8 inch FNPT by 7/32 inch Barb Brass 45° Elbow Adapter |
| FE45-2F8B | 1/8 inch FNPT by 1/2 inch Barb Brass 45° Elbow Adapter |
| FE45-4F170B | 1/4 inch FNPT by .170 inch Barb Brass 45° Elbow Adapter |
| FE45-4F1B | 1/4 inch FNPT by 1/16 inch Barb Brass 45° Elbow Adapter |
| FE45-4F2B | 1/4 inch FNPT by 1/8 inch Barb Brass 45° Elbow Adapter |
| FE45-4F332B | 1/4 inch FNPT by 3/32 inch Barb Brass 45° Elbow Adapter |
| FE45-4F3B | 1/4 inch FNPT by 3/16 inch Barb Brass 45° Elbow Adapter |
| FE45-4F4B | 1/4 inch FNPT by 1/4 inch Barb Brass 45° Elbow Adapter |
| FE45-4F532B | 1/4 inch FNPT by 5/32 inch Barb Brass 45° Elbow Adapter |
| FE45-4F564B | 1/4 inch FNPT by 5/64 inch Barb Brass 45° Elbow Adapter |
| FE45-4F5B | 1/4 inch FNPT by 5/16 inch Barb Brass 45° Elbow Adapter |
| FE45-4F6B | 1/4 inch FNPT by 3/8 inch Barb Brass 45° Elbow Adapter |
| FE45-4F732B | 1/4 inch FNPT by 7/32 inch Barb Brass 45° Elbow Adapter |
| FE45-4F8B | 1/4 inch FNPT by 1/2 inch Barb Brass 45° Elbow Adapter |
| FE45-6F170B | 3/8 inch FNPT by .170 inch Barb Brass 45° Elbow Adapter |
| FE45-6F1B | 3/8 inch FNPT by 1/16 inch Barb Brass 45° Elbow Adapter |
| FE45-6F2B | 3/8 inch FNPT by 1/8 inch Barb Brass 45° Elbow Adapter |
| FE45-6F332B | 3/8 inch FNPT by 3/32 inch Barb Brass 45° Elbow Adapter |
| FE45-6F3B | 3/8 inch FNPT by 3/16 inch Barb Brass 45° Elbow Adapter |
| FE45-6F4B | 3/8 inch FNPT by 1/4 inch Barb Brass 45° Elbow Adapter |
| FE45-6F532B | 3/8 inch FNPT by 5/32 inch Barb Brass 45° Elbow Adapter |
| FE45-6F564B | 3/8 inch FNPT by 5/64 inch Barb Brass 45° Elbow Adapter |
| FE45-6F5B | 3/8 inch FNPT by 5/16 inch Barb Brass 45° Elbow Adapter |
| FE45-6F6B | 3/8 inch FNPT by 3/8 inch Barb Brass 45° Elbow Adapter |
| FE45-6F732B | 3/8 inch FNPT by 7/32 inch Barb Brass 45° Elbow Adapter |

| SKU | Description |
|-----------|--|
| FE45-6F8B | 3/8 inch FNPT by 1/2 inch Barb Brass 45° Elbow Adapter |

FA SERIES



The FA Series is Brass Female NPT by bite-style barb, in sizes ranging from 1/16 inch to 3/8 inch FNPT threads and 3/64 inch to 3/8 inch Barbs. Also available in Nickel Plate, 303 Stainless Steel, and 316 Stainless Steel.

For UNF and SAE Female Threads see FAU Series.

| Description | SKU | SKU | SKU | SKU | Description |
|--|--------------------|--|---|---|--|
| Female National Pipe Thread by Barb, Brass | FNPT by Barb Brass | Female National Pipe Thread by Barb, Nickel plated Brass | Female National Pipe Thread by Barb, 303 SS | Female National Pipe Thread by Barb, 316 SS | Female National Pipe Thread by Barb, Nickel plated |
| 1/16 FNPT by 3/64 Barb | FA-1F364B | FA-1F364B-NP | FA-1F364B-303 | FA-1F364B-SS | 1/16 FNPT by 3/64 Barb |
| 1/16 FNPT by 1/16 Barb | FA-1F1B | FA-1F1B-NP | FA-1F1B-303 | FA-1F1B-SS | 1/16 FNPT by 1/16 Barb |
| 1/16 FNPT by 5/32 Barb, 2MM | FA-1F564B | FA-1F564B-NP | FA-1F564B-303 | FA-1F564B-SS | 1/16 FNPT by 5/32 Barb, 2MM |
| 1/16 FNPT by 3/32 Barb | FA-1F332B | FA-1F332B-NP | FA-1F332B | FA-1F332B-SS | 1/16 FNPT by 3/32 Barb |
| 1/16 FNPT by 1/8 Barb | FA-1F2B | FA-1F2B-NP | FA-1F2B | FA-1F2B-SS | 1/16 FNPT by 1/8 Barb |
| 1/16 FNPT by 5/32 Barb, 4MM | FA-1F532B | FA-1F532B-NP | FA-1F532B | FA-1F532B-SS | 1/16 FNPT by 5/32 Barb, 4MM |
| 1/16 FNPT by .170 Barb | FA-1F170B | FA-1F170B-NP | FA-1F170B | FA-1F170B-SS | 1/16 FNPT by .170 Barb |
| 1/16 FNPT by 3/16 Barb | FA-1F3B | FA-1F3B-NP | FA-1F3B | FA-1F3B-SS | 1/16 FNPT by 3/16 Barb |
| 1/16 FNPT by 7/32 Barb | FA-1F732B | FA-1F732B-NP | FA-1F732B | FA-1F732B-SS | 1/16 FNPT by 7/32 Barb |

| Description | SKU | SKU | SKU | SKU | Description |
|--|------------|---------------|------------|---------------|--|
| 1/16 FNPT by 15/64 Barb, 6MM | FA-1F1564B | FA-1F1564B-NP | FA-1F1564B | FA-1F1564B-SS | 1/16 FNPT by 15/64 Barb, 6MM |
| 1/16 FNPT by 1/4 Barb | FA-1F4B | FA-1F4B-NP | FA-1F4B | FA-1F4B-SS | 1/16 FNPT by 1/4 Barb |
| 1/16 FNPT by 5/16 Barb, 8MM | FA-1F516B | FA-1F516B-NP | FA-1F516B | FA-1F516B | 1/16 FNPT by 5/16 Barb, 8MM |
| 1/16 FNPT by 3/8 Barb | FA-1F6B | FA-1F6B-NP | FA-1F6B | FA-1F6B | 1/16 FNPT by 3/8 Barb |
| 1/8 inch FNPT by .Barb | FA-2F078B | FA-2F078B | FA-2F078B | FA-2F078B | 1/8 inch FNPT by .Barb |
| 1/8 FNPT by 3/64 Barb | FA-2F364B | FA-2F364B | FA-2F364B | FA-2F364B | 1/8 FNPT by 3/64 Barb |
| 1/8 inch FNPT by 1/16 Barb | FA-2F1B | FA-2F1B | FA-2F1B | FA-2F1B | 1/8 inch FNPT by 1/16 Barb |
| 1/8 FNPT by 5/64 Barb, 2MM | FA-2F564B | FA-2F564B | FA-2F564B | FA-2F564B | 1/8 FNPT by 5/64 Barb, 2MM |
| 1/8 inch FNPT by 3/32 inch Barb | FA-2F332B | FA-2F332B | FA-2F332B | FA-2F332B | 1/8 inch FNPT by 3/32 inch Barb |
| 1/8 inch FNPT by 1/8 Barb | FA-2F2B | FA-2F2B | FA-2F2B | FA-2F2B | 1/8 inch FNPT by 1/8 Barb |
| 1/8 inch FNPT by 5/32 inch Barb, 4MM | FA-2F532B | FA-2F532B | FA-2F532B | FA-2F532B | 1/8 inch FNPT by 5/32 inch Barb, 4MM |
| 1/8 inch FNPT by .170 Barb | FA-2F170B | FA-2F170B | FA-2F170B | FA-2F170B | 1/8 inch FNPT by .170 Barb |
| 1/8 inch FNPT by 3/16 inch Barb Brass | FA-2F3B | FA-2F3B | FA-2F3B | FA-2F3B | 1/8 inch FNPT by 3/16 inch Barb Brass |
| 1/8 inch FNPT by 7/32 Barb | FA-2F732B | FA-2F732B | FA-2F732B | FA-2F732B | 1/8 inch FNPT by 7/32 Barb |
| 1/8 FNPT by 15/64 Barb, 6MM | FA-2F1564B | FA-2F1564B | FA-2F1564B | FA-2F1564B | 1/8 FNPT by 15/64 Barb, 6MM |
| 1/8 inch FNPT by 1/4 Barb | FA-2F4B | FA-2F4B | FA-2F4B | FA-2F4B | 1/8 inch FNPT by 1/4 Barb |

| Description | SKU | SKU | SKU | SKU | Description |
|--|------------|------------|------------|------------|--|
| 1/8 inch FNPT by 5/16 Barb, 8MM | FA-2F5B | FA-2F5B | FA-2F5B | FA-2F5B | 1/8 inch FNPT by 5/16 Barb, 8MM |
| 1/8 inch FNPT by 3/8 Barb | FA-2F6B | FA-2F6B | FA-2F6B | FA-2F6B | 1/8 inch FNPT by 3/8 Barb |
| 1/4 FNPT by 3/64 Barb | FA-4F364B | FA-4F364B | FA-4F364B | FA-4F364B | 1/4 FNPT by 3/64 Barb |
| 1/4 inch FNPT by 1/16 Barb | FA-4F1B | FA-4F1B | FA-4F1B | FA-4F1B | 1/4 inch FNPT by 1/16 Barb |
| 1/4 inch FNPT by 5/64 Barb, 2MM | FA-4F564B | FA-4F564B | FA-4F564B | FA-4F564B | 1/4 inch FNPT by 5/64 Barb, 2MM |
| 1/4 inch FNPT by 1/8 Barb | FA-4F2B | FA-4F2B | FA-4F2B | FA-4F2B | 1/4 inch FNPT by 1/8 Barb |
| 1/4 FNPT by 5/32 Barb, 4MM | FA-4F532B | FA-4F532B | FA-4F532B | FA-4F532B | 1/4 FNPT by 5/32 Barb, 4MM |
| 1/4 inch FNPT by by .170 Barb | FA-4F170B | FA-4F170B | FA-4F170B | FA-4F170B | 1/4 inch FNPT by by .170 Barb |
| 1/4 inch FNPT by 3/16 Barb | FA-4F3B | FA-4F3B | FA-4F3B | FA-4F3B | 1/4 inch FNPT by 3/16 Barb |
| 1/4 inch FNPT by 7/32 Barb | FA-4F732B | FA-4F732B | FA-4F732B | FA-4F732B | 1/4 inch FNPT by 7/32 Barb |
| 1/4 FNPT by 15/64 Barb, 6MM | FA-4F1564B | FA-4F1564B | FA-4F1564B | FA-4F1564B | 1/4 FNPT by 15/64 Barb, 6MM |
| 1/4 inch FNPT by 1/4 Barb | FA-4F4B | FA-4F4B | FA-4F4B | FA-4F4B | 1/4 inch FNPT by 1/4 Barb |
| 1/4 FNPT by 5/16 Barb, 8MM | FA-4F5B | FA-4F5B | FA-4F5B | FA-4F5B | 1/4 FNPT by 5/16 Barb, 8MM |
| 1/4 inch FNPT by 3/8 Barb | FA-4F6B | FA-4F6B | FA-4F6B | FA-4F6B | 1/4 inch FNPT by 3/8 Barb |
| 3/8 FNPT by 3/64 Barb | FA-6F364B | FA-6F364B | FA-6F364B | FA-6F364B | 3/8 FNPT by 3/64 Barb |
| 3/8 inch FNPT by 1/16 Barb | FA-6F1B | FA-6F1B | FA-6F1B | FA-6F1B | 3/8 inch FNPT by 1/16 Barb |

| Description | SKU | SKU | SKU | SKU | Description |
|--|----------------|----------------|----------------|----------------|--|
| 3/8 inch FNPT by 5/64 Barb, 2MM | FA-6F564B | FA-6F564B | FA-6F564B | FA-6F564B | 3/8 inch FNPT by 5/64 Barb, 2MM |
| 3/8 inch FNPT by 3/32 Barb | FA-6F332B | FA-6F332B | FA-6F332B | FA-6F332B | 3/8 inch FNPT by 3/32 Barb |
| 3/8 inch FNPT by 1/8 Barb | FA-6F2B | FA-6F2B | FA-6F2B | FA-6F2B | 3/8 inch FNPT by 1/8 Barb |
| 3/8 inch FNPT by 5/32 Barb, 4MM | FA-6F532B | FA-6F532B | FA-6F532B | FA-6F532B | 3/8 inch FNPT by 5/32 Barb, 4MM |
| 3/8 inch FNPT by .170 Barb | FA-6F170B | FA-6F170B | FA-6F170B | FA-6F170B | 3/8 inch FNPT by .170 Barb |
| 3/8 inch FNPT by 3/16 Barb | FA-6F3B | FA-6F3B | FA-6F3B | FA-6F3B | 3/8 inch FNPT by 3/16 Barb |
| 3/8 FNPT by 7/32 Barb | FA-6F732B | FA-6F732B | FA-6F732B | FA-6F732B | 3/8 FNPT by 7/32 Barb |
| 3/8 FNPT by 15/64 Barb, 6MM | FA-6F1564B | FA-6F1564B | FA-6F1564B | FA-6F1564B | 3/8 FNPT by 15/64 Barb, 6MM |
| 3/8 inch FNPT by 1/4 Barb | FA-6F4B | FA-6F4B | FA-6F4B | FA-6F4B | 3/8 inch FNPT by 1/4 Barb |
| 3/8 inch FNPT by 5/16 Barb, 8MM | FA-6F5B | FA-6F5B | FA-6F5B | FA-6F5B | 3/8 inch FNPT by 5/16 Barb, 8MM |
| 3/8 FNPT by 3/8 Barb | FA-6F6B | FA-6F6B | FA-6F6B | FA-6F6B | 3/8 FNPT by 3/8 Barb |



MAE SERIES

MAE Series Brass Male Elbow Adapters Barb sizes range from 1/16 inch to 1/4 inch.

| SKU | Description |
|----------------|--|
| MAE-1M1B | 1/16 inch MNPT by 1/16 inch Barbed Adapter |
| MAE-1M2B | 1/16 inch MNPT by 1/8 inch Barbed Adapter |
| MAE-1M3B | 1/16 inch MNPT by 3/16 inch Barbed Adapter |
| MAE-1M564B | 1/16 inch MNPT by 5/64 inch Barbed Adapter |
| MAE-2M1B | 1/8 inch MNPT by 1/16 inch Barbed Adapter |
| MAE-2M2B | 1/8 inch MNPT by 1/8 inch Barbed Adapter |
| MAE-2M2B-N | 1/8 inch MNPT by 1/8 inch Barbed Adapter |
| MAE-2M3B | 1/8 inch MNPT by 3/16 inch Barbed Adapter |
| MAE-2M4B-2B | 1/8 inch MNPT by 1/4 inch Barb by 1/8 inch Barbed Adapter |
| MAE-2M4B-2B-NP | 1/8 inch MNPT by 1/4 inch Barb by 1/8 inch Barbed Adapter |
| MAE-2M564B | 1/8 inch MNPT by 5/64 inch Barbed Adapter |
| MAE-4M1B | 1/4 inch MNPT by 1/16 inch Barbed Adapter |
| MAE-4M1B2B | 1/4 inch MNPT by 1/16 inch Barb by 1/8 inch Barbed Adapter |
| MAE-4M2B | 1/4 inch MNPT by 1/8 inch Barbed Adapter |
| MAE-4M2B1B | 1/4 inch MNPT by 1/8 inch Barb by 1/16 inch Barbed Adapter |
| MAE-4M332B | 1/4 inch MNPT by 3/32 inch Barbed Adapter |
| MAE-4M3B | 1/4 inch MNPT by 3/16 inch Barbed Adapter |
| MAE-4M564B | 1/4 inch MNPT by 5/64 inch Barbed Adapter |

MAT SERIES



MAT Series are Brass male Tee adapters with bite-style barb sizes ranging from 1/16 inch to 1/4 inch. Any different barb size can fit on any different hex.

| SKU | Description |
|--------------|---|
| MAT-2M078B | 1/8 inch MNPT by .078 inch Barb Brass Tee Adapter |
| MAT-2M1B | 1/8 inch MNPT by 1/16 inch Barb Brass Tee Adapter |
| MAT-2M2B | 1/8 inch MNPT by 1/8 inch Barb Brass Tee Adapter |
| MAT-2M332B | 1/8 inch MNPT by 3/32 inch Barb Brass Tee Adapter |
| MAT-2M3B | 1/8 inch MNPT by 3/16 inch Barb Brass Tee Adapter |
| MAT-2M564B | 1/8 inch MNPT by 5/64 inch Barb Brass Tee Adapter |
| MAT-4M078B | 1/4 inch MNPT by .078 inch Barb Brass Tee Adapter |
| MAT-4M1B | 1/4 inch MNPT by 1/16 inch Barb Brass Tee Adapter |
| MAT-4M1B2B2B | 1/4 inch MNPT by 1/16 inch by 1/8 inch by 1/8 inch Barb Brass Tee Adapter |
| MAT-4M2B | 1/4 inch MNPT by 1/8 inch Barb Brass Tee Adapter |
| MAT-4M332B | 1/4 inch MNPT by 3/32 inch Barb Brass Tee Adapter |
| MAT-4M3B | 1/4 inch MNPT by 3/16 inch Barb Brass Tee Adapter |
| MAT-4M532B | 1/4 inch MNPT by 5/32 inch Barb Brass Tee Adapter |
| MAT-4M564B | 1/4 inch MNPT by 5/64 inch Barb Brass Tee Adapter |
| MAT-4M732B | 1/4 inch MNPT by 7/32 inch Barb Brass Tee Adapter |

MT SERIES



The MT Series are Brass male Tee adapters with bite-style barbs. Available male NPT thread sizes range from 1/16 inch to 1/4 inch and the available barb sizes range from 1/16 inch to 1/2 inch.

| SKU | Description |
|---------------|---|
| MT-1M078B | 1/16 inch MNPT by .078 inch Barb Adapter Tee |
| MT-1M170B | 1/16 inch MNPT by .170 Barb Adapter Tee |
| MT-1M1B | 1/16 inch MNPT by 1/16 inch Barb Adapter Tee |
| MT-1M2B | 1/16 inch MNPT by 1/8 inch Barb Adapter Tee |
| MT-1M332B | 1/16 inch MNPT by 3/32 inch Barb Adapter Tee |
| MT-1M3B | 1/16 inch MNPT by to 3/16 inch Barb Adapter Tee |
| MT-1M564B | 1/16 inch MNPT by 5/64 inch Barb Adapter Tee |
| MT-1M732B | 1/16 inch MNPT by 7/32 inch Barb Adapter Tee |
| MT-2M078B | 1/8 inch MNPT by .078 inch Barb Adapter Tee |
| MT-2M078B-120 | 1/8 inch MNPT by .078 inch Barb 120° Adapter Tee |
| MT-2M078B-60 | 1/8 inch MNPT by .078 inch Barb 60 Degree Adapter Tee |
| MT-2M170B | 1/8 inch MNPT by .170 inch Barb Adapter Tee |
| MT-2M1B | 1/8 inch MNPT by 1/16 inch Barb Adapter Tee |
| MT-2M1B-60 | 1/8 inch MNPT by 1/16 inch Barb 60 Degree Adapter Tee |
| MT-2M2B | 1/8 inch MNPT by 1/8 inch Barb Adapter Tee |
| MT-2M332B | 1/8 inch MNPT by 3/32 inch Barb Adapter Tee |
| MT-2M3B | 1/8 inch MNPT by 3/16 inch Barb Adapter Tee |
| MT-2M564B | 1/8 inch MNPT by 5/64 inch Barb Adapter Tee |
| MT-2M5B | 1/8 inch MNPT by 5/16 inch Barb Adapter Tee |
| MT-2M6B | 1/8 inch MNPT by 3/8 inch Barb Adapter Tee |
| MT-4M078B | 1/4 inch MNPT by .078 inch Barb Adapter Tee |
| MT-4M170B | 1/4 inch MNPT by 7/32 inch Barb Adapter Tee |
| MT-4M1B | 1/4 inch MNPT by 1/16 inch Barb Adapter Tee |
| MT-4M2B | 1/4 inch MNPT by 1/8 inch Barb Adapter Tee |
| MT-4M2B-60 | 1/4 inch MNPT by 1/8 inch Barb 60 Degree Adapter Tee |
| MT-4M332B | 1/4 inch MNPT by 3/32 inch Barb Adapter Tee |
| MT-4M3B | 1/4 inch MNPT by 3/16 inch Barb Adapter Tee |
| MT-4M4B | 1/4 inch MNPT by 1/4 inch Barb Adapter Tee |
| MT-4M532B | 1/4 inch MNPT by 5/32 inch Barb Adapter Tee |
| MT-4M564B | 1/4 inch MNPT by 5/64 inch Barb Adapter Tee |
| MT-4M6B | 1/4 inch MNPT by 3/8 inch Barb Adapter Tee |
| MT-4M732B | 1/4 inch MNPT by 7/32 inch Barb Adapter Tee |
| MT-4M732B-90 | 1/4 inch MNPT by 7/32 inch Barb 90 Degree Adapter Tee |

ME SERIES



ME Series Brass male Elbow adapters with bite-style barbs ranging from 1/16 inch to 1/2 inch at 90° and 45° angles.

| SKU | Description |
|---------------|--|
| ME-10MM516B | 10 by 1 MM by 5/16 inch Barb Brass Elbow Brass |
| ME-1M078B | 1/16 inch Male Brass Elbow by .078 Barb |
| ME-1M170B | 1/16 inch Male Brass Elbow by .170 Barb |
| ME-1M1B | 1/16 inch Male Brass Elbow by 1/16 inch Barb |
| ME-1M2B | 1/16 inch Male Brass Elbow by 1/8 inch Barb |
| ME-1M332B | 1/16 inch Male Brass Elbow to 3/32 inch Barb |
| ME-1M3B | 1/16 inch Male Brass Elbow by 3/16 inch Barb |
| ME-1M4B | 1/16 inch Male Brass Elbow by 1/4 inch Barb |
| ME-1M532B | 1/16 inch Male Brass Elbow by 5/32 inch Barb |
| ME-1M564B | 1/16 inch Male Brass Elbow by 5/64 inch Barb |
| ME-1M5B | 1/16 inch Male Brass Elbow by 5/16 inch Barb |
| ME-1M6B | 1/16 inch Male Brass Elbow by 3/8 inch Barb |
| ME-1M732B | 1/16 inch Male Brass Elbow by 7/32 inch Barb |
| ME-2M078B | 1/8 inch Male Brass Elbow by .078 Barb |
| ME-2M170B | 1/8 inch Male Brass Elbow to .170 Barb |
| ME-2M1B | 1/8 inch Male Brass Elbow by 1/16 inch Barb |
| ME-2M2B | 1/8 inch Male Brass Elbow by 1/8 inch Barb |
| ME-2M2B-Short | 1/8 inch Male Brass Elbow by 1/8 inch Barb Short Threads |
| ME-2M332B | 1/8 inch Male Brass Elbow by 3/32 inch Barb |
| ME-2M3B | 1/8 inch Male Brass Elbow to 3/16 inch Barb |
| ME-2M4B | 1/8 inch Male Brass Elbow by 1/4 inch Barb |
| ME-2M4BSH | 1/8 inch Male Brass Elbow to 1/4 inch Barb Short |
| ME-2M532B | 1/8 inch Male Brass Elbow by 5/32 inch Barb |
| ME-2M564B | 1/8 inch Male Brass Elbow by 5/64 inch Barb |
| ME-2M5B | 1/8 inch Male Brass Elbow to 5/16 inch Barb |
| ME-2M6B | 1/8 inch Male Brass Elbow to 3/8 inch Barb |
| ME-2M732B | 1/8 inch Male Brass Elbow by 7/32 inch Barb |
| ME3-078B | M3 Metric Brass Elbow .078 |
| ME3-1B | M3 Metric Brass Elbow 1/16 inch |
| ME3-2B | M3 Metric Brass Elbow 1/8 inch |
| ME3-332B | M3 Metric Brass Elbow 3/32 inch |
| ME-4M078B | 1/4 inch Male Brass Elbow to .078 Barb |

| SKU | Description |
|---------------|--|
| ME-4M170B | 1/4 inch Male Brass Elbow to .170 Barb |
| ME-4M1B | 1/4 inch Male Brass Elbow to 1/16 inch Barb |
| ME-4M2B | 1/4 inch Male Brass Elbow to 1/8 inch Barb |
| ME-4M2B-Short | 1/4 inch Male Brass Elbow to 1/8 inch Barb Short Threads |
| ME-4M2B-SW | 1/4 inch Male Brass Elbow to 1/8 inch Barb Swivel |
| ME-4M332B | 1/4 inch Male Brass Elbow to 3/32 inch Barb |
| ME-4M3B | 1/4 inch Male Brass Elbow to 3/16 inch Barb |
| ME-4M4B | 1/4 inch Male Brass Elbow to 1/4 inch Barb |
| ME-4M532B | 1/4 inch Male Brass Elbow by 5/32 inch Barb |
| ME-4M564B | 1/4 inch Male Brass Elbow by 5/64 inch Barb |
| ME-4M5B | 1/4 inch Male Brass Elbow to 5/16 inch Barb |
| ME-4M6B | 1/4 inch Male Brass Elbow to 3/8 inch Barb |
| ME-4M732B | 1/4 inch Male Brass Elbow by 7/32 inch Barb |
| ME-4M8B | 1/4 inch Male Brass Elbow to 1/2 inch Barb |
| ME-6M170B | 3/8 inch Male Brass Elbow by .170 Barb |
| ME-6M1B | 3/8 inch Male Brass Elbow by 1/16 inch Barb |
| ME-6M2B | 3/8 inch Male Brass Elbow by 1/8 inch Barb |
| ME-6M2B-SH | 3/8 inch Male Brass Elbow to 1/8 inch Barb Short |
| ME-6M332B | 3/8 inch Male Brass Elbow by 3/32 inch Barb |
| ME-6M3B | 3/8 inch Male Brass Elbow by 3/16 inch Barb |
| ME-6M4B | 3/8 inch Male Brass Elbow by 1/4 inch Barb |
| ME-6M532B | 3/8 inch Male Brass Elbow by 5/32 inch Barb |
| ME-6M564B | 3/8 inch Male Brass Elbow by 5/64 inch Barb |
| ME-6M5B | 3/8 inch Male Brass Elbow by 5/16 inch Barb |
| ME-6M6B | 3/8 inch Male Brass Elbow by 3/8 inch Barb |
| ME-6M732B | 3/8 inch Male Brass Elbow by 7/32 inch Barb |
| ME-8M170B | 1/2 inch Male Brass Elbow by .170 Barb |
| ME-8M1B | 1/2 inch Male Brass Elbow by 1/16 inch Barb |
| ME-8M2B | 1/2 inch Male Brass Elbow by 1/8 inch Barb |
| ME-8M332B | 1/2 inch Male Brass Elbow by 3/32 inch Barb |
| ME-8M3B | 1/2 inch Male Brass Elbow by 3/16 inch Barb |
| ME-8M4B | 1/2 inch Male Brass Elbow by 1/4 inch Barb |
| ME-8M532B | 1/2 inch Male Brass Elbow by 5/32 inch Barb |
| ME-8M564B | 1/2 inch Male Brass Elbow by 5/64 inch Barb |
| ME-8M5B | 1/2 inch Male Brass Elbow by 5/16 inch Barb |
| ME-8M6B | 1/2 inch Male Brass Elbow by 3/8 inch Barb |
| ME-8M732B | 1/2 inch Male Brass Elbow by 7/32 inch Barb |
| ME45-10M1B | 10-32 by 1/16 inch Barb 45° Brass Elbow |
| ME45-10M332B | 10-32 by 3/32 inch Barb 45° Brass Elbow |
| ME45-10M564B | 10-32 by 5/64 inch Barb 45° Brass Elbow |
| ME45-14M170B | 1/4-28 by .170 Barb 45° Brass Elbow |
| ME45-14M1B | 1/4-28 by 1/16 inch Barb 45° Brass Elbow |
| ME45-14M2B | 1/4-28 by 1/8 inch Barb 45° Brass Elbow |

| SKU | Description |
|--------------|---|
| ME45-14M332B | 1/4-28 by 3/32 inch Barb 45° Brass Elbow |
| ME45-14M3B | 1/4-28 by 3/16 inch Barb 45° Brass Elbow |
| ME45-14M4B | 1/4-28 by 1/4 inch Barb 45° Brass Elbow |
| ME45-14M532B | 1/4-28 by 5/32 inch Barb 45° Brass Elbow |
| ME45-14M564B | 1/4-28 by 5/64 inch Barb 45° Brass Elbow |
| ME45-14M732B | 1/4-28 by 7/32 inch Barb 45° Brass Elbow |
| ME45-1M170B | 1/16 inch by .170 Barb 45° Brass Elbow |
| ME45-1M1B | 1/16 inch by 1/16 inch Barb 45° Brass Elbow |
| ME45-1M2B | 1/16 inch by 1/8 inch Barb 45° Brass Elbow |
| ME45-1M332B | 1/16 inch by 3/32 inch Barb 45° Brass Elbow |
| ME45-1M3B | 1/16 inch by 3/16 inch Barb 45° Brass Elbow |
| ME45-1M4B | 1/16 inch by 1/4 inch Barb 45° Brass Elbow |
| ME45-1M532B | 1/16 inch by 5/32 inch Barb 45° Brass Elbow |
| ME45-1M564B | 1/16 inch by 5/64 inch Barb 45° Brass Elbow |
| ME45-1M732B | 1/16 inch by 7/32 inch Barb 45° Brass Elbow |
| ME45-2M170B | 1/8 inch by .170 Barb 45° Brass Elbow |
| ME45-2M1B | 1/8 inch by 1/16 inch Barb 45° Brass Elbow |
| ME45-2M2B | 1/8 inch by 1/8 inch Barb 45° Brass Elbow |
| ME45-2M332B | 1/8 inch by 3/32 inch Barb 45° Brass Elbow |
| ME45-2M3B | 1/8 inch by 3/16 inch Barb 45° Brass Elbow |
| ME45-2M4B | 1/8 inch by 1/4 inch Barb 45° Brass Elbow |
| ME45-2M532B | 1/8 inch by 5/32 inch Barb 45° Brass Elbow |
| ME45-2M564B | 1/8 inch by 5/64 inch Barb 45° Brass Elbow |
| ME45-2M5B | 1/8 inch by 5/16 inch Barb 45° Brass Elbow |
| ME45-2M6B | 1/8 inch by 3/8 inch Barb 45° Brass Elbow |
| ME45-2M732B | 1/8 inch by 7/32 inch Barb 45° Brass Elbow |
| ME45-2M8B | 1/8 inch by 1/2 inch Barb 45° Brass Elbow |
| ME45-4M170B | 1/4 inch by .170 Barb 45° Brass Elbow |
| ME45-4M1B | 1/4 inch by 1/16 inch Barb 45° Brass Elbow |
| ME45-4M2B | 1/4 inch by 1/8 inch Barb 45° Brass Elbow |
| ME45-4M332B | 1/4 inch by 3/32 inch Barb 45° Brass Elbow |
| ME45-4M3B | 1/4 inch by 3/16 inch Barb 45° Brass Elbow |
| ME45-4M4B | 1/4 inch by 1/4 inch Barb 45° Brass Elbow |
| ME45-4M532B | 1/4 inch by 5/32 inch Barb 45° Brass Elbow |
| ME45-4M564B | 1/4 inch by 5/64 inch Barb 45° Brass Elbow |
| ME45-4M5B | 1/4 inch by 5/16 inch Barb 45° Brass Elbow |
| ME45-4M6B | 1/4 inch by 3/8 inch Barb 45° Brass Elbow |
| ME45-4M732B | 1/4 inch by 7/32 inch Barb 45° Brass Elbow |
| ME45-4M8B | 1/4 inch by 1/2 inch Barb 45° Brass Elbow |
| ME45-6M170B | 3/8 inch by .170 Barb 45° Brass Elbow |
| ME45-6M1B | 3/8 inch by 1/16 inch Barb 45° Brass Elbow |
| ME45-6M2B | 3/8 inch by 1/8 inch Barb 45° Brass Elbow |
| ME45-6M332B | 3/8 inch by 3/32 inch Barb 45° Brass Elbow |

| SKU | Description |
|-------------|--|
| ME45-6M3B | 3/8 inch by 3/16 inch Barb 45° Brass Elbow |
| ME45-6M4B | 3/8 inch by 1/4 inch Barb 45° Brass Elbow |
| ME45-6M532B | 3/8 inch by 5/32 inch Barb 45° Brass Elbow |
| ME45-6M564B | 3/8 inch by 5/64 inch Barb 45° Brass Elbow |
| ME45-6M5B | 3/8 inch by 5/16 inch Barb 45° Brass Elbow |
| ME45-6M6B | 3/8 inch by 3/8 inch Barb 45° Brass Elbow |
| ME45-6M732B | 3/8 inch by 7/32 inch Barb 45° Brass Elbow |
| ME45-6M8B | 3/8 inch by 1/2 inch Barb 45° Brass Elbow |

FEU SERIES



The FEU Series is a Brass female UNF thread to bite-style barb elbow. The bite-style barb holds the tubing securely so it will not pull off. Also available in nickel-plated Brass and 303 Stainless Steel.

| SKU | Description |
|--------------|--|
| FEU-10X078B | 10-32 inch Female UNF by .078 inch Brass Adapter |
| FEU-10X170B | 10-32 inch Female UNF by .170 inch Brass Adapter |
| FEU-10X1B | 10-32 inch Female UNF by 1/16 inch Brass Adapter |
| FEU-10X2B | 10-32 inch Female UNF by 1/8 inch Brass Adapter |
| FEU-10X332B | 10-32 inch Female UNF by 3/32 inch Brass Adapter |
| FEU-10X532B | 10-32 inch Female UNF by 5/32 inch Brass Adapter |
| FEU-10X564BB | 10-32 inch Female UNF by 5/64 inch Brass Adapter |

MEV SERIES



The MEV Series are brass MNPT thread with bite-style barbs at 60 degree to the flats. These elbows come in 3 different sizes of the angle between elbows – 60°, 90° and 120°. This series comes in MNPT thread sizes ranging from 1/8 inch to 3/8 inch and barb sizes ranging from 1/16 inch to 1/2 inch. Also available in Nickel-Plated Brass and 303 Stainless Steel.

| SKU | Description |
|--------------|---|
| MEV60-2M1B | 1/8 inch MNPT by 1/16 inch Barb 60° Brass Elbow |
| MEV60-2M2B | 1/8 inch MNPT by 1/8 inch Barb 60° Brass Elbow |
| MEV60-2M332B | 1/8 inch MNPT by 3/32 inch Barb 60° Brass Elbow |
| MEV60-2M3B | 1/8 inch MNPT by 3/16 inch Barb 60° Brass Elbow |
| MEV60-2M4B | 1/8 inch MNPT by 1/4 inch Barb 60° Brass Elbow |
| MEV60-2M532B | 1/8 inch MNPT by 5/32 inch Barb 60° Brass Elbow |
| MEV60-2M564B | 1/8 inch MNPT by 5/64 inch Barb 60° Brass Elbow |
| MEV60-2M5B | 1/8 inch MNPT by 5/16 inch Barb 60° Brass Elbow |
| MEV60-2M6B | 1/8 inch MNPT by 3/8 inch Barb 60° Brass Elbow |
| MEV60-2M732B | 1/8 inch MNPT by 7/32 inch Barb 60° Brass Elbow |
| MEV60-2M8B | 1/8 inch MNPT by 1/2 inch Barb 60° Brass Elbow |
| MEV60-4M170B | 1/4 inch MNPT by .170 inch Barb 60° Brass Elbow |
| MEV60-4M1B | 1/4 inch MNPT by 1/16 inch Barb 60° Brass Elbow |
| MEV60-4M2B | 1/4 inch MNPT by 1/8 inch Barb 60° Brass Elbow |
| MEV60-4M332B | 1/4 inch MNPT by 3/32 inch Barb 60° Brass Elbow |
| MEV60-4M3B | 1/4 inch MNPT by 3/16 inch Barb 60° Brass Elbow |
| MEV60-4M4B | 1/4 inch MNPT by 1/4 inch Barb 60° Brass Elbow |
| MEV60-4M532B | 1/4 inch MNPT by 5/32 inch Barb 60° Brass Elbow |
| MEV60-4M564B | 1/4 inch MNPT by 5/64 inch Barb 60° Brass Elbow |
| MEV60-4M5B | 1/4 inch MNPT by 5/16 inch Barb 60° Brass Elbow |
| MEV60-4M6B | 1/4 inch MNPT by 3/8 inch Barb 60° Brass Elbow |
| MEV60-4M732B | 1/4 inch MNPT by 7/32 inch Barb 60° Brass Elbow |
| MEV60-4M8B | 1/4 inch MNPT by 1/2 inch Barb 60° Brass Elbow |
| MEV60-6M170B | 3/8 inch MNPT by .170 Barb 60° Brass Elbow |
| MEV60-6M1B | 3/8 inch MNPT by 1/16 inch Barb 60° Brass Elbow |
| MEV60-6M2B | 3/8 inch MNPT by 1/8 inch Barb 60° Brass Elbow |
| MEV60-6M332B | 3/8 inch MNPT by 3/32 inch Barb 60° Brass Elbow |
| MEV60-6M3B | 3/8 inch MNPT by 3/16 inch Barb 60° Brass Elbow |
| MEV60-6M4B | 3/8 inch MNPT by 1/4 inch Barb 60° Brass Elbow |
| MEV60-6M532B | 3/8 inch MNPT by 5/32 inch Barb 60° Brass Elbow |
| MEV60-6M564B | 3/8 inch MNPT by 5/64 inch Barb 60° Brass Elbow |

| SKU | Description |
|---------------|--|
| MEV60-6M5B | 3/8 inch MNPT by 5/16 inch Barb 60° Brass Elbow |
| MEV60-6M6B | 3/8 inch MNPT by 3/8 inch Barb 60° Brass Elbow |
| MEV60-6M732B | 3/8 inch MNPT by 7/32 inch Barb 60° Brass Elbow |
| MEV60-6M8B | 3/8 inch MNPT by 1/2 inch Barb 60° Brass Elbow |
| MEV90-2M170B | 1/8 inch MNPT by .170 Barb 90° Brass Elbow |
| MEV90-2M1B | 1/8 inch MNPT by 1/16 inch Barb 90° Brass Elbow |
| MEV90-2M2B | 1/8 inch MNPT by 1/8 inch Barb 90° Brass Elbow |
| MEV90-2M332B | 1/8 inch MNPT by 3/32 inch Barb 90° Brass Elbow |
| MEV90-2M3B | 1/8 inch MNPT by 3/16 inch Barb 90° Brass Elbow |
| MEV90-2M4B | 1/8 inch MNPT by 1/4 inch Barb 90° Brass Elbow |
| MEV90-2M532B | 1/8 inch MNPT by 5/32 inch Barb 90° Brass Elbow |
| MEV90-2M564B | 1/8 inch MNPT by 5/16 inch Barb 90° Brass Elbow |
| MEV90-2M5B | 1/8 inch MNPT by 5/64 inch Barb 90° Brass Elbow |
| MEV90-2M6B | 1/8 inch MNPT by 3/8 inch Barb 90° Brass Elbow |
| MEV90-2M732B | 1/8 inch MNPT by 7/32 inch Barb 90° Brass Elbow |
| MEV90-2M8B | 1/8 inch MNPT by 1/2 inch Barb 90° Brass Elbow |
| MEV90-4M170B | 1/4 inch MNPT by .170 inch Barb 90° Brass Elbow |
| MEV90-4M1B | 1/4 inch MNPT by 1/16 inch Barb 90° Brass Elbow |
| MEV90-4M2B | 1/4 inch MNPT by 1/8 inch Barb 90° Brass Elbow |
| MEV90-4M332B | 1/4 inch MNPT by 3/32 inch Barb 90° Brass Elbow |
| MEV90-4M3B | 1/4 inch MNPT by 3/16 inch Barb 90° Brass Elbow |
| MEV90-4M4B | 1/4 inch MNPT by 1/4 inch Barb 90° Brass Elbow |
| MEV90-4M532B | 1/4 inch MNPT by 5/32 inch Barb 90° Brass Elbow |
| MEV90-4M564B | 1/4 inch MNPT by 5/64 inch Barb 90° Brass Elbow |
| MEV90-4M5B | 1/4 inch MNPT by 5/16 inch Barb 90° Brass Elbow |
| MEV90-4M6B | 1/4 inch MNPT by 3/8 inch Barb 90° Brass Elbow |
| MEV90-4M732B | 1/4 inch MNPT by 7/32 inch Barb 90° Brass Elbow |
| MEV90-4M8B | 1/4 inch MNPT by 1/2 inch Barb 90° Brass Elbow |
| MEV90-6M170B | 3/8 inch MNPT by .170 Barb 90° Brass Elbow |
| MEV90-6M1B | 3/8 inch MNPT by 1/16 inch Barb 90° Brass Elbow |
| MEV90-6M2B | 3/8 inch MNPT by 1/8 inch Barb 90° Brass Elbow |
| MEV90-6M332B | 3/8 inch MNPT by 3/32 inch Barb 90° Brass Elbow |
| MEV90-6M3B | 3/8 inch MNPT by 3/16 inch Barb 90° Brass Elbow |
| MEV90-6M4B | 3/8 inch MNPT by 1/4 inch Barb 90° Brass Elbow |
| MEV90-6M532B | 3/8 inch MNPT by 5/32 inch Barb 90° Brass Elbow |
| MEV90-6M564B | 3/8 inch MNPT by 5/64 inch Barb 90° Brass Elbow |
| MEV90-6M5B | 3/8 inch MNPT by 5/16 inch Barb 90° Brass Elbow |
| MEV90-6M6B | 3/8 inch MNPT by 3/8 inch Barb 90° Brass Elbow |
| MEV90-6M732B | 3/8 inch MNPT by 7/32 inch Barb 90° Brass Elbow |
| MEV90-6M8B | 3/8 inch MNPT by 1/2 inch Barb 90° Brass Elbow |
| MEV120-2M170B | 1/8 inch MNPT by .170 inch Barb 120° Brass Elbow |
| MEV120-2M1B | 1/8 inch MNPT by 1/16 inch Barb 120° Brass Elbow |
| MEV120-2M2B | 1/8 inch MNPT by 1/8 inch Barb 120° Brass Elbow |

| SKU | Description |
|---------------|--|
| MEV120-2M332B | 1/8 inch MNPT by 3/32 inch Barb 120° Brass Elbow |
| MEV120-2M3B | 1/8 inch MNPT by 3/16 inch Barb 120° Brass Elbow |
| MEV120-2M4B | 1/8 inch MNPT by 1/4 inch Barb 120° Brass Elbow |
| MEV120-2M532B | 1/8 inch MNPT by 5/32 inch Barb 120° Brass Elbow |
| MEV120-2M564B | 1/8 inch MNPT by 5/64 inch Barb 120° Brass Elbow |
| MEV120-2M5B | 1/8 inch MNPT by 5/16 inch Barb 120° Brass Elbow |
| MEV120-2M6B | 1/8 inch MNPT by 3/8 inch Barb 120° Brass Elbow |
| MEV120-2M732B | 1/8 inch MNPT by 7/32 inch Barb 120° Brass Elbow |
| MEV120-2M8B | 1/8 inch MNPT by 1/2 inch Barb 120° Brass Elbow |
| MEV120-4M170B | 1/4 inch MNPT by .170 inch Barb 120° Brass Elbow |
| MEV120-4M1B | 1/4 inch MNPT by 1/16 inch Barb 120° Brass Elbow |
| MEV120-4M2B | 1/4 inch MNPT by 1/8 inch Barb 120° Brass Elbow |
| MEV120-4M332B | 1/4 inch MNPT by 3/32 inch Barb 120° Brass Elbow |
| MEV120-4M3B | 1/4 inch MNPT by 3/16 inch Barb 120° Brass Elbow |
| MEV120-4M4B | 1/4 inch MNPT by 1/4 inch Barb 120° Brass Elbow |
| MEV120-4M532B | 1/4 inch MNPT by 5/32 inch Barb 120° Brass Elbow |
| MEV120-4M564B | 1/4 inch MNPT by 5/64 inch Barb 120° Brass Elbow |
| MEV120-4M5B | 1/4 inch MNPT by 5/16 inch Barb 120° Brass Elbow |
| MEV120-4M6B | 1/4 inch MNPT by 3/8 inch Barb 120° Brass Elbow |
| MEV120-4M732B | 1/4 inch MNPT by 7/32 inch Barb 120° Brass Elbow |
| MEV120-4M8B | 1/4 inch MNPT by 1/2 inch Barb 120° Brass Elbow |
| MEV120-6M170B | 3/8 inch MNPT by .170 inch Barb 120° Brass Elbow |
| MEV120-6M1B | 3/8 inch MNPT by 1/16 inch Barb 120° Brass Elbow |
| MEV120-6M2B | 3/8 inch MNPT by 1/8 inch Barb 120° Brass Elbow |
| MEV120-6M332B | 3/8 inch MNPT by 3/32 inch Barb 120° Brass Elbow |
| MEV120-6M3B | 3/8 inch MNPT by 3/16 inch Barb 120° Brass Elbow |
| MEV120-6M4B | 3/8 inch MNPT by 1/4 inch Barb 120° Brass Elbow |
| MEV120-6M532B | 3/8 inch MNPT by 5/32 inch Barb 120° Brass Elbow |
| MEV120-6M564B | 3/8 inch MNPT by 5/64 inch Barb 120° Brass Elbow |
| MEV120-6M5B | 3/8 inch MNPT by 5/16 inch Barb 120° Brass Elbow |
| MEV120-6M6B | 3/8 inch MNPT by 3/8 inch Barb 120° Brass Elbow |
| MEV120-6M732B | 3/8 inch MNPT by 7/32 inch Barb 120° Brass Elbow |
| MEV120-6M8B | 3/8 inch MNPT by 1/2 inch Barb 120° Brass Elbow |

DFA SERIES



The DFA Series is a Brass female NPT threads-to-bite-style barb adapter. Available in sizes ranging from 1/8 inch to 1/2 inch. This fitting has excellent vibration resistance and requires no clamp. The maximum working pressure is 150 psi and the temperature range is -65° F to 90° F. This fitting can be used in humidifiers, pneumatic systems, and filters.

| SKU | Description |
|-----------|--|
| DFA-18170 | 1/8 inch FNPT by .170 ID Brass Female Adapter |
| DFA-18250 | 1/8 inch FNPT by .250 ID Brass Female Adapter |
| DFA-18332 | 1/8 inch FNPT by 3/32 inch ID Brass Female Adapter |

AFH SERIES



The AFH Series Plastic Female NPT to Multi-Barbed Adapter Fittings are available in Nylon, Black Polypropylene, or PTFE materials in sizes ranging from 1/4 inch to 3/4 inch Barbs.

| SKU | Description |
|-----------------|--|
| AFH-12F10B-BPP | 3/4 inch FNPT to 5/8 inch Barbed Adapter Black Polypropylene |
| AFH-12F10B-NN | 3/4 inch FNPT to 5/8 inch Barbed Adapter Natural Nylon |
| AFH-12F10B-PTFE | 3/4 inch FNPT to 5/8 inch Barbed Adapter Polytetrafluoroethylene |
| AFH-12F12B-BPP | 3/4 inch FNPT to 3/4 inch Barbed Adapter Black Polypropylene |
| AFH-12F12B-NN | 3/4 inch FNPT to 3/4 inch Barbed Adapter Natural Nylon |
| AFH-12F12B-PTFE | 3/4 inch FNPT to 3/4 inch Barbed Adapter Polytetrafluoroethylene |
| AFH-12F4B-BPP | 3/4 inch FNPT to 1/4 inch Barbed Adapter Black Polypropylene |
| AFH-12F4B-NN | 3/4 inch FNPT to 1/4 inch Barbed Adapter Natural Nylon |
| AFH-12F4B-PTFE | 3/4 inch FNPT to 1/4 inch Barbed Adapter Polytetrafluoroethylene |
| AFH-12F6B-BKPP | 3/4 inch FNPT to 3/8 inch Barbed Adapter Black Polypropylene |
| AFH-12F6B-NN | 3/4 inch FNPT to 3/8 inch Barbed Adapter Natural Nylon |
| AFH-12F6B-PTFE | 3/4 inch FNPT to 3/8 inch Barbed Adapter Polytetrafluoroethylene |
| AFH-12F8B-BPP | 3/4 inch FNPT to 1/2 inch Barbed Adapter Black Polypropylene |
| AFH-12F8B-NN | 3/4 inch FNPT to 1/2 inch Barbed Adapter Natural Nylon |
| AFH-12F8B-PTFE | 3/4 inch FNPT to 1/2 inch Barbed Adapter Polytetrafluoroethylene |

| SKU | Description |
|----------------|--|
| AFH-2F4B-BPP | 1/8 inch FNPT to 1/4 inch Barbed Adapter Black Polypropylene |
| AFH-2F4B-NN | 1/8 inch FNPT to 1/4 inch Barbed Adapter Natural Nylon |
| AFH-2F4B-PTFE | 1/8 inch FNPT to 1/4 inch Barbed Adapter Polytetrafluoroethylene |
| AFH-2F6B-BPP | 1/8 inch FNPT to 3/8 inch Barbed Adapter Black Polypropylene |
| AFH-2F6B-NN | 1/8 inch FNPT to 3/8 inch Barbed Adapter Natural Nylon |
| AFH-2F6B-PTFE | 1/8 inch FNPT to 3/8 inch Barbed Adapter Polytetrafluoroethylene |
| AFH-4F4B-BPP | 1/4 inch FNPT to 1/4 inch Barbed Adapter Black Polypropylene |
| AFH-4F4B-NN | 1/4 inch FNPT to 1/4 inch Barbed Adapter Natural Nylon |
| AFH-4F4B-PTFE | 1/4 inch FNPT to 1/4 inch Barbed Adapter Polytetrafluoroethylene |
| AFH-4F6B-BPP | 1/4 inch FNPT to 3/8 inch Barbed Adapter Black Polypropylene |
| AFH-4F6B-NN | 1/4 inch FNPT to 3/8 inch Barbed Adapter Natural Nylon |
| AFH-4F6B-PTFE | 1/4 inch FNPT to 3/8 inch Barbed Adapter Polytetrafluoroethylene |
| AFH-4F8B-BPP | 1/4 inch FNPT to 1/2 inch Barbed Adapter Black Polypropylene |
| AFH-4F8B-NN | 1/4 inch FNPT to 1/2 inch Barbed Adapter Natural Nylon |
| AFH-4F8B-PTFE | 1/4 inch FNPT to 1/2 inch Barbed Adapter Polytetrafluoroethylene |
| AFH-6F10B-BPP | 3/8 inch FNPT to 5/8 inch Barbed Adapter Black Polypropylene |
| AFH-6F10B-NN | 3/8 inch FNPT to 5/8 inch Barbed Adapter Natural Nylon |
| AFH-6F10B-PTFE | 3/8 inch FNPT to 5/8 inch Barbed Adapter Polytetrafluoroethylene |
| AFH-6F12B-BPP | 3/8 inch FNPT to 3/4 inch Barbed Adapter Black Polypropylene |
| AFH-6F12B-NN | 3/8 inch FNPT to 3/4 inch Barbed Adapter Natural Nylon |
| AFH-6F12B-PTFE | 3/8 inch FNPT to 3/4 inch Barbed Adapter Polytetrafluoroethylene |
| AFH-6F4B-BPP | 3/8 inch FNPT to 1/4 inch Barbed Adapter Black Polypropylene |
| AFH-6F4B-NN | 3/8 inch FNPT to 1/4 inch Barbed Adapter Natural Nylon |
| AFH-6F4B-PTFE | 3/8 inch FNPT to 1/4 inch Barbed Adapter Polytetrafluoroethylene |
| AFH-6F6B-BPP | 3/8 inch FNPT to 3/8 inch Barbed Adapter Black Polypropylene |
| AFH-6F6B-NN | 3/8 inch FNPT to 3/8 inch Barbed Adapter Natural Nylon |
| AFH-6F6B-PTFE | 3/8 inch FNPT to 3/8 inch Barbed Adapter Polytetrafluoroethylene |
| AFH-6F8B-BPP | 3/8 inch FNPT to 1/2 inch Barbed Adapter Black Polypropylene |
| AFH-6F8B-NN | 3/8 inch FNPT to 1/2 inch Barbed Adapter Natural Nylon |
| AFH-6F8B-PTFE | 3/8 inch FNPT to 1/2 inch Barbed Adapter Polytetrafluoroethylene |
| AFH-8F10F-BPP | 1/2 inch FNPT to 5/8 inch Barbed Adapter Black Polypropylene |
| AFH-8F10F-NN | 1/2 inch FNPT to 5/8 inch Barbed Adapter Natural Nylon |
| AFH-8F10F-PTFE | 1/2 inch FNPT to 5/8 inch Barbed Adapter Polytetrafluoroethylene |
| AFH-8F12B-BPP | 1/2 inch FNPT to 3/4 inch Barbed Adapter Black Polypropylene |
| AFH-8F12B-NN | 1/2 inch FNPT to 3/4 inch Barbed Adapter Natural Nylon |
| AFH-8F12B-PTFE | 1/2 inch FNPT to 3/4 inch Barbed Adapter Polytetrafluoroethylene |
| AFH-8F4B-BPP | 1/2 inch FNPT to 1/4 inch Barbed Adapter Black Polypropylene |
| AFH-8F4B-NN | 1/2 inch FNPT to 1/4 inch Barbed Adapter Natural Nylon |
| AFH-8F4B-PTFE | 1/2 inch FNPT to 1/4 inch Barbed Adapter Polytetrafluoroethylene |
| AFH-8F6B-BPP | 1/2 inch FNPT to 3/8 inch Barbed Adapter Black Polypropylene |
| AFH-8F6B-NN | 1/2 inch FNPT to 3/8 inch Barbed Adapter Natural Nylon |
| AFH-8F6B-PTFE | 1/2 inch FNPT to 3/8 inch Barbed Adapter Polytetrafluoroethylene |
| AFH-8F8B-BPP | 1/2 inch FNPT to 1/2 inch Barbed Adapter Black Polypropylene |

| SKU | Description |
|---------------|--|
| AFH-8F8B-NN | 1/2 inch FNPT to 1/2 inch Barbed Adapter Natural Nylon |
| AFH-8F8B-PTFE | 1/2 inch FNPT to 1/2 inch Barbed Adapter Polytetrafluoroethylene |

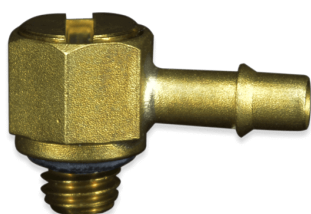
FPN SERIES



The FPN series is a plastic nut. This product can be made from either standard nylon or polypropylene. In addition the 3/4" NPT nut is intended for use with hose barb stems.

| SKU | Description |
|-----|-------------------|
| FPN | 3/4 FNPT Pipe Nut |

CAE SERIES



The CAE Series are Brass 10-32 inch UNF by bite-style single barb adjustable fitting with slotted adjustment flush to the surface. Elbow and Tee configurations. Also available in Nickel-Plated.

| SKU | Description |
|------------|--|
| CAE-10170B | 10-32 inch UNF by .170 inch Brass Adjustable Elbow |
| CAE-10X2B | 10-32 inch UNF by .170 inch Brass Adjustable Elbow |
| CAE-101B | 10-32 inch UNF by 1/16 inch Brass Adjustable Elbow |
| CAE-10332B | 10-32 inch UNF by 3/32 inch Brass Adjustable Elbow |
| CAE-102B | 10-32 inch UNF by 1/8 inch Brass Adjustable Elbow |
| CAE-10170B | 10-32 inch UNF by .170 inch Brass Adjustable Elbow |



SSBM SERIES

The SSBM Series Multi-Barbed Hose Splicer Fitting is made of 303 Stainless Steel and is available in straight barb sizes of 1/4 inch and 3/8 inch. The available reducing barb size is 3/8 inch by 1/4 inch.

| SKU | Description |
|-----------|--|
| SSBM-4B4B | 1/4 Barb by 1/4 Barb Stainless Steel Splicer |
| SSBM-6B6B | 3/8 Barb by 3/8 Barb Stainless Steel Splicer |
| SSBM-6B4B | 3/8 Barb by 1/4 Barb Stainless Steel Splicer Reducer |



DMA SERIES

The DMA Series a Brass male NPT thread to ID bite-style barb adapter that works well with Polyethylene tubing. This fitting has excellent vibration resistance and requires no clamp. The maximum working pressure is 150 psi and the temperature range is -65° F to 90° F. Available MNPT thread sizes are 1/16 inch, 1/8 inch, 3/8 inch, 1/4 inch, and 1/2 inch. ID sizes range from .170 inch to .375 inch.

| SKU | Description |
|-----------|---|
| DMA-10170 | 10-32 inch male UNF by .170 inch ID Brass Adapter |
| DMA-12375 | 1/2 inch MNPT by .375 inch ID Brass Adapter |
| DMA-14170 | 1/4 inch MNPT by 7/32 inch ID Brass Adapter |
| DMA-14375 | 1/4 inch MNPT by .375 inch ID Brass Adapter |
| DMA-16170 | 1/16 inch MNPT by .170 inch ID Brass Adapter |
| DMA-1618 | 1/16 inch MNPT by .250 inch ID Brass Adapter |
| DMA-18170 | 1/8 inch MNPT by .170 inch ID Brass Adapter |
| DMA-18250 | 1/8 inch MNPT by .250 inch ID Brass Adapter |
| DMA-18332 | 1/8 inch MNPT by 3/32 inch ID Brass Adapter |
| DMA-38375 | 3/8 inch MNPT by .375 inch ID Brass Adapter |

SMRI SERIES



The SMRI Series Barbed Nickel-Plated Brass Quick Connect Plugs resist corrosion, have a maximum input pressure of 500 psi, a temperature range of -4° F to 210° F, and are designed to fit with the **SMRC Series** Quick Coupler bodies.

| SKU | Description |
|------------|------------------------------|
| SMRI-3B | 3/16 inch Barbed Brass Plug |
| SMRI-532B | 5/32 inch Barbed Brass Plug |
| SMRI-1032F | 10-32 inch Female Brass Plug |
| SMRI-1032M | 10-32 inch Male Brass Plug |
| SMRI-18B | 1/8 inch Barbed Brass Plug |

VNAT SERIES



Nickel Plated Panel Mount Needle Valve with a 3° pin angle, 64 TPI for fine adjustment. Buna-N seal standard and it has a screwdriver slot for easy adjustment. Operating temperature -40° F to 200° F. The recommended filtration is 5 microns. Barbed fittings for flexible tubing.

| SKU | Description |
|--------------|---|
| VNAT-16 | 1/16 inch Barbed Needle Valve |
| VNAT-18 | 1/8 inch Barbed Needle Valve |
| VNAT-1B-K-PM | 1/16 inch Barbed NPB KNOB PM Needle Valve |
| VNAT-1B-S-PM | 1/16 inch Barbed NPB Slotted with PM Needle Valve |
| VNAT-2B-K-PM | 1/8 inch Barbed NPB KNOB with PM Needle Valve |



BBM SERIES

The BBM Series multi-barbed Brass Bulkheads were a special order made for Pneuline Supply Inc. These bulkheads have 7/16-24 UNS threads for mounting. The multi-barb sizes are 1/4 inch by 1/4 inch, 1/4 inch by 3/8 inch, and 3/8 inch by 3/8 inch.

| SKU | Description |
|----------|---|
| BBM-4B | 1/4 inch 7/16-24 Multi-Barbed Brass Bulkhead |
| BBM-4B6B | 1/4 inch 7/16-24 3/8 inch Multi-Barbed Brass Bulkhead |
| BBM-6B | 3/8 inch 7/16-24 Multi-Barbed Brass Bulkhead |



EBHF SERIES

The EBHF Series is a tank flange 90° elbow Bulkhead. This series is available in Aluminum, Brass, and Stainless Steel. Female NPT thread sizes for this series are 1/4 inch, 3/8 inch, and 1/2 inch. Barb sizes for this series are 5/16 inch and 3/8 inch.

| SKU | Description |
|---------------|---|
| EBHF-4F5B | 1/4 inch Female NPT by 5/16 inch Barbed Bulkhead |
| EBHF-4FE5B | 1/4 inch Female NPT by 5/16 inch Barbed 90° Elbow Bulkhead |
| EBHF-6FE6B | 3/8 inch Female NPT by 3/8 inch Barbed 90° Elbow Brass Bulkhead |
| EBHF-6FE6B-SS | 3/8 inch Female NPT by 3/8 inch Barbed 90° Elbow Stainless Steel Bulkhead |
| EBHF-8FE6B | 1/2 inch Female NPT by 3/8 inch Barbed 90° Elbow Bulkhead |

PEB SERIES



The PEB Series Stem connector to Elbow Barbed Fittings comes in Acetal, Polypropylene, and Kynar® which can be added to a Push-to-Connect connector to terminate in a barbed connection for use with Polyethylene, Vinyl, or braided Vinyl tubing. Stem sizes range from 1/2 inch to 1/4 inch reducing to a 1/4 inch Barbed Fitting. Gray or White Acetal are NSF and FDA-approved and have Buna seals for air, gases, and potable water applications. White Polypropylene with EPDM seals or PVDF with FKM seals. Maximum temperature 140°F at 60 psi for Polypropylene.

| SKU | Description |
|---------|---------------------------------|
| PEB-4 | 1/4 OD Stem by 1/4 Barb Elbow |
| PEB-4S5 | 1/4 OD Stem by 5/16 Barb Elbow |
| PEB-5 | 5/16 OD Stem by 5/16 Barb Elbow |
| PEB-5S4 | 5/16 OD Stem by 1/4 Barb Elbow |
| PEB-5S5 | 5/16 OD Stem by 5/16 Barb Elbow |
| PEB-6 | 3/8 OD Stem by 3/8 Barb Elbow |
| PEB-6S4 | 3/8 OD Stem by 1/4 Barb Elbow |
| PEB-6S5 | 3/8 OD Stem by 5/16 Barb Elbow |



PSB SERIES

Stem connector to Barbed Fittings Acetal, Polypropylene, and Kynar® can be added to a Push-to-Connect connector to terminate in a barbed connection for use with Polyethylene, Vinyl, or braided Vinyl tubing. Stem sizes range from 1/2 inch to 1/4 inch reducing to a 1/4 inch Barbed Fitting. Gray or White Acetal are NSF and FDA-approved and have Buna seals for use in air, gases, and potable water applications. White Polypropylene with EPDM seals or PVDF with FKM seals. Maximum temperature 140°F at 60 psi for Polypropylene.

| SKU | Description |
|------------|--|
| PSB-4-GA | 1/4 inch Stem by 1/4 inch Barb Gray Acetal Push-in |
| PSB-4-K | 1/4 inch Stem by 1/4 inch Barb PVDF Push-in |
| PSB-4S3-GA | 1/4 inch Stem by 3/16 Barb Gray Acetal Push-in |
| PSB-4S4-K | 1/4 inch Stem by 1/4 inch Barb PVDF Push-in |

| SKU | Description |
|------------|--|
| PSB-4S5-GA | 1/4 inch Stem by 5/16 inch Barb Gray Acetal Push-in |
| PSB-4-WP | 1/4 inch Stem by 1/4 inch Barb White Polypropylene Push-in |
| PSB-5-GA | 5/16 inch Stem by 5/16 inch Barb Gray Acetal Push-in |
| PSB-5S3-GA | 5/16 inch Stem by 3/16 Barb Gray Acetal Push-in |
| PSB-5S4-GA | 5/16 inch Stem by 1/4 inch Barb Gray Acetal Push-in |
| PSB-5S6-GA | 5/16 inch Stem by 3/8 inch Barb Gray Acetal Push-in |
| PSB-6-GA | 3/8 inch Stem by 3/8 inch Barb Gray Acetal Push-in |
| PSB-6-K | 3/8 inch Stem by 3/8 inch Barb PVDF Push-in |
| PSB-6S4-GA | 3/8 inch Stem by 1/4 inch Barb Gray Acetal Push-in |
| PSB-6S4-K | 3/8 inch Stem by 1/4 inch Barb PVDF Push-in |
| PSB-6S5-GA | 3/8 inch Stem by 5/16 inch Barb Gray Acetal Push-in |
| PSB-6S8-GA | 3/8 inch Stem by 1/2 inch Barb Gray Acetal Push-in |
| PSB-6S8-WP | 3/8 inch Stem by 1/2 inch Barb White Polypropylene Push-in |
| PSB-6-WP | 3/8 inch Stem by 3/8 inch Barb White Polypropylene Push-in |
| PSB-8-GA | 1/2 inch Stem by 1/2 inch Barb Gray Acetal Push-in |
| PSB-8S6-GA | 1/2 inch Stem by 3/8 inch Barb Gray Acetal Push-in |
| PSB-8S6-WP | 1/2 inch Stem by 3/8 inch Barb White Polypropylene Push-in |
| PSB-8-WP | 1/2 inch Stem by 1/2 inch Barb White Polypropylene Push-in |