



VALVES

VALVES

Valves make up the first step beyond the compressor or pump to direct, divert, decrease, or stop, the flow of Liquids or Gases.

Pneuline has all your valve needs from Ball Valves to Flow Control, Check Valves, and many more!



BALL VALVES

BALL VALVES

We offer ball valves made of various materials and sizes. For example: metal ball valves made of brass, stainless, and aluminum. Plastic ball valves made of PVC, PBT, Polypropylene, PVDF, and Nylon.



METAL BALL VALVES

METAL BALL VALVES

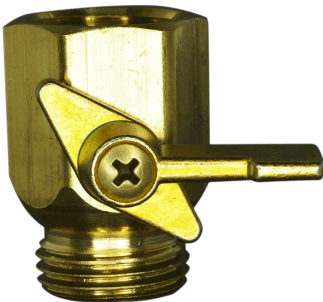
Metal Ball Valves made of Brass, Stainless steel, bronze, Aluminum. 2 way and 3-way.



2-WAY METAL BALL VALVES

2-WAY METAL BALL VALVES

2-Way Metal Ball Valves offer an easy way to control the flow of gas or liquid. Pneuline distributes several different metal valve options such as our MSBV and VBW series.



GSBV SERIES

The GSBV Series is a One-way Brass garden hose Ball Valve.



BBV SERIES

The Inline Two-Way Brass Ball Valve has a maximum operating pressure of 500 psi and a maximum operating temperature of 180° F.

Inlet sizes are 1/4", 5/16", and 3/8" Barb, 1/4" Compression fitting, 1/4" female threads, 1/8" and 1/4" male threads, and 11/16" male nozzle.

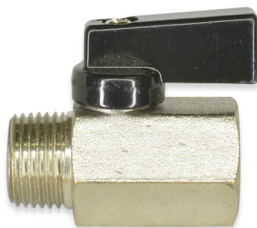
The outlet sizes are 1/4" and 3/8" barb, 1/4" and 3/8" Compression, 1/4" female threads, and 1/8" and 1/4" male threads.

These valves are not panel mountable. The handle rests over the inlet side but the reverse configuration is available. The standard through hole is .218 but the 3/8" sizes have a .312 through hole.

SKU		Definition
BBV-4F4M	1/4 FNPT by 1/4 MNPT	
BBV-4F4F	1/4 FNPT by 1/4 FNPT	
BBV-4F4B	1/4 FNPT by 1/4 Barb	
BBV-4F2M	1/4 FNPT by 1/8 MNPT	
BBV-4F1116M	1/4 FNPT by 11/16 MNPT	
BBV-4C4M	1/4 Comp by 1/4 MNPT	
BBV-4C4C	1/4 Comp by 1/4 Comp	
BBV-4B4M	1/4 Barb by 1/4 MNPT	
BBV-2F2M	1/8 FNPT by 1/8 MNPT	
BBV-2F2F	1/8 FNPT by 1/8 FNPT	

SKU	Definition
BBV-12F12F	3/4 FNPT by 3/4 FNPT
BBV-6F6F	3/8 FNPT by 3/8 FNPT with .312 through hole
BBV-6F4M	3/8 FNPT by 1/4 MNPT with .312 through hole
BBV-6C6C	3/8 Comp by 3/8 Comp
BBV-6B6M	3/8 Barb by 3/8 MNPT
BBV-5PC4M	5/16 Plastic Comp by 1/4 MNPT
BBV-4PC4M	1/4 Plastic Comp by 1/4 MNPT
BBV-4M6C	1/4 MNPT by 1/4 Comp
BBV-4M4M	1/4 MNPT by 1/4 MNPT
BBV-4M4F	1/4 MNPT by 1/4 FNPT
BBV-4M1116F	1/4 MNPT 11/16 FNPT
BBV-4FL4M	1/4 Flare by 1/4 MNPT

RV5 SERIES



This is a Chrome-plated Forged Brass Mini Ball Valve with a Chrome-plated Brass ball. The maximum working pressure is 450 psi, 142 psi at 356°F, and 355 psi at 212°F. Available in female by female and male by female. Available with a flag handle, a lever handle, or a tee handle, or can be adjusted with a screwdriver.

This product is not lead-free.

SKU	Definition
RV5-2F	1/8 FNPT Taper Ball Valve
RV5-4F	1/4 FNPT Taper Ball Valve
RV5-4M4F	1/4 MNPT Taper by FNPT Taper Ball Valve
RV5-6M6F	3/8 MNPT Taper by FNPT Taper Full Port Ball Valve
RV5-6F	3/8 FNPT Taper Ball Valve
RV5-8F	1/2 FNPT Taper Ball Valve
RV5-2F2M	1/8 FNPT Taper 1/8 MNPT Taper Ball Valve
RV5-4F4M	1/4 FNPT Taper 1/4 MNPT Taper Ball Valve
RV5-6F6M	3/8 FNPT Taper 3/8 MNPT Taper Ball Valve

VBW SERIES



This two-way Brass Ball Valve has a pressure rating of 600 psi, and 150 psi is the working steam pressure. The maximum temperature is 366°F. The stem is blow-out proof, the ball is Chrome-plated Brass and the seat is PTFE. There is an adjustable screw packing nut. Both ports are equal in size and female NPT threads.

****Also available in 316 Stainless Steel. It has an internal entry blow-out-proof stem. The pressure rating is 2000 psi with a pressure test of API 598 psi. The ball seat and body seal are PTFE. Both ports are equal in size and female NPT threads.*

SKU	Definition
VBW-4F	1/4 Female Two Way Ball Valve Full Port
VBW-6F	3/8 Female Two Way Ball Valve Full Port
VBW-8F	1/2 Female Two Way Ball Valve Full Port
VBW-12F	3/4 Female Two Way Ball Valve Full Port
VBW-16F	1 inch Female Two Way Ball Valve Full Port
VBW-20F	1-1/4 inch Female Two Way Ball Valve Full Port
VBW-24F	1-1/2 inch Female Two Way Ball Valve Full Port
VBW-32F	2 inch Female Two Way Ball Valve Full Port

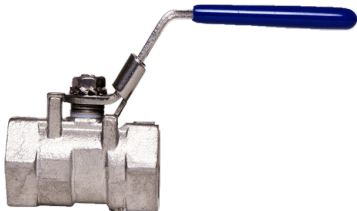
RV2 SERIES



This is a Solid Chrome plated Brass Mini Ball Valve. This valve works in both directions because of a double seal system. It has a blow-out-proof Brass stem. The 1/4 turn handle has a mechanical stop. The maximum working pressure is 235 psi but will handle 300 psi at 75°F. The temperature range is 32°F to 176°F. Available in female by female and male by female. ****This product is not lead-free.****

SKU	Definition
RV2-2F	1/8 FNPT Taper Ball Valve
RV2-2M2F	1/8 MNPT Taper by 1/8 FNPT Taper Ball Valve
RV2-4F	1/4 FNPT Taper Ball Valve
RV2-6F	3/8 FNPT Taper Ball Valve
RV2-8F	1/2 FNPT Taper Ball Valve

SKU	Definition
RV2-2F2M	1/8 FNPT Taper by 1/8 MNPT Taper Ball Valve
RV2-4F4M	1/4 FNPT Taper by 1/4 MNPT Taper Ball Valve
RV2-6F6M	3/8 FNPT Taper by 3/8 MNPT Taper Ball Valve

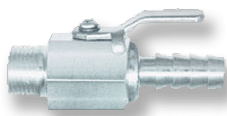


MSBV SERIES

The MSBV Series Ball Valves have a Stainless Steel body, ball, stem, and insert with an 800 psi WOG and PTFE thrust washer. 304 Stainless Steel locking handle. Full ported 1000 psi WoG 2 piece version up to 2-inch Female NPT available.

SKU	Description
MSBV-4F	1/4 FNPT 316 Stainless Ball Valve
MSBV-6F	3/8 FNPT 316 Stainless Ball Valve
MSBV-8F	1/2 FNPT 316 Stainless Ball Valve
MSBV-12F	3/4 FNPT 316 Stainless Ball Valve
MSBV-16F	1 inch FNPT 316 Stainless Ball Valve
MSBV-20F	1-1/4 FNPT 316 Stainless Ball Valve
MSBV-24F	1-1/2 FNPT 316 Stainless Ball Valve

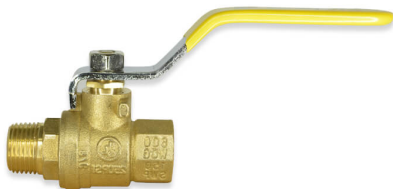
GEV SERIES



The GEV Series Shut-off Ball Valves available in either Brass or Aluminum.

SKU	Description
GEV-4M6B	1/4 Male NPT by 3/8 Barb Ball Valve
GEV-6M6B	3/8 Male NPT by 3/8 Barb Ball Valve
GEV-8M8B	1/2 Male NPT by 1/2 Barb Ball Valve

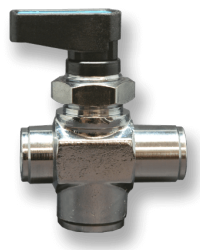
MASV SERIES



The MASV series are forged Brass Ball Valves with NBR O-rings 200 psi WOG

SKU	Description
MASV-2M2F	1/8 MNPT by 1/8 FNPT Forged Mini Ball Valve
MASV-2M4F	1/8 MNPT by 1/4 FNPT Forged Mini Ball Valve
MASV-4M4F	1/4 MNPT by 1/4 FNPT Forged Mini Ball Valve
MASV-6M6F	3/8 MNPT by 3/8 FNPT Forged Mini Ball Valve
MASV-4M6F	1/4 MNPT by 3/8 FNPT Forged Mini Ball Valve
MASV-8M8F	1/2 MNPT by 1/2 FNPT Forged Mini Ball Valve
MASV-2M	1/8 MNPT by 1/8 MNPT Forged Mini Ball Valve
MASV-4M	1/4 MNPT by 1/4 MNPT Forged Mini Ball Valve
MASV-6M	3/8 MNPT by 3/8 MNPT Forged Mini Ball Valve
MASV-8M	1/2 MNPT by 1/2 MNPT Forged Mini Ball Valve
MASV-4B8M	1/4 Barb by 1/8 MNPT Forged Mini Ball Valve
MASV-4B4M	1/4 Barb by 1/4 MNPT Forged Mini Ball Valve
MASV-6B4M	3/8 Barb by 1/4 MNPT Forged Mini Ball Valve
MASV-6B6M	3/8 Barb by 3/8 MNPT Forged Mini Ball Valve
MASV-8B8M	1/2 Barb by 1/2 MNPT Forged Mini Ball Valve

AMS SERIES



AMS Series Ball Valves available in inline, elbows, and 3-way tee configurations, are Chrome Plated Brass with female NPT, male NPT, and Push-to-Connect ports. They all have a temperature range of 0° F to 175° F and are recommended for air, oil, water, and gas use.

The thread sizes for the female-to-female and female-to-male valves are 1/8", 1/4", 3/8", and 1/2". The tube sizes for the Push-to-Connect valves are 1/8" by 1/8", 1/4" by 1/4" and 3/8" by 3/8".

On the male NPT by Push-to-Connect, the sizes are 5/32" tube by 1/8" MNPT, 1/4" tube by 1/8" MNPT, 1/4" tube by 1/4" MNPT, and 3/8" tube by 3/8" MNPT.

The elbow and tee sizes are 1/8", 1/4" and 3/8". The elbows and tees are panel-mountable and the tees are available with open or closed centers.

SKU	Description
AMS-2-2F	1/8 inch FNPT 2 Port Valve Closed Center Ball Valve
AMS-2-4F	1/4 inch FNPT 2-Port Chrome-Plated Ball Valve
AMS-2-6F	3/8 inch FNPT 2-Port Chrome-Plated Ball Valve
AMS-2F	1/8 inch FNPT by 1/8 inch FNPT 2-Port Straight Ball Valve
AMS-2FOC	1/8 inch FNPT by 1/8 inch FNPT Open Center 2-Port Ball Valve
AMS-2M	1/8 inch MNPT by 1/8 inch FNPT 2-Port Ball Valve
AMS-2M532PI	1/8 inch FNPT by 5/32 inch OD Straight Push-In 2-Port Ball Valve
AMS-2MF	1/8 inch MNPT by 1/8 inch FNPT 2-Port Straight Ball Valve
AMS-3-2F	1/8 inch FNPT 3-Port Valve Open Center Ball Valve
AMS-3-4F	1/4 inch FNPT 3-Port Ball Valve
AMS-3-6F	3/8 inch FNPT 3-Port Ball Valve
AMS-L-2F	1/8 inch FNPT 90 degree Elbow Ball Valve PM
AMS-L-4F	1/4 inch FNPT 90 degree Elbow Ball Valve PM
AMS-L-6F	3/8 inch FNPT 90 degree Elbow Ball Valve PM



MBBV SERIES

The MBBV Series are standard Ported Forged Brass WOG Ball Valves that can withstand up to 400 psi with a chrome-plated ball and Buna O-rings. NSF 61, Full port available, 948 NSF full port Male by Female also available.

SKU	Description
MBBV-8F	1/2 inch Female Full Port Brass 600 psi WOG Ball Valve
MBBV-4F	1/4 inch Female Brass Ball Valve 600 psi Ball Valve
MBBV-6F	3/8 inch Female Brass Ball Valve 600 psi Ball Valve
MBBV-12F	3/4 inch Female Brass Ball Valve 600 psi Ball Valve
MBBV-16F	1 inch Female Brass Ball Valve 600 psi Ball Valve
MBBV-20F	1-1/4 inch Female Brass Ball Valve 600 psi Ball Valve
MBBV-24F	1-1/2 inch Female Brass Ball Valve 600 psi Ball Valve
MBBV-32F	2 inch Female Brass Ball Valve 600 psi Ball Valve
MBBV-40F	2-1/2 inch Female Brass Ball Valve 600 psi Ball Valve
MBBV-48F	3 inch Female Brass Ball Valve 600 psi Ball Valve
MBBV-64F	4 inch Female Brass Ball Valve 600 psi Ball Valve



3- Way Metal Ball Valves

3-WAY METAL BALL VALVES

These versatile valves are like the traffic roundabouts of fluid control. With three pathways at their disposal, they deftly guide liquids and gases—mixing, diverting, or isolating.

MBBV 3 SERIES



MBBV Series is a forged 3-way ball valve that offers flow options in both directions as well as allowing unimpeded flow when the handle is placed at a 45° angle. In addition, the temperature rating for this valve is 0-230°F. Also, the pressure rating of this ball valve is 600 WOG.

- Full Port
- Blow-Out Proof System
- Double O-Ring Stem Packing
- PTFE Seal
- Not Lead Free

SKU	Description
MBBV-8F	1/2 inch Female Full Port Brass 600 psi WOG Ball Valve
MBBV-4F	1/4 inch Female Brass Ball Valve 600 psi Ball Valve
MBBV-6F	3/8 inch Female Brass Ball Valve 600 psi Ball Valve
MBBV-12F	3/4 inch Female Brass Ball Valve 600 psi Ball Valve
MBBV-16F	1 inch Female Brass Ball Valve 600 psi Ball Valve
MBBV-20F	1-1/4 inch Female Brass Ball Valve 600 psi Ball Valve
MBBV-24F	1-1/2 inch Female Brass Ball Valve 600 psi Ball Valve
MBBV-32F	2 inch Female Brass Ball Valve 600 psi Ball Valve
MBBV-40F	2-1/2 inch Female Brass Ball Valve 600 psi Ball Valve
MBBV-48F	3 inch Female Brass Ball Valve 600 psi Ball Valve
MBBV-64F	4 inch Female Brass Ball Valve 600 psi Ball Valve



BSL SERIES

The BSL Series are Detent Panel Mount 5-Way Ball Valves in 10-32, 1/8 inch Female NPT, 1/4 inch Female NPT, 1/8 inch Male NPT, or 1/4 inch Male NPT with EPDM seals and 500 psi.

SKU	Description
BSL-1032F	10-32 FNPT Panel Mount 5-Way Ball Valve
BSL-2F	1/8 inch FNPT Panel Mount 5-Way Ball Valve
BSL-4F	1/4 inch FNPT Panel Mount 5-Way Ball Valve
BSL-2M	1/8 inch MNPT Panel Mount 5-Way Ball Valve
BSL-4M	1/4 inch MNPT Panel Mount 5-Way Ball Valve



PLASTIC BALL VALVES

PLASTIC BALL VALVES

Plastic Ball Valves, commonly used in landscaping, are essential when trying to control the flow of liquid. We offer 2-way and 3-way valves in a variety of sizes and materials.



2-WAY PLASTIC BALL VALVES

2-WAY PLASTIC BALL VALVES

2-Way Plastic Ball Valves are a simple solution when you need a simple flow restriction device. Pneuline offers several different ball valve variations.

2WBV SERIES



This Ball Valve is made of white Polypropylene with EPDM O-rings. It is a 1/4 turn from open to closed. Also, the maximum pressure is 150 psi and the temperature range is 33 F to 140 F. To be used with potable water, it is not suitable for inert gases or air. Furthermore, one end is male NPT threaded and the other end is a socket fitting.

HV SERIES



The HV Series Hand Valves are made with a PBT body, nickel-plated threads, and Buna-N O-rings. In addition, the valves can stop or reduce flow. The working pressure is 150 psi and the temperature range is 32° F to 140° F. They can be used for compressed air or inert gases.

SKU	DESCRIPTION
HV-2M4P	1/8 MNPT by 1/4 PBT
HV-2M5P	1/8 MNPT by 5/16 PBT
HV-4M4P	1/4 MNPT by 1/4 PBT
HV-4M5P	1/4 MNPT by 5/16 PBT
HV-6M4P	3/8 MNPT by 1/4 PBT
HV-6M5P	3/8 MNPT by 5/16 PBT
HV-2M	1/8 MNPT
HV-4M2M	1/4 MNPT by 1/8 MNPT
HV-4M	1/4 MNPT
HV-4M6M	1/4 MNPT by 3/8 MNPT
HV-6M	3/8 MNPT
HV-8M	1/2 MNPT
HV-8M6M	1/2 MNPT by 3/8 MNPT
HV-4P	1/4 PBT
HV-5P	5/16 PBT
HV-5P4P	5/16 PBT by 1/4 PBT

LGH SERIES



The LGH Series is a Two-way Ball Valve. It has an operating pressure of 150 psi, and a working temperature of up to 140° F. Available in variations of Female and Male GHT, and Female and Male NPT with combinations of these sizes: 3/8 inch, 1/2 inch, and 3/4 inch; all with a .625 through hole. Materials available are Gray PVC and Polypropylene. The PVC and Polypropylene materials are used for chemical resistance applications and are NSF Standard 61 Certified. PVC with EPDM seals are standard. Other seal options are Buna-N and Viton®. Panel Mounts are not available.

SKU	Description
LGH-34F12M	3/4 FNPT by 1/2 MNPT Ball Valve
LGH-34F34MGH	3/4 FNPT by 3/4 MGH Ball Valve
LGH-34F6B	3/4 FNPT by 3/8 Barb Ball Valve
LGH-34F-B	3/4 FNPT by 3/4 FNPT PVC/Buna Ball Valve
LGH-34FF	3/4 FNPT by 3/4 FNPT Ball Valve
LGH-34FGH34F	3/4 FGH by 3/4 FNPT Ball Valve
LGH-34FGH34M	3/4 FGH by 3/4 MNPT Ball Valve
LGH-34FGH6B	3/4 FGH by 3/8 Barb Ball Valve
LGH-34FGH8M	3/4 FGH by 1/2 MNPT Ball Valve
LGH-34FGHMGH	3/4 FGH by 3/4 MGH Ball Valve
LGH-34FM	3/4 FNPT by 3/4 MNPT Ball Valve
LGH-34FM-E	3/4 FNPT to 3/4 MNPT PVC/EPDM Ball Valve
LGH-34FM-PP-E	3/4 FNPT to 3/4 MNPT Bk Polypropylene/EPDM Ball Valve

PJV SERIES



The PJV Series Micro Ball Valves are of Polypropylene and reinforced fiberglass with a 90-degree rotating handle and FKM O-rings. The standard pressure is 150 psi with a maximum temperature of 150° with a maximum pressure of 300 psi at 70° F.

SKU	Description
PJV-38B	3/8 inch Barbed Glass-Filled Polypropylene Micro Ball Valve with FKM Seals
PJV-38F	3/8 inch Female Glass-Filled Polypropylene Micro Ball Valve with FKM Seals
PJV-4F4M	1/4 inch Female by 1/4 inch Male
PJV-4B	1/4 inch Barbed Polypropylene Micro Ball Valve
PJV-6F6M	3/8 inch Female by 3/8 inch Male Polypropylene Micro Ball Valve
PJV-6B	3/8 inch Barbed Polypropylene Micro Ball Valve
PJV-8F8M	1/2 inch Female by 1/2 inch Male Polypropylene Micro Ball Valve
PJV-8B	1/2 inch Barbed Polypropylene Micro Ball Valve
PJV-12B	1/2 inch Barbed Polypropylene Micro Ball Valve

BRS SERIES



The BRS Series compact PVC quarter-turn shut-off Ball Valves with PTFE sets and EPDM O-ring seals are used in industrial and plumbing applications. Available in schedule 80 (gray) and schedule 40 (white). Sizes range from 1/2 inch to 2 inches.

SKU	Description
BRS-12F	1/2 inch Female PVC Ball Valve
BRS-34F	3/4 inch Female PVC Ball Valve
BRS-1F	1 inch Female PVC Ball Valve
BRS-114F	1-1/4 inch Female PVC Ball Valve
BRS-112F	1-1/2 inch Female PVC Ball Valve
BRS-2F	2 inch Female PVC Ball Valve

LRH SERIES



The LRH Series Two-Way Ball Valves are made from PVC or ABS plastic with a 7 CV Flow and 125 psi with Buna seals standard. (one-way valve is optional)

SKU	Description
LRH-MGH8M	3/4 inch Male GHT by 1/2 inch NPT Ball Valve
LRH-MGMG	3/4 inch MGHT by Male GHT Ball Valve
LRH-8F8M	1/2 inch Female NPT by 1/2 inch Male NPT Ball Valve
LRH-12F12M	3/4 inch Female NPT by 3/4 inch Male NPT Ball Valve
LRH-8SMG	1/2 inch Socket by MGH Ball Valve
LRH-12SMG	3/4 inch Socket by MGH Ball Valve

PKV SERIES



The PKV Series is a Polypropylene Ball Valve with Push-to-Connect connections and EPDM seals. Not suitable for vacuum, air, or inert gases.

SKU	Description
PKV-14	1/4 inch OD Push-in Shut-off Ball Valve
PKV-38	3/8 inch OD Push-in Shut-off Ball Valve
PKV-4M14	1/4 inch Male NPT by 1/4 inch OD Ball Valve
PKV-4F14E	1/4 inch Female NPT by 1/4 inch OD Elbow Ball Valve
PKV-4F38E	1/4 inch Female NPT by 3/8 OD Elbow Ball Valve



EBVA SERIES

The EBV Series One-Way single-direction Flow Ball Valve is made of PVC with standard Buna seals. Maximum pressure 125 psi and 140 degrees F and a thru-hole of .437 used for air, water, gas, oxygen, and refrigeration applications. (not for vacuum)

SKU	Description
EBVA-4B	1/4 Barb Ball Valve
EBVA-6B	3/8 Barb Ball Valve
EBVA-8B	1/2 Barb Ball Valve
EBVA-4F	1/4 MNPT Ball Valve
EBVA-6F	3/8 FNPT Ball Valve
EBVA-8F	1/2 FNPT Ball Valve
EBVA-4F-4B	1/4 FNPT by 1/4 Barb Ball Valve
EBVA-6F-6B	3/8 FNPT by 3/8 Barb Ball Valve
EBVA-8F-8B	1/2 FNPT by 1/2 Barb Ball Valve
EBVA-4M	1/4 MNPT Ball Valve
EBVA-6M	3/8 MNPT Ball Valve
EBVA-8M	1/2 MNPT Ball Valve
EBVA-4M-4B	1/4 MNPT by 1/4 Barb Ball Valve
EBVA-6M-6B	3/8 MNPT by 3/8 Barb Ball Valve
EBVA-8M-8B	1/2 MNPT by 1/2 Barb Ball Valve
EBVA-4P-4B	1/4 Push-to-Connect by 1/4 Barb Ball Valve
EBVA-6P-6B	3/8 Push-to-Connect by 3/8 Barb Ball Valve
EBVA-8P-8B	1/2 Push-to-Connect by 1/2 Barb Ball Valve
EBVA-4C-4B	1/4 Compression by 1/4 Barb Ball Valve
EBVA-6C-6B	3/8 Compression by 3/8 Barb Ball Valve
EBVA-8C-8B	1/2 Compression by 1/2 Barb Ball Valve

EBV SERIES



The EBV Series One-Way single-direction Flow 90-degree Ball Valve is made of PVC with standard Buna seals. Maximum pressure 125 psi and 140 degrees F and a thru-hole of .437 used for air, water, gas, oxygen, and refrigeration applications. (not for vacuum)

SKU	Description
EBV-4B	1/4 Barb Ball Valve
EBV-6B	3/8 Barb Ball Valve
EBV-8B	1/2 Barb Ball Valve
EBV-4F	1/4 FNPT Ball Valve
EBV-6F	3/8 FNPT Ball Valve
EBV-8F	1/2 FNPT Ball Valve
EBV-4F-4B	1/4 FNPT by 1/4 Barb Ball Valve
EBV-6F-6B	3/8 FNPT by 3/8 Barb Ball Valve
EBV-8F-8B	1/2 FNPT by 1/2 Barb Ball Valve
EBV-4M	1/4 MNPT Ball Valve
EBV-6M	3/8 MNPT Ball Valve
EBV-8M	1/2 MNPT Ball Valve
EBV-4M-4B	1/4 MNPT by 1/4 Barb Ball Valve
EBV-6M-6B	3/8 MNPT by 3/8 Barb Ball Valve
EBV-8M-8B	1/2 MNPT by 1/2 Barb Ball Valve
EBV-4P-4B	1/4 Push-to-Connect by 1/4 Barb Ball Valve
EBV-6P-6B	3/8 Push-to-Connect by 3/8 Barb Ball Valve
EBV-8P-8B	1/2 Push-to-Connect by 1/2 Barb Ball Valve
EBV-4C-4B	1/4 Comp by 1/4 Barb Ball Valve
EBV-6C-6B	3/8 Comp by 3/8 Barb Ball Valve
EBV-8C-8B	1/2 Comp by 1/2 Barb Ball Valve



PBV6 2 SERIES

The PBV6 Series is a Two-way two directional 3/8 inch Flow Panel Mount Ball Valve made of NSF-approved PVC, Polypropylene, or Nylon and designed to promote multiple configurations. Used for air, water, beverage, and chemical applications.

SKU	Definition
PBV6-4F	3/8 Flow 1/4 FNPT PVC Ball Valve
PBV6-6F	3/8 Flow 3/8 FNPT PVC Ball Valve
PBV6-8F	3/8 Flow 1/2 FNPT PVC Ball Valve
PBV6-2M	3/8 Flow 1/8 MNPT PVC Ball Valve
PBV6-4M	3/8 Flow 1/4 MNPT PVC Ball Valve
PBV6-6M	3/8 Flow 3/8 MNPT PVC Ball Valve
PBV6-8M	3/8 Flow 1/2 MNPT PVC Ball Valve
PBV6-2B	3/8 Flow 1/8 Barb PVC Ball Valve
PBV6-4B	3/8 Flow 1/4 Barb PVC Ball Valve
PBV6-6B	3/8 Flow 3/8 Barb PVC Ball Valve
PBV6-8B	3/8 Flow 1/2 Barb PVC Ball Valve
PBV6-4PI	3/8 Flow 1/4 Push-to-Connect PVC Ball Valve
PBV6-6PI	3/8 Flow 3/8 Push-to-Connect PVC Ball Valve
PBV6-8PI	3/8 Flow 1/2 Push-to-Connect PVC Ball Valve
PBV6-4C	3/8 Flow 1/4 Compression PVC Ball Valve

PBV5 2 SERIES



The PBV5 Series is a Two-way Ball Valve with an operating pressure of 125 psi, 140° F, with .312 thru hole in multiple configurations of Barb, Push-in, or Thread. PVC and White Filled Polypropylene materials used for chemical resistance applications are NSF Standard 42 Certified. MakroBlend® (a Polycarbonate and PBT blend) is an NSF Standard 51 certified material. An optional Panel Mount is available for a .750 thru hole and comes with a Brass knurled nut or Electroless Nickel-plated Hex mount nut. The Flag Handle comes standard with an optional round Knurled Handle. The maximum panel is .125

SKU	Description
PBV5-2W-4C	5/16 Flow 1/4 Compression PVC 2-Way Ball Valve
PBV5-2W-4F	5/16 Flow 1/4 FNPT PVC 2-Way Ball Valve
PBV5-2W-4F-PVCE	5/16 Flow 1/4 FNPT PVC EPDM 2-Way Ball Valve
PBV5-2W-4F-PVCV	5/16 Flow 1/4 FNPT PVC EPDM 2-Way Ball Valve
PBV5-2W-4M	5/16 Flow 1/4 MNPT PVC 2-Way Ball Valve
PBV5-2W-4PE-PM JG	5/16 Flow 1/4 Barb EPDM PM JG 2-Way Ball Valve
PBV5-2W-5B	5/16 Flow 5/16 Barb PVC 2-Way Ball Valve
PBV5-2W-4PI	5/16 Flow 1/4 Push-to-Connect PVC 2-Way Ball Valve
PBV5-2W-5F	5/16 Flow 5/16 FNPT PVC 2-Way Ball Valve
PBV5-2W-5M	5/16 Flow 5/16 MNPT PVC 2-Way Ball Valve
PBV5-2W-5PI	5/16 Flow 5/16 Push-to-Connect PVC 2-Way Ball Valve
PBV5-2W-6B	5/16 Flow 3/8 Barb PVC 2-Way Ball Valve
PBV5-2W-6F	5/16 Flow 3/8 FNPT PVC 2-Way Ball Valve
PBV5-2W-6M	5/16 Flow 3/8 MNPT PVC 2-Way Ball Valve
PBV5-2W-6PI	5/16 Flow 3/8 Push-to-Connect PVC 2-Way Ball Valve
PBV5-2W-8B	5/16 Flow 1/2 Barb PVC 2-Way Ball Valve
PBV5-2W-8F	5/16 Flow 1/2 FNPT PVC 2-Way Ball Valve
PBV5-2W-8M	5/16 Flow 1/2 MNPT PVC 2-Way Ball Valve
PBV5-2W-4B	5/16 Flow 1/4 Barb PVC 2-Way Ball Valve
PBV5-2W-2M	5/16 Flow 1/8 MNPT PVC 2-Way Ball Valve
PBV5-2W-2F	5/16 Flow 1/8 FNPT PVC 2-Way Ball Valve
PBV5-2W-2C	5/16 Flow 1/8 Compression PVC 2-Way Ball Valve
PBV5-2W-2B	5/16 Flow 1/8 Barb PVC 2-Way Ball Valve



3-WAY PLASTIC BALL VALVES

3-WAY PLASTIC BALL VALVES

We offer a wide variety of valves to fit your needs such as our PBV5 and PBV6 Series.



3WBV SERIES

These ball valves are made of FDA Polypropylene with Viton® O-rings and 316 stainless steel handles. All connections are female NPT threaded. In addition, the pressure rating is 150 psi at 73°F. They are designed for use with liquid, gas, and vacuum applications. Inlet and outlet sizes are 1/8", 1/4", 3/8", 1/2", and 3/4". Also available in PVDF with actuation. Also, they are available in 2-way, 4-position 3-way, and 2-position 3-way orientations.



PBV6 3 SERIES

The PBV6 Series is a Three-way two directional 3/8 inch Flow Panel Mount Ball Valve made of NSF-approved PVC, Polypropylene, or Nylon and designed to promote multiple configurations. Used for air, water, beverage, and chemical applications.

SKU	Definition
PBV6-4F	3/8 Flow 1/4 FNPT PVC Ball Valve
PBV6-6F	3/8 Flow 3/8 FNPT PVC Ball Valve
PBV6-8F	3/8 Flow 1/2 FNPT PVC Ball Valve
PBV6-2M	3/8 Flow 1/8 MNPT PVC Ball Valve
PBV6-4M	3/8 Flow 1/4 MNPT PVC Ball Valve
PBV6-6M	3/8 Flow 3/8 MNPT PVC Ball Valve
PBV6-8M	3/8 Flow 1/2 MNPT PVC Ball Valve
PBV6-2B	3/8 Flow 1/8 Barb PVC Ball Valve
PBV6-4B	3/8 Flow 1/4 Barb PVC Ball Valve
PBV6-6B	3/8 Flow 3/8 Barb PVC Ball Valve
PBV6-8B	3/8 Flow 1/2 Barb PVC Ball Valve
PBV6-4PI	3/8 Flow 1/4 Push-to-Connect PVC Ball Valve
PBV6-6PI	3/8 Flow 3/8 Push-to-Connect PVC Ball Valve
PBV6-8PI	3/8 Flow 1/2 Push-to-Connect PVC Ball Valve
PBV6-4C	3/8 Flow 1/4 Compression PVC Ball Valve



PBV5 3 SERIES

The PBV5 Series is a Three-way Ball Valve available with an operating pressure of 125 psi, 140° F, with .312 thru hole in multiple configurations of Barb, Push-in, or Thread. PVC and White Filled Polypropylene materials that are used for chemical resistance applications and are NSF Standard 42 Certified. Also, MakroBlend® (a Polycarbonate and PBT blend) is an NSF Standard 51-certified material. An optional Panel Mount is available for a .750 thru hole and comes with a Brass knurled nut or Electroless Nickel-plated Hex mount nut. In fact, the Flag Handle comes standard with an optional round Knurled Handle. The maximum panel is .125

SKU	Description
PBV5-3W-4C	5/16 Flow 1/4 Compression PVC 3-Way Ball Valve
PBV5-3W-4F	5/16 Flow 1/4 FNPT PVC 3-Way Ball Valve
PBV5-3W-4F-PVCE	5/16 Flow 1/4 FNPT PVC EPDM 3-Way Ball Valve
PBV5-3W-4F-PVCV	5/16 Flow 1/4 FNPT PVC EPDM 3-Way Ball Valve
PBV5-3W-4M	5/16 Flow 1/4 MNPT PVC 3-Way Ball Valve
PBV5-3W-4PE-PM JG	5/16 Flow 1/4 Barb EPDM PM JG 3-Way Ball Valve
PBV5-3W-5B	5/16 Flow 5/16 Barb PVC 3-Way Ball Valve
PBV5-3W-4PI	5/16 Flow 1/4 Push-to-Connect PVC 3-Way Ball Valve
PBV5-3W-5F	5/16 Flow 5/16 FNPT PVC 3-Way Ball Valve
PBV5-3W-5M	5/16 Flow 5/16 MNPT PVC 3-Way Ball Valve
PBV5-3W-5PI	5/16 Flow 5/16 Push-to-Connect PVC 3-Way Ball Valve
PBV5-3W-6B	5/16 Flow 3/8 Barb PVC 3-Way Ball Valve
PBV5-3W-6F	5/16 Flow 3/8 FNPT PVC 3-Way Ball Valve
PBV5-3W-6M	5/16 Flow 3/8 MNPT PVC 3-Way Ball Valve
PBV5-3W-6PI	5/16 Flow 3/8 Push-to-Connect PVC 3-Way Ball Valve
PBV5-3W-8B	5/16 Flow 1/2 Barb PVC 3-Way Ball Valve
PBV5-3W-8F	5/16 Flow 1/2 FNPT PVC 3-Way Ball Valve
PBV5-3W-8M	5/16 Flow 1/2 MNPT PVC 3-Way Ball Valve
PBV5-3W-4B	5/16 Flow 1/4 Barb PVC 3-Way Ball Valve
PBV5-3W-2M	5/16 Flow 1/8 MNPT PVC 3-Way Ball Valve
PBV5-3W-2F	5/16 Flow 1/8 FNPT PVC 3-Way Ball Valve
PBV5-3W-2C	5/16 Flow 1/8 Compression PVC 3-Way Ball Valve
PBV5-3W-2B	5/16 Flow 1/8 Barb PVC 3-Way Ball Valve



CHECK VALVES

CHECK VALVES

Pneuline offers a wide variety of check valves in multiple sizes, materials, and flow rates. Browse Products now and find the perfect fit for your application needs.



METAL CHECK VALVES

METAL CHECK VALVES

Metal inline valves of brass, aluminum, and stainless steel are provided in ball check, piston, and poppet styles. These valves are used in agricultural, food, beverage water, and medical applications. Most products are made with varying thread designs.



BALL CHECK VALVES

BALL CHECK VALVES

Ball Check Valves can be utilized in many applications. They are used for preventing backflow in a pipeline system.

BLC SERIES-2, 10, 15 PSI



Brass or 303 Stainless.

10-32 Female Threads, 1/8 Nipple available with 2 PSI, 10 PSI, or no spring.

1/4 Nipple is available with 2, and 15 PSI crack pressure or no spring.

1/8 Mnpt to 1/8 Fnpt, or 1/8 Female to 1/8 Male available in 2, or 10 PSI cracking pressure.

1/4 Male to Female NPT or 1/4 Female to 1/4 Male available in 2, or 15 PSI. Also available with no spring.

125 PSI Working pressure for 10-32 all others 200 PSI.

SKU	Description
BLC-1032-10	10-32 Female 10 psi Brass Check Valve
BLC-1032-2	10-32 Female 2 psi Brass Check Valve
BLC-1032	10-32 Female No Spring Brass Check Valve
BLC-1032-SS-10	10-32 Female No Spring 303 SS Check Valve
BLC-1032-SS-2	10-32 Female No Spring 303 SS Check Valve
BLC-1032-SS	10-32 Female No Spring 303 SS Check Valve
BLC-18-10	1/8 Male Nipple 10 psi Brass Check Valve
BLC-18-2	1/8 Male Nipple 2 psi Brass Check Valve
BLC-18-SS-10	1/8 Male Nipple 10 PSI 303 Check Valve
BLC-18-SS-2	1/8 Male Nipple 2 PSI 303 Check Valve
BLC-18-SS	1/8 Male Nipple No Spring 303 Check Valve
BLC-14-15	1/4 inch Male to Male Brass Check Valve 15 psi
BLC-14-2	1/4 inch Male to Male Brass Check Valve 2 psi
BLC-14	1/4 inch Male to Male Brass Check Valve No Spring
BLC-18MF-10	1/8 inch Male to Female Brass Check Valve 10 PSI
BLC-18MF-2	1/8 inch Male to Female Brass 2 PSI Check Valve
BLC-18MF	1/8 inch Male to Female No Spring Check Valve
BLC-18MF-SS-10	1/8 inch Male to Female 303 Stainless Steel 10 psi Check Valve
BLC-18MF-SS-2	1/8 inch Male to Female 303 Stainless Steel 2 psi Check Valve
BLC-18MF-SS	1/8 inch Male to Female 303 Stainless Steel No Spring Check Valve
BLC-14MF-15	1/4 inch Male to Female Brass Check Valve 10 PSI
BLC-14MF-2	1/4 inch Male to Female Brass 2 PSI Check Valve
BLC-14MF	1/4 inch Male to Female No Spring Check Valve
BLC-14MF-15-SS	1/4 inch Male to Female 303 Stainless Steel 15 psi Check Valve
BLC-14MF-2-SS	1/4 inch Male to Female 303 Stainless Steel 2 psi Check Valve
BLC-14MF-SS	1/4 inch Male to Female 303 Stainless Steel No Spring Check Valve
BLC-18FM-10	1/8 inch Female to Male Brass Check Valve 10 PSI

SKU		Description
BLC-18FM-2	1/8 inch Female to Male Brass Check Valve 2 PSI	
BLC-18FM	1/8 inch Female to Male Brass Check Valve No Spring	
BLC-18FM-10-SS	1/8 inch Female to Male 303 Stainless Check Valve 10 PSI	
BLC-18FM-2-SS	1/8 inch Female to Male 303 Stainless Check Valve 2 PSI	
BLC-18FM-SS	1/8 inch Female to Male 303 Stainless Check Valve No Spring	
BLC-14FM-15	1/4 inch Female to Male Brass Check Valve 15 PSI	
BLC-14FM-2	1/4 inch Female to Male Brass Check Valve 2 PSI	
BLC-14FM	1/4 inch Female to Male Brass Check Valve No Spring	
BLC-14FM-15-SS	1/4 inch Female to Male 303 Stainless Check Valve 15 PSI	
BLC-14FM-2-SS	1/4 inch Female to Male 303 Stainless Check Valve 2 PSI	
BLC-14FM-SS	1/4 inch Female to Male 303 Stainless Check Valve No Spring	

SBCV 2500 SERIES



Brass Ball check valves

Rated at 2500 PSI

Sizes and flow direction

1/4 MNPT by 1/4 MNPT

1/4 MNPT by 1/4 FNPT,

1/4 Male Flare by 1/4 Male Flare. Brass ball checks have 3 selections of seals, Buna, EPDM, or Viton,

Cracking pressure 1-5 PSI or over 5 PSI or No spring

303 Stainless Steel Ball Check Valve

1/4 MNPT by 1/4 MNPT

Product ID	Inlet	Outlet	Spring	Seal
SBVC-4M4M-1-B	1/4 MNPT	1/4 MNPT	1-5 PSI Crack Pressure	Buna

SBCV 2000 SERIES



Ball check valves are available in brass maximum operating pressure of 2000 PSI. 1/2MNPT or 3/4 FNPT. 1/2 MNPT has seals of Buna/FKM/EPDM, and FKM only for 3/4 valves. Electroless nickel plating is available. Overall cracking pressure is between 1-5 PSI standard. 1/2 Male unit offered in less than 1, or more than 5 PSI. Both units are available without springs.

Par Number	Description	Seals	Opening pressure	Material
SPCV2000 8M8M-V-5	1/2 MNPT by 1/2 MNPT	Viton FKM	Over 5 PSI	Brass
SPCV2000 8M8M-E-1-NP	1/2 MNPT by 1/2 MNPT	EPDM	Less than 1 PSI	Brass Electroless Nickel plate
SPCV2000 8M8M-B-NS	1/2 MNPT by 1/2 MNPT	Buna	N/A	Brass
SPCV2000-12M12M-V-1 to 5	3/4 FNPT by 3/4 FNPT	Viton FKM	Opening between 1 to 5 PSI	Brass

EVCK SERIES- ANTI SIPHON VALVE



Our EVCK Series Anti-Siphon Ball Check Valves for gasoline applications These Brass valves are available 1/4 NPTF by 1/4, 5/16 or 3/8 Barb, 1/4 NPTF by 1/4 or 3/8,

45 % Male Flare, 1/4 NPTF by 1/4 NPTF and 1/4 NPTF by 1/4 NPTF Female. These 1/4 valves offer a 30 GPH flow at -1.5 PSI

The 3/8 NPTF threads offer a flow of 50 GPH at -1.5 PSI. The sizes are 3/8 Male NPTF by 3/8, 1/2 or 5/8 Hose Barb. 3/8 Male NPTF by 3/8 Male Flare 45%, 3/8 NPTF both ends, and a 3/8 Male NPTF by 3/8 NPTF Female threads.

1/2 Inch connections offer a 75 GPH Flow Rate at -1.5 PSI. Sizes are 1/2 Male NPTF by 3/8 or 1/2 Hose Barb or 1/2 Male NPTF both ends that is available only in brass.

Available in Brass or Aluminium (except Flare fittings) with 300 Stainless Steel ball seats, ball and springs.

SKU	Description
EVCK-4M	1/4 inch Male by 1/4 inch Male Ball Check Valve
EVCK-4M4B-B	1/4 inch Male by 1/4 inch Barb Ball Check Valve
EVCK-4M4B-AL	1/4 Inch Male by 1/4 inch Barb Ball Check Valve Aluminum
EVCK-4M5B	1/4 inch Male by 5/16 inch Barb Ball Check Valve
EVCK-4M6B	1/4 inch Male by 3/8 inch Barb Ball Check Valve
EVCK-4M4F	1/4 inch Male by 1/4 inch Female Ball Check Valve
EVCK-6M	3/8 inch Male by 3/8 inch Male Ball Check Valve
EVCK-6M6B	3/8 inch Male by 3/8 inch Barb Ball Check Valve
EVCK-6M8B	3/8 inch Male by 1/2 inch Barb Ball Check Valve
EVCK-6M10B	3/8 inch Male by 5/8 inch Barb Ball Check Valve
EVCK-6M6F	3/8 inch Male by 3/8 inch Female Ball Check Valve
EVCK-8M	1/2 inch Male by 1/2 inch Male Ball Check Valve (brass only)
EVCK-8M6B-AL	1/2 inch Male by 3/8 inch Barb Ball Check Valve (aluminum only)
EVCK-8M8B	1/2 inch Male by 1/2 inch Barb Ball Check Valve (Brass Only)



CMCV SERIES-VALVED COMPRESSION FITTINGS

The CMCV Series Brass Ball Check Valves are compression fittings. This series has Tube OD of 1/8 inch, 1/4 inch, and 3/8 inch. Male NPT thread sizes of 1/8 inch and 1/4 inch are available. In addition, the working pressure for the 1/8 inch tube OD is 400 psi, for the 1/4 inch it is 300 psi, and for the 3/8 inch, it is 200 psi. Furthermore, the temperature range is -65° F to 250°F at maximum operating pressures.

SKU	Description
CMCV-14C2M	1/4 inch by 1/8 inch NPT 3 psi Brass Compression Check Valve
CMCV-18C2M	1/8 inch Brass 3 psi by 1/8 inch NPT Brass Compression Check Valve
CMCV-2M14C	1/8 inch NPT by 1/4 inch Brass S 3 psi Brass Compression Check Valve
CMCV-2M18C	1/8 inch NPT by 1/8 inch Brass 3 psi Brass Compression Check Valve
CMCV-38C4M	3/8 inch Brass 3 psi by 1/4 inch NPT Brass Compression Check Valve
CMCV-4M38C	1/4 inch NPT by 3/8 inch Brass 3 psi Brass Compression Check Valve

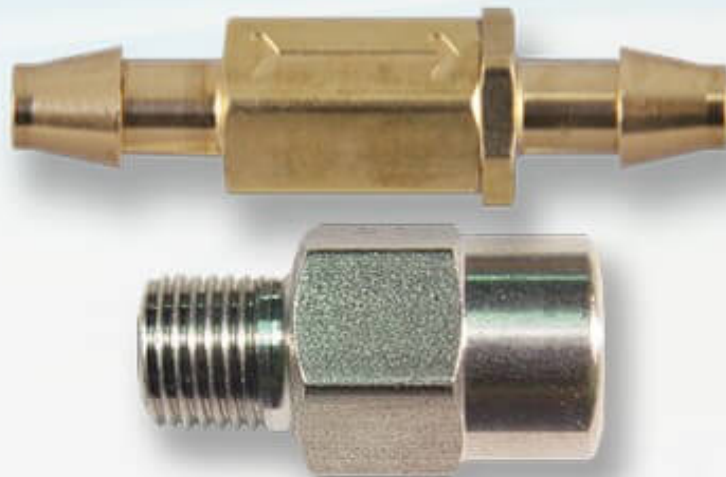
BCV SERIES



The BCV .187 flow thru Series is a Brass Ball Check Valve, with inlet and outlet sizes of 1/4 inch MNPT both ends, 1/4 inch Male Flare both ends. or a 1/4 MNPT to 1/4 FNPT flow only. This Check Valve has no elastomers to create a seal. It will have a positive seal only at high back pressure, so some leakage may bi-pass the seat in low-pressure applications. The cracking pressure on the 302 Stainless Steel spring is 1 psi (standard), 3.7, 5, 10, 14 and 18 psi. Maximum operating pressure is 2500 psi and the maximum operating temperature is 250° F.

The .280 flow thru series is available in 1/4 or 3/8 inch Male and Female NPT threads, and sealing materials are Buna, EPDM or Fluoroelastomer. The cracking pressure on the 302 Stainless Steel spring is 1/2 psi, 1 (standard), 3, 6, 10, 30, 40, 55 and 70 psi. The maximum operating pressure is 3000 psi and the maximum operating temperature is 250° F for Buna seals. These Check Valves are designed for high press applications up to 3000 PSI.

SKU		Description
BCV-14F	1/4 inch FNPT by 1/4 inch FNPT Ball Check Valve	
BCV-14FM	1/4 inch FNPT by 1/4 inch MNPT Ball Check Valve	
BCV-14M	1/4 inch MNPT by 1/4 inch MNPT Ball Check Valve	
BCV-14MF	1/4 inch MNPT by 1/4 inch FNPT Ball Check Valve	
BCV-38F	3/8 inch FNPT by 3/8 inch FNPT Ball Check Valve	
BCV-38M	3/8 inch MNPT by 3/8 inch MNPT Ball Check Valve	



METAL PISTON CHECK VALVES

METAL PISTON CHECK VALVES

Pneuline offers Metal Piston Check Valves perfect for Industrial applications, Power plants, and High-temperature services. Metal Piston Check Valves are Gravitational closure and quick closing.

CLCV SERIES - BRASS CHECK VALVES



The CLCV Series Brass Check Valves have 10-32 inch ports, a Nitrile seal, and a Stainless Steel spring. It permits flow in only one direction and is used for air and hydraulics. The input psi is 300 maximum. The crack pressure is 1/2 psi and the temperature range is 32° F to 230° F. The 1/8-inch valve has a maximum input pressure of 1000 psi. Otherwise, all other attributes are the same as the 10-32 inch valve.

SKU	Description
CLCV-10F10F	January 6, 1900
CLCV-10F10M	10-32 Female to Male Brass Poppet Check Valve
CLCV-10M10M	10-32 Male to Male Brass Poppet Check Valve
CLCV-10M10F	10-32 Male to Female Brass Poppet Check Valve
CLCV-18F	1/8 inch Female to Female Brass Poppet Check Valve

BPCV SERIES



The BPCV Series Brass Piston Check Valves are available in inlet and outlet sizes of 1/4 inch, 1/8 inch, and 3/16 inch barbs. Seal options are Buna-N, EPDM and Viton®. Spring materials are Hastelloy and Stainless Steel but the valve is also available without a spring. The maximum operating pressure is 125 psi. The flow rate is 2.5 SCFM at 50 psi.

SKU	Description
BPCV-2	1/8 inch Barb Brass Piston Check Valve
BPCV-2B-E1	1/8 inch Barb EPDM Piston Check Valve 1 psi
BPCV-5	5/16 Barb Piston Check Valve

PSCV SERIES



The PSCV Series Brass or Stainless Steel Piston Check Valves ensures a positive bubble-tight seal. They have a cracking pressure of 1 psi, a maximum pressure of 500 psi, and a maximum working temperature of 250° F. The standard unit is Brass with a 302 Stainless Steel spring and Steel retainer. Optional springs of 3, 5, 9, 15, 20, 25 psi. Also available in a 316 Stainless Steel body (shown) with a Hastelloy® spring. 1, 3, 15, and 25 psi. Seals available are Buna, EPDM, or FKM.

SKU	Description
PSCV-12F	1/2 FNPT Brass Piston Check Valve with Buna Seal
PSCV-14F	1/4 FNPT Brass Piston Check Valve with Buna Seal
PSCV-14FM	1/4 FNPT 1/4 MNPT Brass Piston Check Valve
PSCV-14M	1/4 MNPT Brass Piston Check Valve
PSCV-18F	1/8 FNPT Brass Piston Check Valve
PSCV-18FM	1/8 FNPT 1/8 MNPT Brass Piston Check Valve
PSCV-18M	1/8 MNPT Brass Piston Check Valve
PSCV-34F	3/4 FNPT Brass Piston Check Valve
PSCV-38F	3/8 FNPT Brass Piston Check Valve
PSCV-38FM	3/8 FNPT 3/8 MNPT Brass Piston Check Valve
PSCV-18F-SS	1/8 FNPT 316 Stainless Steel Piston Check Valve
PSCV-18FM-SS	1/8 FNPT 1/8 MNPT 316 Stainless Steel Piston Check Valve
PSCV-34F-SS	3/4 FNPT 316 Stainless Steel Piston Check Valve



PLASTIC CHECK VALVES

PLASTIC CHECK VALVES

Plastic check valves are used for a diverse range of applications. Transportation, chemical, car wash systems, water applications, pools and spas, medical equipment, and biopharmaceutical applications. The types of valves are various for the application. Diaphragm valves, duckbill valves, poppet valves, ball & spring known as ball checks, and Self-closing valves. Inline valves come in a number of thread and barb sizes, and for medical devices requiring luers, ISO 594 and 80369-7 and bond-in tubing sizes.



CARTRIDGE CHECK VALVES

CARTRIDGE CHECK VALVES

A Cartridge Valve is used to allow flow in one direction while stopping oil/ pressure in the opposite direction.



CRV SERIES - CARTRIDGE INSERT VALVES

These Cartridge Insert Valves can be installed into tubing lines or glued into manifolds. The optional housing materials are Nylon, Polypropylene, Acrylic, Acetal, PVDF, and Polycarbonate. Springs are 316 Stainless Steel or Hastelloy® (1/2 psi). O-Rings are of Buna-N, EPDM, FKM, Silicone and Kalrez. Available sizes are 1/4", 5/16", 3/8", 1/2", 5/8" and 3/4" OD. Standard crack pressure for all valves except 3/4" OD is 3" H₂O 0.1 psi, 5 psi, or 1.5 psi.

SKU	DESCRIPTION
CRV-12-11-PPB	1/2" Polypropylene / Buna Seals 11 psi Insert Valve
CRV-14-10PPE	1/4" Polypropylene / EPDM 10 psi Insert Valve
CRV-14-3-PPE	1/4" Polypropylene / EPDM 3 psi Insert Valve
CRV-14-PB-.5	1/4" Polypropylene / Buna .5 psi Insert Valve
CRV-14-PB-1	1/4" Polypropylene / Buna 1 psi Insert Valve
CRV-14-PB-1.5	1/4" Polypropylene / Buna 1.5 psi Insert Valve
CRV-14-PB-2	1/4" Polypropylene / Buna 2 psi Insert Valve
CRV-14-PE-.1	1/4" Polypropylene / EPDM .1 psi Insert Valve
CRV-14-PV-.1	1/4" Polypropylene / FKM .1 psi Insert Valve
CRV-14-PV-.5	1/4" Polypropylene / FKM .5 psi Insert Valve
CRV-14-PV-1	1/4" Polypropylene / FKM 1 psi Insert Valve
CRV-14-PV-10	1/4" Polypropylene / FKM 10 psi Insert Valve
CRV-14-PV-2	1/4" Polypropylene / FKM 2 psi Insert Valve
CRV-14-PV-5	1/4" Polypropylene / FKM 5 psi Insert Valve
CRV-38-2-PPV	3/8" Polypropylene / FKM 2 psi Insert Valve
CRV-38-PB-7.5 WC	3/8" Polypropylene / Buna 7.5 WC Insert Valve
CRV-38-PPB-1	3/8" Polypropylene / Buna 1 psi Insert Valve
CRV4-1/10-NB	1/4" 1/10 Nylon / Buna Insert Valve
CRV4-1/2H-PPV	1/4" 1/2# Hastelloy® Polypropylene / FKM O-Ring Insert Valve
CRV4-10PPE	1/4" 10# Polypropylene / EPDM Insert Valve
CRV4-4PPB	1/4" 4# Polypropylene / Buna Insert Valve
CRV-4-P-V-.5	1/4" Polypropylene / FKM .50 psi Insert Valve
CRV-4-P-V-1	1/4" Polypropylene / FKM 1 psi Insert Valve
CRV-4-PV-6WC	1/4" Polypropylene / FKM 6 inch WC Insert Valve
CRV-4-WP-V-.25	1/4" Polypropylene / FKM .25 psi Insert Valve
CRV-4-WP-V-.5	1/4" Polypropylene / FKM .50 psi Insert Valve
CRV532-14PC	5/32" 14# Polycarbonate Insert Valve
CRV-532-2.5PC	5/32" 2.5# Polycarbonate Insert Valve
CRV-532-2PC	5/32" 2# Polycarbonate Insert Valve
CRV532-4 P	5/32" 4# Polycarbonate Insert Valve



DIAPHRAGM CHECK VALVES

DIAPHRAGM CHECK VALVES

Check Valves: Diaphragm Check Valves
Pneuline 100% Leak Tests all MPV Series Check Valves in-house.



MPV-L SERIES | MEDICAL GRADE LUER
CHECK VALVES

Our MPV Luer Series Medical Grade Plastic Check Valves are manufactured, assembled, produced, 15 psi tested, and pre-packaged in a Class 7 Cleanroom environment

Check valves Made of Polypropylene, Polycarbonate, Radiation-Stable Polycarbonate, and Kynar 720®.

4 Main Connector Options: Male Inlet Luer with Rotating Collar to Female Luer, Male Inlet Rotating Collar to Male Rotating Collar, Female Inlet Luer Lock to Female Luer Lock, Female Inlet Luer Lock to Male Slip, Barb to ***

Diaphragm Options: Silicone
Flow Direction: Inlet to Outlet

***Custom Options: These Luers can be manufactured to fit with any of our Barb Connectors on the opposing end.
Barb Size options: 1/8 inch, 3/16 inch, 1/4 inch, 5/16 inch, 3/8 inch

SKU	Description
MPV-FLL-PC-S	IN: Female Luer OUT: Female Luer
MLLR-PC-S	IN: Male Luer OUT: Male Luer w/Rotating Collar
FLL-MLLR-PC-S	IN: Female Luer OUT: Male Luer w/ Rotating Collar
MLLR-FLL-PC-S	IN: Male Luer Out: Female Luer



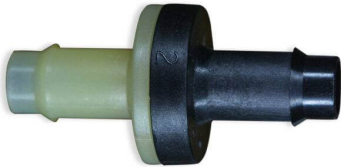
MPV SERIES | FOOD & BEVERAGE GRADE
CHECK VALVES

Plastic check valves molded at our facility are made from NSF 51/62 Approved materials, used for food and beverage applications. Our valves do not have grease or oil, like other diaphragm valves on the market. Ideal for contact with Food, Beverage, Water and Laboratory applications. Housings are molded from materials include POM -Celcon, M90® and PVDF, Arkema-Kynar 720®. The diaphragm options are EPDM, Santoprene™, or FDA Viton® disks. Sizes we offer include 1/8, 3/16, 1/4, 5/16, and 3/8 barbed valves.

[Download The Flyer](#)

	Flow (l/h)	Crack Pressure
MPV-2B-AC-FDAViton	1/8 Barbed Acetal with FDA Viton .020	

		Flow (l/h)	Crack Pressure
MPV-2B-AC-S	1/8 Barbed Acetal with Santoprene		
MPV-2B-AC-E	1/8 Barbed Acetal with EPDM	50.79	.007
MPV-3B-AC-FDA Viton	3/16 Barbed Acetal with FDA Viton .020		
MPV-3B-AC-S	3/16 Barbed Acetal with Santoprene		
MPV-3B-AC-E	3/16 Barbed Acetal with EPDM	50.79	.007
MPV-4BH-AC-FDA Viton	1/4 Barbed, Acetal, High Flow with FDA Viton .030		
MPV-4BH-AC-S	1/4 Barbed Acetal,High Flow with Santoprene		
MPV-4BH-AC-E	1/4 Barbed Acetal,High Flow with EPDM	26.28	.001
MPV-5B-AC-FDA Viton	5/16 Barbed, Acetal, High Flow with FDA Viton .030		
MPV-5B-AC-S	5/16 Barbed, Acetal, High Flow with Santoprene .030		
MPV-5B-AC-E	5/16 Barbed, Acetal, High Flow with EPDM .030	26.28	.001
MBV-6B-AC-FDA Viton	3/8 Barbed, Acetal, High Flow with FDA Viton .030		
MBV-6B-AC-S	3/8 Barbed, Acetal, High Flow with Santoprene .030		
MBV-6B-AC-E	3/8 Barbed, Acetal, High Flow with EPDM .030	26.28	.001

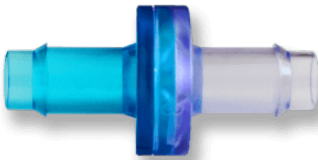


MPV SERIES | AUTOMOTIVE GRADE CHECK VALVES

Pneuline Supply manufactures Plastic Check Valves that are ideal for Automotive applications. Inlets are made of either Natural Nylon or Glass-Filled Natural Nylon. Outlets are made of either Black Nylon or Glass-Filled Black Nylon. The Barbed connectors are available in 1/8-inch, 3/16 inch, and 1/4-inch Standard Flow or 1/4-inch, 5/16 inch, and 3/8 inch High Flow. Diaphragms are made of either Fluorosilicone or EPDM. Customer-specific unique laser part marking is available for identifiers such as Part number sequencing, Lot number, or Company name.

[Download Our Flyer](#)

SKU	Description	Flow l/h	Crack Pressure
MPV-2B-NE	1/8 Barb Nylon / EPDM Check Valve	50.79	.007
MPV-2B-NF	1/8 Barb Nylon / Fluorosilicone Check Valve	62.79	.007
MPV-3B-NE	3/16 Barb Nylon / EPDM Check Valve	50.79	.007
MPV-3B-NF	3/16 Barb Nylon / Fluorosilicone Check Valve	62.79	.007
MPV-3B-PE	3/16 Barb Polypropylene / EPDM Check Valve	50.79	.007
MPV-4B-HKE	1/4 Barb Hi-Flow PVDF / EPDM Check Valve	26.28	.001
MPV-4B-NE	1/4 Barb Hi-Flow Nylon / EPDM Check Valve	50.79	.007
MPV-4B-NF	1/4 Barb Nylon / Fluorosilicone Check Valve	62.79	.007
MPV-5B-NE	5/16 Barb Hi-Flow Nylon / EPDM Check Valve	26.28	.001
MPV-5B-NF	5/16 Barb H-Flow Nylon / Fluorosilicone Check Valve	20.57	.001
MPV-5B-R530-E	5/16 Barb High-Flow Glass-Filled Nylon / EPDM Check Valve	26.28	.001
MPV-6B-NE	3/8 Barb High-Flow Nylon / EPDM Check Valve	26.28	.001
MPV-6B-NF	3/8 Barb Hi-Flow Nylon / Fluorosilicone Check Valve	20.57	.001
MPV-6B-R530-E	3/8 Barb High-Flow Glass-Filled Nylon / EPDM Check Valve	26.28	.001



MPV SERIES | MEDICAL GRADE CHECK VALVES

MPV Series Medical Grade Check Valves are manufactured and tested in a Class 7 Cleanroom environment making them ideal for medical applications. All cleanroom check valves are tested in our cleanroom environments at 15 PSI. Resin options include Nylon, Polypropylene, Polycarbonate, Radiation-stable Polycarbonate, and Kynar® 720. Other custom resins are available at the customer’s request. Sizes Available: 3/16 inch, 5/16 inch, and 3/8 inch high flow. Diaphragms are made of Silicone USP Class VI or FDA Viton®. Our custom molding options allow for customer specific needs or requirements which include resin options as well as diaphragm options.

[Download the MPV Series Flyer](#)

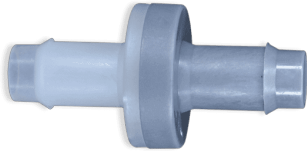
SKU	Description
MPV-2B-NS	1/8 Barb Nylon / FDA Silicone Check Valve
MPV-2B-PCS	1/8 Barb Polycarbonate / Natural FDA Silicone Check Valve
MPV-3B-PCS	3/16 Barb Polycarbonate / Silicone .020 VI Check Valve
MPV-4B-KS	1/4 Barb Standard PVDF/ Silicone Check Valve
MPV-6B-KS	3/8 Barb PVDF / USP Class VI Silicone Check Valve
MPV-6B-PCRS	3/8 Barb Polycarbonate / Silicone USP class VI Check Valve

CIS SERIES



This is a non-barbed Check Valve with a white tubing port inlet and clear tubing port outlet. The body is made of Acrylic with a blue Silicone diaphragm. This check valve is pressure-rated at 45 psi. The port sizes are both .130" and will accommodate 1/16" ID soft Silicone tubing as well as other tubing of 1/8" and 3/32" ID. It is manufactured in an ISO Class 8 Cleanroom and is Gamma, E-beam, and EtO sterilizable. This valve is made of Class VI approved materials, it is ultrasonically welded and is 100% inline tested for backflow and weld leaks.

SKU	Description
CIS-6383	Check Valve .130 port Acrylic/Silicone .29CP



MPV SERIES | INDUSTRIAL GRADE CHECK VALVES

MPV Series Plastic Diaphragm Check Valves are Manufactured by Pneuline Supply. One-way valves are used for Ozone, pools, spas, printing, ink jet applications. Wound therapy, air mattresses, printing, ink jet applications, Vacuum applications, corrosive liquids. We are the exclusive producers of PVDF: Kynar 720 (R) Valves with FFKM, Kalrez 4079 Diaphragms.

[Download Our Flyer](#) for information on our body & diaphragm options.

SKU	Description	Flow (l/h)	Crack Pressure
MPV-2B-KK	1/8 Barb PVDF / Kalrez® Check Valve	43.17	.011
MPV-2B-KV	1/8 Barb PVDF / FKM Check Valve	68.09	.006
MPV-2B-NF	1/8 Barb Nylon / Fluorosilicone Check Valve	62.79	.007
MPV-2B-NV	1/8 Barb Nylon / FKM Check Valve	68.09	.006
MPV-3B-AF	3/16 Barb Acetal / Fluorosilicone Check Valve	62.79	.007
MPV-3B-KV	3/16 Barb PVDF / FKM Check Valve	68.09	.006
MPV-3B-NF	3/16 Barb Nylon / Fluorosilicone Check Valve	62.79	.007
MPV-3B-NV	3/16 Barb Nylon / FKM Check Valve	68.09	.006
MPV-3B-PF	3/16 Barb Polypropylene / Fluorosilicone Check Valve	62.79	.007
MPV-3B-PV	3/16 Barb Polypropylene / FKM Check Valve	68.09	.006
MPV-4B-HKK	1/4 Barb Hi-Flow PVDF / Kalrez Check Valve	10.82	.001
MPV-4B-HKV	1/4 Barb Hi-Flow PVDF / FKM Check Valve	35.75	.001
MPV-4B-HNF	1/4 Barb Hi-Flow Nylon / Fluorosilicone Check Valve	20.57	.001
MPV-4B-HNV	1/4 Barb Hi-Flow PVDF / FKM Check Valve	35.75	.001
MPV-4B-KV	1/4 Barb Standard Flow PVDF / FKM Check Valve	68.09	.006
MPV-4B-NF	1/4 Barb Nylon / Fluorosilicone	62.79	.007
MPV-4B-NV	1/4 Barb Nylon / FKM Check Valve	68.09	.006
MPV-4B-PF	1/4 Barb Polypropylene / Fluorosilicone Check Valve	62.79	.007
MPV-4B-PV	1/4 Barb Polypropylene / FKM Check Valve	68.09	.006

SKU	Description	Flow (l/h)	Crack Pressure
MPV-5B-AF	5/16 Barb Acetal / Fluorosilicone Check Valve	20.57	.001
MPV-5B-KK	5/16 Barb PVDF / Kalrez® Check Valve	10.82	.001
MPV-5B-KV	5/16 Barb PVDF / FKM Check Valve	35.73	.001
MPV-5B-NF	5/16 Barb Nylon / Fluorosilicone Check Valve	20.57	.001
MPV-5B-NV	5/16 Barb Nylon / FKM Check Valve	35.75	.001
MPV-6B-KV	3/8 Barb PVDF /FKM Check Valve	35.75	.001
MPV-6B-NF	3/8 Barb Nylon / Fluorosilicone Check Valve	20.57	.001
MPV-6B-NV	3/8 Barb Nylon / FKM Check Valve	35.75	.001

CSP SERIES - POLYETHYLENE CHECK VALVES



The CSP Series Check Valves have a Polyethylene housing with a Neoprene disc for the 1/4-inch size and a Polyethylene disc for the 3/8-inch size. The maximum pressure for these check valves is 20 psi.

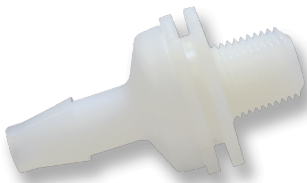
SKU	Description
CSP-38	3/8 inch to 9/16 inch ID Polypropylene Check Valve



BBCV SERIES

The BBCV Series Check Valve has a Male Slip Luer with 30 psi back pressure and 1/4 psi inlet cracking pressure. This series comes in ABS or Polycarbonate housing, both with Silicone Discs.

SKU	Description
BBCV-MLFL-ABS	Male Luer by Female Luer ABS Check Valve .25 psi Crack
BBCV-MLFL-01-ABS	Male Luer by Female Luer ABS Check Valve .01 psi Crack
BBCV-MLML-ABS	Male Luer by Male Luer ABS Check Valve .25 psi Crack



CMKV SERIES

The CMKV Series Plastic Check Valves are 1/8 inch Male NPT by Barb sizes of 1/8 inch, 3/16 inch, 1/4 inch, and 3/8 inch. The flow is from thread to barb. Material / Disc combinations are available in PVDF with FKM, Polypropylene with FKM, Polycarbonate with Neoprene, Polycarbonate with Silicone, Nylon with Silicone, and Nylon with Neoprene.

SKU	Description
CMKV-18B	1/8 MNPT by 1/8 Barb PVDF/FKM Check Valve
CMKV-14B-NS	1/8 MNPT by 1/4 Barb Nylon/Silicone Check Valve
CMKV-316B	1/8 MNPT by 3/16 Barb PVDF/FKM Check Valve



VC-IG SERIES

The VC-IG Series Plastic Check Valves have housing molded of Polysulfone or Polypropylene with either a POM or Silicone disc. The cracking pressure for these units is .8 H²O or .028 psi. The 10-32 inch units have a cracking pressure of 10 H²O or .36 psi. These check valves were made to be used in low-pressure applications. Reverse flow at 1 psi is available as follows: Polypropylene with Silicone: .20 SCIM, Polysulfone with POM 2.98 SCIM, Polysulfone with POM 1.00 SCIM R2, Polysulfone with Silicone .20 SCIM, and Polysulfone with Silicone .06 SCIM 10-32 inch Female ports only. Maximum pressure is 10 psi excluding the 10-32 inch port which is rated for 75 psi.

SKU	Description
VC-IG-1032F-PSS	1032 Female PS Silicon Check Valve
VC-IG-1B-PPS	1/16 Barb PP Silicone Check Valve
VC-IG-1B-PSC R2	1/16 Barb PS Celcon® Check Valve
VC-IG-1B-PSS	1/16 Barb PS Silicone Check Valve
VC-IG-1S-PPS	1/16 Shaft PP Silicone Check Valve
VC-IG-1S-PSC	1/16 Shaft PS Celcon® Check Valve
VC-IG-1S-PSC R2	1/16 Shaft PS Celcon® Check Valve
VC-IG-1S-PSS	1/16 Shaft PS Silicone Check Valve
VC-IG-2B-PPS	1/8 Barb PP Silicone Check Valve
VC-IG-2B-PSC R2	1/8 Barb PS Celcon® Check Valve
VC-IG-2B-PSS	1/8 Barb PS Silicone Check Valve

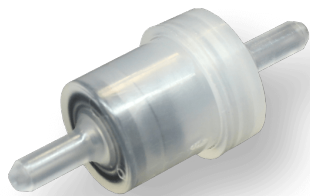


DUCKBILL CHECK VALVES

DUCKBILL CHECK VALVES

Pneuline Supply offers several different duckbill check valve options. Duckbill check valves are usually used in the medical industry, for example in situations where backflow is a main concern.

CNV SERIES



The CNV Series Check Valve is made of Polypropylene and is available in three sizes for 1/16 inch, 5/32 inch, or 1/8 inch ID tubing. The 1/16-inch ID tubing has either a 3-inch water column or an 8-inch water column opening pressure. The 8 inch water column is available with an EPDM or ECH duckbill. The 3-inch water column is offered with only an EPDM duckbill. The 1/8-inch size has a 3-inch water column with an EPDM duckbill. The 5/32-inch size has a 3-inch water column with an EPDM duckbill. A 3-inch water column equals 1/10 psi, and an 8 inch water column equals 1/3 psi. The maximum pressure for this check valve is 30 psi and the temperature range is from 35° F to 150° F.

SKU	Description
CNV-16S-PPEP-3	1/16 inch ID EPDM Duckbill Check Valve 3" water column
CNV-16S-PPEP-8	1/16 inch ID EPDM Duckbill Check Valve 8" water column
CNV-16S-PPEPC-8	1/16 inch ID ECH Duckbill Check Valve 8" water column
CNV-18S-PPEP	1/8 inch ID EPDM Duckbill Check Valve 3" water column
CNV-532S-PPEP-3	5/32 inch ID EPDM Duckbill Check Valve 3" water column

CDV SERIES



This is a non-barbed **Acrylic or Polycarbonate Check Valve** with a Silicone duck bill. This is a normally open, one-way check valve. It prevents backflow leakage with minimal pressure. The ends of the ports measure .134 to accommodate 1/8" ID tubing. These fittings are also available with male and female Luer Locks.

SKU	Description
CDV-125	1/8 inch ID Acrylic Luer Duckbill Check Valve
CDV-125MLL	1/8 inch ID to Male Luer Lock Acrylic Duckbill Check Valve
CDV-125-PC	1/8 inch ID Polycarbonate Duckbill Check Valve
CDV-18	1/8 inch ID Tubing Acrylic Duckbill Check Valve
CDV-FL-125	1/8 inch ID to Female Luer Lock Acrylic Duckbill Check Valve
CDV-FLL125	Female Luer Lock by .125
CDV-FLLML	Female Luer Lock to Male Slip Luer Acrylic Duckbill Check Valve

SKU	Description
CDV-FLLMLL	Female Luer Lock to Male Luer Lock Acrylic Duckbill Check Valve
CDV-ML	1/8 inch ID Male Luer Acrylic Duckbill Check Valve



QCD SERIES - LUER DUCKBILL CHECK VALVES

The QCD Series Luer Check Valves are made of Polycarbonate and have a Silicone duck bill. The low cracking pressure is 0.433 psi, which determines when the component starts to open. The OD sizes are 5/64 inch, 7/64 inch, and 9/64 inch. Also available with female and male Luer Locks.

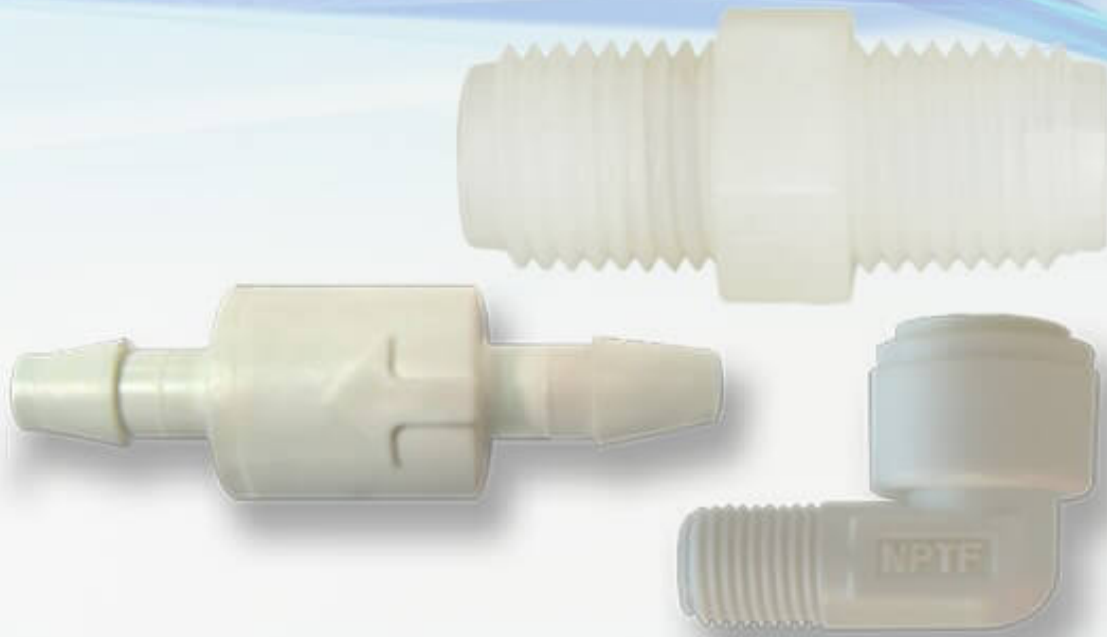
SKU	Description
QCD-564	5/64 inch OD Tubing Polycarbonate Luer Check Valve
QCD-764	7/64 inch OD Tubing Polycarbonate Luer Check Valve
QCD-964	9/64 inch OD Tubing Polycarbonate Luer Check Valve
QCD-FM	Female by Male Luer Lock Polycarbonate Check Valve



ASD SERIES

These ASD Series single barbed enlarging duckbill Check Valves are available in several materials such as Nylon (N), Polypropylene (PP), or Polycarbonate (PC) housing. These Check Valves have a Silicone diaphragm. The available barb sizes are 1/8 inch by 3/16 inch and 3/16 inch by 1/8 inch.

SKU	Description
ASD-2B	1/8 Barb
ASD-2B3B	1/8 Barb by 3/16 Barb
ASD-3B	3/16 Barb
ASD-3B2B	3/16 Barb by 1/8 Barb



PLASTIC BALL CHECK VALVES

PLASTIC BALL CHECK VALVES

Plastic ball valves simple designs reduce the need for maintenance and energy needs.
The ball inside automatically moves from the flow path to block it.

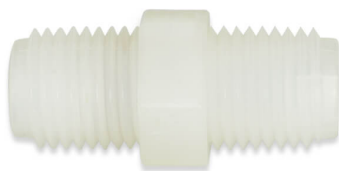
DCE SERIES



The DCE Series is a rigid male Check Valve elbow made of Acetal that is NSF 51® certified and meets NSF 61® requirements. The available male threads are 1/8 inch, 1/4 inch, and 3/8 inch. OD tubing sizes are 5/32 inch, 3/16 inch, 1/4 inch, 5/16 inch, 3/8 inch, and 1/2 inch. The working pressure at 77° F is 232 psi, and at 158° F it is 145 psi. The working temperature range is from 32° F to 158° F. It can be used for compressed air, inert gases, water, and other fluids.

SKU	Description
DCE-2M-14	1/8 MNPT by 1/4 OD Push-in Elbow Spring-loaded Check Valve
DCE-4M-14	1/4 MNPT by 1/4 OD Push-to Connect Elbow Check Valve
DCE-6M-14	3/8 MNPT by 1/4 OD Push-to Connect Elbow Check Valve

CVK SERIES - MALE CHECK VALVES



The CVK Series are male-by-male Check Valves made of natural PVDF. It has a 316 Stainless Steel spring and ball Viton® O-ring. Other O-ring options are EPDM and Fluorosilicone (blue). These check valves have a 1-2.5 psi cracking pressure with a maximum operating pressure of 220 psi and a maximum working temperature of 180°F. Available with a Hastelloy® spring and PTFE ball. Available Male NPT thread sizes are: 1/8 inch, 1/4 inch, 3/8 inch, and 1/2 inch.

SKU	Description
CVK-2M	1/8 inch NPT Check Valve PVDF
CVK-4M	1/4 NPT Check Valve PVDF
CVK-6M	3/8 inch NPT Check Valve PVDF
CVK-6M-HPTFE	3/8 inch M Check Valve PVDF, Hastelloy®/PTFE/FKM
CVK-8M	1/2 inch NPT Check Valve PVDF
CVK-8M-HPTFE	1/2 inch M Check Valve PVDF, Hastelloy®/PTFE/FKM

MCV SERIES - CHECK VALVES



The MCV Series Check Valve housings are available in various materials: White Nylon is standard, with Black Nylon optional; Natural Polypropylene is standard with Black Polypropylene optional. Black PVDF is also available. Different colors can be specially formulated. O-ring Seals are Buna-N, EPDM, Viton®, and Silicone. The standard spring is 302 Stainless Steel with 316 Stainless Steel ball. The Standard barb inlet and outlet sizes are for 1/8 inch, 3/16 inch, and 1/4 inch ID tubing. The outlet side is available with a 1/8 Male NPT or 1/4 Male NPT.

The maximum operating pressure is 125 psi. and the maximum operating temperature is 140° F. PVDF is sold with PTFE seals and a Hastelloy Springs.

Spring Options:

- No Spring
- 1/2 psi - 302 Stainless
- 1 psi - 302 Stainless
- 2 psi - 302 Stainless
- 3 psi - 302 Stainless

MCV SERIES

Pneuline Part Number	Size	Body	Seal	PSI
MCV-4B-PPE-1	1/4 (4B)	Polypropylene	EPDM	1 PSI
MCV-4B-NV-1/2	1/4 (4B)	Nylon	Viton ®	1/2 PSI
MCV-4B-NV-1	1/4 (4B)	Nylon	Viton ®	1 PSI
MCV-4B3B-NB-2	1/4 (4B) by 3/16 (3B)	Nylon	Buna	2 PSI
MCV-3B-PPV-3	3/16 (3B)	Polypropylene	Viton ®	3 PSI
MCV-3B-PPV-1/2	3/16 (3B)	Polypropylene	Viton ®	1/2 PSI
MCV-3B-PPV-1	3/16 (3B)	Polypropylene	Viton ®	1 PSI
MCV-3B-PPE-2	3/16 (3B)	Polypropylene	EPDM	2 PSI
MCV-3B-PPE-1/2	3/16 (3B)	Polypropylene	EPDM	1/2 PSI
MCV-3B-PPE-1	3/16 (3B)	Polypropylene	EPDM	1 PSI
MCV-3B-NV-1	3/16 (3B)	Nylon	Viton ®	1 PSI
MCV-3B-NV-2	3/16 (3B)	Nylon	Viton ®	2 PSI
MCV-3B4B-PPV-3	3/16 (3B) by 1/4 (4B)	Polypropylene	Viton ®	3 PSI
MCV-3B4B-PPE-3	3/16 (3B) by 1/4 (4B)	Polypropylene	EPDM	3 PSI
MCV-2B-PPV-2	1/8 (2B)	Polypropylene	Viton ®	2 PSI
MCV-2B-PPV-1/2	1/8 (2B)	Polypropylene	Viton ®	1/2 PSI
MCV-2B-PPE-3	1/8 (2B)	Polypropylene	EPDM	3 PSI
MCV-2B-PPE-2	1/8 (2B)	Polypropylene	EPDM	2 PSI
MCV-2B-PPE-1/2	1/8 (2B)	Polypropylene	EPDM	1/2 PSI
MCV-2B-PPE-1	1/8 (2B)	Polypropylene	EPDM	1 PSI

MCV-2B-PPB-2	1/8 (2B)	Polypropylene Buna	2 PSI
MCV-2B-NV-1/2	1/8 (2B)	Nylon Viton ®	1/2 PSI
MCV-2B-NV-1	1/8 (2B)	Nylon Viton ®	1 PSI
MCV-2B-NB-1	1/8 (2B)	Nylon Buna	1 PSI
MCV-2B4B-PPV-2	1/8 (2B) by 1/4 (4B)	Polypropylene Viton ®	2 PSI
MCV-2B4B-PPE-1/2	1/8 (2B) by 1/4 (4B)	Polypropylene EPDM	1/2 PSI
MCV-2B2M-PPV-2	1/8 (2B) 1/8 MNPT	Polypropylene Viton ®	2 PSI
MCV-4B4B-PPV-1	1/4 (4B)	Polypropylene Viton ®	1 PSI



POPPET CHECK VALVE

POPPET CHECK VALVES

Poppet check valves offer an easy way to control the timing and quantity of the flow of gas or vapor.



PCVM SERIES

The PCVM series is a push-in acetal poppet check valve, see available sizes and PSI options below.

SKU	DESCRIPTION
PCVM-4	1/4 Push-to-Connect Polypropylene Check Valve 2.75 psi
PCVM-4-2M	1/4 Push-to-Connect by 1/8 MNPT Check Valve .75 psi
PCVM-4-3	1/4 Push-to-Connect Polypropylene 2.75 psi
PCVM-4-5	1/4 Push-to-Connect Polypropylene Check Valve 5 psi
PCVM-4PP	1/4 Push-to-Connect Polypropylene Check Valve .3 psi
PCVM-6	3/8 Push-to-Connect Polypropylene Check Valve .3 psi

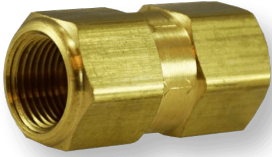


NCV CHECK VALVE SERIES

The NCV Series Nickel-Plated Brass Poppet Check Valve has options of Buna-N, EPDM or FKM seals. The operating pressure is 0 to 125 psi and the flow rate ranges from 2.5 to 9.5 scfm. Input and output port sizes are 10-32 inch UNF and 1/16 inch Barb.

SKU	Description
NCV-10F10F	10-32 Female to Female Nickel-Plated Poppet Check Valves
NCV-10F10M	10-32 Female to Male Nickel-Plated Poppet Check Valves
NCV-10F1B	10-32 Female 1/16 inch Barb Nickel-Plated Poppet Check Valves
NCV-10M10F	10-32 Male to Female Nickel-Plated Poppet Check Valves
NCV-10M1B	10-32 Male 1/16 inch Barb Nickel-Plated Poppet Check Valves
NCV-1B1B	1/16 inch Barb to 1/16 inch Barb Nickel-Plated Poppet Check Valves

PPCV SERIES



The PPCV Series Brass Poppet Check Valve has inlet sizes of 1/8, 1/4 inch, 3/8 inch, 1/2 inch, and 3/4 inch Female NPT threads and 3/8 inch and 1/2 inch Male NPT threads. Outlet sizes are 1/4 inch, 3/8 inch, 1/2 inch, and 3/4 inch, 1 Inch Female NPT threads. End body options are 1/4 inch and 3/8 inch Male Flare, and 1/4 inch Female Flare. Seal options are Buna-N, EPDM and Viton®. The cracking pressure on the 302 Stainless Steel spring is 1 psi (standard). Maximum operating pressure is 500 PSI for the 1/8 size and 1200 PSI for all the other sizes. The maximum operating temperature is 180° F. Two sizes of valves, the 3/8 FNPT and the 1-inch FNPT are available in 303 stainless.

SKU	Description
PPCV-18M	1/8 inch MNPT Brass Poppet Check Valve
PPCV-14MFL	1/4 Male Flare to 1/4 Male Flare Brass Poppet Check Valve
PPCV-18M14MFL	1/8 inch MNPT to 1/4 Male Flare Brass Poppet Check Valve
PPCV-14MFL18M	1/4 Male Flare to 1/8 MNPT Brass Poppet Check Valve
PPCV-14MFL18M-NP	1/4 Male Flare to 1/8 MNPT Nickel Plated Brass Poppet Check Valve
PPCV-14F	1/4 inch Female Brass Poppet Check Valve
PPCV-14F-1-V	1/4 inch Female Brass Poppet Check Valve <1 psi FKM Seals
PPCV-14F14MFL	1/4 FNPT to 1/4 Male Flare Brass Poppet Check Valve
PPCV-38MFL	3/8 Male Flare Brass Poppet Check Valve
PPCV-38MF	3/8 MNPT to 3/8 FNPT Brass Poppet Check Valve
PPCV-38F	3/8 FNPT to 3/8 FNPT Brass Poppet Check Valve
PPCV-12M38F	
PPCV-12F	1/2 inch Female Brass Poppet Check Valve
PPCV-12MF	1/2 inch Male 1/2 inch Female Brass Poppet Check Valve
PPCV-34F	3/4 inch Female Brass Poppet Check Valve
PPCV-34MF	3/4 inch Male 3/4 inch Female Brass Poppet Check Valve



FSPV SERIES - POPPET CHECK VALVES

The FSPV Series Poppet Check Valves come in Black PVDF, Black Polypropylene, and White Polypropylene with a choice of Buna-N, EPDM, Viton®, or Kalrez® seal. The standard spring is 302 Stainless Steel with a cracking pressure of 1/3 psi. Optional springs of 1 or 7 psi are available. These high-flow valves can be used in pressures up to 125 psi. Hastelloy spring is optional. The inlet and outlet sizes are Female NPT 1/4 inch, 3/8 inch, 1/2 inch, and 3/4 inch, and Male NPT size of 1/2 inch.

SKU	Description
FSPV-12F	1/2 FNPT Poly Poppet Check Valve
FSPV-12F12M	1/2 FNPT by 1/2 MNPT Poly Poppet Check Valve
FSPV-12M12M	1/2 MNPT by 1/2 MNPT Poly Poppet Check Valve
FSPV-12M-HV	1/2 MNPT Valve Hastelloy® FKM Poppet Check Valve
FSPV-14F	1/4 FNPT Poly FKM 302 1 psi Poppet Check Valve
FSPV-14F-.3E-WP	1/4 FNPT White Poly EPDM Seals 1/3 psi Poppet Check Valve
FSPV-14F-HV-1	1/4 FNPT Poly FKM Hastelloy® 1 psi Poppet Check Valve
FSPV-34F	3/4 FNPT Poly FKM Disk 1/3 psi Poppet Check Valve
FSPV-34F-11WC	3/4 FNPT Poly FKM 11" C 1/3 psi Poppet Check Valve
FSPV-34F-5WC	3/4 FNPT Poly FKM 5" WC Poppet Check Valve
FSPV-34F-HV	3/4 FNPT Poly FKM Disk Hastelloy® 1/3 psi Poppet Check Valve
FSPV-34F-HV-.7	3/4 FNPT Poly FKM O-Ring Hastelloy® .7 psi Poppet Check Valve
FSPV-34F-HV-1.5	3/4 FNPT Poly FKM O-Ring Hastelloy® 1.5 psi Poppet Check Valve
FSPV-34F-HV-11WC	3/4 FNPT Poly FKM O-Ring Hastelloy® 11 WC Poppet Check Valve
FSPV-38F	3/8 FNPT Poly FKM 302 1/3 psi Poppet Check Valve
FSPV-38F-E-9	3/8 FNPT Poly FKM 302 1 psi Poppet Check Valve
FSPV-38F-HV-2	3/8 FNPT Poly Hastelloy® FKM #2 O-Ring Poppet Check Valve

SPC SERIES



The SPC Series Plastic are PVC, Polypropylene, Nylon Plastic Check Valves and have 302 Stainless Steel springs, 316 Stainless Steel balls, and EPDM seals. 1 psi spring is standard with optional 1/3, 3, 5, 7, 10, or 12-pound springs. Available in barbs, MNPT, FNPT, Push-in connections with multiple combinations. Hastelloy spring, PTFE ball, and FKM O-rings for aggressive environments are available.

SKU	Description
SPC-2B2B-PB-12	1/8 inch Barb Valve Polypropylene Buna 12 psi
SPC-2B-PP-E-10	1/8 inch Barb Polypropylene EPDM 10 psi
SPC-2B-V-12	1/8 inch Barb Viton® with 12 Spring
SPC-2C2C	1/8 inch Compression by 1/8 inch Compression
SPC-2C2M-H-V	1/8 inch Compression by 1/8 inch MNPT Hastelloy® FKM
SPC-2F2F	1/8 inch Female by 1/8 inch Female
SPC-2F2F-HV	1/8 inch Female NPT with Hastelloy® FKM Seals
SPC-2M2M	1/8 inch Male by 1/8 inch Male
SPC-2M4F-E	1/8 inch NPT to 1/4 inch Female EPDM Seals
SPC-4B2M-HV-12	1/4 inch Barb to 1/8 inch MNPT Hastelloy® FKM 12 psi
SPC-4B2M-HV-3	1/4 inch Barb to 1/8 inch MNPT Hastelloy® FKM 3psi
SPC-4B4B	1/4 inch Barb by 1/4 inch Barb
SPC-4B4B-HV	1/4 inch Barb Hastelloy® FKM .5 psi
SPC-4B4B-V-12	1/4 inch Barb FKM with 12 spring
SPC-4B4M-BKPP-HV-1/3	1/4 inch Barb 1/4 inch Male Black Polypropylene FKM Hastelloy® 1/3 psi
SPC-4B4M-VH	1/4 inch Barb by 1/4 inch MNPT FKM/Hastelloy®
SPC-4B-V-12	1/4 inch Barb Viton® with 12 psi Spring
SPC-4B-V-H-1	1/4 inch Barb PVC FKM PTFE/Hastelloy® 1 psi
SPC-4C2M-H-V	1/4 inch Compression by 1/8 inch MNPT Hastelloy® FKM
SPC-4C4C	1/4 inch Compression by 1/4 inch Compression
SPC-4C4M-K-H-V	1/4 inch Compression 1/4 inch Male PVDF Hastelloy® FKM
SPC-4F4F	1/4 inch Female by 1/4 inch Female
SPC-4F4F-H-V	1/4 inch F by 1/4 inch Female Hastelloy® FKM
SPC-4F4F-K-H-V	1/4 inch Female PVDF Hastelloy® FKM
SPC-4F4FPP-H-V-3	1/4 inch Female Polypropylene Hastelloy® FKM 3 psi
SPC-4F4M-H-V-90PP	1/4 inch Female by 1/4 inch NPT Polypropylene Hastelloy®/ FKM 90 Micron
SPC-4F4M-K-H-V	1/4 inch Female by 1/4 inch M PVDF Hastelloy® FKM
SPC-4M4B-HV	1/4 inch Male 1/4 inch Barb FKM Hastelloy®
SPC-4M4F-H-V	1/4 inch Male by 1/4 inch Female Hastelloy® FKM 1 psi
SPC-4M4F-K-H-V	1/4 inch Male by 1/4 inch Female PVDF Hastelloy® FKM

SKU	Description
SPC-4M4M	1/4 inch Male by 1/4 inch Male
SPC-4M4M-H-V	1/4 inch Male by 1/4 inch Male Hastelloy® FKM 1 psi
SPC-4M4P	1/4 inch Male 1/4 inch Push-in
SPC-4M6B	1/4 inch Male 3/8 inch Barb
SPC-4P2M-H-V	1/4 inch Push-in by 1/8 inch Male Hastelloy®
SPC-4P4P	1/4 inch Push-in by 1/4 inch Push-in
SPC-4P4P-HV	1/4 inch Push-in Hastelloy® FKM
SPC-4P4P-SS-HV	1/4 inch Push-in Stainless Steel Ball Hastelloy® FKM
SPC-4P6B-H-V-7	1/4 inch Push-in 3/8 inch Barb Hastelloy® FKM 7
SPC-4PI2M-H-V	1/4 inch Push-in by 1/8 inch Male Hastelloy®/ FKM
SPC-4S4P	1/4 inch Stem by 1/4 inch Push-in
SPC-6B6B	3/8 inch Barb by 3/8 inch Barb
SPC-6B-F-1/3	3/8 inch Barb Fluoroelastomer 1/3 psi
SPC-6P4F-H-V	3/8 inch Push-in by 1/4 inch Female Hastelloy®/ Viton®
SPC-6P4M-H-V	3/8 inch Push-in by 1/4 inch Male Hastelloy®/ Viton®
SPC-6P-6B-H-V	3/8 inch Push-in 3/8 inch Barb Hastelloy® FKM 7 psi
SPC-6P-6B-H-V-R	3/8 inch Push-in 3/8 inch Barb Hastelloy® FKM 7 psi
SPC-6P6M-H-V RV1	3/8 inch Push-in by 3/8 inch Male Hastelloy®/ Viton®
SPC-6S6P	3/8 inch Stem by 3/8 inch Push-in
SPC-8B8B	1/8 inch Male by 1/8 inch Male



CCV SERIES - POPPET CHECK VALVES

The CCV Series are miniature Poppet Check Valves and Pressure Release Valves available with 1/8 inch Male NPT threads and 1/4 inch compression fittings. The NPT fittings are made of Polypropylene, Nylon, and ABS with O-rings made of Buna-N, EPDM, Viton®, Silicone, or fluorosilicone. The spring pressure is 20 psi. The compression fittings are made of Polypropylene with a .713 OD size.

SKU	Description
CCV-2M14C-1	1/8 MNPT by 1/4 Comp Polypropylene / EPDM 1 psi
CCV-2M14C-1.5	1/8 MNPT by 1/4 Comp Polypropylene / EPDM 1.5 psi
CCV-2M14C-3	1/8 MNPT by 1/4 Comp Polypropylene / EPDM 3 psi
CCV-2M14C-3-PPS	1/8 MNPT by 1/4 Comp Polypropylene / Silicone 3 psi
CCV-2M-3	1/8 MNPT by 1/8 MNPT Polypropylene / EPDM 3 psi
CCV-4C6M-3	1/4 Comp by 3/8 MNPT Polypropylene / EPDM 3 psi

SKU	Description
CCV-4M14C-1	1/4 MNPT by 1/4 Comp Polypropylene / EPDM 1 psi
CCV-4M-4	1/4 MNPT by 1/4 MNPT Polypropylene / EPDM 4 psi

MSV SERIES | SPRING-LOADED CHECK VALVES



Pneuline Supply, Inc. manufactures the MSV Series inline spring-loaded check valves in a class 8 clean room environment specifically for use in medical applications. Custom molding allows for customer-specific requirements which include resin options, connector variations, and O-ring selections. Available resin options include Polycarbonate, Radiation-stable Polycarbonate, and Kynar® 720 (PVDF). Other custom resins are available upon request. Barbed connectors are available in 1/8-inch, 3/16-inch, and 1/4-inch standard flow or 1/4-inch-high flow, 5/16-inch, and 3/8-inch. Springs are made of 316 Stainless Steel or Hastelloy® in .022 psi, .25 psi, .50 psi, 1 psi, 5 psi, or 10 psi. Passivated springs are available. O-ring options are Silicone USP class VI, Fluorosilicone, EPDM, Viton®, or Kalrez®. To make this product truly unique, we offer custom laser marking for identification purposes such as part number sequencing, lot numbers, or company name.

**Poppet and Piston are optional.*

[Download the MSV Series Flyer](#)

SKU	Description
MSV-2B-AC-6	1/8 Valve Acetal EPDM 6 PSI
MSV-2B-AC-E-.25	1/8 Valve Acetal EPDM .22
MSV-2B-AC-E-1	1/8 Valve Acetal EPDM 1 PSI
MSV-2B-AC-E-5	1/8 Valve Acetal EPDM 5 PSI
MSV-3BAC-.75V-41	3/16 Acetal .75 Viton with 41 micron
MSV-3B-AC-B-1	3/16 Valve Acetal Buna 1
MSV-3B-AC-E-1	3/16 Valve Acetal EPDM 1
MSV-3B-K720-1SS-V	3/16 Kynar 720 Valve Viton 1 PSI 316 SS
MSV-3B-K720-E-.5H	3/16 Kynar 720 Valve EPDM .5 Hastelloy®
MSV-3B-PC-E-.5	3/16 Barb PC EPDM 1/2 PSI
MSV-3B-PC-E-.75	3/16 Barb PC Valve EPDM .75
MSV-3B-PC-E-1	3/16 Barb PC EPDM 1PSI
MSV-3B-Rx2530-6WC-S	3/16 Barb RSPC Valve 6WC Silicone
MSV-4B-PC-S-.22PI	1/4 Valve Polycarb Silicone .22

SKU	Description
MSV-4B-PC-S-.5	1/4 Valve Polycarb Silicone .5
MSV-5B-Rx2530-6WC-S	5/16 Barb RSPC Spring Valve 6WC Silicone
MSV-6B-AC-.22 E	3/8 Valve Acetal .22 EPDM
MSV-6B-AC-E-1	3/8 Valve Acetal EPDM 1 PSI
MSV-6B-K720-E-1	3/8 Valve Kynar EPDM 1 PSI
MSV-6B-Rx2530-6WC-S	5/16 Barb RSPC Spring Valve 6WC Silicone



SELF-SEALING CHECK VALVES

SELF-SEALING CHECK VALVES

Our PSSV Series is a new addition to our check valve collection, these valves are used to shut out backflow in liquid and air applications.



PSSV SERIES

Our **PSSV Series, Self-sealing Check Valves**, are made from either Polycarbonate or Polypropylene housings with Barb connector sizes for 3/16 inch ID tubing or 5/16 inch ID tubing. The product is made in a class 7 clean room. The seal is a retractable silicone disk that prevents back-flow in several air and liquid applications making it an ideal option for the Medical Industry for air applications including respiratory, ventilator, bio-pharmaceutical. The product can also be used with fluid applications for the medical devices. Designed for pressures under 50 PSI. All material are compatible with Gamma Sterilization 6 Mrads, and ETO Sterilization.

Additional product materials are Radiation Stable Polycarbonate and PVDF. Optional sealing material is EPDM with qualifying volumes. Additional barb sizes, Male and Female Luer connections and Bond-in connections can be designed and provided with quantity volumes.

- *Open pressure is approximately .20 PSI*
- *Flow is 56.29 l/h*
- *Crack Pressure is .001 PSI*

[View our Flyer Here](#)

SKU	Description
PSSV-3B-PP	3/16 inch by 3/16 inch Polypropylene Barbed Self-Sealing Check Valve
PSSV-3B-PC	3/16 inch by 3/16 inch Polycarbonate Barbed Self-Sealing Check Valve
PSSV-5B-PP	5/16 inch by 5/16 inch Polypropylene Barbed Self-Sealing Check Valve
PSSV-5B-PC	5/16 inch by 5/16 inch Polycarbonate Barbed Self-Sealing Check Valve
PSSV-5B3B-PP	5/16 inch by 3/16 inch Polypropylene Barbed Self-Sealing Check Valve
PSSV-5B3B-PC	5/16 inch by 3/16 inch Polycarbonate Barbed Self-Sealing Check Valve



FLOW CONTROL VALVES

FLOW CONTROL VALVES

Flow Control Valves are perfect for your fluid applications. Whether it's throttling, regulating, or fine-tuning flow rates, they will get the job done.



REGULATORS

REGULATORS

Pneuline has regulators perfect for your flow control demands!



RAAW SERIES

RAAW Series is a 1/8" or 1/4" 4-port mini air Regulator made of glass-filled Nylon with Buna-N seals. The supply pressure is 250 psi with a standard operating range of 5 - 125 psi, 3 - 60 psi, and 3 - 20 psi. The temperature range is 40° F to 120° F. It has a 3-position non-rising adjustment knob which can be detached to make it tamper-resistant. Also, a tamper-proof cap is included. This unit is lightweight, panel-mountable and the relieving style is standard.



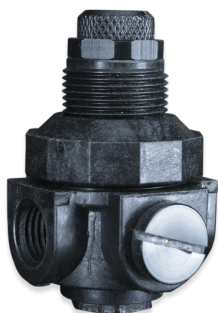
RP SERIES

This Pressure Regulator is made of NSF-approved Acetal with port sizes of 1/4" (R25) and 3/8" (R45). Both have 1/4" gauge port threads. The maximum supply pressure is 125 psi and the temperature range is 40° F to 125° F. The spring pressure ranges are 0-25 psi, 0-60 psi, and 0-125 psi. This Regulator is recommended for compressed air. The 1/4" regulator is relieving and the 3/8" is non-relieving.



NBR SERIES

The 2-way non-exhausting Air Regulator is made of Electroless Nickel Plated Brass with a small knurled knob and is panel mountable. The input port can be 10-32 male or female threads; 1/16", 3/32", and 1/8" Barb; 1/8" Female NPT or 1/4-20 Female threads. Also, the outlet port can be 10-32 male or female threads or 1/16", 3/32", or 1/8" Barb. The panel mount threads are 15/32-32. The maximum operating pressure is 5 to 80 psi and the maximum operating temperature is 180° F. 3-way exhausting is also available.



RWL SERIES

Water Pressure Regulator made of NSF-approved Thermoplastics with FDA-grade EPDM disc, Buna-N diaphragm, and seals. It has a straight-through or 90° inlet to outlet option and a clean-out plug on the bottom. The temperature range is 33° F to 150° F and the maximum operating pressure is 300 psi. The inlet and outlet sizes are 1/4" and the regulator can have either 2 or 4 outlets.

SKU	DESCRIPTION
RWL-2-14-125	2-1/4 ports 0- 125 psi Water Regulator
RWL-2-14-25	2-1/4 ports 0- 25 psi Water Regulator
RWL-2-14-60	2-1/4 ports 0- 60 psi Water Regulator
RWL-25	4-1/4 ports 0-25 psi Water Regulator
RWL-4-14-25	4 1/4 ports 0- 25 psi Water Regulator
RWL-4-14-60	4 1/4 ports 0- 60 psi Water Regulator
RWL-4-14-125	4 1/4 ports 125 psi Water Regulator



NRM REGULATOR SERIES

This non-relieving Regulator is made of NSF and FDA approved Acetal with Stainless Steel and food-grade EPDM elastomer. It has a 1/4" female NPT inlet and outlet ports. It can be used for potable and deionized water. There is an adjustable pressure knob. The maximum pressure is 150 psi and the temperature range is 35°F to 125°F. There is an available regulator for compressed air and non-potable water.

SKU	DESCRIPTION
NRM-10	1/4 FNPT Preset 3 psi, 0-10 range
NRM-25	1/4 FNPT Preset 15 psi, 0-25 range
NRM-50	1/4 FNPT Preset 40 psi, 5-50 range
NRM-125	1/4 FNPT Preset 50 psi, 5-125 range



RA SERIES

RA Series are precision relieving and non-relieving regulators made with a Polysulfone body and Acetal stem, Buna-n or EPDM seals and stainless steel springs. 150 PSI maximum input with a 20-turn adjustment allows pressure settings to 1 Inch WC. Available with threads of 10-32 Female or 1/8 inch FNPT. These regulators can be purchased in a low-profile preset design with pressure ranges of 3.5, 10, 30, 60, or 90 psi. . Factory preset tamper-proof regulators are also available in a low profile measuring only 1.75 inches high. Optional with a standard screwdriver slot adjustment. Used for robotics, medical equipment, and process control applications.

SKU	Description
RA-10-18F-K	Regulator 10 psi 1/8 inch NPT Knob
RA-18-10WK	Regulator 10 psi 1/8 inch NPT 0-10 Knob
RA-18-3.5WK	Regulator 10 psi 1/8 inch NPT 0-10 Knob
RA-18-30WK	Regulator 30 psi 1/8 inch NPT 0-30 Knob
RA-18-NR-10WOS	Regulator NR 10 psi 1/8 inch NPT 0-10 WOS
RA-30-1032-K-R	Regulator 30 psi 10-32 Ports Knob Relieving
RA-1032-3.5P	10-32 Female 3.5 psi Relieving
RA-1032-10P	10-32 Female 10 psi Relieving
RA-1032-30P	10-32 Female 30 psi Relieving



SKU	Description
RA-1032-60P	10-32 Female 60 psi Relieving
RA-1032-10P-SL-R	10-32 Female 10 psi with Screwdriver Slot, Relieving



RELIEF VALVES

RELIEF VALVES

Relief Valves distributed by Pneuline Supply, Inc. are Spring-Loaded Valves, typically with preset pressures. Available in various Plastics and Metals. Manual Bleed Valves, including Slide Valves, offer an easy solution for the release of excess pressure from a system.

ASAHI SERIES



These Lab valves for low pressure applications have an NSF61 PVC body with EPDM O rings. The lever handle provides precise fingertip control with a 90° turning radius. They have 1/4" NPT threads and hose barb tapers from 3/8" to 5/8". Rated for full vacuum, the pressure rating is 150 psi up to 120°F for many laboratories process control monitoring and fluid sampling uses. Also, these valves come in 7 configurations. They can be used for chemical processing, water, and wastewater. In addition, these valves are not FDA-compliant.

2WS SERIES



This easily mountable 2-way Stopcock is constructed from high-quality polypropylene and polyethylene, ensuring durability and reliability. It is designed to operate efficiently within a temperature range of 41°F to 104°F, making it suitable for various applications. Additionally, this stopcock can withstand a max pressure of 14.5 psi, providing robust performance under demanding conditions. In conclusion, its user-friendly design allows for quick and secure mounting, making it an ideal choice for residential and commercial use.



PPBN SERIES

The PPBN Series is an Electroless Nickel-plated Brass push-button Relief Valve that is corrosion-resistant. The operating pressure is 0 to 125 psi. Releases pressurized air at a rate of 100 in³ in 4 seconds. Available in NPT or UNF threads.

SKU	DESCRIPTION
PPBN-1032	10-32 Push Button Bleed Valve
PPBN-2M	1/8 NPT Push Button Bleed Valve
PPBN-4M	1/4 NPT Push Button Bleed Valve



TBVA SERIES

TBVA Series is a Brass Relief Valve with 1/8” male NPT threads and side exhaust. Maximum working pressure of 150psi.



VRV SERIES

This is a vent-to-atmosphere Relief Valve. It is an accurate design that offers repeatability and dependability. Cracking pressure is set and tested for accuracy. Male NPT threads in 1/4", 3/8", and 1/2" sizes. Maximum pressure is 200 psi. Made of Nickel-plated Brass, 303 Stainless Steel and Brass. An optional dust cover is available.

SKU	Description
VRV-14-10E-CAL	1/4 inch Male NPT 10 psi EPDM Cap Aluminum Relief Valve
VRV-14-10-NP	1/4 inch Male NPT 10 psi Nickel-Plated Relief Valve
VRV-12-90	1/2 inch Male NPT 90 psi Brass Relief Valve
VRV-38-30-303	3/8 inch Male NPT 30 psi 303 Stainless Steel Relief Valve



RA SERIES

RA Series are precision relieving and non-relieving regulators made with a Polysulfone body and Acetal stem, Buna-n or EPDM seals and stainless steel springs. 150 PSI maximum input with a 20-turn adjustment allows pressure settings to 1 Inch WC. Available with threads of 10-32 Female or 1/8 inch FNPT. These regulators can be purchased in a low-profile preset design with pressure ranges of 3.5, 10, 30, 60, or 90 psi. . Factory preset tamper-proof regulators are also available in a low profile measuring only 1.75 inches high. Optional with a standard screwdriver slot adjustment. Used for robotics, medical equipment, and process control applications.

SKU	Description
RA-10-18F-K	Regulator 10 psi 1/8 inch NPT Knob
RA-18-10WK	Regulator 10 psi 1/8 inch NPT 0-10 Knob
RA-18-3.5WK	Regulator 10 psi 1/8 inch NPT 0-10 Knob
RA-18-30WK	Regulator 30 psi 1/8 inch NPT 0-30 Knob
RA-18-NR-10WOS	Regulator NR 10 psi 1/8 inch NPT 0-10 WOS
RA-30-1032-K-R	Regulator 30 psi 10-32 Ports Knob Relieving
RA-1032-3.5P	10-32 Female 3.5 psi Relieving
RA-1032-10P	10-32 Female 10 psi Relieving
RA-1032-30P	10-32 Female 30 psi Relieving



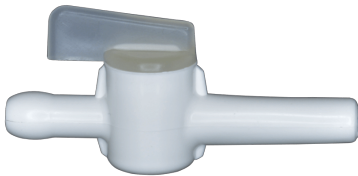
SKU	Description
RA-1032-60P	10-32 Female 60 psi Relieving
RA-1032-10P-SL-R	10-32 Female 10 psi with Screwdriver Slot, Relieving



STOPCOCKS

STOPCOCKS

MS SERIES



This is a miniature stopcock made of high-density polypropylene. The key turns easily so no lubricant is needed, eliminating blockage of the bores with grease. This is not for pressurized lines.

HFSC SERIES STOPCOCKS



4-way Stopcock is available in Polycarbonate, Acetal, Polyethylene, HDPE, Acrylic and Silicone. These Stopcocks are chemically resistant and not made with DEHP. Connection options include male luer slip, male luer lock, male luer with spin lock, rotating male luer lock, female luer lock, and tubing ports. Psi is 50, higher pressures are available on request.

SKU	DESCRIPTION
HFSC-4-MSFF-PC	4-Way Stopcock Male Slip by FF Polycarbonate
HFSC-4-FFF-PC	4-Way Stopcock FFF Polycarbonate
HFSC-4-FFM-PC	4-Way Stopcock FFM Polycarbonate
HFSC-4-FMM-PC	4-Way Stopcock FMM Polycarbonate
HFSC-4-FMF-PC	4-Way Stopcock FMF Polycarbonate
HFSC-4-MFF-PC	4-Way Stopcock MFF Polycarbonate
HFSC-4-MFM-PC	4-Way Stopcock MFM Polycarbonate
HFSC-4-MMF-PC	4-Way Stopcock MMF Polycarbonate
HFSC-4-MMM-PC	4-Way Stopcock MMM Polycarbonate
HFSC-4-MSFF-PC	4-Way Stopcock Male Slip by FF Polycarbonate



NEEDLE VALVES

NEEDLE VALVES

Needle Valve Products distributed by Pneuline Supply, Inc. have ports from 10-32 to 1 inch with a reduced thru hole size. A threaded tapered plunger allows precise regulation of flow. It is generally only capable of relatively low flow rates. They are adjustable to a flow of 0.025" diameter orifice. Our selection of Needle valves are made with bodies of Acetal, Aluminum, Brass, Nickel-Plated Brass, Nylon, Glass-Filled Nylon, Polypropylene, Glass-Filled Polypropylene, PVC and PVDF. O-Rings are Buna-N, Viton®, or EPDM. Max pressure for metal needle valves is 180 psi up to 10000 psi with temperature of -40°F to 200°F. Maximum pressure for plastics is 125 psi with a temperature range of 40°F to 120°F. Both

metal and plastic are available for panel mounting.



METAL NEEDLE VALVES

METAL NEEDLE VALVES

Pneuline Supply, Inc. offers Metal Needle Valves that have ports from 10-32 to 1 inch with a reduced thru hole size. A threaded tapered plunger allows precise regulation of flow. It is generally only capable of relatively low flow rates. They

are adjustable to a flow of 0.025" diameter orifice. Needle valves are made with bodies of Aluminum, Brass, or Nickel-Plated Brass. O-Rings are Buna-N, Viton®, or EPDM.
Max pressure for metal needle valves is 180 psi up to 10000 psi with temperature of -40°F to 200°F.

NVS SERIES



The compact design of this Brass Needle Valve allows for multiple configurations; straight or 90° elbow. It has a 500 psi rating and its maximum operating temperature is 180° F. The through hole diameter is .156. The stem seal is PTFE and the needle is available in Brass or Stainless Steel. The knob options are black-filled Polyester, yellow-filled polyester, or no knob. To enable panel mounting, a brass hex nut is supplied. The inlet sizes are 1/4" female NPT and 1/4" male and female NPT; the outlet size is 1/4" female NPT.

SKU	Description
NVS-4F	1/4 inch FNPT Inline Needle Valve
NVSA-4F	1/4 inch FNPT Right Angle Needle Valve
NVSA-4F4M	1/4 inch Male Inlet 1/4 Female Outlet Needle Valve

SPNV SERIES



Mini Brass 90° Needle Valve with an inlet of 1/8" male threads. Outlet sizes are female 10-32 threads, male 10-32 threads or 1/16", 1/8", and 3/32" barbs. Available seals are Buna-N, EPDM, and Viton®. The maximum operating pressure is 125 psi, maximum operating temperature is 180° F. Panel mount is standard. This Needle Valve is also available with female 10-32 UNF inlet and outlet threads. The barb sizes are the same as for the male Needle Valve. The black ABS knobs are standard, removable knobs.

SKU	Description
SPNV-10F10F	10-32F by 10-32F Needle Valve
SPNV-2M10F	1/8 MNPT In by 10-32 Female Out Needle Valve
SPNV-2M1B	1/8 MNPT In by 1/16 Barb Out Needle Valve
SPNV-10F2B	10-32 Female UNF In by 1/8 Barb Out Needle



MNV SERIES

Mini Brass 90° Needle Valve with an inlet of 10-32 male threads. Outlet sizes are female 10-32 threads, male 10-32 threads or 1/16", 1/8" and 3/32" barbs. Available seals are Buna-N, EPDM, and Viton®. The maximum operating pressure is 125 psi, maximum operating temperature is 180° F. Panel mount is standard.

SKU	Description
MNV-10M10F	10-32 Male inlet Female outlet Needle Valve
MNV-10F10M	10-32 Female inlet Male outlet Needle Valve
MNV-10F-10F	10-32 Female Nickel Needle Valve
MNV-18M10F	1/8 inch Male NPT 10-32 Female Needle Valve



FNV SERIES

The FNV Series Needle Valves are of Brass with 10-32 male taper threads or 1/8 inch NPT to a 10-32 Female port. 10-32 is available with a knurled knob. Buna seals (FKM Optional), 150 psi service. 1/8 inch NPT is Panel Mountable.

SKU	Description
FNV-10F10F	10-32 Male by Female Needle Valve
FNV-10M10F	10-32 Male Female Needle Valve
FNV-18M10F	1/8 MNPT by 10-32 Female Needle Valve



PNFC SERIES

Mini Brass 90° Needle Valve with an inlet of 10-32 male threads. Outlet sizes are female 10-32 threads, male 10-32 threads or 1/16", 1/8" and 3/32" barbs. Available seals are Buna-N, EPDM, and Viton®. The maximum operating pressure is 125 psi. Panel mount is standard.

SKU	Description
PNFC-10M10F	10-32 Taper Male by 10-32 Female Brass



VNAT SERIES

Nickel Plated Panel Mount Needle Valve with a 3° pin angle, 64 TPI for fine adjustment. Buna-N seal standard and it has a screwdriver slot for easy adjustment. Operating temperature -40° F to 200° F. The recommended filtration is 5 microns. Barbed fittings for flexible tubing.

SKU	Description
VNAT-16	1/16 inch Barbed Needle Valve
VNAT-18	1/8 inch Barbed Needle Valve
VNAT-1B-K-PM	1/16 inch Barbed NPB KNOB PM Needle Valve
VNAT-1B-S-PM	1/16 inch Barbed NPB Slotted with PM Needle Valve
VNAT-2B-K-PM	1/8 inch Barbed NPB KNOB with PM Needle Valve



PLASTIC NEEDLE VALVES

PLASTIC NEEDLE VALVES

have ports from 10-32 to 1 inch with a reduced thru hole size. A threaded tapered plunger allows precise regulation of flow. It is generally only capable of relatively low flow rates. They are adjustable to a flow of 0.025" diameter orifice.

Plastic Needle Valves are made with bodies of Acetal, Nylon, Glass-Filled Nylon, Polypropylene, Glass-Filled Polypropylene, PVC and PVDF. O-Rings are Buna-N, Viton®, or EPDM.

Maximum pressure for plastics is 125 psi with a temperature range of 40°F to 120°F. Both metal and plastic are available for panel mounting.



PNV SERIES

The PNV Series Needle Valves are PVC with EPDM Seals, Polypropylene with FKM Seals, or PVDF with PTFE Seals—maximum pressure of 125 psi. Standard 2.5-degree needle, others are available.

SKU	Description
PNV-2C	1/8 Compression Needle Valve
PNV-2F	1/8 Female Needle Valve
PNV-2M	1/8 Male Needle Valve
PNV-4B	1/4 Barb Needle Valve
PNV-4C	1/4 Compression Needle Valve
PNV-4F	1/4 Female Needle Valve
PNV-4M	1/4 Male Needle Valve
PNV-4P	1/4 Push-to-Connect Needle Valve
PNV-5B	5/16 Barb Needle Valve
PNV-6B	3/8 Barb Needle Valve
PNV-6P	3/8 Push-to-Connect Needle Valve
PNV-8B	1/2 Barb Needle Valve



NVC SERIES

The NVC Series Acetal Push-to-Connect Needle Valve is designed for precision and reliability. Featuring a nickel-plated needle, this valve ensures reliable performance and continuance in various applications. Additionally, the NVC Series offers an elbow configuration, providing flexibility and ease of installation in tight spaces. Whether you need a straight or elbow configuration, this needle valve is a great choice for your fluid control needs.

SKU	Description
NVC-04-MFL-FFL	1/4 inch Flare Male to Female Stainless Steel Needle Valve
NVC-4	1/4 inch OD Needle Valve
NVC-6	3/8 inch OD Needle Valve



DFV SERIES

DFV Series PBT Needle Valves are made standard with Nickel-Plated threads and stems with a PBT body that controls out but checks the flow back.

SKU		Description
DFV-14		1/4 by 1/4 Needle Valve
DFV-18		1/8 by 1/8 Needle Valve
DFV-38		3/8 by 3/8 Needle Valve
DFV-532		5/32 by 5/32 Needle Valve
DFV-316		3/16 by 3/16 Needle Valve