



DIAPHRAGM CHECK VALVES

DIAPHRAGM CHECK VALVES

Check Valves: Diaphragm Check Valves
Pneuline 100% Leak Tests all MPV Series Check Valves in-house.



MPV-L SERIES | MEDICAL GRADE LUER CHECK VALVES

Engineered for **critical medical and laboratory applications**, our **MPV Luer Series Medical Grade Plastic Check Valves** are **manufactured, assembled, and rigorously tested at 15 PSI in a certified Class 7 Cleanroom environment**, ensuring unmatched contamination control and reliability.

Ultra-Pure, High-Performance Materials Crafted from premium **Polypropylene, Polycarbonate, Radiation-Stable Polycarbonate, and Kynar® 720**, our check valves deliver **exceptional chemical resistance and durability** for demanding medical, pharmaceutical, and laboratory environments.

Precision-Designed for Sterile Applications Pre-packaged and produced under strict cleanroom conditions, these valves provide **consistent performance where purity matters most.**

4 Main Connector Options:

- Male Inlet Luer with Rotating Collar to Female Luer
- Male Inlet Rotating Collar to Male Rotating Collar
- Female Inlet Luer Lock to Female Luer Lock
- Female Inlet Luer Lock to Male Slip

Barb to ***

Diaphragm Options: Silicone

Flow Direction: Inlet to Outlet

****Custom Options: These Luers can be manufactured to fit with any of our Barb Connectors on the opposing end.*

Barb Size options: 1/8 inch, 3/16 inch, 1/4 inch, 5/16 inch, 3/8 inch

SKU	Luers	Body Material	Diaphragm
MPV-FLL-BODY-DIAPHRAGM	IN: Female Luer OUT: Female Luer	Polycarbonate Polypropylene Kynar®	Silicone USP Class VI
MPV-MLLR-BODY-DIAPHRAGM	IN: Male Luer OUT: Male Luer w/Rotating Collar	Polycarbonate Polypropylene Kynar®	Silicone USP Class VI
MPV-FLL-MLLR-BODY-DIAPHRAGM	IN: Female Luer OUT: Male Luer w/ Rotating Collar	Polycarbonate Polypropylene Kynar®	Silicone USP Class VI
MPV-MLLR-FLL-BODY-DIAPHRAGM	IN: Male Luer Out: Female Luer	Polycarbonate Polypropylene Kynar®	Silicone USP Class VI

Cleanroom Class 8 Production & Manufacturing Available



MPV SERIES | FOOD & BEVERAGE GRADE CHECK VALVES

High-Performance Plastic Check Valves - Pure, Reliable, and Built for Precision

Crafted from **NSF 51/62 Approved materials**, our plastic check valves are designed specifically for **food and beverage applications**, ensuring safety and compliance without the use of grease or oil—unlike traditional diaphragm valves.

- ✓ **Ideal for:** Food, beverage, water, and laboratory applications
- ✓ **Premium housing materials:** POM-Celcon, M90®, and PVDF (Arkema-Kynar 720®)
- ✓ **Diaphragm options:** EPDM, Santoprene™, and FDA Viton® disks
- ✓ **Available sizes:** 1/8", 3/16", 1/4", 5/16", and 3/8" barbed valves

Engineered for purity and performance, these valves meet the highest standards for critical applications.

[Download The Flyer](#)

SKU	Description	Body	Diaphragm
MPV-2B-Body-Diaphragm	1/8" Barbed Inline Check Valve Body Diaphragm	Acetal	FDA Viton® Silicone EPDM
MPV-3B-Body-Diaphragm	3/16" Barbed Inline Check Valve Body Diaphragm	Acetal	FDA Viton® Silicone EPDM
MPV-4BH-Body-Diaphragm	1/4" Barbed Hi-Flow Inline Check Valve Body Diaphragm	Acetal	FDA Viton® Silicone EPDM
MPV-5B-Body-Diaphragm	5/16" Barbed Hi-Flow Inline Check Valve Body Diaphragm	Acetal	FDA Viton® Silicone EPDM
MPV-6B-Body-Diaphragm	3/8" Barbed High-Flow Inline Check Valve Body Diaphragm	Acetal	FDA Viton® Silicone EPDM

MPV SERIES | AUTOMOTIVE GRADE CHECK VALVES



At **Pneuline Supply**, we craft high-performance **Plastic Check Valves** designed specifically for **automotive applications**—offering durability, efficiency, and reliable fluid control.

Versatile Material Options: Inlets: Choose from **Natural Nylon** or **Glass-Filled Natural Nylon** • Outlets: Available in **Black Nylon** or **Glass-Filled Black Nylon**

Optimized Flow Performance: Standard Flow: 1/8", 3/16", and 1/4" barbed connectors • **High Flow:** 1/4", 5/16", and 3/8" barbed connectors

Premium Diaphragm Choices: Fluorosilicone – Exceptional temperature & chemical resistance • **EPDM** – Reliable sealing and flexibility

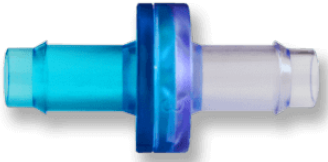
Custom Laser Part Marking: Tailor your valves with unique **part number sequencing, lot numbers, or company branding**, ensuring seamless identification and traceability.

Built for **precision, reliability, and customization**, these check valves meet the highest industry standards for automotive performance.

[Download Our Flyer](#)

SKU	Description	Body	Diaphragm
MPV-2B-Body-Diaphragm	1/8" Barbed Inline	Nylon	
	Check Valve Body	Glass-Filled Nylon	EPDM
	Diaphragm	Polypropylene Kynar®	Fluorosilicone
MPV-3B-Body-Diaphragm	3/16" Barbed Inline	Nylon	
	Check Valve Body	Glass-Filled Nylon	EPDM
	Diaphragm	Polypropylene Kynar®	Fluorosilicone
MPV-4BH-Body-Diaphragm	1/4" Barbed Hi-Flow	Nylon	
	Inline Check Valve	Glass-Filled Nylon	EPDM
	Body Diaphragm	Polypropylene Kynar®	Fluorosilicone
MPV-4B-Body-Diaphragm	1/4" Barbed Stand-Flow	Nylon	
	Inline Check Valve	Glass-Filled Nylon	EPDM
	Body Diaphragm	Polypropylene Kynar®	Fluorosilicone
MPV-5B-Body-Diaphragm	5/16" Barbed Hi-Flow	Nylon	
	Inline Check Valve	Glass-Filled Nylon	EPDM
	Body Diaphragm	Polypropylene Kynar®	Fluorosilicone

SKU	Description	Body	Diaphragm
MPV-6B-Body-Diaphragm	3/8" Barbed High-Flow Inline Check Valve Body Diaphragm	Nylon Glass-Filled Nylon Polypropylene Kynar®	EPDM Fluorosilicone



MPV SERIES | MEDICAL GRADE CHECK VALVES

Manufactured and rigorously tested in a **Class 7 Cleanroom**, our **MPV Series Medical Grade Check Valves** are built to meet the highest standards for **medical, laboratory, and bio-pharmaceutical applications**. Each valve undergoes **100% Leak Decay Testing** in our cleanroom environment, ensuring unmatched reliability and contamination control.

Premium Resin Options for Critical Applications

- **Nylon, Polypropylene, Polycarbonate, & Radiation-Stable Polycarbonate** - Ensuring durability and performance
- **Kynar® 720** - A trusted material for medical fluid handling
- **Custom resins are available** upon request for specialized needs

Optimized High-Flow Sizes, 3/16", 5/16", and 3/8" barbed valves, designed for superior flow control

USP Class VI & FDA-Compliant Diaphragm Choices

- **Silicone USP Class VI** - Ideal for medical-grade applications
- **FDA Viton®** - Reliable sealing and chemical resistance

Custom Molding for Tailored Solutions- We offer **fully customizable resin and diaphragm options** to meet unique customer requirements, ensuring precision engineering for specialized applications.

Built for **purity, performance, and customization**, the MPV Series delivers exceptional quality for critical environments.

[Download the MPV Series Flyer](#)

SKU	Description	Body	Diaphragm
-----	-------------	------	-----------

MPV-2B-Body-Diaphragm	1/8" Barbed Inline Check Valve Body Diaphragm	Nylon Polycarbonate USP Class VI Polypropylene Silicone Kynar®
MPV-3B-Body-Diaphragm	3/16" Barbed Inline Check Valve Body Diaphragm	Nylon Polycarbonate USP Class VI Polypropylene Silicone Kynar®
MPV-4B-Body-Diaphragm	1/4" Barbed Stand-Flow Inline Check Valve Body Diaphragm	Nylon Polycarbonate USP Class VI Polypropylene Silicone Kynar®
MPV-5B-Body-Diaphragm	5/16" Barbed Hi-Flow Inline Check Valve Body Diaphragm	Nylon Polycarbonate USP Class VI Polypropylene Silicone Kynar®
MPV-6B-Body-Diaphragm	3/8" Barbed High-Flow Inline Check Valve Body Diaphragm	Nylon Polycarbonate USP Class VI Polypropylene Silicone Kynar®
Cleanroom Class 8 Production and Manufacturing		

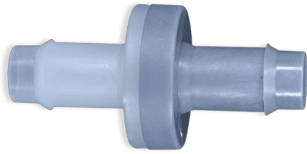
CIS SERIES



This is a non-barbed Check Valve with a white tubing port inlet and clear tubing port outlet. The body is made of Acrylic with a blue Silicone diaphragm. This check valve is pressure-rated at 45 psi. The port sizes are both .130" and will accommodate 1/16" ID soft Silicone tubing as well as other tubing of 1/8" and 3/32" ID. It is manufactured in an ISO Class 8 Cleanroom and is Gamma, E-beam, and EtO sterilizable. This valve is made of Class VI approved materials, it is ultrasonically welded and is 100% inline tested for backflow and weld leaks.

SKU	Description
CIS-6383	Check Valve .130 port Acrylic/Silicone .29CP

MPV SERIES | INDUSTRIAL GRADE CHECK VALVES



At **Pneuline Supply**, we manufacture **MPV Series Plastic Diaphragm Check Valves**, built for **exceptional performance** across diverse applications. Whether controlling **ozone, pools, spas, printing, inkjet systems, wound therapy, air mattresses, vacuum systems, or corrosive liquids**, these one-way valves ensure **smooth operation and uncompromising durability**.

Designed for High-Purity & Specialized Use Our exclusive **PVDF: Kynar® 720** valves—paired with **FFKM Kalrez® 4079 diaphragms**—deliver industry-leading chemical resistance and reliability, making them ideal for demanding environments.

Versatile & Proven Performance Trusted across **medical, industrial, and fluid-handling systems**, our valves excel in **corrosive, high-pressure, and controlled environments**, ensuring longevity and efficiency.

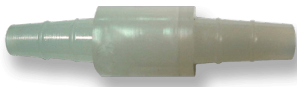
Upgrade to a **higher standard of precision and durability** with MPV Series Check Valves—engineered to perform when reliability matters most.

[Download Our Flyer](#)

SKU	Description	Body	Diaphragm
MPV-2B-Body-Diaphragm	1/8" Barbed Inline Check Valve Body Diaphragm	Kynar®	
		Nylon	Kalrez®
		Glass-Filled Nylon	FKM
		Acetal	Fluorsilicone
		Polypropylene	
MPV-3B-Body-Diaphragm	3/16" Barbed Inline Check Valve Body Diaphragm	Kynar®	
		Nylon	Kalrez®
		Glass-Filled Nylon	FKM
		Acetal	Fluorsilicone
		Polypropylene	
MPV-4B-Body-Diaphragm	1/4" Barbed Stand-Flow Inline Check Valve Body Diaphragm	Kynar®	
		Nylon	Kalrez®
		Glass-Filled Nylon	FKM
		Acetal	Fluorsilicone
		Polypropylene	
MPV-4BH-Body-Diaphragm	1/4" Barbed Hi-Flow Inline Check Valve Body Diaphragm	Kynar®	
		Nylon	Kalrez®
		Glass-Filled Nylon	FKM
		Acetal	Fluorsilicone
		Polypropylene	

SKU	Description	Body	Diaphragm
MPV-5B-Body-Diaphragm	5/16" Barbed Hi-Flow Inline Check Valve Body Diaphragm	Kynar®	
		Nylon	Kalrez®
		Glass-Filled Nylon	FKM
		Acetal	Fluorsilicone
MPV-6B-Body-Diaphragm	3/8" Barbed High-Flow Inline Check Valve Body Diaphragm	Polypropylene	
		Kynar®	
		Nylon	Kalrez®
		Glass-Filled Nylon	FKM
		Acetal	Fluorsilicone
		Polypropylene	

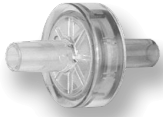
CSP SERIES - POLYETHYLENE CHECK VALVES



The CSP Series Check Valves have a Polyethylene housing with a Neoprene disc for the 1/4-inch size and a Polyethylene disc for the 3/8-inch size. The maximum pressure for these check valves is 20 psi.

SKU	Description
CSP-38	3/8 inch to 9/16 inch ID Polypropylene Check Valve

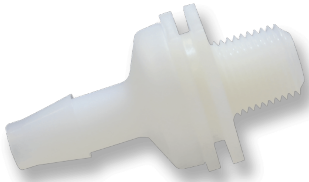
BBCV SERIES



The BBCV Series Check Valve has a Male Slip Luer with 30 psi back pressure and 1/4 psi inlet cracking pressure. This series comes in ABS or Polycarbonate housing, both with Silicone Discs.

SKU	Description
BBCV-MLFL-ABS	Male Luer by Female Luer ABS Check Valve .25 psi Crack
BBCV-MLFL-01-ABS	Male Luer by Female Luer ABS Check Valve .01 psi Crack
BBCV-MLML-ABS	Male Luer by Male Luer ABS Check Valve .25 psi Crack

CMKV SERIES



The CMKV Series Plastic Check Valves are 1/8 inch Male NPT by Barb sizes of 1/8 inch, 3/16 inch, 1/4 inch, and 3/8 inch. The flow is from thread to barb. Material / Disc combinations are available in PVDF with FKM, Polypropylene with FKM, Polycarbonate with Neoprene, Polycarbonate with Silicone, Nylon with Silicone, and Nylon with Neoprene.

SKU	Description
CMKV-18B	1/8 MNPT by 1/8 Barb PVDF/FKM Check Valve
CMKV-14B-NS	1/8 MNPT by 1/4 Barb Nylon/Silicone Check Valve
CMKV-316B	1/8 MNPT by 3/16 Barb PVDF/FKM Check Valve



VC-IG SERIES

The VC-IG Series Plastic Check Valves have housing molded of Polysulfone or Polypropylene with either a POM or Silicone disc. The cracking pressure for these units is .8 H²O or .028 psi. The 10-32 inch units have a cracking pressure of 10 H²O or .36 psi. These check valves were made to be used in low-pressure applications. Reverse flow at 1 psi is available as follows: Polypropylene with Silicone: .20 SCIM, Polysulfone with POM 2.98 SCIM, Polysulfone with POM 1.00 SCIM R2, Polysulfone with Silicone .20 SCIM, and Polysulfone with Silicone .06 SCIM 10-32 inch Female ports only. Maximum pressure is 10 psi excluding the 10-32 inch port which is rated for 75 psi.

SKU	Description
VC-IG-1032F-PSS	1032 Female PS Silicon Check Valve
VC-IG-1B-PPS	1/16 Barb PP Silicone Check Valve
VC-IG-1B-PSC R2	1/16 Barb PS Celcon® Check Valve
VC-IG-1B-PSS	1/16 Barb PS Silicone Check Valve
VC-IG-1S-PPS	1/16 Shaft PP Silicone Check Valve
VC-IG-1S-PSC	1/16 Shaft PS Celcon® Check Valve
VC-IG-1S-PSC R2	1/16 Shaft PS Celcon® Check Valve
VC-IG-1S-PSS	1/16 Shaft PS Silicone Check Valve
VC-IG-2B-PPS	1/8 Barb PP Silicone Check Valve
VC-IG-2B-PSC R2	1/8 Barb PS Celcon® Check Valve
VC-IG-2B-PSS	1/8 Barb PS Silicone Check Valve