

## PLASTIC CHECK VALVES

### PLASTIC CHECK VALVES

Plastic check valves are used for a diverse range of applications. Transportation, chemical, car wash systems, water applications, pools and spas, medical equipment, and biopharmaceutical applications. The types of valves are various for the application. Diaphragm valves, duckbill valves, poppet valves, ball & spring known as ball checks, and Self-closing valves. Inline valves come in a number of thread and barb sizes, and for medical devices requiring luers, ISO 594 and 80369-7 and bond-in tubing sizes.



# CARTRIDGE CHECK VALVES

## **CARTRIDGE CHECK VALVES**

A Cartridge Valve is used to allow flow in one direction while stopping oil/ pressure in the opposite direction.



## CRV SERIES - CARTRIDGE INSERT VALVES

These Cartridge Insert Valves can be installed into tubing lines or glued into manifolds. The optional housing materials are Nylon, Polypropylene, Acrylic, Acetal, PVDF, and Polycarbonate. Springs are 316 Stainless Steel or Hastelloy® (1/2 psi). O-Rings are of Buna-N, EPDM, FKM, Silicone and Kalrez. Available sizes are 1/4", 5/16", 3/8", 1/2", 5/8" and 3/4" OD. Standard crack pressure for all valves except 3/4" OD is 3" H<sub>2</sub>O 0.1 psi, 5 psi, or 1.5 psi.

SKU	DESCRIPTION
CRV-12-11-PPB	1/2" Polypropylene / Buna Seals 11 psi Insert Valve
CRV-14-10PPE	1/4" Polypropylene / EPDM 10 psi Insert Valve
CRV-14-3-PPE	1/4" Polypropylene / EPDM 3 psi Insert Valve
CRV-14-PB-.5	1/4" Polypropylene / Buna .5 psi Insert Valve
CRV-14-PB-1	1/4" Polypropylene / Buna 1 psi Insert Valve
CRV-14-PB-1.5	1/4" Polypropylene / Buna 1.5 psi Insert Valve
CRV-14-PB-2	1/4" Polypropylene / Buna 2 psi Insert Valve
CRV-14-PE-.1	1/4" Polypropylene / EPDM .1 psi Insert Valve
CRV-14-PV-.1	1/4" Polypropylene / FKM .1 psi Insert Valve
CRV-14-PV-.5	1/4" Polypropylene / FKM .5 psi Insert Valve
CRV-14-PV-1	1/4" Polypropylene / FKM 1 psi Insert Valve
CRV-14-PV-10	1/4" Polypropylene / FKM 10 psi Insert Valve
CRV-14-PV-2	1/4" Polypropylene / FKM 2 psi Insert Valve
CRV-14-PV-5	1/4" Polypropylene / FKM 5 psi Insert Valve
CRV-38-2-PPV	3/8" Polypropylene / FKM 2 psi Insert Valve
CRV-38-PB-7.5 WC	3/8" Polypropylene / Buna 7.5 WC Insert Valve
CRV-38-PPB-1	3/8" Polypropylene / Buna 1 psi Insert Valve
CRV4-1/10-NB	1/4" 1/10 Nylon / Buna Insert Valve
CRV4-1/2H-PPV	1/4" 1/2# Hastelloy® Polypropylene / FKM O-Ring Insert Valve
CRV4-10PPE	1/4" 10# Polypropylene / EPDM Insert Valve
CRV4-4PPB	1/4" 4# Polypropylene / Buna Insert Valve
CRV-4-P-V-.5	1/4" Polypropylene / FKM .50 psi Insert Valve
CRV-4-P-V-1	1/4" Polypropylene / FKM 1 psi Insert Valve
CRV-4-PV-6WC	1/4" Polypropylene / FKM 6 inch WC Insert Valve
CRV-4-WP-V-.25	1/4" Polypropylene / FKM .25 psi Insert Valve
CRV-4-WP-V-.5	1/4" Polypropylene / FKM .50 psi Insert Valve
CRV532-14PC	5/32" 14# Polycarbonate Insert Valve
CRV-532-2.5PC	5/32" 2.5# Polycarbonate Insert Valve
CRV-532-2PC	5/32" 2# Polycarbonate Insert Valve
CRV532-4 P	5/32" 4# Polycarbonate Insert Valve





# DIAPHRAGM CHECK VALVES

## DIAPHRAGM CHECK VALVES

Check Valves: Diaphragm Check Valves  
Pneuline 100% Leak Tests all MPV Series Check Valves in-house.



MPV-L SERIES | MEDICAL GRADE LUER  
CHECK VALVES

Engineered for **critical medical and laboratory applications**, our **MPV Luer Series Medical Grade Plastic Check Valves** are **manufactured, assembled, and rigorously tested at 15 PSI in a certified Class 7 Cleanroom environment**, ensuring unmatched contamination control and reliability.

**Ultra-Pure, High-Performance Materials** Crafted from premium **Polypropylene, Polycarbonate, Radiation-Stable Polycarbonate, and Kynar® 720**, our check valves deliver **exceptional chemical resistance and durability** for demanding medical, pharmaceutical, and laboratory environments.

**Precision-Designed for Sterile Applications** Pre-packaged and produced under strict cleanroom conditions, these valves provide **consistent performance where purity matters most**.

4 Main Connector Options:

- Male Inlet Luer with Rotating Collar to Female Luer
- Male Inlet Rotating Collar to Male Rotating Collar
- Female Inlet Luer Lock to Female Luer Lock
- Female Inlet Luer Lock to Male Slip

Barb to \*\*\*

**Diaphragm Options:** Silicone

**Flow Direction:** Inlet to Outlet

\*\*\*Custom Options: These Luers can be manufactured to fit with any of our Barb Connectors on the opposing end.

Barb Size options: 1/8 inch, 3/16 inch, 1/4 inch, 5/16 inch, 3/8 inch

SKU	Luers	Body Material	Diaphragm
MPV-FLL-BODY-DIAPHRAGM	IN: Female Luer	Polycarbonate	Silicone USP Class VI
	OUT: Female Luer	Polypropylene Kynar®	
MPV-MLLR-BODY-DIAPHRAGM	IN: Male Luer	Polycarbonate	Silicone USP Class VI
	OUT: Male Luer w/Rotating Collar	Polypropylene Kynar®	
MPV-FLL-MLLR-BODY-DIAPHRAGM	IN: Female Luer	Polycarbonate	Silicone USP Class VI
	OUT: Male Luer w/ Rotating Collar	Polypropylene Kynar®	
MPV-MLLR-FLL-BODY-DIAPHRAGM	IN: Male Luer	Polycarbonate	Silicone USP Class VI
	Out: Female Luer	Polypropylene Kynar®	

Cleanroom Class 8 Production & Manufacturing Available



MPV SERIES | FOOD & BEVERAGE GRADE  
CHECK VALVES

High-Performance Plastic Check Valves - Pure, Reliable, and  
Built for Precision

Crafted from **NSF 51/62 Approved materials**, our plastic check valves are designed specifically for **food and beverage applications**, ensuring safety and compliance without the use of grease or oil—unlike traditional diaphragm valves.

- ✓ **Ideal for:** Food, beverage, water, and laboratory applications
- ✓ **Premium housing materials:** POM-Celcon, M90®, and PVDF (Arkema-Kynar 720®)
- ✓ **Diaphragm options:** EPDM, Santoprene™, and FDA Viton® disks
- ✓ **Available sizes:** 1/8", 3/16", 1/4", 5/16", and 3/8" barbed valves

Engineered for purity and performance, these valves meet the highest standards for critical applications.

[Download The Flyer](#)

SKU	Description	Body	Diaphragm
MPV-2B-Body-Diaphragm	1/8" Barbed Inline Check Valve Body Diaphragm	Acetal	FDA Viton®
			Silicone
			EPDM
MPV-3B-Body-Diaphragm	3/16" Barbed Inline Check Valve Body Diaphragm	Acetal	FDA Viton®
			Silicone
			EPDM
MPV-4BH-Body-Diaphragm	1/4" Barbed Hi-Flow Inline Check Valve Body Diaphragm	Acetal	FDA Viton®
			Silicone
			EPDM
MPV-5B-Body-Diaphragm	5/16" Barbed Hi-Flow Inline Check Valve Body Diaphragm	Acetal	FDA Viton®
			Silicone
			EPDM
MPV-6B-Body-Diaphragm	3/8" Barbed High-Flow Inline Check Valve Body Diaphragm	Acetal	FDA Viton®
			Silicone
			EPDM





MPV SERIES | AUTOMOTIVE GRADE CHECK VALVES

At **Pneuline Supply**, we craft high-performance **Plastic Check Valves** designed specifically for **automotive applications**—offering durability, efficiency, and reliable fluid control.

**Versatile Material Options:** Inlets: Choose from **Natural Nylon** or **Glass-Filled Natural Nylon** • Outlets: Available in **Black Nylon** or **Glass-Filled Black Nylon**

**Optimized Flow Performance:** **Standard Flow:** 1/8", 3/16", and 1/4" barbed connectors • **High Flow:** 1/4", 5/16", and 3/8" barbed connectors

**Premium Diaphragm Choices:** **Fluorosilicone** – Exceptional temperature & chemical resistance • **EPDM** – Reliable sealing and flexibility

**Custom Laser Part Marking:** Tailor your valves with unique **part number sequencing, lot numbers, or company branding**, ensuring seamless identification and traceability.

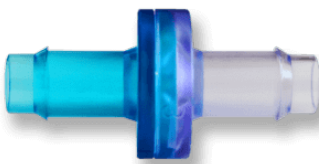
Built for **precision, reliability, and customization**, these check valves meet the highest industry standards for automotive performance.

[Download Our Flyer](#)

SKU	Description	Body	Diaphragm
MPV-2B-Body-Diaphragm	1/8" Barbed Inline Check Valve Body Diaphragm	Nylon	
		Glass-Filled Nylon	EPDM
		Polypropylene	Fluorosilicone
		Kynar®	
MPV-3B-Body-Diaphragm	3/16" Barbed Inline Check Valve Body Diaphragm	Nylon	
		Glass-Filled Nylon	EPDM
		Polypropylene	Fluorosilicone
		Kynar®	
MPV-4BH-Body-Diaphragm	1/4" Barbed Hi-Flow Inline Check Valve Body Diaphragm	Nylon	
		Glass-Filled Nylon	EPDM
		Polypropylene	Fluorosilicone
		Kynar®	
MPV-4B-Body-Diaphragm	1/4" Barbed Stand-Flow Inline Check Valve Body Diaphragm	Nylon	
		Glass-Filled Nylon	EPDM
		Polypropylene	Fluorosilicone
		Kynar®	
MPV-5B-Body-Diaphragm	5/16" Barbed Hi-Flow Inline Check Valve Body Diaphragm	Nylon	
		Glass-Filled Nylon	EPDM
		Polypropylene	Fluorosilicone
		Kynar®	



SKU	Description	Body	Diaphragm
MPV-6B-Body-Diaphragm	3/8" Barbed High-Flow	Nylon	
	Inline Check Valve	Glass-Filled Nylon	EPDM
	Body Diaphragm	Polypropylene Kynar®	Fluorosilicone



## MPV SERIES | MEDICAL GRADE CHECK VALVES

Manufactured and rigorously tested in a **Class 7 Cleanroom**, our **MPV Series Medical Grade Check Valves** are built to meet the highest standards for **medical, laboratory, and bio-pharmaceutical applications**. Each valve undergoes **100% Leak Decay Testing** in our cleanroom environment, ensuring unmatched reliability and contamination control.

### Premium Resin Options for Critical Applications

- **Nylon, Polypropylene, Polycarbonate, & Radiation-Stable Polycarbonate** – Ensuring durability and performance
- **Kynar® 720** – A trusted material for medical fluid handling
- **Custom resins are available** upon request for specialized needs

**Optimized High-Flow Sizes, 3/16", 5/16", and 3/8"** barbed valves, designed for superior flow control

### USP Class VI & FDA-Compliant Diaphragm Choices

- **Silicone USP Class VI** – Ideal for medical-grade applications
- **FDA Viton®** – Reliable sealing and chemical resistance

**Custom Molding for Tailored Solutions-** We offer **fully customizable resin and diaphragm options** to meet unique customer requirements, ensuring precision engineering for specialized applications.

Built for **purity, performance, and customization**, the MPV Series delivers exceptional quality for critical environments.

[Download the MPV Series Flyer](#)

SKU	Description	Body	Diaphragm
-----	-------------	------	-----------

MPV-2B-Body-Diaphragm	1/8" Barbed Inline Check Valve Body Diaphragm	Nylon Polycarbonate USP Class VI Polypropylene Silicone Kynar®
MPV-3B-Body-Diaphragm	3/16" Barbed Inline Check Valve Body Diaphragm	Nylon Polycarbonate USP Class VI Polypropylene Silicone Kynar®
MPV-4B-Body-Diaphragm	1/4" Barbed Stand- Flow Inline Check Valve Body Diaphragm	Nylon Polycarbonate USP Class VI Polypropylene Silicone Kynar®
MPV-5B-Body-Diaphragm	5/16" Barbed Hi-Flow Inline Check Valve Body Diaphragm	Nylon Polycarbonate USP Class VI Polypropylene Silicone Kynar®
MPV-6B-Body-Diaphragm	3/8" Barbed High- Flow Inline Check Valve Body Diaphragm	Nylon Polycarbonate USP Class VI Polypropylene Silicone Kynar®
Cleanroom Class 8 Production and Manufacturing		

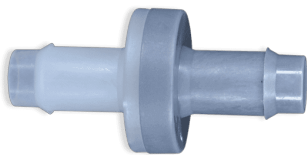
CIS SERIES



This is a non-barbed Check Valve with a white tubing port inlet and clear tubing port outlet. The body is made of Acrylic with a blue Silicone diaphragm. This check valve is pressure-rated at 45 psi. The port sizes are both .130" and will accommodate 1/16" ID soft Silicone tubing as well as other tubing of 1/8" and 3/32" ID. It is manufactured in an ISO Class 8 Cleanroom and is Gamma, E-beam, and EtO sterilizable. This valve is made of Class VI approved materials, it is ultrasonically welded and is 100% inline tested for backflow and weld leaks.

SKU	Description
CIS-6383	Check Valve .130 port Acrylic/Silicone .29CP

MPV SERIES | INDUSTRIAL GRADE CHECK VALVES



At **Pneuline Supply**, we manufacture **MPV Series Plastic Diaphragm Check Valves**, built for **exceptional performance** across diverse applications. Whether controlling **ozone, pools, spas, printing, inkjet systems, wound therapy, air mattresses, vacuum systems, or corrosive liquids**, these one-way valves ensure **smooth operation and uncompromising durability**.

**Designed for High-Purity & Specialized Use** Our exclusive **PVDF: Kynar® 720** valves—paired with **FFKM Kalrez® 4079 diaphragms**—deliver industry-leading chemical resistance and reliability, making them ideal for demanding environments.

**Versatile & Proven Performance** Trusted across **medical, industrial, and fluid-handling systems**, our valves excel in **corrosive, high-pressure, and controlled environments**, ensuring longevity and efficiency.

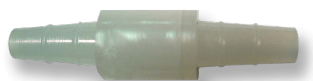
Upgrade to a **higher standard of precision and durability** with MPV Series Check Valves—engineered to perform when reliability matters most.

[Download Our Flyer](#)

SKU	Description	Body	Diaphragm
MPV-2B-Body-Diaphragm	1/8" Barbed Inline Check Valve Body Diaphragm	Kynar®	
		Nylon	Kalrez®
		Glass-Filled Nylon	FKM
		Acetal	Fluorsilicone
		Polypropylene	
MPV-3B-Body-Diaphragm	3/16" Barbed Inline Check Valve Body Diaphragm	Kynar®	
		Nylon	Kalrez®
		Glass-Filled Nylon	FKM
		Acetal	Fluorsilicone
		Polypropylene	
MPV-4B-Body-Diaphragm	1/4" Barbed Stand-Flow Inline Check Valve Body Diaphragm	Kynar®	
		Nylon	Kalrez®
		Glass-Filled Nylon	FKM
		Acetal	Fluorsilicone
		Polypropylene	
MPV-4BH-Body-Diaphragm	1/4" Barbed Hi-Flow Inline Check Valve Body Diaphragm	Kynar®	
		Nylon	Kalrez®
		Glass-Filled Nylon	FKM
		Acetal	Fluorsilicone
		Polypropylene	

SKU	Description	Body	Diaphragm
MPV-5B-Body-Diaphragm	5/16" Barbed Hi-Flow Inline Check Valve Body Diaphragm	Kynar®	
		Nylon	Kalrez®
		Glass-Filled Nylon	FKM
		Acetal	Fluorsilicone
		Polypropylene	
MPV-6B-Body-Diaphragm	3/8" Barbed High-Flow Inline Check Valve Body Diaphragm	Kynar®	
		Nylon	Kalrez®
		Glass-Filled Nylon	FKM
		Acetal	Fluorsilicone
		Polypropylene	

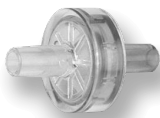
CSP SERIES - POLYETHYLENE CHECK VALVES



The CSP Series Check Valves have a Polyethylene housing with a Neoprene disc for the 1/4-inch size and a Polyethylene disc for the 3/8-inch size. The maximum pressure for these check valves is 20 psi.

SKU	Description
CSP-38	3/8 inch to 9/16 inch ID Polypropylene Check Valve

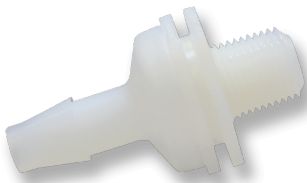
BBCV SERIES



The BBCV Series Check Valve has a Male Slip Luer with 30 psi back pressure and 1/4 psi inlet cracking pressure. This series comes in ABS or Polycarbonate housing, both with Silicone Discs.

SKU	Description
BBCV-MLFL-ABS	Male Luer by Female Luer ABS Check Valve .25 psi Crack
BBCV-MLFL-01-ABS	Male Luer by Female Luer ABS Check Valve .01 psi Crack
BBCV-MLML-ABS	Male Luer by Male Luer ABS Check Valve .25 psi Crack

CMKV SERIES



The CMKV Series Plastic Check Valves are 1/8 inch Male NPT by Barb sizes of 1/8 inch, 3/16 inch, 1/4 inch, and 3/8 inch. The flow is from thread to barb. Material / Disc combinations are available in PVDF with FKM, Polypropylene with FKM, Polycarbonate with Neoprene, Polycarbonate with Silicone, Nylon with Silicone, and Nylon with Neoprene.

SKU	Description
CMKV-18B	1/8 MNPT by 1/8 Barb PVDF/FKM Check Valve
CMKV-14B-NS	1/8 MNPT by 1/4 Barb Nylon/Silicone Check Valve
CMKV-316B	1/8 MNPT by 3/16 Barb PVDF/FKM Check Valve



**VC-IG SERIES**

The VC-IG Series Plastic Check Valves have housing molded of Polysulfone or Polypropylene with either a POM or Silicone disc. The cracking pressure for these units is .8 H<sup>2</sup>O or .028 psi. The 10-32 inch units have a cracking pressure of 10 H<sup>2</sup>O or .36 psi. These check valves were made to be used in low-pressure applications. Reverse flow at 1 psi is available as follows: Polypropylene with Silicone: .20 SCIM, Polysulfone with POM 2.98 SCIM, Polysulfone with POM 1.00 SCIM R2, Polysulfone with Silicone .20 SCIM, and Polysulfone with Silicone .06 SCIM 10-32 inch Female ports only. Maximum pressure is 10 psi excluding the 10-32 inch port which is rated for 75 psi.

SKU	Description
VC-IG-1032F-PSS	1032 Female PS Silicon Check Valve
VC-IG-1B-PPS	1/16 Barb PP Silicone Check Valve
VC-IG-1B-PSC R2	1/16 Barb PS Celcon® Check Valve
VC-IG-1B-PSS	1/16 Barb PS Silicone Check Valve
VC-IG-1S-PPS	1/16 Shaft PP Silicone Check Valve
VC-IG-1S-PSC	1/16 Shaft PS Celcon® Check Valve
VC-IG-1S-PSC R2	1/16 Shaft PS Celcon® Check Valve
VC-IG-1S-PSS	1/16 Shaft PS Silicone Check Valve
VC-IG-2B-PPS	1/8 Barb PP Silicone Check Valve
VC-IG-2B-PSC R2	1/8 Barb PS Celcon® Check Valve
VC-IG-2B-PSS	1/8 Barb PS Silicone Check Valve



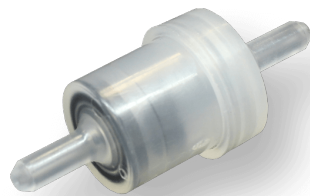
## DUCKBILL CHECK VALVES

### **DUCKBILL CHECK VALVES**

Pneuline Supply offers several different duckbill check valve options. Duckbill check valves are usually used in the medical industry, for example in situations where backflow is a main concern.



CNV SERIES



The CNV Series Check Valve is made of Polypropylene and is available in three sizes for 1/16 inch, 5/32 inch, or 1/8 inch ID tubing. The 1/16-inch ID tubing has either a 3-inch water column or an 8-inch water column opening pressure. The 8 inch water column is available with an EPDM or ECH duckbill. The 3-inch water column is offered with only an EPDM duckbill. The 1/8-inch size has a 3-inch water column with an EPDM duckbill. The 5/32-inch size has a 3-inch water column with an EPDM duckbill. A 3-inch water column equals 1/10 psi, and an 8 inch water column equals 1/3 psi. The maximum pressure for this check valve is 30 psi and the temperature range is from 35° F to 150° F.

SKU	Description
CNV-16S-PPEP-3	1/16 inch ID EPDM Duckbill Check Valve 3" water column
CNV-16S-PPEP-8	1/16 inch ID EPDM Duckbill Check Valve 8" water column
CNV-16S-PPEPC-8	1/16 inch ID ECH Duckbill Check Valve 8" water column
CNV-18S-PPEP	1/8 inch ID EPDM Duckbill Check Valve 3" water column
CNV-532S-PPEP-3	5/32 inch ID EPDM Duckbill Check Valve 3" water column

CDV SERIES



This is a non-barbed **Acrylic or Polycarbonate Check Valve** with a Silicone duck bill. This is a normally open, one-way check valve. It prevents backflow leakage with minimal pressure. The ends of the ports measure .134 to accommodate 1/8" ID tubing. These fittings are also available with male and female Luer Locks.

SKU	Description
CDV-125	1/8 inch ID Acrylic Luer Duckbill Check Valve
CDV-125MLL	1/8 inch ID to Male Luer Lock Acrylic Duckbill Check Valve
CDV-125-PC	1/8 inch ID Polycarbonate Duckbill Check Valve
CDV-18	1/8 inch ID Tubing Acrylic Duckbill Check Valve
CDV-FL-125	1/8 inch ID to Female Luer Lock Acrylic Duckbill Check Valve
CDV-FLL125	Female Luer Lock by .125
CDV-FLLML	Female Luer Lock to Male Slip Luer Acrylic Duckbill Check Valve

SKU	Description
CDV-FLLMLL	Female Luer Lock to Male Luer Lock Acrylic Duckbill Check Valve
CDV-ML	1/8 inch ID Male Luer Acrylic Duckbill Check Valve

QCD SERIES - LUER DUCKBILL CHECK VALVES



The QCD Series Luer Check Valves are made of Polycarbonate and have a Silicone duck bill. The low cracking pressure is 0.433 psi, which determines when the component starts to open. The OD sizes are 5/64 inch, 7/64 inch, and 9/64 inch. Also available with female and male Luer Locks.

SKU	Description
QCD-564	5/64 inch OD Tubing Polycarbonate Luer Check Valve
QCD-764	7/64 inch OD Tubing Polycarbonate Luer Check Valve
QCD-964	9/64 inch OD Tubing Polycarbonate Luer Check Valve
QCD-FM	Female by Male Luer Lock Polycarbonate Check Valve

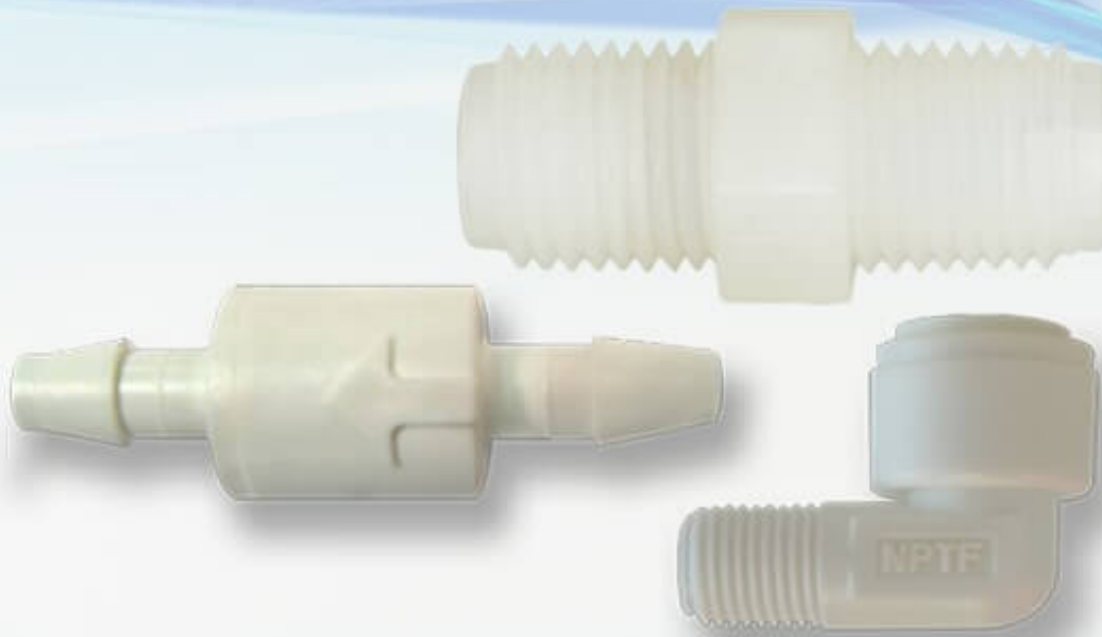
ASD SERIES



These ASD Series single barbed enlarging duckbill Check Valves are available in several materials such as Nylon (N), Polypropylene (PP), or Polycarbonate (PC) housing. These Check Valves have a Silicone diaphragm. The available barb sizes are 1/8 inch by 3/16 inch and 3/16 inch by 1/8 inch.

SKU	Description
ASD-2B	1/8 Barb
ASD-2B3B	1/8 Barb by 3/16 Barb
ASD-3B	3/16 Barb
ASD-3B2B	3/16 Barb by 1/8 Barb





## PLASTIC BALL CHECK VALVES

### **PLASTIC BALL CHECK VALVES**

Plastic ball valves simple designs reduce the need for maintenance and energy needs.  
The ball inside automatically moves from the flow path to block it.

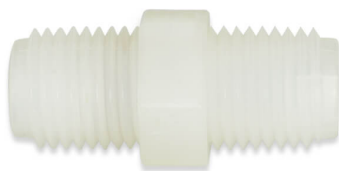
## DCE SERIES



The DCE Series is a rigid male Check Valve elbow made of Acetal that is NSF 51® certified and meets NSF 61® requirements. The available male threads are 1/8 inch, 1/4 inch, and 3/8 inch. OD tubing sizes are 5/32 inch, 3/16 inch, 1/4 inch, 5/16 inch, 3/8 inch, and 1/2 inch. The working pressure at 77° F is 232 psi, and at 158° F it is 145 psi. The working temperature range is from 32° F to 158° F. It can be used for compressed air, inert gases, water, and other fluids.

SKU	Description
DCE-2M-14	1/8 MNPT by 1/4 OD Push-in Elbow Spring-loaded Check Valve
DCE-4M-14	1/4 MNPT by 1/4 OD Push-to Connect Elbow Check Valve
DCE-6M-14	3/8 MNPT by 1/4 OD Push-to Connect Elbow Check Valve

## CVK SERIES - MALE CHECK VALVES



The CVK Series are male-by-male Check Valves made of natural PVDF. It has a 316 Stainless Steel spring and ball Viton® O-ring. Other O-ring options are EPDM and Fluorosilicone (blue). These check valves have a 1-2.5 psi cracking pressure with a maximum operating pressure of 220 psi and a maximum working temperature of 180°F. Available with a Hastelloy® spring and PTFE ball. Available Male NPT thread sizes are: 1/8 inch, 1/4 inch, 3/8 inch, and 1/2 inch.

SKU	Description
CVK-2M	1/8 inch NPT Check Valve PVDF
CVK-4M	1/4 NPT Check Valve PVDF
CVK-6M	3/8 inch NPT Check Valve PVDF
CVK-6M-HPTFE	3/8 inch M Check Valve PVDF, Hastelloy®/PTFE/FKM
CVK-8M	1/2 inch NPT Check Valve PVDF
CVK-8M-HPTFE	1/2 inch M Check Valve PVDF, Hastelloy®/PTFE/FKM

## MCV SERIES - CHECK VALVES



The MCV Series Check Valve housings are available in various materials: White Nylon is standard, with Black Nylon optional; Natural Polypropylene is standard with Black Polypropylene optional. Black PVDF is also available. Different colors can be specially formulated. O-ring Seals are Buna-N, EPDM, Viton®, and Silicone. The standard spring is 302 Stainless Steel with 316 Stainless Steel ball. The Standard barb inlet and outlet sizes are for 1/8 inch, 3/16 inch, and 1/4 inch ID tubing. The outlet side is available with a 1/8 Male NPT or 1/4 Male NPT.

The maximum operating pressure is 125 psi. and the maximum operating temperature is 140° F. PVDF is sold with PTFE seals and a Hastelloy Springs.

### Spring Options:

No Spring  
 1/2 psi - 302 Stainless  
 1 psi - 302 Stainless  
 2 psi - 302 Stainless  
 3 psi - 302 Stainless

## MCV SERIES PRODUCT LIST

Pneuline Part Number	Size	Body	Seal	PSI
MCV-4B-PPE-1	1/4 (4B)	Polypropylene	EPDM	1 PSI
MCV-4B-NV-1/2	1/4 (4B)	Nylon	Viton ®	1/2 PSI
MCV-4B-NV-1	1/4 (4B)	Nylon	Viton ®	1 PSI
MCV-4B3B-NB-2	1/4 (4B) by 3/16 (3B)	Nylon	Buna	2 PSI
MCV-3B-PPV-3	3/16 (3B)	Polypropylene	Viton ®	3 PSI
MCV-3B-PPV-1/2	3/16 (3B)	Polypropylene	Viton ®	1/2 PSI
MCV-3B-PPV-1	3/16 (3B)	Polypropylene	Viton ®	1 PSI
MCV-3B-PPE-2	3/16 (3B)	Polypropylene	EPDM	2 PSI
MCV-3B-PPE-1/2	3/16 (3B)	Polypropylene	EPDM	1/2 PSI
MCV-3B-PPE-1	3/16 (3B)	Polypropylene	EPDM	1 PSI
MCV-3B-NV-1	3/16 (3B)	Nylon	Viton ®	1 PSI
MCV-3B-NV-2	3/16 (3B)	Nylon	Viton ®	2 PSI
MCV-3B4B-PPV-3	3/16 (3B) by 1/4 (4B)	Polypropylene	Viton ®	3 PSI
MCV-3B4B-PPE-3	3/16 (3B) by 1/4 (4B)	Polypropylene	EPDM	3 PSI
MCV-2B-PPV-2	1/8 (2B)	Polypropylene	Viton ®	2 PSI
MCV-2B-PPV-1/2	1/8 (2B)	Polypropylene	Viton ®	1/2 PSI
MCV-2B-PPE-3	1/8 (2B)	Polypropylene	EPDM	3 PSI



MCV-2B-PPE-2	1/8 (2B)	Polypropylene EPDM	2 PSI
MCV-2B-PPE-1/2	1/8 (2B)	Polypropylene EPDM	1/2 PSI
MCV-2B-PPE-1	1/8 (2B)	Polypropylene EPDM	1 PSI
MCV-2B-PPB-2	1/8 (2B)	Polypropylene Buna	2 PSI
MCV-2B-NV-1/2	1/8 (2B)	Nylon	Viton ® 1/2 PSI
MCV-2B-NV-1	1/8 (2B)	Nylon	Viton ® 1 PSI
MCV-2B-NB-1	1/8 (2B)	Nylon	Buna 1 PSI
MCV-2B4B-PPV-2	1/8 (2B) by 1/4 (4B)	Polypropylene Viton ®	2 PSI
MCV-2B4B-PPE-1/2	1/8 (2B) by 1/4 (4B)	Polypropylene EPDM	1/2 PSI
MCV-2B2M-PPV-2	1/8 (2B) 1/8 MNPT	Polypropylene Viton ®	2 PSI
MCV-4B4B-PPV-1	1/4 (4B)	Polypropylene Viton ®	1 PSI





## POPPET CHECK VALVE

### **POPPET CHECK VALVES**

Poppet check valves offer an easy way to control the timing and quantity of the flow of gas or vapor.



## PCVM SERIES

The PCVM series is a push-in acetal poppet check valve, see available sizes and PSI options below.

SKU	DESCRIPTION
PCVM-4	1/4 Push-to-Connect Polypropylene Check Valve 2.75 psi
PCVM-4-2M	1/4 Push-to-Connect by 1/8 MNPT Check Valve .75 psi
PCVM-4-3	1/4 Push-to-Connect Polypropylene 2.75 psi
PCVM-4-5	1/4 Push-to-Connect Polypropylene Check Valve 5 psi
PCVM-4PP	1/4 Push-to-Connect Polypropylene Check Valve .3 psi
PCVM-6	3/8 Push-to-Connect Polypropylene Check Valve .3 psi



## FSPV SERIES - POPPET CHECK VALVES

The FSPV Series Poppet Check Valves come in Black PVDF, Black Polypropylene, and White Polypropylene with a choice of Buna-N, EPDM, Viton®, or Kalrez® seal. The standard spring is 302 Stainless Steel with a cracking pressure of 1/3 psi. Optional springs of 1 or 7 psi are available. These high-flow valves can be used in pressures up to 125 psi. Hastelloy spring is optional. The inlet and outlet sizes are Female NPT 1/4 inch, 3/8 inch, 1/2 inch, and 3/4 inch, and Male NPT size of 1/2 inch.

SKU	Description
FSPV-12F	1/2 FNPT Poly Poppet Check Valve
FSPV-12F12M	1/2 FNPT by 1/2 MNPT Poly Poppet Check Valve
FSPV-12M12M	1/2 MNPT by 1/2 MNPT Poly Poppet Check Valve
FSPV-12M-HV	1/2 MNPT Valve Hastelloy® FKM Poppet Check Valve
FSPV-14F	1/4 FNPT Poly FKM 302 1 psi Poppet Check Valve
FSPV-14F-.3E-WP	1/4 FNPT White Poly EPDM Seals 1/3 psi Poppet Check Valve
FSPV-14F-HV-1	1/4 FNPT Poly FKM Hastelloy® 1 psi Poppet Check Valve
FSPV-34F	3/4 FNPT Poly FKM Disk 1/3 psi Poppet Check Valve
FSPV-34F-11WC	3/4 FNPT Poly FKM 11" C 1/3 psi Poppet Check Valve
FSPV-34F-5WC	3/4 FNPT Poly FKM 5" WC Poppet Check Valve

SKU	Description
FSPV-34F-HV	3/4 FNPT Poly FKM Disk Hastelloy® 1/3 psi Poppet Check Valve
FSPV-34F-HV-.7	3/4 FNPT Poly FKM O-Ring Hastelloy® .7 psi Poppet Check Valve
FSPV-34F-HV-1.5	3/4 FNPT Poly FKM O-Ring Hastelloy® 1.5 psi Poppet Check Valve
FSPV-34F-HV-11WC	3/4 FNPT Poly FKM O-Ring Hastelloy® 11 WC Poppet Check Valve
FSPV-38F	3/8 FNPT Poly FKM 302 1/3 psi Poppet Check Valve
FSPV-38F-E-9	3/8 FNPT Poly FKM 302 1 psi Poppet Check Valve
FSPV-38F-HV-2	3/8 FNPT Poly Hastelloy® FKM #2 O-Ring Poppet Check Valve

## SPC SERIES



The SPC Series Plastic are PVC, Polypropylene, Nylon Plastic Check Valves and have 302 Stainless Steel springs, 316 Stainless Steel balls, and EPDM seals. 1 psi spring is standard with optional 1/3, 3, 5, 7, 10, or 12-pound springs. Available in barbs, MNPT, FNPT, Push-in connections with multiple combinations. Hastelloy spring, PTFE ball, and FKM O-rings for aggressive environments are available.

SKU	Description
SPC-2B2B-PB-12	1/8 inch Barb Valve Polypropylene Buna 12 psi
SPC-2B-PP-E-10	1/8 inch Barb Polypropylene EPDM 10 psi
SPC-2B-V-12	1/8 inch Barb Viton® with 12 Spring
SPC-2C2C	1/8 inch Compression by 1/8 inch Compression
SPC-2C2M-H-V	1/8 inch Compression by 1/8 inch MNPT Hastelloy® FKM
SPC-2F2F	1/8 inch Female by 1/8 inch Female
SPC-2F2F-HV	1/8 inch Female NPT with Hastelloy® FKM Seals
SPC-2M2M	1/8 inch Male by 1/8 inch Male
SPC-2M4F-E	1/8 inch NPT to 1/4 inch Female EPDM Seals
SPC-4B2M-HV-12	1/4 inch Barb to 1/8 inch MNPT Hastelloy® FKM 12 psi
SPC-4B2M-HV-3	1/4 inch Barb to 1/8 inch MNPT Hastelloy® FKM 3psi
SPC-4B4B	1/4 inch Barb by 1/4 inch Barb
SPC-4B4B-HV	1/4 inch Barb Hastelloy® FKM .5 psi
SPC-4B4B-V-12	1/4 inch Barb FKM with 12 spring
SPC-4B4M-BKPP-HV-1/3	1/4 inch Barb 1/4 inch Male Black Polypropylene FKM Hastelloy® 1/3 psi
SPC-4B4M-VH	1/4 inch Barb by 1/4 inch MNPT FKM/Hastelloy®
SPC-4B-V-12	1/4 inch Barb Viton® with 12 psi Spring
SPC-4B-V-H-1	1/4 inch Barb PVC FKM PTFE/Hastelloy® 1 psi

SKU	Description
SPC-4C2M-H-V	1/4 inch Compression by 1/8 inch MNPT Hastelloy® FKM
SPC-4C4C	1/4 inch Compression by 1/4 inch Compression
SPC-4C4M-K-H-V	1/4 inch Compression 1/4 inch Male PVDF Hastelloy® FKM
SPC-4F4F	1/4 inch Female by 1/4 inch Female
SPC-4F4F-H-V	1/4 inch F by 1/4 inch Female Hastelloy® FKM
SPC-4F4F-K-H-V	1/4 inch Female PVDF Hastelloy® FKM
SPC-4F4FPP-H-V-3	1/4 inch Female Polypropylene Hastelloy® FKM 3 psi
SPC-4F4M-H-V-90PP	1/4 inch Female by 1/4 inch NPT Polypropylene Hastelloy®/ FKM 90 Micron
SPC-4F4M-K-H-V	1/4 inch Female by 1/4 inch M PVDF Hastelloy® FKM
SPC-4M4B-HV	1/4 inch Male 1/4 inch Barb FKM Hastelloy®
SPC-4M4F-H-V	1/4 inch Male by 1/4 inch Female Hastelloy® FKM 1 psi
SPC-4M4F-K-H-V	1/4 inch Male by 1/4 inch Female PVDF Hastelloy® FKM
SPC-4M4M	1/4 inch Male by 1/4 inch Male
SPC-4M4M-H-V	1/4 inch Male by 1/4 inch Male Hastelloy® FKM 1 psi
SPC-4M4P	1/4 inch Male 1/4 inch Push-in
SPC-4M6B	1/4 inch Male 3/8 inch Barb
SPC-4P2M-H-V	1/4 inch Push-in by 1/8 inch Male Hastelloy®
SPC-4P4P	1/4 inch Push-in by 1/4 inch Push-in
SPC-4P4P-HV	1/4 inch Push-in Hastelloy® FKM
SPC-4P4P-SS-HV	1/4 inch Push-in Stainless Steel Ball Hastelloy® FKM
SPC-4P6B-H-V-7	1/4 inch Push-in 3/8 inch Barb Hastelloy® FKM 7
SPC-4PI2M-H-V	1/4 inch Push-in by 1/8 inch Male Hastelloy®/ FKM
SPC-4S4P	1/4 inch Stem by 1/4 inch Push-in
SPC-6B6B	3/8 inch Barb by 3/8 inch Barb
SPC-6B-F-1/3	3/8 inch Barb Fluoroelastomer 1/3 psi
SPC-6P4F-H-V	3/8 inch Push-in by 1/4 inch Female Hastelloy®/ Viton®
SPC-6P4M-H-V	3/8 inch Push-in by 1/4 inch Male Hastelloy®/ Viton®
SPC-6P-6B-H-V	3/8 inch Push-in 3/8 inch Barb Hastelloy® FKM 7 psi
SPC-6P-6B-H-V-R	3/8 inch Push-in 3/8 inch Barb Hastelloy® FKM 7 psi
SPC-6P6M-H-V RV1	3/8 inch Push-in by 3/8 inch Male Hastelloy®/ Viton®
SPC-6S6P	3/8 inch Stem by 3/8 inch Push-in
SPC-8B8B	1/8 inch Male by 1/8 inch Male



CCV SERIES - POPPET CHECK VALVES

The CCV Series are miniature Poppet Check Valves and Pressure Release Valves available with 1/8 inch Male NPT threads and 1/4 inch compression fittings. The NPT fittings are made of Polypropylene, Nylon, and ABS with O-rings made of Buna-N, EPDM, Viton®, Silicone, or fluorosilicone. The spring pressure is 20 psi. The compression fittings are made of Polypropylene with a .713 OD size.

SKU	Description
CCV-2M14C-1	1/8 MNPT by 1/4 Comp Polypropylene / EPDM 1 psi
CCV-2M14C-1.5	1/8 MNPT by 1/4 Comp Polypropylene / EPDM 1.5 psi
CCV-2M14C-3	1/8 MNPT by 1/4 Comp Polypropylene / EPDM 3 psi
CCV-2M14C-3-PPS	1/8 MNPT by 1/4 Comp Polypropylene / Silicone 3 psi
CCV-2M-3	1/8 MNPT by 1/8 MNPT Polypropylene / EPDM 3 psi
CCV-4C6M-3	1/4 Comp by 3/8 MNPT Polypropylene / EPDM 3 psi
CCV-4M14C-1	1/4 MNPT by 1/4 Comp Polypropylene / EPDM 1 psi
CCV-4M-4	1/4 MNPT by 1/4 MNPT Polypropylene / EPDM 4 psi

MSV SERIES | SPRING-LOADED CHECK VALVES



Pneuline Supply, Inc. manufactures the MSV Series inline spring-loaded check valves in a class 8 clean room environment specifically for use in medical applications. Custom molding allows for customer-specific requirements which include resin options, connector variations, and O-ring selections. Available resin options include Polycarbonate, Radiation-stable Polycarbonate, and Kynar® 720 (PVDF). Other custom resins are available upon request. Barbed connectors are available in 1/8-inch, 3/16-inch, and 1/4-inch standard flow or 1/4-inch-high flow, 5/16-inch, and 3/8-inch. Springs are made of 316 Stainless Steel or Hastelloy® in .022 psi, .25 psi, .50 psi, 1 psi, 5 psi, or 10 psi. Passivated springs are available. O-ring options are Silicone USP class VI, Fluorosilicone, EPDM, Viton®, or Kalrez®. To make this product truly unique, we offer custom laser marking for identification purposes such as part number sequencing, lot numbers, or company name.

*\*Poppet and Piston are optional.*

**[Download the MSV Series Flyer](#)**

SKU	Description
MSV-2B-AC-6	1/8 Valve Acetal EPDM 6 PSI
MSV-2B-AC-E-.25	1/8 Valve Acetal EPDM .22
MSV-2B-AC-E-1	1/8 Valve Acetal EPDM 1 PSI
MSV-2B-AC-E-5	1/8 Valve Acetal EPDM 5 PSI
MSV-3BAC-.75V-41	3/16 Acetal .75 Viton with 41 micron
MSV-3B-AC-B-1	3/16 Valve Acetal Buna 1
MSV-3B-AC-E-1	3/16 Valve Acetal EPDM 1
MSV-3B-K720-1SS-V	3/16 Kynar 720 Valve Viton 1 PSI 316 SS
MSV-3B-K720-E-.5H	3/16 Kynar 720 Valve EPDM .5 Hastelloy®
MSV-3B-PC-E-.5	3/16 Barb PC EPDM 1/2 PSI
MSV-3B-PC-E-.75	3/16 Barb PC Valve EPDM .75
MSV-3B-PC-E-1	3/16 Barb PC EPDM 1PSI
MSV-3B-Rx2530-6WC-S	3/16 Barb RSPC Valve 6WC Silicone
MSV-4B-PC-S-.22PI	1/4 Valve Polycarb Silicone .22
MSV-4B-PC-S-.5	1/4 Valve Polycarb Silicone .5
MSV-5B-Rx2530-6WC-S	5/16 Barb RSPC Spring Valve 6WC Silicone
MSV-6B-AC-.22 E	3/8 Valve Acetal .22 EPDM
MSV-6B-AC-E-1	3/8 Valve Acetal EPDM 1 PSI
MSV-6B-K720-E-1	3/8 Valve Kynar EPDM 1 PSI
MSV-6B-Rx2530-6WC-S	5/16 Barb RSPC Spring Valve 6WC Silicone



## SELF-SEALING CHECK VALVES

### **SELF-SEALING CHECK VALVES**

Our PSSV Series is a new addition to our check valve collection, these valves are used to shut out backflow in liquid and air applications.





PSSV SERIES

Precision-crafted in a **Class 7 Cleanroom**, our **PSSV Series Self-Sealing Check Valves** provide superior **back-flow prevention** for **critical air and fluid applications**. Designed for **medical, respiratory, ventilator, and bio-pharmaceutical** environments, these valves ensure **high-purity performance and contamination control**.

✓ **Reliable Back-Flow Prevention**

- Innovative **retractable silicone disk** for secure sealing
- Designed for pressures **under 50 PSI**, ensuring dependable flow control

✓ **High-Quality Materials for Medical-Grade Durability:**  
**Polycarbonate & Polypropylene** housings

Additional material options: **Radiation-Stable Polycarbonate & PVDF**

✓ **Versatile Sterilization Compatibility:**

- **Gamma Sterilization (6 Mrads)**
- **ETO Sterilization** for medical-grade cleanliness

✓ **Customizable Designs for Your Unique Needs:**

- **Barbed connectors:** Available for **3/16" ID tubing and 5/16" ID tubing**
- Optional **EPDM sealing material** with qualifying volumes
- **Expanded connection options:** Male & Female **Luer** fittings and **Bond-in connections** tailored to volume requirements

Engineered for **precision, purity, and flexibility**, the **PSSV Series** is the trusted solution for demanding medical and fluid-handling applications.

- *Open pressure is approximately .20 PSI*
- *Flow is 56.29 l/h*
- *Crack Pressure is .001 PSI*

[View our Flyer Here](#)

SKU	Description	Diaphragm
PSSV-3B-PP	3/16 inch by 3/16 inch Polypropylene Barbed Self-Sealing Check Valve	Silicone EPDM
PSSV-3B-PC	3/16 inch by 3/16 inch Polycarbonate Barbed Self-Sealing Check Valve	Silicone EPDM
PSSV-5B-PP	5/16 inch by 5/16 inch Polypropylene Barbed Self-Sealing Check Valve	Silicone EPDM
PSSV-5B-PC	5/16 inch by 5/16 inch Polycarbonate Barbed Self-Sealing Check Valve	Silicone EPDM



SKU	Description	Diaphragm
PSSV-5B3B-PP	5/16 inch by 3/16 inch Polypropylene Barbed Self-Sealing Check Valve	Silicone EPDM
PSSV-5B3B-PC	5/16 inch by 3/16 inch Polycarbonate Barbed Self-Sealing Check Valve	Silicone EPDM