



METAL ORIFICES

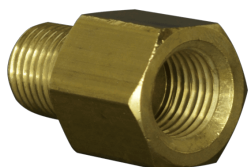
METAL ORIFICES

Discover the Perfect Orifice Solution at Pneuline Supply—Request Your Quote Today!



BOE SERIES

BOE Series features a high-quality Brass 1/8 NPT Adapter, specifically designed for reliable performance in various applications. The model BOE-2M has a precise length of 15/16 inches, ensuring a secure and efficient connection. This adapter is crafted from durable brass, providing excellent resistance to corrosion and wear, making it ideal for both residential and industrial use.



AMO SERIES

AMO Series are Brass or 303 Stainless Steel adapter orifices available with 10-32 UNF, 1/8", 1/4", 3/8", or 1/2" National Pipe Threads. Also, orifice sizes are .004-.125 MM, Stainless are .004-.125 MM. Used for Air, Water Gas applications up to 100 PSI. Furthermore, they are used for Speed control for cylinders and actuators. Orifices are Bi-directional flow with predictable flow rates.

SHN SERIES



This product features a robust housing made from either high-quality brass or 303 stainless steels, ensuring durability and resistance to corrosion. It incorporates a synthetic sapphire orifice, which is encased in a nylon sleeve for added protection and longevity. The male NPT threads are precisely machined to a 1/8-inch size, providing a secure and reliable connection. Additionally, this product is available with an optional filter, enhancing its versatility and functionality for various applications.

TBB SERIES



TBB Series is a high-quality brass tube-to-tube connector with a sapphire orifice, designed for durability and reliability in various applications. This connector features a precision-engineered sapphire orifice, which ensures optimal flow control and resistance to wear. The connector is equipped with 1/16-inch barbs, providing a secure and leak-free connection for tubing. Its robust construction and superior materials make it an excellent choice for both laboratory and industrial use.

UMO SERIES



UMO Series is a 10-32 male UNF Bleed Plug of Brass or 303 Stainless Steel. Orifice sizes for the Brass are 4-35 for Stainless Steel they are 6-35. O-rings are FKM. These fittings are available with a filter on the top. For sizing reference the **Orifice Sizing Chart**

USO SERIES



USO Series is a Brass Bleed Plug with a Sapphire Orifice. It has 10-32 male UNF threads and a Viton® seal. Standard orifice sizes range from .004" to .035". For sizing reference the **Orifice Sizing Chart**



RAO SERIES

The RAO Series is a Round Head NPT.

For sizing reference the [**Orifice Sizing Chart**](#)



DMO SERIES

DMO series is a brass or 303 Stainless Steel Orifice with a 10-32 male UNF thread by a 1/16" or 1/8" Barb. Brass orifice sizes 4-35, Stainless 6-35.

For sizing reference the [**Orifice Sizing Chart**](#).



SHO SERIES

The Sapphire Orifice in a Nylon sleeve is housed in a Brass 10-32 male UNF to a 1/16" barb fitting. The seal is Viton®. Nickel-plated Brass is also available. For sizing reference the [Orifice Sizing Chart](#)



MHO SERIES

The MHO Series is a brass or 303 Stainless Steel Hex Nipple Orifice with 1/8", 1/4", or 3/8" male NPT threads. Brass orifice sizes are 4-125, Stainless are 6-125. They are available with a filter.

For sizing reference the [Orifice Sizing Chart](#)

FAOH SERIES



The FAOH Series is a Flat Tip Hex Metal Orifice.
For sizing reference the [Orifice Sizing Chart](#)

ISR SERIES



The ISR Series is a Brass Thread Insert. For sizes visit the [Orifice Sizing Chart](#).

SKU		Description
10-32	.375 3/32 recessed hex	
1/4-28	.375 1/8 recessed hex	