



## **BRASS FITTINGS**

Pneuline Supply, Inc. supplies a wide variety of Brass Fittings including: Adapters, Couplings, Elbows, Nipples, Unions, Tees, Plugs, Swivel, Pipe Fittings and Caps, Hose Barb Fittings, Bite-Style, Wye, and more. Uses of Brass Fittings include: Water, Chemicals, Flammable Gases, Slurries, and other plumbing substances. Brass Fittings can accommodate pressures of 400 psi depending on the design, type, size, and application however most small brass fittings are rated for lower pressure with nominal pressures of 200 psi and temperature ranges from -65 degrees F to +250 degrees F.



HOSE BARB FITTINGS

HOSE BARB FITTINGS



DCP SERIES

The DCP Series is a Brass 10-32 inch male UNF thread to multi-barb adapter. It is available with 2, 3, or 4 barbs. Available barb sizes are 1/16 inch and 1/8 inch ID. This series works well with Polyurethane tubing. The maximum working pressure is 150 psi and the temperature range is -65° F to 90° F.

SKU	Description
DCP-10-2DB	10-32 inch UNF by 1/8 inch Double Barb Brass Adapter
DCP-10-2Q	10-32 inch UNF by Quad 1/8 inch Barb Brass Adapter
DCP-10-2TB	10-32 inch UNF by 1/8 inch Triple Barb Brass Adapter

BHT SERIES



The BHT Series is a forged Brass multi-barbed Tee connector. Available barb sizes are 1/8 inch, 1/4 inch, and 3/4 inch. The working temperature range is -40° F to 160° F. Maximum working pressure is 150 psi. This fitting is designed for use with a hose clamp.

SKU		Description
BHT-2	1/8 inch Brass Multi-Barbed Tee Connector	
BHT-4	1/4 inch Brass Multi-Barbed Tee Connector	
BHT-34	3/4 inch Brass Multi-Barbed Tee Connector	

BHMT SERIES



Brass Tee. The size available is 1/4" male NPT threads to 3/8" barb. The maximum pressure for this Tee is 150 psi and the temperature range is -40° F to 160° F. Designed to be used with hose clamps.

SKU		DESCRIPTION
BHMT-4M6B	1/4 MNPT to 3/8 Barb Brass Tee	



## BHME45 SERIES

Forged Brass multi-barbed 45° Elbow with male NPT threads. Flow can be equal or reduced. The temperature range is -40° F to 160° F and the working pressure is 150 psi. Barstock is optional on the sizes shown below.

SKU	Description
BHME45-2M6B	1/8 inch MNPT by 3/8 inch Brass Multi-Barbed 45 Degree Elbow Adapter
BHME45-2M4B	1/8 inch MNPT by 1/4 inch Brass Multi-Barbed 45 Degree Elbow Adapter
BHME45-4M4B	1/4 inch MNPT by 1/4 inch Brass Multi-Barbed 45 Degree Elbow Adapter
BHME45-4M4B-B	1/4 inch MNPT by 1/4 inch Brass Multi-Barbed 45 Degree Barstock Elbow Adapter
BHME45-4M6B	1/4 inch MNPT by 3/8 inch Brass Multi-Barbed 45 Degree Elbow Adapter
BHME45-4M8B	1/4 inch MNPT by 1/2 inch Brass Multi-Barbed 45 Degree Elbow Adapter
BHME45-6M6B	3/8 inch MNPT by 3/8 inch Brass Multi-Barbed 45 Degree Elbow Adapter
BHME-456M8B	3/8 inch MNPT by 1/2 inch Brass Multi-Barbed 45 Degree Elbow Adapter
BHME-456M10B	3/8 inch MNPT by 5/8 inch Brass Multi-Barbed 45 Degree Elbow Adapter

## BHME SERIES



The BHME Series is a forged Brass multi-barbed 90° Elbow Adapter with male NPT threads. Available MNPT thread sizes range from 1/8 inch to 1 inch. Available barb sizes range from 3/16 inches to 3/4 inches. Flow can be equal or reduced. The working temperature range is -40° to 160° and the working pressure is 150 psi. Barstock is optional for some sizes (see list below).

SKU	Description
BHME-2M3B	1/8 MNPT by 3/16 Hose Barb Elbow Forged
BHME-2M4B	1/8 MNPT By 1/4 Hose Barb Elbow Forged B
BHME-2M5B	1/8 MNPT By 5/16 Hose Barb Elbow Forged
BHME-2M6B	1/8 MNPT By 3/8 Barb Elbow Forged
BHME-38M18B-R2	3/8 MNPT By 1/8 Hose Barb Elbow Forged 2 Piece Unit
BHME-4M3B	1/4 MNPT by 3/16 Hose Barb Elbow Forged
BHME-4M4B	1/4 MNPT By 1/4 Hose Barb Elbow Forged B

SKU	Description
BHME-4M5B	1/4 MNPT by 5/16 Hose Barb Elbow Forged
BHME-4M6B	1/4 MNPT by 3/8 Hose Barb Elbow Forged B
BHME-4M8B	1/4 MNPT By 1/2 Hose Barb Elbow Forged
BHME-6M4B-B	3/8 MNPT By 1/4 Hose Barb Elbow Barstock
BHME-6M5B	3/8 MNPT By 5/16 Hose Barb Elbow Forged
BHME-6M6B	3/8 MNPT By 3/8 Hose Barb Elbow Forged B
BHME-6M8B	3/8 MNPT By 1/2 Hose Barb Elbow Forged B
BHME-8M6B	1/2 MNPT By 3/8 Hose Barb Elbow Forged
BHME-8M8B	1/2 MNPT By 1/2 Hose Barb Elbow Forged
BHME-12M12B	3/4 MNPT by 3/4 Barb Elbow
BHME-16M12B	1 Inch MNPT by 3/4 Barb Elbow



BHMA RIGID BRASS BARSTOCK ADAPTER

The BHMA Series is a rigid multi-barbed Brass Barstock Adapter. It adapts from male NPT threads to barbs. Available MNPT sizes range from 1/16 inch to 1 inch. Available barb sizes range from 1/8 inch to 3/4 inch. Flow can be equal or reduced. The temperature range is -40° F to 160° F and the working pressure is 150 psi.

SKU	Description
BHMA-1M2B	1/16 inch MNPT by 1/8 inch Brass Multi-Barbed Brass Straight Adapter
BHMA-1M4B	1/16 inch MNPT by 1/4 inch Brass Multi-Barbed Brass Straight Adapter
BHMA-2M2B	1/8 inch MNPT by 1/8 inch Brass Multi-Barbed Brass Straight Adapter
BHMA-2M2B-SH	1/8 inch MNPT by 1/8 inch Brass Multi-Barbed Brass Straight Adapter Short .475
BHMA-2M3B	1/8 inch MNPT by 3/16 inch Brass Multi-Barbed Brass Straight Adapter
BHMA-2M4B	1/8 inch MNPT by 1/4 inch Brass Multi-Barbed Brass Straight Adapter
BHMA-2M5B	1/8 inch MNPT by 5/16 inch Brass Multi-Barbed Brass Straight Adapter
BHMA-2M6B	1/8 inch MNPT by 3/8 inch Brass Multi-Barbed Brass Straight Adapter
BHMA-2M8B	1/8 inch MNPT by 1/2 inch Brass Multi-Barbed Brass Straight Adapter
BHMA-4M2B	1/4 inch MNPT by 1/8 inch Brass Multi-Barbed Brass Straight Adapter
BHMA-4M4B	1/4 inch MNPT by 1/4 inch Brass Multi-Barbed Brass Straight Adapter
BHMA-4M6B	1/4 inch MNPT by 3/8 inch Brass Multi-Barbed Brass Straight Adapter
BHMA-4M8B	1/4 inch MNPT by 1/2 inch Brass Multi-Barbed Brass Straight Adapter
BHMA-6M4B	3/8 inch MNPT by 1/4 inch Brass Multi-Barbed Brass Straight Adapter
BHMA-6M6B	3/8 inch MNPT by 3/8 inch Brass Multi-Barbed Brass Straight Adapter
BHMA-6M8B	3/8 inch MNPT by 1/2 inch Brass Multi-Barbed Brass Straight Adapter

SKU	Description
BHMA-8M8B	1/2 inch MNPT by 1/2 inch Brass Multi-Barbed Brass Straight Adapter
BHMA-12M12B	3/4 inch MNPT by 3/4 inch Brass Multi-Barbed Brass Straight Adapter
BHMA-12M8B	3/4 inch MNPT by 1/2 inch Brass Multi-Barbed Brass Straight Adapter

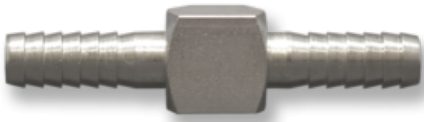


BHM SERIES

The BHM Series is a barstock Brass multi-barbed straight connector. Barb sizes range from 1/8 inch to 1 inch. The working temperature range is -40° F to 160° F. Maximum pressure rating is 150 psi. This fitting is designed to be used with a hose clamp.

SKU	Description
BHM-2	1/8 inch by 1/8 inch Brass Multi-Barbed Straight Connector
BHM-3	3/16 inch by 3/16 inch Brass Multi-Barbed Straight Connector
BHM-4	1/4 inch by 1/4 inch Brass Multi-Barbed Straight Connector
BHM-5	5/16 inch by 5/16 inch Brass Multi-Barbed Straight Connector
BHM-6	3/8 inch by 3/8 inch Brass Multi-Barbed Straight Connector
BHM-8	1/2 inch by 1/2 inch Brass Multi-Barbed Straight Connector
BHM-10	5/8 inch by 5/8 inch Brass Multi-Barbed Straight Connector
BHM-12	3/4 inch by 3/4 inch Brass Multi-Barbed Straight Connector

BHFT SERIES



The BHFT Series is a multi-barbed Brass Tee Adapter with female NPT threads to barbs. FNPT thread sizes are: 1/8 inch, 1/4 inch, and 3/8 inch. Barb sizes are 1/4 inch, 5/16 inch, and 3/8 inch. This series is in Barstock only. Available in Nickel Plate.

SKU	Description
BHFT-2F4B	1/8 inch FNPT by 1/4 inch Brass Multi-Barbed Tee Adapter
BHFT-2F5B	1/8 inch FNPT by 5/16 inch Brass Multi-Barbed Tee Adapter
BHFT-2F6B	1/8 inch FNPT by 3/8 inch Brass Multi-Barbed Tee Adapter
BHFT-4F4B	1/4 inch FNPT by 1/4 inch Brass Multi-Barbed Tee Adapter
BHFT-4F6B	1/4 inch FNPT by 3/8 inch Brass Multi-Barbed Tee Adapter
BHFT-6F6B	3/8 inch FNPT by 3/8 inch Brass Multi-Barbed Tee Adapter

BHFE SERIES



The BHFE Series is a Brass 90° Elbow, Female NPT threads to multi-barb Adapter. Available FNPT sizes are 1/8 inch, 1/4 inch, and 3/8 inch. Available barb sizes are 1/4 inch, 5/16 inch, 3/8 inch, and 1/2 inch. The temperature range is -40° F to 160° F. The maximum working pressure is 150 psi. This fitting is intended for use with a hose clamp.

SKU	Description
BHFE-2F4B	1/8 inch FNPT by 1/4 inch Brass Multi-Barbed 90° Elbow Adapter
BHFE-2F5B	1/8 inch FNPT by 5/16 inch Brass Multi-Barbed 90° Elbow Adapter
BHFE-2F6B	1/8 inch FNPT by 3/8 inch Brass Multi-Barbed 90° Elbow Adapter
BHFE-4F4B	1/4 inch FNPT by 1/4 inch Brass Multi-Barbed 90° Elbow Adapter
BHFE-4F5B	1/4 inch FNPT by 5/16 inch Brass Multi-Barbed 90° Elbow Adapter
BHFE-4F6B	1/4 inch FNPT by 3/8 inch Brass Multi-Barbed 90° Elbow Adapter
BHFE-4F8B	1/4 inch FNPT by 1/2 inch Brass Multi-Barbed 90° Elbow Adapter
BHFE-6F4B	3/8 inch FNPT by 1/4 inch Brass Multi-Barbed 90° Elbow Adapter
BHFE-6F6B	3/8 inch FNPT by 3/8 inch Brass Multi-Barbed 90° Elbow Adapter
BHFE-6F8B	3/8 inch FNPT by 1/2 inch Brass Multi-Barbed 90° Elbow Adapter
BHFE-8F6B	1/2 inch FNPT by 3/8 inch Brass Multi-Barbed 90° Elbow Adapter



BHFA SERIES

The BHFA Series is a Brass multi-barbed rigid female barstock adapter. It has Female NPT threads on the opposite side of the barbed end. Available FNPT thread sizes are 1/8 inch, 1/4 inch, 3/8 inch, 1/2 inch, and 3/4 inch. Available barb sizes range from 1/8 inch to 1 inch. Flow can be equal or reduced. The temperature range is -40° F to 160° F and the working pressure is 150 psi.

SKU	Description
BHFA-2F2B	1/8 inch FNPT by 1/8 inch Brass Multi-Barbed Adapter
BHFA-2F3B	1/8 inch FNPT by 3/16 inch Brass Multi-Barbed Adapter
BHFA-2F4B	1/8 inch FNPT by 1/4 inch Brass Multi-Barbed Adapter
BHFA-2F5B	1/8 inch FNPT by 5/16 inch Brass Multi-Barbed Adapter
BHFA-2F6B	1/8 inch FNPT by 3/8 inch Brass Multi-Barbed Adapter
BHFA-4F2B	1/4 inch FNPT by 1/8 inch Brass Multi-Barbed Adapter
BHFA-4F3B	1/4 inch FNPT by 3/16 inch Brass Multi-Barbed Adapter
BHFA-4F4B	1/4 inch FNPT by 1/4 inch Brass Multi-Barbed Adapter
BHFA-4F5B	1/4 inch FNPT by 5/16 inch Brass Multi-Barbed Adapter
BHFA-4F6B	1/4 inch FNPT by 3/8 inch Brass Multi-Barbed Adapter
BHFA-4F8B	1/4 inch FNPT by 1/2 inch Brass Multi-Barbed Adapter
BHFA-6F4B	3/8 inch FNPT by 1/4 inch Brass Multi-Barbed Adapter
BHFA-6F5B	3/8 inch FNPT by 5/16 inch Brass Multi-Barbed Adapter
BHFA-6F6B	3/8 inch FNPT by 3/8 inch Brass Multi-Barbed Adapter
BHFA-6F8B	3/8 inch FNPT by 1/2 inch Brass Multi-Barbed Adapter
BHFA-8F6B	1/2 inch FNPT by 3/8 inch Brass Multi-Barbed Adapter
BHFA-8F8B	1/2 inch FNPT by 1/2 inch Brass Multi-Barbed Adapter





BHBE SERIES

The BHBE Series is a forged Brass multi-barbed 90° Elbow connector. Barb sizes range from 1/8 inch to 1/2 inch. The working temperature range is -40° F to 160° F. Maximum pressure rating is 150 psi. This fitting is designed to be used with a hose clamp.

SKU	Description
BHBE-4-2	1/4 inch by 1/8 inch Brass Multi-Barbed Reducing Elbow Connector
BHBE-4-4	1/4 inch by 1/4 inch Brass Multi-Barbed Elbow Connector
BHBE-5-5	5/16 inch by 5/16 inch Brass Multi-Barbed Elbow Connector
BHBE-6-2	3/8 inch by 1/8 inch Brass Multi-Barbed Reducing Elbow Connector
BHBE-6-4	3/8 inch by 1/4 inch Brass Multi-Barbed Reducing Elbow Connector
BHBE-6-6	3/8 inch by 3/8 inch Brass Multi-Barbed Elbow Connector
BHBE-8-4	1/2 inch by 1/4 inch Brass Multi-Barbed Reducing Elbow Connector
BHBE-8-6	1/2 inch by 3/8 inch Brass Multi-Barbed Reducing Elbow Connector
BHBE-8-8	1/2 inch by 1/2 inch Brass Multi-Barbed Elbow Connector



BBX SERIES

This series of Brass connectors is composed of straight connectors, elbows, tees, and crosses. The working temperature range is -40° F to 160° F. The straights, tees, and crosses have equal barb sizes. The elbows are both equal and reducing. These fittings are designed for use with hose clamps.

SKU	Description
BBX-4	1/4 inch Brass Multi-Barbed Cross Connector
BBX-5	5/16 inch Brass Multi-Barbed Cross Connector
BBX-6	3/8 inch Brass Multi-Barbed Cross Connector

ATD SERIES



Adjustable Brass Tee adapter with UNF threads by single barbs.

SKU	DESCRIPTION
ATD-1018	10-32 by 1/8 Barb Adjustable Tee
ATD-10X1B	10-32 by 1/16 Barb Adjustable Tee

AED SERIES



The AED Series are Adjustable 10-32 inch male UNF to barb Brass elbows in 1/16 inch or 1/8 inch single barbs.

SKU	Description
AED-1018	10-32 inch Male UNF by 1/8 inch Barbed Adjustable Elbow
AED-10X1B	10-32 inch Male UNF by 1/16 inch Barbed Adjustable Elbow
AED-10X2B	10-32 inch Male UNF by 1/8 inch Barbed Adjustable Elbow



AC SERIES

These Connectors are Brass with male or female threads on one end with a nut for tightening. The other end is smooth for ease in attaching tubing. They will connect to any 10-32 threaded inlet. The OD tube sizes are 5/32", 1/4", and 3/8".

---

186-2 SERIES

The 186-2 Series Brass Barb Fittings are designed to fit .073 hole using a Loctite adhesive.

---



SKU	Description
186-2	1/16 inch Barbed Brass Bondable Insert

# INDEX

## **1**

186-2 Series 11

## **A**

AC Series 11

AED Series 10

ATD SERIES 10

## **B**

BBX Series 9

BHBE Series 9

BHFA Series 8

BHFE Series 7

BHFT Series 7

BHM Series 6

BHMA RIGID BRASS BARSTOCK ADAPTER 5

BHME Series 4

BHME45 Series 4

BHMT SERIES 3

BHT Series 3

## **D**

DCP Series 2