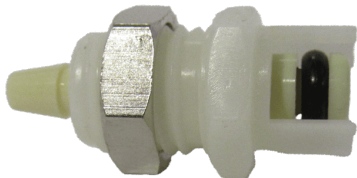




LUERS

LUERS

Luers: Where ISO Standards Meet Custom Excellence.
Pneuline manufactures Luer connectors for custom products to meet the needs of EOMs.



10AC-PB3 SERIES

1/16 Flow Panel Mount Insert, 7/16-24 UNF thread for 1/2 ID thru hole.
Available in 1/16 and 1/8 Barb Size molded from Natural or Black Acetal.

NON-VALVED	TUBE SIZE	LENGTH	WIDTH
10AC-PB2-01	1/16	.75	.50
10AC-PB2-01BLK	1/16	.75	.50
10AC-PB2-02	1/8	.75	.50
10AC-PB2-02BLK	1/8	.75	.50



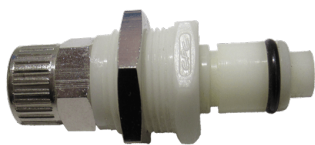
20AC PB3 SERIES

1/8 flow male insert, panel mount coupler available in 1/16, 1/8, 3/16 and 1/4 Barbs. product is made with and w/o shutoff.

Nickel plated Brass Panel nut, 5/8 hex with a 1/2-24 UNS threads. Panel mount thru hole requires .50 inches.

Non-valved	Valved	Description
20AC-PB3-01	20ACV-PB3-01	1/16 Hose Barb
20AC-PB3-02	20ACV-PB3-02	1/8 Hose Barb
20AC-PB3-03	20ACV-PB3-03	3/16 Hose Barb
20AC-PB3-04	20ACV-PB3-04	1/4 Hose Barb

40AC PB8 PANEL MOUNT INSERT COMPRESSION



40 Series insert, Panel mount with Compression Fitting. Available with Compression fitting for 1/4 or 3/8 OD tubing.

Nickel-plated brass panel nut and compression fitting

FDA/NSF Buna O-ring.

NON-VALVED	VALVED	TUBE ID/OD	LENGTH	WIDTH
40AC-PB8-04	40ACV-PB8-04	.170 ID/.250 OD	1.77"NV/ 1.91"V	.63
40AC-PB8-06	40ACV-PB8-06	.250 ID/.375 OD	1.90"NV/ 2.04"V	.63

MPV-L SERIES | MEDICAL GRADE LUER CHECK VALVES

Our MPV Luer Series Medical Grade Plastic Check Valves are manufactured, assembled, produced, 15 psi tested, and pre-packaged in a Class 7 Cleanroom environment

Check valves Made of Polypropylene, Polycarbonate, Radiation-Stable Polycarbonate, and Kynar 720®.

4 Main Connector Options: Male Inlet Luer with Rotating Collar to Female Luer, Male Inlet Rotating Collar to Male Rotating Collar, Female Inlet Luer Lock to Female Luer Lock, Female Inlet Luer Lock to Male Slip, Barb to ***

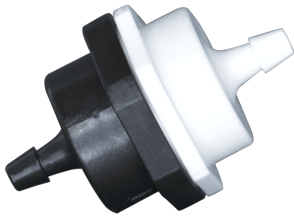
Diaphragm Options: Silicone

Flow Direction: Inlet to Outlet

***Custom Options: These Luers can be manufactured to fit with any of our Barb Connectors on the opposing end.

Barb Size options: 1/8 inch, 3/16 inch, 1/4 inch, 5/16 inch, 3/8 inch

SKU	Description
MPV-FLL-PC-S	IN: Female Luer OUT: Female Luer
MLLR-PC-S	IN: Male Luer OUT: Male Luer w/Rotating Collar
FLL-MLLR-PC-S	IN: Female Luer OUT: Male Luer w/ Rotating Collar
MLLR-FLL-PC-S	IN: Male Luer Out: Female Luer



SINGLE OR MULTI-BARB CHECK VALVE

This check valve is made of either white polypropylene, natural Nylon, or black or natural Kynar®. It is available with a Buna-N, EPDM, or Viton® seal. It has a 302 stainless steel spring. The cracking pressure is .25 or 1 psi. The maximum pressure is 125 psi and the maximum operating temperature is 140°F. The ports can be single or multi-barbed.



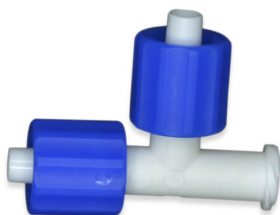
MLLR-MG SERIES

The MLLR-MG Series are rotating male luer to barb. It is available in clear ABS and radiation stable Polycarbonate. In addition, barb sizes are 1/32", 1/16", 3/32", 1/8", 5/32", 3/16" and 1/4". Separate locking rings are available in several colors of Nylon.



MLLR-1428 SERIES- MALE LUER

Male luer with 5/16” hex to 1/4-28 UNF thread. It is available in white and black Nylon, natural Polypropylene, clear Polycarbonate, and PVDF. Separate locking rings are offered in various nylon colors. 1/4-28 bottom sealing threads are also available.



ML SERIES

The ML Series are rotating male luers made of Nylon, Polypropylene, or Polycarbonate. Nut colors include black, red, and blue. See all parts listed below.

SKU	DESCRIPTION
MLLRF	Male Luer Swivel by Female Luer
MLLRM	Male Luer Swivel Connector
MLEF	Male Luer Swivel by Female Luer
MLEM	Male Luer Swivel by Male Luer Swivel
MLLFMTR	Male Luer Swivel/Female Luer/Male Luer Swivel
MLLFFTR	Male Luer SWIVEL/ Female LUER/ Female Luer



MFT & MFMT LUER TEE

Tee is available in 2 different configurations: 2 female thread style luers and 1 male luer and 2 male luers to 1 female thread style luer. They are both available in white and black Nylon, Polypropylene, and clear and radiation stable Polycarbonate. They may be used with a separate locking ring.

SKU	DESCRIPTION
MFT-PP	Female Luer by Female Luer Thread by Male Luer Tee Polypropylene
MFMT-PP	Male Luer by Male Luer by Female Luer Thread Tee Polypropylene



FLLT SERIES

The FLLT Series is a Female luer lug-style Tee connector made of white Nylon, natural Polypropylene, clear Polycarbonate, radiation-stable Polycarbonate, and PVDF.

SKU	DESCRIPTION
FLLT-WN	Female Luer Lug Style Tee White Nylon

FLLE-MSL SERIES



The FLLE-MSL Series is a Male-luer-to-female luer thread-style Elbow connector. Which is made of white & black Nylon, natural Polypropylene, clear Polycarbonate, & Radiation Stable Polycarbonate. Also, separate rotating lock rings are available.

SKU	DESCRIPTION
FLLE-MSL	Male Luer to Female Thread Style Luer Elbow
FLLE-MSL-PP	Male Luer to Female Thread Style Luer Elbow Polypropylene

FLLE- TSEC SERIES



The FLLE-TSEC Series is a Female luer thread-style Elbow connector that is engineered using a variety of high-quality materials. These connectors are available in Nylon, offering robust durability. in addition, they are crafted from natural Polypropylene, known for its chemical resistance and lightweight properties. Furthermore, the series includes connectors made from clear Polycarbonate, providing superior impact resistance and optical clarity. Lastly, the connectors are available in PVDF which is known for its high purity, strength, and resistance to solvents and acids. This material selection ensures that the FLLE-TSEC Series can meet a wide range of application requirements.

SKU	DESCRIPTION
FLLE-WN	Female Luer Lock Elbow White Nylon
FLLE-NPP	Female Luer Lock Elbow Natural Polypropylene
FLLE-PC	Female Luer Lock Elbow Polycarbonate
FLLE-PVDF	Female Luer Lock Elbow PVDF

MSSC SERIES



MSSC Series is a male slip-by male slip luer connector made of white Nylon, natural Polypropylene, clear Polycarbonate, and PVDF. Rotating collars are available.

FLLC-MG SERIES



The FLLC-MG Series is a Female luer lock coupler. It is available in white Nylon, Polypropylene, clear Polycarbonate, radiation Polycarbonate, and PVDF.

SKU	DESCRIPTION
FLLC-MG	Female Luer Lock Connector



FLLPC PANEL MOUNT SERIES

The FLLPC Series is a Panel-mounted female luer lock with a hose barb fitting. Panel mount threads are 1/4-28. The barbs on the inside of the panel are 1/16", 3/32" and 1/8". This luer lock is made of white and black Nylon, natural Polypropylene, clear polycarbonate, and PVDF. Optional color-coded panel rings and nuts are available.

SKU	DESCRIPTION
FLLPC-S-1B	Female Luer Lock to 1/16 Barb Bulkhead
FLLPC-S-2B	Female Luer Lock to 1/8 Barb Bulkhead
FLLPC-S-332B	Female Luer Lock to 3/32 Barb Bulkhead



MLLC SERIES

The MLLC Series is a male luer integral lock ring to female luer. It is available in white and black Nylon, natural Polypropylene, clear Polycarbonate, and Radiation Stable Polycarbonate.

SKU	DESCRIPTION
MLLC	Male Luer Lock to Female Luer Connector

MLL SERIES



Male luer by thread adapter. The bottom sealing threads are available in both UNF and NPT. The lock ring is available as integral or rotating. The integral lock ring luer is available in white and black Nylon, black Acetal, black and natural Polypropylene, clear Polycarbonate, and PVDF. The rotating lock rings are available in 7 colors of Nylon over Polypropylene or PVDF.

SKU	DESCRIPTION
MLL-10	Male Luer Lock to 10/32 UNF Thread
MLL-14-BSR	Male Luer Lock to 1/4-28 UNF Thread Bottom Seal
MLL-2M	Male Luer Lock to 1/8 MNPT
MLL-4M	Male Luer Lock to 1/4 MNPT

MSLE SERIES



Male slip luer by barb Elbow. The barb accommodates 3/32" ID tubing. This luer may be used with a separate rotating lock ring. It is available in white and black Nylon, black Polypropylene, and clear Polycarbonate.

SKU	DESCRIPTION
MSLE	Male Slip Luer Elbow by Barb

FSL & MSL SERIES



The FSL & MSL Series is a Male and Female Slip Luers in clear ABS, white Nylon, clear Polycarbonate, PVDF, and radiation-stable polycarbonate. Barb sizes range from 1/16" to 1/4". 1/4-28 male UNF threads are also available.

SKU	DESCRIPTION
FSL-I-18	Female Slip Luer to White Nylon 1/8 Barb
FSL-MG-116	Female Slip Luer to 1/16 Barb
FSL-MG-332	Female Slip Luer to 3/32 Barb
FSL-MG-18	Female Slip Luer to 1/8 Barb
FSL-S-532	Female Slip Luer to 5/32 Barb
MSL-14	Male Slip Luer to 1/4-28 Male UNF
MSL-MG-116	Male Slip Luer to 1/16 Barb
MSL-MG-332	Male Slip Luer to 3/32 Barb
MSL-MG-18	Male Slip Luer to 1/8 Barb
MSL-S-1B-NK	Male Slip Luer to 1/16 Barb
MSL-S-532	Male Slip Luer to 5/32 Barb
MSL-U-316	Male Slip Luer to 3/16 Barb

FLL UNF SERIES



The FLL series female luers have an integrated filter, making them ideal for filtration applications. The nylon bodies and nylon filters are available in various micron ratings: 10, 30, 48, 70, 100, 140, and 190 microns. This range allows for flexibility in filtration needs, making them suitable for various applications. Polypropylene bodies with Polypropylene filters of 105 or 150 microns are available. These filters come in UNF sizes of 10-32 inch or 1/4-28 inch.

SKU	Description
FLL-14-NK	Female Luer Lock by 1/4-28 UNF PVDF
FLL-14-PP	Female Luer Lock by 1/4-28 UNF Polypropylene
FLL-14-WN	Female Luer Lock by 1/4-28 UNF White Nylon

SKU	Description
FLL-14-PC	Female Luer Lock by 1/4-28 UNF Polycarbonate
FLL-1032-K-70N	Female Luer Lock by 10-32 UNF PVDF 70 Micron Nylon
FLL-1032-N-10N	Female Luer Lock by 10-32 UNF Nylon 10 Micron Nylon
FLL-1032-PP-105N	Female Luer Lock by 10-32 UNF Polypropylene 105 Micron Nylon
FLL-18-NK	Female Luer Lock by 1/8 MNPT
FLL-316-NK	Female Luer Lock by 3/16 MNPT

QCD SERIES - LUER DUCKBILL CHECK VALVES



The QCD Series Luer Check Valves are made of Polycarbonate and have a Silicone duck bill. The low cracking pressure is 0.433 psi, which determines when the component starts to open. The OD sizes are 5/64 inch, 7/64 inch, and 9/64 inch. Also available with female and male Luer Locks.

SKU	Description
QCD-564	5/64 inch OD Tubing Polycarbonate Luer Check Valve
QCD-764	7/64 inch OD Tubing Polycarbonate Luer Check Valve
QCD-964	9/64 inch OD Tubing Polycarbonate Luer Check Valve
QCD-FM	Female by Male Luer Lock Polycarbonate Check Valve