



CHECK VALVES

CHECK VALVES



PLASTIC CHECK VALVES

Plastic check valves are used for a diverse range of applications. Transportation, chemical, car wash systems, water applications, pools and spas, medical equipment, and biopharmaceutical applications. The types of valves are various for the application. Diaphragm valves, duckbill valves, poppet valves, ball & spring known as ball checks, and Self-closing valves. Inline valves come in a number of thread and barb sizes, and for medical devices requiring luers, ISO 594 and 80369-7 and bond-in tubing sizes.



**20 SERIES GREY POLYPROPYLENE INLINE
HOSE BARB SOCKET**

Quick Coupler . Grey chemical resistant polypropylene. 1/8 flow .



DIAPHRAGM CHECK VALVES

Check Valves: Diaphragm Check Valves

VC-IG SERIES



The VC-IG Series Plastic Check Valves have housing molded of Polysulfone or Polypropylene with either a POM or Silicone disc. Cracking pressure for these units is .8 H²O or .028 psi. The 10-32 inch units have a cracking pressure of 10 H²O or .36 psi. These check valves were made to be used in low pressure applications. Reverse flow at 1 psi is available as follows: Polypropylene with Silicone: .20 SCIM, Polysulfone with POM 2.98 SCIM, Polysulfone with POM 1.00 SCIM R2, Polysulfone with Silicone .20 SCIM, and Polysulfone with Silicone .06 SCIM 10-32 inch Female ports only. Maximum pressure is 10 psi excluding the 10-32 inch port which is rated for 75 psi.

SKU	Description
VC-IG-1032F-PSS	1032 Female PS Silicon Check Valve
VC-IG-1B-PPS	1/16 Barb PP Silicone Check Valve
VC-IG-1B-PSC R2	1/16 Barb PS Celcon® Check Valve
VC-IG-1B-PSS	1/16 Barb PS Silicone Check Valve

SKU	Description
VC-IG-1S-PPS	1/16 Shaft PP Silicone Check Valve
VC-IG-1S-PSC	1/16 Shaft PS Celcon® Check Valve
VC-IG-1S-PSC R2	1/16 Shaft PS Celcon® Check Valve
VC-IG-1S-PSS	1/16 Shaft PS Silicone Check Valve
VC-IG-2B-PPS	1/8 Barb PP Silicone Check Valve
VC-IG-2B-PSC R2	1/8 Barb PS Celcon® Check Valve
VC-IG-2B-PSS	1/8 Barb PS Silicone Check Valve



MPV-L SERIES | MEDICAL GRADE LUER
CHECK VALVES

Our MPV Luer Series Medical Grade Plastic Check Valves are manufactured, assembled, produced, 15 psi tested, and pre-packaged in a Class 7 Cleanroom environment

Check valves Made of: Polypropylene, Polycarbonate, Radiation-Stable Polycarbonate, and Kynar 720®.

4 Main Connector Options: Male Inlet Luer with Rotating Collar to Female Luer, Male Inlet Rotating Collar to Male Rotating Collar, Female Inlet Luer Lock to Female Luer Lock, Female Inlet Luer Lock to Male Slip, Barb to ***

Diaphragm options: Silicone

Flow Direction: Inlet to Outlet

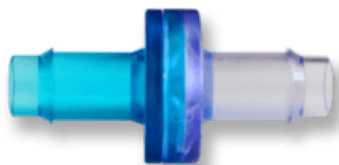
***Custom Options: These Luers can be manufactured to fit with any of our Barb Connectors on the opposing end.

Barb Size options: 1/8 inch, 3/16 inch, 1/4 inch, 5/16 inch, 3/8 inch

MPV-L Series Product List

SKU	Description
MPV-FLL-PC-S	IN: Female Luer OUT: Female Luer
MLLR-PC-S	IN: Male Luer OUT: Male Luer w/Rotating Collar
FLL-MLLR-PC-S	IN: Female Luer OUT: Male Luer w/ Rotating Collar
MLLR-FLL-PC-S	IN: Male Luer Out: Female Luer

MPV SERIES | MEDICAL GRADE CHECK VALVES



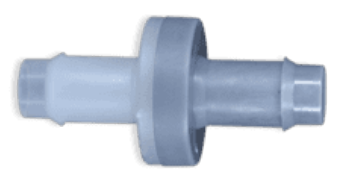
MPV Series Medical Grade Check Valves are manufactured and tested in a Class 7 Cleanroom environment making them ideal for medical applications. All cleanroom check valves are tested in our clean room environments at 15 PSI. Resin options include: Nylon, Polypropylene, Polycarbonate, Radiation-stable Polycarbonate, and Kynar® 720. Other custom resins are available at the customer’s request. Sizes Available: 3/16 inch, 5/16 inch, and 3/8 inch high flow. Diaphragms are made of Silicone USP Class VI or FDA Viton®. Our custom molding options allow for customer specific needs or requirements which include resin options as well as diaphragm options.

[Download](#) the MPV Series Flyer

Medical Grade Plastic Diaphragm Check Valves

SKU	Description
MPV-2B-NS	1/8 Barb Nylon / FDA Silicone Check Valve
MPV-2B-PCS	1/8 Barb Polycarbonate / Natural FDA Silicone Check Valve
MPV-3B-PCS	3/16 Barb Polycarbonate / Silicone .020 VI Check Valve
MPV-4B-KS	1/4 Barb Standard PVDF/ Silicone Check Valve
MPV-6B-KS	3/8 Barb PVDF / USP Class VI Silicone Check Valve
MPV-6B-PCRS	3/8 Barb Polycarbonate / Silicone USP class VI Check Valve

MPV SERIES | INDUSTRIAL GRADE CHECK VALVES



These MPV Series Industrial Grade Plastic Diaphragm Check Valves are Manufactured by Pneuline Supply and used in a variety of industries such as: Printing, Robotics, Waste Water, chemical applications, lab and industrial applications. Our custom molding options allow for customer specific needs or requirements which include resin options, connector variations, diaphragm selections, and custom laser marking. To make your product unique, we offer custom laser marking for company brand or for identification purposes I.E. part number sequencing, lot numbers.

Resin options include: Kynar® 720 PVDF, Acetal, Nylon, Glass-filled Nylon, Polypropylene, . Other custom resins are available at the customer’s request.

Barbed connectors are available in: 1/8 inch, 3/16 inch, and 1/4 inch standard flow or 1/4 inch, 5/16 inch, and 3/8 inch high flow.

Diaphragms are made of Fluorosilicone, EPDM, Viton®, or Kalrez® FFKM

SKU	Description
MPV-2B-KK	1/8 Barb PVDF / Kalrez® Check Valve
MPV-2B-KV	1/8 Barb PVDF / FKM Check Valve

SKU	Description
MPV-2B-NF	1/8 Barb Nylon / Fluorosilicone Check Valve
MPV-2B-NV	1/8 Barb Nylon / FKM Check Valve
MPV-3B-AF	3/16 Barb Acetal / Fluorosilicone Check Valve
MPV-3B-KV	3/16 Barb PVDF / FKM Check Valve
MPV-3B-NF	3/16 Barb Nylon / Fluorosilicone Check Valve
MPV-3B-NV	3/16 Barb Nylon / FKM Check Valve
MPV-3B-PF	3/16 Barb Polypropylene / Fluorosilicone Check Valve
MPV-3B-PV	3/16 Barb Polypropylene / FKM Check Valve
MPV-4B-HKK	1/4 Barb Hi-Flow PVDF / Kalrez Check Valve
MPV-4B-HKV	1/4 Barb Hi-Flow PVDF / FKM Check Valve
MPV-4B-HNF	1/4 Barb Hi-Flow Nylon / Fluorosilicone Check Valve
MPV-4B-HNV	1/4 Barb Hi-Flow PVDF / FKM Check Valve
MPV-4B-KV	1/4 Barb Standard Flow PVDF / FKM Check Valve
MPV-4B-NF	1/4 Barb Nylon / Fluorosilicone
MPV-4B-NV	1/4 Barb Nylon / FKM Check Valve
MPV-4B-PF	1/4 Barb Polypropylene / Fluorosilicone Check Valve
MPV-4B-PV	1/4 Barb Polypropylene / FKM Check Valve
MPV-5B-AF	5/16 Barb Acetal / Fluorosilicone Check Valve
MPV-5B-KK	5/16 Barb PVDF / Kalrez® Check Valve
MPV-5B-KV	5/16 Barb PVDF / FKM Check Valve
MPV-5B-NF	5/16 Barb Nylon / Fluorosilicone Check Valve
MPV-5B-NV	5/16 Barb Nylon / FKM Check Valve
MPV-6B-KV	3/8 Barb PVDF /FKM Check Valve
MPV-6B-NF	3/8 Barb Nylon / Fluorosilicone Check Valve
MPV-6B-NV	3/8 Barb Nylon / FKM Check Valve



MPV SERIES | FOOD & BEVERAGE GRADE CHECK VALVES

These Potable NSF 51/62 Approved Diaphragm Check Valves are Food & Beverage safe. These valves are made without grease or oil making also making them ideal for laboratory applications. Housing body material options include: POM and PVDF. Diaphragm options are: EPDM and Santoprene™ disks. Sizes we offer include 1/8, 3/16, 1/4, 5/16, and 3/8 valves.

[Download The Flyer](#)

NSF Rated Plastic Diaphragm Check Valves NSF 51/61 Approved Check Valves



MPV SERIES | AUTOMOTIVE GRADE CHECK VALVES

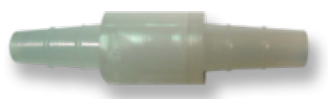
Pneuline Supply manufactures Plastic Check Valves that are ideal for Automotive applications. Inlets are made of either Natural Nylon or Glass-Filled Natural Nylon. Outlets are made of either Black Nylon or Glass-Filled Black Nylon. The Barbed connectors are available in: 1/8 inch, 3/16 inch, and 1/4 inch Standard Flow or 1/4 inch, 5/16 inch, and 3/8 inch High Flow. Diaphragms are made of either Fluorosilicone or EPDM. Customer specific unique laser part marking is available for identifiers such as: Part number sequencing, Lot number, or Company name.

Automotive Grade Plastic Diaphragm Check Valves that are ideal for Automotive applications made of either Natural Nylon or Glass-Filled Natural Nylon.

SKU	Description
MPV-2B-NE	1/8 Barb Nylon / EPDM Check Valve
MPV-2B-NF	1/8 Barb Nylon / Fluorosilicone Check Valve
MPV-3B-NE	3/16 Barb Nylon / EPDM Check Valve
MPV-3B-NF	3/16 Barb Nylon / Fluorosilicone Check Valve
MPV-3B-PE	3/16 Barb Polypropylene / EPDM Check Valve
MPV-4B-HKE	1/4 Barb Hi-Flow PVDF / EPDM Check Valve
MPV-4B-NE	1/4 Barb Hi-Flow Nylon / EPDM Check Valve
MPV-4B-NF	1/4 Barb Nylon / Fluorosilicone Check Valve
MPV-5B-NE	5/16 Barb Hi-Flow Nylon / EPDM Check Valve
MPV-5B-NF	5/16 Barb H-Flow Nylon / Fluorosilicone Check Valve

SKU	Description
MPV-5B-R530-E	5/16 Barb High-Flow Glass-Filled Nylon / EPDM Check Valve
MPV-6B-NE	3/8 Barb High-Flow Nylon / EPDM Check Valve
MPV-6B-NF	3/8 Barb Hi-Flow Nylon / Fluorosilicone Check Valve
MPV-6B-R530-E	3/8 Barb High-Flow Glass-Filled Nylon / EPDM Check Valve

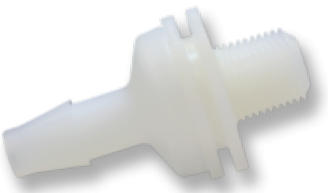
CSP SERIES - POLYETHYLENE CHECK VALVES



The CSP Series Check Valves have a Polyethylene housing with a Neoprene disc for the 1/4 inch size and a Polyethylene disc for the 3/8 inch size. The maximum pressure for these check valves is 20 psi.

SKU	Description
CSP-38	3/8 inch to 9/16 inch ID Polypropylene Check Valve

CMKV SERIES



The CMKV Series Plastic Check Valves are 1/8 inch Male NPT by Barb sizes of 1/8 inch, 3/16 inch, 1/4 inch, and 3/8 inch. The flow is from thread to barb. Material / Disc combinations are available in PVDF with FKM, Polypropylene with FKM, Polycarbonate with Neoprene, Polycarbonate with Silicone, Nylon with Silicone, and Nylon with Neoprene.

SKU	Description
CMKV-18B	1/8 MNPT by 1/8 Barb PVDF/FKM Check Valve
CMKV-14B-NS	1/8 MNPT by 1/4 Barb Nylon/Silicone Check Valve
CMKV-316B	1/8 MNPT by 3/16 Barb PVDF/FKM Check Valve

CIS SERIES - ACRYLIC DIAPHRAGM POPPET CHECK VALVES



This is a non-barbed Check Valve with a white tubing port inlet and clear tubing port outlet. The body is made of Acrylic with a blue Silicone diaphragm. This check valve is pressure rated at 45 psi. The port sizes are both .130" and will accommodate 1/16" ID soft Silicone tubing as well as other tubing of 1/8" and 3/32" ID. It is manufactured in an ISO Class 8 Cleanroom and is Gamma, E-beam and EtO sterilizable. This valve is made of Class VI approved materials, it is ultrasonically welded and is 100% inline tested for backflow and weld leaks.

Acrylic Diaphragm Poppet Check Valves

SKU	Description
CIS-6383	Check Valve .130 port Acrylic/Silicone .29CP

BBCV SERIES



The BBCV Series Check Valve has a Male Slip Luer with 30 psi back pressure and 1/4 psi inlet cracking pressure. This series comes in ABS or Polycarbonate housing, both with Silicone Discs.

SKU	Description
BBCV-MLFL-ABS	Male Luer by Female Luer ABS Check Valve .25 psi Crack
BBCV-MLFL-01-ABS	Male Luer by Female Luer ABS Check Valve .01 psi Crack
BBCV-MLML-ABS	Male Luer by Male Luer ABS Check Valve .25 psi Crack



PLASTIC BALL CHECK VALVES

MCV SERIES - CHECK VALVES



The MCV Series Check Valves are available in various materials: White Nylon is standard, with Black Nylon optional; White Polypropylene is standard with Black Polypropylene optional. Black PVDF is also available. O-ring Seals are Buna-N, EPDM, Viton®, Silicone. The standard spring is 302 Stainless Steel with 316 Stainless Steel ball. The maximum operating pressure is 125 psi. and the maximum operating temperature is 140° F. The Standard barb inlet and outlet sizes are for 1/8 inch, 3/16 inch, and 1/4 inch ID tubing. Outlet side is available with a 1/8 Male NPT or ¼ MNPT. PVDF is sold with PTFE seals and a Hastelloy Spring.

Spring Options:

- 1/2 psi - 302 Stainless
- 1 psi - 302 Stainless
- 2 psi - 302 Stainless
- 3 psi - 302 Stainless

MCV SERIES PRODUCT LIST

Pneuline Part Number	Size	Body	Seal	PSI
MCV-4B-PPE-1	1/4 (4B)	Polypropylene	EPDM	1 PSI
MCV-4B-NV-1/2	1/4 (4B)	Nylon	Viton ®	1/2 PSI
MCV-4B-NV-1	1/4 (4B)	Nylon	Viton ®	1 PSI
MCV-4B3B-NB-2	1/4 (4B) by 3/16 (3B)	Nylon	Buna	2 PSI
MCV-3B-PPV-3	3/16 (3B)	Polypropylene	Viton ®	3 PSI
MCV-3B-PPV-1/2	3/16 (3B)	Polypropylene	Viton ®	1/2 PSI
MCV-3B-PPV-1	3/16 (3B)	Polypropylene	Viton ®	1 PSI
MCV-3B-PPE-2	3/16 (3B)	Polypropylene	EPDM	2 PSI
MCV-3B-PPE-1/2	3/16 (3B)	Polypropylene	EPDM	1/2 PSI
MCV-3B-PPE-1	3/16 (3B)	Polypropylene	EPDM	1 PSI
MCV-3B-NV-1	3/16 (3B)	Nylon	Viton ®	1 PSI
MCV-3B-NV-2	3/16 (3B)	Nylon	Viton ®	2 PSI
MCV-3B4B-PPV-3	3/16 (3B) by 1/4 (4B)	Polypropylene	Viton ®	3 PSI
MCV-3B4B-PPE-3	3/16 (3B) by 1/4 (4B)	Polypropylene	EPDM	3 PSI
MCV-2B-PPV-2	1/8 (2B)	Polypropylene	Viton ®	2 PSI
MCV-2B-PPV-1/2	1/8 (2B)	Polypropylene	Viton ®	1/2 PSI
MCV-2B-PPE-3	1/8 (2B)	Polypropylene	EPDM	3 PSI
MCV-2B-PPE-2	1/8 (2B)	Polypropylene	EPDM	2 PSI
MCV-2B-PPE-1/2	1/8 (2B)	Polypropylene	EPDM	1/2 PSI
MCV-2B-PPE-1	1/8 (2B)	Polypropylene	EPDM	1 PSI
MCV-2B-PPB-2	1/8 (2B)	Polypropylene	Buna	2 PSI
MCV-2B-NV-1/2	1/8 (2B)	Nylon	Viton ®	1/2 PSI
MCV-2B-NV-1	1/8 (2B)	Nylon	Viton ®	1 PSI
MCV-2B-NB-1	1/8 (2B)	Nylon	Buna	1 PSI
MCV-2B4B-PPV-2	1/8 (2B) by 1/4 (4B)	Polypropylene	Viton ®	2 PSI
MCV-2B4B-PPE-1/2	1/8 (2B) by 1/4 (4B)	Polypropylene	EPDM	1/2 PSI
MCV-2B2M-PPV-2	1/8 (2B) 1/8 MNPT	Polypropylene	Viton ®	2 PSI
MCV-4B4B-PPV-1	1/4 (4B)	Polypropylene	Viton ®	1 PSI

DCE SERIES



The DCE Series is a rigid male Check Valve elbow made of Acetal that is NSF 51® certified and meets NSF 61® requirements. The available male threads are: 1/8 inch, 1/4 inch, and 3/8 inch. OD tubing sizes are 5/32 inch, 3/16 inch, 1/4 inch, 5/16 inch, 3/8 inch, and 1/2 inch. The working pressure at 77° F is 232 psi, and at 158° F it is 145 psi. The working temperature range is from 32° F to 158° F. It can be used for compressed air, inert gases, water, and other fluids.

SKU	Description
DCE-2M-14	1/8 MNPT by 1/4 OD Push-in Elbow Spring-loaded Check Valve
DCE-4M-14	1/4 MNPT by 1/4 OD Push-to Connect Elbow Check Valve
DCE-6M-14	3/8 MNPT by 1/4 OD Push-to Connect Elbow Check Valve

CVK SERIES - MALE CHECK VALVES



The CVK Series are male-by-male Check Valves made of natural PVDF. It has a 316 Stainless Steel spring and ball Viton® O-ring. Other O-ring options are EPDM and Fluorosilicone (blue). These check valves have a 1-2.5 psi cracking pressure with a maximum operating pressure of 220 psi and a maximum working temperature of 180°F. Available with a Hastelloy® spring and PTFE ball. Available Male NPT thread sizes are: 1/8 inch, 1/4 inch, 3/8 inch, and 1/2 inch.

SKU	Description
CVK-2M	1/8 inch NPT Check Valve PVDF
CVK-4M	1/4 NPT Check Valve PVDF
CVK-6M	3/8 inch NPT Check Valve PVDF
CVK-6M-HPTFE	3/8 inch M Check Valve PVDF, Hastelloy®/PTFE/FKM
CVK-8M	1/2 inch NPT Check Valve PVDF
CVK-8M-HPTFE	1/2 inch M Check Valve PVDF, Hastelloy®/PTFE/FKM



CARTRIDGE CHECK VALVES

CRV SERIES - CARTRIDGE INSERT VALVES



These Cartridge Insert Valves can be installed into tubing lines or glued into manifolds. The optional housing materials are Nylon, Polypropylene, Acrylic, Acetal, PVDF and Polycarbonate. Springs are 316 Stainless Steel or Hastelloy® (1/2 psi). O-Rings are of Buna-N, EPDM, FKM, Silicone and Kalrez. Available sizes are 1/4", 5/16", 3/8", 1/2", 5/8" and 3/4" OD. Standard crack pressure for all valves except 3/4" OD is 3" H₂O 0.1 psi, 5 psi or 1.5 psi.

SKU	DESCRIPTION
CRV-12-11-PPB	1/2" Polypropylene / Buna Seals 11 psi Insert Valve
CRV-14-10PPE	1/4" Polypropylene / EPDM 10 psi Insert Valve
CRV-14-3-PPE	1/4" Polypropylene / EPDM 3 psi Insert Valve
CRV-14-PB-.5	1/4" Polypropylene / Buna .5 psi Insert Valve
CRV-14-PB-1	1/4" Polypropylene / Buna 1 psi Insert Valve
CRV-14-PB-1.5	1/4" Polypropylene / Buna 1.5 psi Insert Valve
CRV-14-PB-2	1/4" Polypropylene / Buna 2 psi Insert Valve
CRV-14-PE-.1	1/4" Polypropylene / EPDM .1 psi Insert Valve
CRV-14-PV-.1	1/4" Polypropylene / FKM .1 psi Insert Valve

SKU	DESCRIPTION
CRV-14-PV-.5	1/4" Polypropylene / FKM .5 psi Insert Valve
CRV-14-PV-1	1/4" Polypropylene / FKM 1 psi Insert Valve
CRV-14-PV-10	1/4" Polypropylene / FKM 10 psi Insert Valve
CRV-14-PV-2	1/4" Polypropylene / FKM 2 psi Insert Valve
CRV-14-PV-5	1/4" Polypropylene / FKM 5 psi Insert Valve
CRV-38-2-PPV	3/8" Polypropylene / FKM 2 psi Insert Valve
CRV-38-PB-7.5 WC	3/8" Polypropylene / Buna 7.5 WC Insert Valve
CRV-38-PPB-1	3/8" Polypropylene / Buna 1 psi Insert Valve
CRV4-1/10-NB	1/4" 1/10 Nylon / Buna Insert Valve
CRV4-1/2H-PPV	1/4" 1/2# Hastelloy® Polypropylene / FKM O-Ring Insert Valve
CRV4-10PPE	1/4" 10# Polypropylene / EPDM Insert Valve
CRV4-4PPB	1/4" 4# Polypropylene / Buna Insert Valve
CRV-4-P-V-.5	1/4" Polypropylene / FKM .50 psi Insert Valve
CRV-4-P-V-1	1/4" Polypropylene / FKM 1 psi Insert Valve
CRV-4-PV-6WC	1/4" Polypropylene / FKM 6 inch WC Insert Valve
CRV-4-WP-V-.25	1/4" Polypropylene / FKM .25 psi Insert Valve
CRV-4-WP-V-.5	1/4" Polypropylene / FKM .50 psi Insert Valve
CRV532-14PC	5/32" 14# Polycarbonate Insert Valve
CRV-532-2.5PC	5/32" 2.5# Polycarbonate Insert Valve
CRV-532-2PC	5/32" 2# Polycarbonate Insert Valve
CRV532-4 P	5/32" 4# Polycarbonate Insert Valve



DUCKBILL CHECK VALVES

DUCKBILL CHECK VALVES

Pneuline Supply offers several different duckbill check valve options. Duckbill check valves are usually used in the medical industry, for example in situations where backflow is a main concern.

QCD SERIES - LUER DUCKBILL CHECK VALVES



The QCD Series Luer Check Valves are made of Polycarbonate and have a Silicone duck bill. The low cracking pressure is 0.433 psi, which determines when the component starts to open. The OD sizes are: 5/64 inch, 7/64 inch, and 9/64 inch. Also available with female and male Luer Locks.

SKU	Description
QCD-564	5/64 inch OD Tubing Polycarbonate Luer Check Valve
QCD-764	7/64 inch OD Tubing Polycarbonate Luer Check Valve
QCD-964	9/64 inch OD Tubing Polycarbonate Luer Check Valve
QCD-FM	Female by Male Luer Lock Polycarbonate Check Valve

CNV DUCKBILL CHECK VALVE



The CNV Series Check Valve is made of Polypropylene and is available in three sizes for 1/16 inch, 5/32 inch, or 1/8 inch ID tubing. The 1/16 inch ID tubing has either a 3 inch water column or an 8 inch water column opening pressure. The 8 inch water column is available with an EPDM or ECH duckbill. The 3 inch water column is offered with only an EPDM duckbill. The 1/8 inch size has a 3 inch water column with an EPDM duckbill. The 5/32 inch size has a 3 inch water column with an EPDM duckbill. A 3 inch water column equals 1/10 psi, and an 8 inch water column equals 1/3 psi. The maximum pressure for this check valve is 30 psi and the temperature range is from 35° F to 150° F.

SKU	Description
CNV-16S-PPEP-3	1/16 inch ID EPDM Duckbill Check Valve 3" water column
CNV-16S-PPEP-8	1/16 inch ID EPDM Duckbill Check Valve 8" water column
CNV-16S-PPEPC-8	1/16 inch ID ECH Duckbill Check Valve 8" water column
CNV-18S-PPEP	1/8 inch ID EPDM Duckbill Check Valve 3" water column
CNV-532S-PPEP-3	5/32 inch ID EPDM Duckbill Check Valve 3" water column

CDV NON-BARBED CHECK VALVE
(POLYCARBONATE AND ACRYLIC
AVAILABLE)



This is a non-barbed Acrylic or Polycarbonate Check Valve that has a Silicone duck bill. This is a normally open, one-way check valve. It prevents back flow leakage with minimal pressure. The ends of the ports measure .134 to accommodate 1/8" ID tubing. These fittings are also available with male and female Luer Locks.

SKU	Description
CDV-125	1/8 inch ID Acrylic Luer Duckbill Check Valve
CDV-125MLL	1/8 inch ID to Male Luer Lock Acrylic Duckbill Check Valve
CDV-125-PC	1/8 inch ID Polycarbonate Duckbill Check Valve
CDV-18	1/8 inch ID Tubing Acrylic Duckbill Check Valve
CDV-FL-125	1/8 inch ID to Female Luer Lock Acrylic Duckbill Check Valve
CDV-FLL125	Female Luer Lock by .125
CDV-FLLML	Female Luer Lock to Male Slip Luer Acrylic Duckbill Check Valve
CDV-FLLMLL	Female Luer Lock to Male Luer Lock Acrylic Duckbill Check Valve
CDV-ML	1/8 inch ID Male Luer Acrylic Duckbill Check Valve

ASD SERIES



These ASD Series single barbed enlarging duckbill Check Valves are available in several materials such as Nylon (N), Polypropylene (PP), or Polycarbonate (PC) housing. These Check Valves have a Silicone diaphragm. The available barb sizes are 1/8 inch by 3/16 inch and 3/16 inch by 1/8 inch.

SKU	Description
ASD-2B	1/8 Barb
ASD-2B3B	1/8 Barb by 3/16 Barb
ASD-3B	3/16 Barb
ASD-3B2B	3/16 Barb by 1/8 Barb



POPPET CHECK VALVES

Poppet check valves offer an easy way to control the timing and quantity of the flow of gas or vapor.

PPCV SERIES



The PPCV Series Brass Poppet Check Valve is available with inlet sizes of 1/4 inch, 3/8 inch, 1/2 inch, and 3/4 inch Female NPT threads and 3/8 inch and 1/2 inch Male NPT threads. Outlet sizes are 1/4 inch, 3/8 inch, 1/2 inch, and 3/4 inch Female NPT threads. End body options are 1/4 inch and 3/8 inch Male Flare, and 1/4 inch Female Flare. Seal options are Buna-N, EPDM and Viton®. Cracking pressure on the 302 Stainless Steel spring is 1 psi (standard). Maximum operating pressure is 1200 psi and the maximum operating temperature is 180° F.

SKU	Description
PPCV-12F	1/2 inch Female Brass Poppet Check Valve
PPCV-12MF	1/2 inch Male 1/2 inch Female Brass Poppet Check Valve
PPCV-14	1/4 inch Female Brass Poppet Check Valve
PPCV-14F	1/4 inch Female Brass Poppet Check Valve
PPCV-14F-V	1/4 inch Female Brass Poppet Check Valve 1 psi FKM

SKU	Description
PPCV-34F	3/4 inch Female Brass Poppet Check Valve
PPCV-34MF	3/4 inch Male 3/4 inch Female Brass Poppet Check Valve
PPCV-38F	3/8 inch Female Brass Poppet Check Valve
PPCV-38MF	3/8 inch Male 3/8 inch Female Brass Poppet Check Valve



PCVM SERIES

SKU	DESCRIPTION
PCVM-4	1/4 Push-to-Connect Polypropylene Check Valve 2.75 psi
PCVM-4-2M	1/4 Push-to-Connect by 1/8 MNPT Check Valve .75 psi
PCVM-4-3	1/4 Push-to-Connect Polypropylene 2.75 psi
PCVM-4-5	1/4 Push-to-Connect Polypropylene Check Valve 5 psi
PCVM-4PP	1/4 Push-to-Connect Polypropylene Check Valve .3 psi
PCVM-6	3/8 Push-to-Connect Polypropylene Check Valve .3 psi

NCV NICKLE PLATED BRASS POPPET CHECK VALVE



The NCV Series Nickel-Plated Brass Poppet Check Valve has options of Buna-N, EPDM or FKM seals. The operating pressure is 0 to 125 psi and the flow rate ranges from 2.5 to 9.5 scfm. Input and output port sizes are 10-32 inch UNF and 1/16 inch Barb.

SKU	Description
NCV-10F10F	10-32 Female to Female Nickel-Plated Poppet Check Valves
NCV-10F10M	10-32 Female to Male Nickel-Plated Poppet Check Valves
NCV-10F1B	10-32 Female 1/16 inch Barb Nickel-Plated Poppet Check Valves
NCV-10M10F	10-32 Male to Female Nickel-Plated Poppet Check Valves
NCV-10M1B	10-32 Male 1/16 inch Barb Nickel-Plated Poppet Check Valves
NCV-1B1B	1/16 inch Barb to 1/16 inch Barb Nickel-Plated Poppet Check Valves

MSV SERIES | SPRING-LOADED CHECK VALVES



PneuLine Supply, Inc. manufactures the MSV Series inline spring-loaded check valves in a class 8 clean room environment specifically for use in medical applications. Custom molding allows for customer specific requirements which include resin options, connector variations, and O-ring selections. Resin options that are available include: Polycarbonate, Radiation-stable Polycarbonate, and Kynar® 720 (PVDF). Other custom resins are available upon request. Barbed connectors are available in 1/8 inch, 3/16 inch, and 1/4 inch standard flow or 1/4 inch high flow, 5/16 inch, and 3/8 inch. Springs are made of 316 Stainless Steel or Hastelloy® in .022 psi, .25 psi, .50 psi, 1 psi, 5 psi, or 10 psi. Passivated springs are available. O-ring options are: Silicone USP class VI, Fluorosilicone, EPDM, Viton®, or Kalrez®. To make this product truly unique, we offer custom laser marking for identification purposes such as part number sequencing, lot numbers, or company name.

*Poppet and Piston are optional.

[Download](#) the MSV Series Flyer

SKU	Description
MSV-2B-AC-6	1/8 Valve Acetal EPDM 6 PSI
MSV-2B-AC-E-.25	1/8 Valve Acetal EPDM .22
MSV-2B-AC-E-1	1/8 Valve Acetal EPDM 1 PSI
MSV-2B-AC-E-5	1/8 Valve Acetal EPDM 5 PSI
MSV-3BAC-.75V-41	3/16 Acetal .75 Viton with 41 micron
MSV-3B-AC-B-1	3/16 Valve Acetal Buna 1
MSV-3B-AC-E-1	3/16 Valve Acetal EPDM 1
MSV-3B-K720-1SS-V	3/16 Kynar 720 Valve Viton 1 PSI 316 SS
MSV-3B-K720-E-.5H	3/16 Kynar 720 Valve EPDM .5 Hastelloy®
MSV-3B-PC-E-.5	3/16 Barb PC EPDM 1/2 PSI
MSV-3B-PC-E-.75	3/16 Barb PC Valve EPDM .75
MSV-3B-PC-E-1	3/16 Barb PC EPDM 1PSI
MSV-3B-Rx2530-6WC-S	3/16 Barb RSPC Valve 6WC Silicone
MSV-4B-PC-S-.22PI	1/4 Valve Polycarb Silicone .22
MSV-4B-PC-S-.5	1/4 Valve Polycarb Silicone .5
MSV-5B-Rx2530-6WC-S	5/16 Barb RSPC Spring Valve 6WC Silicone
MSV-6B-AC-.22 E	3/8 Valve Acetal .22 EPDM
MSV-6B-AC-E-1	3/8 Valve Acetal EPDM 1 PSI
MSV-6B-K720-E-1	3/8 Valve Kynar EPDM 1 PSI
MSV-6B-Rx2530-6WC-S	5/16 Barb RSPC Spring Valve 6WC Silicone



FSPV SERIES - POPPET CHECK VALVES

The FSPV Series Poppet Check Valves come in Black PVDF, Black Polypropylene, and White Polypropylene with a choice of Buna-N, EPDM, Viton® or Kalrez® seal. Standard spring is 302 Stainless Steel with a cracking pressure of 1/3 psi. Optional springs of 1 or 7 psi are available. These high-flow valves can be used in pressures up to 125 psi. Hastelloy spring is optional. The inlet and outlet sizes are Female NPT 1/4 inch, 3/8 inch, 1/2 inch, and 3/4 inch and Male NPT size of 1/2 inch.

SKU	Description
FSPV-12F	1/2 FNPT Poly Poppet Check Valve
FSPV-12F12M	1/2 FNPT by 1/2 MNPT Poly Poppet Check Valve
FSPV-12M12M	1/2 MNPT by 1/2 MNPT Poly Poppet Check Valve
FSPV-12M-HV	1/2 MNPT Valve Hastelloy® FKM Poppet Check Valve
FSPV-14F	1/4 FNPT Poly FKM 302 1 psi Poppet Check Valve
FSPV-14F-.3E-WP	1/4 FNPT White Poly EPDM Seals 1/3 psi Poppet Check Valve
FSPV-14F-HV-1	1/4 FNPT Poly FKM Hastelloy® 1 psi Poppet Check Valve
FSPV-34F	3/4 FNPT Poly FKM Disk 1/3 psi Poppet Check Valve
FSPV-34F-11WC	3/4 FNPT Poly FKM 11" C 1/3 psi Poppet Check Valve
FSPV-34F-5WC	3/4 FNPT Poly FKM 5" WC Poppet Check Valve
FSPV-34F-HV	3/4 FNPT Poly FKM Disk Hastelloy® 1/3 psi Poppet Check Valve
FSPV-34F-HV-.7	3/4 FNPT Poly FKM O-Ring Hastelloy® .7 psi Poppet Check Valve
FSPV-34F-HV-1.5	3/4 FNPT Poly FKM O-Ring Hastelloy® 1.5 psi Poppet Check Valve
FSPV-34F-HV-11WC	3/4 FNPT Poly FKM O-Ring Hastelloy® 11 WC Poppet Check Valve
FSPV-38F	3/8 FNPT Poly FKM 302 1/3 psi Poppet Check Valve
FSPV-38F-E-9	3/8 FNPT Poly FKM 302 1 psi Poppet Check Valve
FSPV-38F-HV-2	3/8 FNPT Poly Hastelloy® FKM #2 O-Ring Poppet Check Valve



CCV SERIES - POPPET CHECK VALVES

The CCV Series are miniature Poppet Check Valves and Pressure Release Valves available with 1/8 inch Male NPT threads and 1/4 inch compression fittings. The NPT fittings are made of Polypropylene, Nylon and ABS with O-Rings made of Buna-N, EPDM, Viton®, Silicone or Fluorosilicone. The spring pressure is 20 psi. The compression fittings are made of Polypropylene with a .713 OD size.

SKU	Description
CCV-2M14C-1	1/8 MNPT by 1/4 Comp Polypropylene / EPDM 1 psi
CCV-2M14C-1.5	1/8 MNPT by 1/4 Comp Polypropylene / EPDM 1.5 psi
CCV-2M14C-3	1/8 MNPT by 1/4 Comp Polypropylene / EPDM 3 psi
CCV-2M14C-3-PPS	1/8 MNPT by 1/4 Comp Polypropylene / Silicone 3 psi
CCV-2M-3	1/8 MNPT by 1/8 MNPT Polypropylene / EPDM 3 psi
CCV-4C6M-3	1/4 Comp by 3/8 MNPT Polypropylene / EPDM 3 psi
CCV-4M14C-1	1/4 MNPT by 1/4 Comp Polypropylene / EPDM 1 psi
CCV-4M-4	1/4 MNPT by 1/4 MNPT Polypropylene / EPDM 4 psi



SELF-SEALING
CHECK VALVES

SELF-SEALING CHECK VALVES

Check Valves: Self-Sealing Check Valves



PSSV SERIES | SELF-CLOSING CHECK VALVES

Our **PSSV Series, Self-sealing Check Valves**, are made from either Polycarbonate or Polypropylene with Barb connector sizes of 3/16 inch or 5/16 inch. Product is made in a class 8 clean-room. The seal is a retractable silicone disk that prevents backflow in a number of air and liquid applications making it an ideal option for the Medical Industry. Open pressure is approximately .20 PSI

SKU	Description
PSSV-3B-PP	3/16 inch by 3/16 inch Polypropylene Barbed Self-Sealing Check Valve
PSSV-3B-PC	3/16 inch by 3/16 inch Polycarbonate Barbed Self-Sealing Check Valve
PSSV-5B-PP	5/16 inch by 5/16 inch Polypropylene Barbed Self-Sealing Check Valve
PSSV-5B-PC	5/16 inch by 5/16 inch Polycarbonate Barbed Self-Sealing Check Valve
PSSV-5B3B-PP	5/16 inch by 3/16 inch Polypropylene Barbed Self-Sealing Check Valve
PSSV-5B3B-PC	5/16 inch by 3/16 inch Polycarbonate Barbed Self-Sealing Check Valve

INDEX

2

20 Series Grey Polypropylene Inline Hose Barb Socket 3

A

ASD Series 18

B

BBCV Series 10

C

CCV Series - Poppet Check Valves 23

CDV NON-BARBED CHECK VALVE (POLYCARBONATE AND ACRYLIC AVAILABLE) 18

CIS Series - Acrylic Diaphragm Poppet Check Valves 10

CMKV Series 9

CNV DUCKBILL CHECK VALVE 17

CRV Series - Cartridge Insert Valves 14

CSP Series - Polyethylene Check Valves 9

CVK Series - Male Check Valves 13

D

DCE Series 13

F

FSPV Series - Poppet Check Valves 22

M

MCV Series - Check Valves 11

MPV Series | Automotive Grade Check Valves 8

MPV Series | Food & Beverage Grade Check Valves 8

MPV Series | Industrial Grade Check Valves 6

MPV Series | Medical Grade Check Valves 6

MPV-L Series | Medical Grade Luer Check Valves 5

MSV Series | Spring-Loaded Check Valves 21

N

NCV NICKLE PLATED BRASS POPPET CHECK VALVE 20

P

PCVM Series 20

PPCV Series 19

PSSV Series | Self-Closing Check Valves 24

Q

QCD Series - Luer Duckbill Check Valves 17

V

VC-IG Series 4