

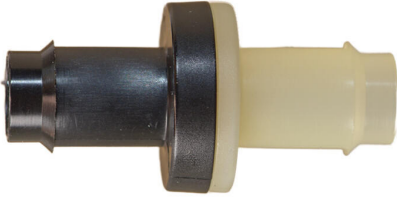


DIAPHRAGM CHECK VALVES

DIAPHRAGM CHECK VALVES

Check Valves: Diaphragm Check Valves
Pneuline 100% Leak Tests all MPV Series Check Valves in-house.

MPV 6B SERIES



The MPV-6B Series is built for systems that require **maximum flow capacity** paired with dependable one-directional control. Featuring a **3/8" barbed** connection and a high-flow internal architecture, this valve supports significantly increased throughput while maintaining tight, reliable sealing. Each unit is subjected to **100% leak-decay testing** in our controlled production environment to ensure long-term performance and consistency.

Durable Body Material Options: choose from a range of high-performance resins engineered for chemical resistance, mechanical strength, and environmental durability:

- **Kynar® (PVDF)**
- **Nylon** (*glass-filled grade available*)
- **Acetal Celcon® M90**
- **Polycarbonate**
- **Polypropylene**

Diaphragm Material Options Select the diaphragm material that best aligns with your application's compatibility and performance needs:

- **EPDM**
- **Viton®**
- **Fluorosilicone**
- **Kalrez®**
- **Silicone USP Class VI**
- **FDA-grade Viton®**

Engineered for Customization

For applications with unique flow, compatibility, or regulatory requirements, we offer **custom molding** and fully configurable resin/diaphragm combinations. Our engineering team works closely with you to develop solutions tailored to your system's exact specifications.

Optimized for High-Demand, High-Flow Applications

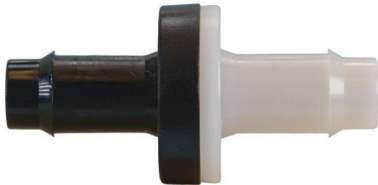
With its enlarged barb size, high-flow design, and purity-focused construction, the MPV-6B Series is ideal for medical devices, laboratory systems, industrial equipment, and high-purity fluid handling environments where elevated flow rates are essential.

[Flow and Crack Pressure Chart- High Flow](#)

Need more information or looking to tailor one of our valves for a specific application?

Complete the form below and our team will promptly connect with you to discuss your requirements and ensure you get the right solution.

[Contact Form](#)



MPV 5B SERIES

The MPV-5B Series is designed for systems that demand **greater flow capacity** and consistent one-directional control. With its **5/16" barbed** connection and optimized high-flow internal geometry, this valve supports increased throughput while maintaining dependable sealing performance. Every unit is subjected to **100% leak-decay testing** within our controlled production environment to ensure reliability from the first cycle to the last.

Versatile Body Material Options: Choose from a range of durable, engineering-grade resins to match your chemical and mechanical requirements:

- **Kynar® (PVDF)**
- **Nylon** (*glass-filled grade available*)
- **Acetal Celcon® M90**
- **Polycarbonate**
- **Polypropylene**

Diaphragm Material Selections Dial in the ideal balance of compatibility, flexibility, and performance with multiple diaphragm choices:

- **EPDM**
- **Viton®**
- **Fluorosilicone**
- **Kalrez®**
- **Silicone USP Class VI**
- **FDA-grade Viton®**

Engineered for Customization

For applications with unique flow, compatibility, or regulatory needs, we offer **custom molding** and fully configurable resin/diaphragm combinations. Our engineering team works closely with you to create solutions tailored to your system's exact requirements.

Optimized for High-Demand Applications

With its high-flow design, robust construction, and purity-focused materials, the MPV-5B Series is an excellent choice for medical devices, laboratory equipment, industrial systems, and high-purity fluid handling environments.

[Flow and Crack Pressure Chart - High Flow](#)

Need more information or looking to tailor one of our valves for a specific application?

Complete the form below and our team will promptly connect with you to discuss your requirements and ensure you get the right solution.

[Contact Form](#)

MPV 4BH SERIES



The MPV-4BH Series is engineered for applications requiring enhanced flow capacity without compromising sealing integrity. Featuring a 1/4" barbed connection and a **high-flow internal design**, this valve delivers superior throughput while maintaining reliable flow control. Every unit undergoes 100% leaked-decay testing in our controlled production environment to ensure consistent performance and long-term durability.

Customizable Body Materials: choose from a wide range of engineering-grade resins to meet your system's chemical, mechanical, and environmental requirements:

- **Kynar® (PVDF)**
- **Nylon (glass-filled grade available)**
- **Acetal Celcon® M90**
- **Polycarbonate**
- **Polypropylene**

Diaphragm Options: Select the diaphragm material that best aligns with your application's chemical compatibility and performance needs:

- **EPDM**
- **Viton®**
- **Fluorosilicone**
- **Kalrez®**
- **Silicone USP Class VI**
- **FDA-grade Viton**

Tailored Engineering

For specialized flow, compatibility, or regulatory requirements, we offer custom molding and fully configurable resin/diaphragm combinations. Our engineering team partners with you to develop precision-matched solutions optimized for your unique application.

Built for Demanding, High-Flow Environments

Designed for purity, performance, and elevated flow capacity, the MPV-4BH Series delivers exceptional reliability for medical devices, laboratory systems, industrial equipment, and high-purity fluid handling applications.

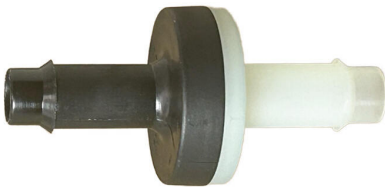
[Flow and Crack Pressure Chart - High Flow](#)

Need more information or looking to tailor one of our valves for a specific application?

Complete the form below and our team will promptly connect with you to discuss your requirements and ensure you get the right solution.

[Contact Form](#)

MPV 4B SERIES



Built for dependable performance, the MPV-4B Series provides reliable flow control in a robust 1/4" barbed configuration. Each valve is precision-engineered and undergoes 100% leak-decay testing in our controlled production environment to ensure consistent sealing, durability, and long-term reliability.

Customizable Body Materials: Select the ideal resin to meet your application's performance, chemical compatibility, and environmental requirements:

- **Kynar® (PVDF)**
- **Nylon (glass-filled grade available)**
- **Acetal Celcon® M90**
- **Polycarbonate**
- **Polypropylene**

Diaphragm Options Optimize flexibility, chemical resistance, and functional performance with a wide range of diaphragm materials:

- **EPDM**
- **Viton®**
- **Fluorosilicone**
- **Kalrez®**
- **Silicone USP Class VI**
- **FDA-grade Viton®**

Tailored Engineering

For specialized or demanding applications, we offer custom molding and fully configurable resin/diaphragm combinations. Our engineering team collaborates with you to develop precision-matched solutions that meet unique performance, regulatory, or environmental requirements.

Built for Critical Environments

Designed for purity, performance, and customization, the **MPV-4B Series** delivers exceptional quality and reliability for medical, laboratory, industrial, and high-purity fluid systems.

[*Flow and Crack Pressure Chart - Standard Flow*](#)

Need more information or looking to tailor one of our valves for a specific application?

Complete the form below and our team will promptly connect with you to discuss your requirements and ensure you get the right solution.

[Contact Form](#)

MPV 3B SERIES



Engineered for dependable performance, the MPV-3B Series provides reliable flow control in a compact **3/16" barbed** configuration. Each valve is precision-manufactured and undergoes **100% leak-decay testing** in our controlled production environment to ensure consistent sealing and long-term durability.

Customizable Body Materials

Select the ideal resin to meet your application's performance and compatibility needs:

- **Kynar® (PVDF)**
- **Nylon** (*glass-filled grade available*)
- **Acetal Celcon® M90**
- **Polycarbonate**
- **Polypropylene**

Diaphragm Options

Optimize chemical resistance, flexibility, and functional performance with a wide range of diaphragm materials:

- **EPDM**
- **Viton®**
- **Fluorosilicone**
- **Kalrez®**
- **Silicone USP Class VI**
- **FDA-grade Viton®**

Tailored Engineering

For unique or demanding applications, we offer **custom molding** and fully configurable resin/diaphragm combinations. Our engineering team collaborates with you to develop precision-matched solutions that meet specific performance, regulatory, or environmental requirements.

Built for Critical Environments

Designed for purity, performance, and customization, the MPV-3B Series delivers exceptional quality and reliability for medical, laboratory,

industrial, and high-purity systems.

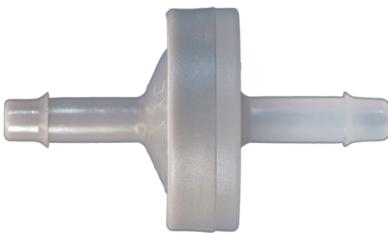
[Flow and Crack Pressure Chart - Standard Flow](#)

Need more information or looking to tailor one of our valves for a specific application?

Complete the form below and our team will promptly connect with you to discuss your requirements and ensure you get the right solution.

[Contact Form](#)

MPV 2B SERIES



Engineered for reliability and performance, the MPV-2B Series delivers consistent flow control in a compact 1/8" barbed design. Each valve is precision-built and undergoes **100% leak-decay testing** in our controlled production environment to ensure dependable sealing and long-term durability.

Customizable Body Materials: Choose the ideal resin for your application requirements:

- **Kynar® (PVDF)**
- **Nylon** (*glass-filled grade available*)
- **Acetal Celcon® M90**
- **Polycarbonate**
- **Polypropylene**

Diaphragm Options Optimize chemical compatibility, flexibility, and performance with a wide range of diaphragm materials:

- **EPDM**
- **Viton®**
- **Fluorosilicone**
- **Kalrez®**
- **Silicone USP Class VI**
- **FDA-grade Viton®**

Tailored Engineering

For specialized applications, we offer **custom molding** and fully customizable resin/diaphragm combinations. Our engineering team partners with you to develop precision-matched solutions that meet unique performance, regulatory, or environmental requirements.

Built for Critical Environments

Designed for purity, performance, and configurability, the MPV-2B Series provides exceptional quality and reliability for demanding

applications across medical, laboratory, industrial, and high-purity systems.

[Flow and Crack Pressure Chart- Standard Flow](#)

Need more information or looking to tailor one of our valves for a specific application? Complete the form below and our team will promptly connect with you to discuss your requirements and ensure you get the right solution.

[Contact Form](#)



MPV-L SERIES | MEDICAL GRADE LUER CHECK VALVES

Engineered for **critical medical and laboratory applications**, our **MPV Luer Series Medical Grade Plastic Check Valves** are **manufactured, assembled, and rigorously tested at 15 PSI in a certified Class 7 Cleanroom environment**, ensuring unmatched contamination control and reliability.

Ultra-Pure, High-Performance Materials Crafted from premium **Polypropylene, Polycarbonate, Radiation-Stable Polycarbonate, and Kynar® 720**, our check valves deliver **exceptional chemical resistance and durability** for demanding medical, pharmaceutical, and laboratory environments.

Precision-Designed for Sterile Applications Pre-packaged and produced under strict cleanroom conditions, these valves provide **consistent performance where purity matters most.**

4 Main Connector Options:

- Male Inlet Luer with Rotating Collar to Female Luer
- Male Inlet Rotating Collar to Male Rotating Collar
- Female Inlet Luer Lock to Female Luer Lock
- Female Inlet Luer Lock to Male Slip

Barb to ***

Diaphragm Options: Silicone

Flow Direction: Inlet to Outlet

****Custom Options: These Luers can be manufactured to fit with any of our Barb Connectors on the opposing end.*

Barb Size options: 1/8 inch, 3/16 inch, 1/4 inch, 5/16 inch, 3/8 inch

SKU	Luers	Body Material	Diaphragm
MPV-FLL-BODY-DIAPHRAGM	IN: Female Luer OUT: Female Luer	Polycarbonate Polypropylene Kynar®	Silicone USP Class VI
MPV-MLLR-BODY-DIAPHRAGM	IN: Male Luer OUT: Male Luer w/Rotating Collar	Polycarbonate Polypropylene Kynar®	Silicone USP Class VI
MPV-FLL-MLLR-BODY-DIAPHRAGM	IN: Female Luer OUT: Male Luer w/ Rotating Collar	Polycarbonate Polypropylene Kynar®	Silicone USP Class VI
MPV-MLLR-FLL-BODY-DIAPHRAGM	IN: Male Luer Out: Female Luer	Polycarbonate Polypropylene Kynar®	Silicone USP Class VI

Cleanroom Class 8 Production & Manufacturing Available

CIS SERIES



This is a non-barbed Check Valve with a white tubing port inlet and clear tubing port outlet. The body is made of Acrylic with a blue Silicone diaphragm. This check valve is pressure-rated at 45 psi. The port sizes are both .130" and will accommodate 1/16" ID soft Silicone tubing as well as other tubing of 1/8" and 3/32" ID. It is manufactured in an ISO Class 8 Cleanroom and is Gamma, E-beam, and EtO sterilizable. This valve is made of Class VI approved materials, it is ultrasonically welded and is 100% inline tested for backflow and weld leaks.

SKU	Description
CIS-6383	Check Valve .130 port Acrylic/Silicone .29CP

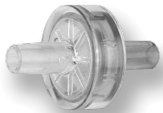
CSP SERIES - POLYETHYLENE CHECK VALVES



The CSP Series Check Valves have a Polyethylene housing with a Neoprene disc for the 1/4-inch size and a Polyethylene disc for the 3/8-inch size. The maximum pressure for these check valves is 20 psi.

SKU	Description
CSP-38	3/8 inch to 9/16 inch ID Polypropylene Check Valve

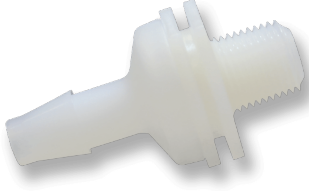
BBCV SERIES



The BBCV Series Check Valve has a Male Slip Luer with 30 psi back pressure and 1/4 psi inlet cracking pressure. This series comes in ABS or Polycarbonate housing, both with Silicone Discs.

SKU	Description
BBCV-MLFL-ABS	Male Luer by Female Luer ABS Check Valve .25 psi Crack
BBCV-MLFL-01-ABS	Male Luer by Female Luer ABS Check Valve .01 psi Crack
BBCV-MLML-ABS	Male Luer by Male Luer ABS Check Valve .25 psi Crack

CMKV SERIES



The CMKV Series Plastic Check Valves are 1/8 inch Male NPT by Barb sizes of 1/8 inch, 3/16 inch, 1/4 inch, and 3/8 inch. The flow is from thread to barb. Material / Disc combinations are available in PVDF with FKM, Polypropylene with FKM, Polycarbonate with Neoprene, Polycarbonate with Silicone, Nylon with Silicone, and Nylon with Neoprene.

SKU	Description
CMKV-18B	1/8 MNPT by 1/8 Barb PVDF/FKM Check Valve
CMKV-14B-NS	1/8 MNPT by 1/4 Barb Nylon/Silicone Check Valve
CMKV-316B	1/8 MNPT by 3/16 Barb PVDF/FKM Check Valve

VC-IG SERIES



The VC-IG Series Plastic Check Valves have housing molded of Polysulfone or Polypropylene with either a POM or Silicone disc. The cracking pressure for these units is .8 H₂O or .028 psi. The 10-32 inch units have a cracking pressure of 10 H₂O or .36 psi. These check valves were made to be used in low-pressure applications. Reverse flow at 1 psi is available as follows: Polypropylene with Silicone: .20 SCIM, Polysulfone with POM 2.98 SCIM, Polysulfone with POM 1.00 SCIM R2, Polysulfone with Silicone .20 SCIM, and Polysulfone with Silicone .06 SCIM 10-32 inch Female ports only. Maximum pressure is 10 psi excluding the 10-32 inch port which is rated for 75 psi.

SKU	Description
VC-IG-1032F-PSS	1032 Female PS Silicon Check Valve
VC-IG-1B-PPS	1/16 Barb PP Silicone Check Valve
VC-IG-1B-PSC R2	1/16 Barb PS Celcon® Check Valve
VC-IG-1B-PSS	1/16 Barb PS Silicone Check Valve
VC-IG-1S-PPS	1/16 Shaft PP Silicone Check Valve
VC-IG-1S-PSC	1/16 Shaft PS Celcon® Check Valve
VC-IG-1S-PSC R2	1/16 Shaft PS Celcon® Check Valve
VC-IG-1S-PSS	1/16 Shaft PS Silicone Check Valve
VC-IG-2B-PPS	1/8 Barb PP Silicone Check Valve
VC-IG-2B-PSC R2	1/8 Barb PS Celcon® Check Valve

Diaphragm Check Valves



SKU	Description
VC-IG-2B-PSS	1/8 Barb PS Silicone Check Valve