



## **BULKHEADS**

Our BHUDC Series Bulkheads are Manufactured in house by Pneuline Supply, Inc. and offer a unique flattened side to fit a Greenlee D punch: excepted 3/8 barb, thus avoiding the possibility for the Bulkhead to turn. Bulkheads are assigned sizes from the outside of the panel to the inside. Available in 1/8 inch, 1/4 inch, and 3/8 and 1/2 inch sizes, or any combination: exception 1/2 is standard In and out. Materials available are Natural Nylon, Polypropylene, PVDF, and Acetal. All products are gamma sterilizable. Zinc-plated nuts are available for Nylon bulkheads, and Nylon nuts are available for all other bulkheads.



## **PLASTIC BULKHEADS**

Pneuline Supply, Inc. offers a wide selection of Plastic Bulkheads including products with panel mount and tank mount capabilities. Bulkheads produced in house by Pneuline Supply are available in Natural Nylon, Natural Polypropylene, Polyethylene and PVDF. Other Bulkheads are available in Black Nylon, or Black and Gray Polypropylene. We offer Elbows, Tees and Crosses as well as Straight Bulkheads.



## PMF SERIES

This one-sided Bulkhead is tank mountable with a flange. It is available in Nylon, Black Nylon, Polypropylene, HDPE and PVDF. UNF thread sizes are: 5/16-24, 10-32 and 1/4-28. The NPS sizes are 1/8" and 1/4". Barb sizes are: 1/16", 1/8", 5/32", 3/16" and 1/4". (order as NN, BN, PP, HDPE, PVDF) O-Rings available.

SKU	DESCRIPTION
PMF1428-2B	1/4-28 1/8 Barb Bulkhead Tank Flange
PMF2M-1	1/8 NPS-1/16 Bulkhead Tank Flange
PMF2M-2	1/8 NPS-1/8 Bulkhead Tank Flange
PMF2M-332	1/8 NPS-3/32 Bulkhead Tank Flange
PMF2M-3	1/8 NPS-3/16 Bulkhead Tank Flange
PMF2M-4	1/8 NPS-1/4 Bulkhead Tank Flange
PMF4M-1	1/4 NPS-1/16 Bulkhead Tank Flange
PMF4M-2	1/4 NPS-1/8 Bulkhead Tank Flange
PMF4M-332	1/4 NPS-3/32 Bulkhead Tank Flange
PMF4M-3	1/4 NPS-3/16 Bulkhead Tank Flange
PMF4M-4	1/4 NPS-1/4 Bulkhead Tank Flange
PMF4M-532	1/4 NPS-5/32 Bulkhead Tank Flange
PMF4M-5	1/4 NPS-5/16 Bulkhead Tank Flange
PMF4M-6	1/4 NPS-3/8 Bulkhead Tank Flange
PMF4M-8	1/4 NPS-1/2 Bulkhead Tank Flange
PMF516-1	5/16-24 by 1/16 Bulkhead Tank Flange
PMF516-2	5/16-24 by 1/8 Barb Bulkhead Tank Flange
PMF516-332	5/16-24 by 3/32 Bulkhead Tank Flange
PMF516-3	5/16-24 by 3/16 Bulkhead Tank Flange
PMF516-4	5/16-24 by 1/4 Bulkhead Tank Flange
PMF516-532	5/16-24 by 5/32 Bulkhead Tank Flange



## PC-S PANEL MOUNT REDUCTION BULKHEAD

Panel mount reduction Bulkhead is made of Animal Free Natural Polypropylene and White Nylon. The barb sizes are 1/16", 3/32" and 1/8". The panel mount connector sizes are: 10-32" and 1/4-28". A Nylon nut is standard but a Stainless Steel nut is optional.

SKU	DESCRIPTION
PC-S10-1B332B-NPP	10-32 with 1/16 by 3/32 Natural Polypropylene Bulkhead
PC-S10-1B332B-WN	10-32 with 1/16 by 3/32 White Nylon Bulkhead
PC-S10-1B-NPP	10-32 with 1/16 Barb Natural Polypropylene Bulkhead
PC-S10-1B-WN	10-32 with 1/16 Barb White Nylon Bulkhead
PC-S10-332B-NPP	10-32 with 3/32 Barb Natural Polypropylene Bulkhead
PC-S10-332B-WN	10-32 with 3/32 by 3/32 White Nylon Bulkhead
PC-S14-1B2B-NPP	1/4-28 with 1/16 by 1/8 Natural Polypropylene Bulkhead
PC-S14-1B2B-WN	1/4-28 with 1/16 by 1/8 White Nylon Bulkhead
PC-S14-2B-NPP	1/4-28 with 1/8 Barb Natural Polypropylene Bulkhead
PC-S14-2B-WN	1/4-28 with 1/8 by 1/8 White Nylon Bulkhead
PC-S14-332B2B-NPP	1/4-28 with 1/16 by 1/8 Natural Polypropylene Bulkhead
PC-S14-332B2B-WN	1/4-28 with 1/16 by 1/8 White Nylon Bulkhead

## PC-IG REDUCING AND EQUAL BARBED BULKHEADS



Reducing and equal bulkheads are made of Black and White Nylon and Gray Polypropylene. Barb sizes are 1/16", 1/8" and .170" ID tubing. The external threads for panel mounting are 1/4-28" and a nut is supplied. The maximum supply pressure is 125 psi and the working temperature ranges are: -50° F to 180° F for Nylon and -40° F to 200° F for Polypropylene.

SKU	DESCRIPTION
PC-IG-170B-BN	.170 Barb Black Nylon Bulkhead
PC-IG-170B-GYP	.170 Barb Gray Polypropylene Bulkhead
PC-IG-170B-WN	.170 Barb White Nylon Bulkhead
PC-IG-170BX1B-BN	.170 BY .062 Barb Black Nylon Bulkhead
PC-IG-170BX1B-GYP	.170 BY .062 Barb Gray Polypropylene Bulkhead
PC-IG-170X1B-WN	.170 BY .062 Barb White Nylon Bulkhead
PC-IG-1B-BN	.062 Barb Black Nylon Bulkhead

SKU	DESCRIPTION
PC-IG-1B-GYP	.062 Barb Gray Polypropylene Bulkhead
PC-IG-1B-WN	.062 Barb White Nylon Bulkhead
PC-IG-2B-BN	.125 Barb Black Nylon Bulkhead
PC-IG-2B-GYP	.125 Barb Gray Polypropylene Bulkhead
PC-IG-2B-WN	.125 Barb White Nylon Bulkhead
PC-IG-2BX1B-BN	.125 BY .062 Barb Black Nylon Bulkhead
PC-IG-2BX1B-GYP	.125 BY .062 Barb Gray Polypropylene Bulkhead



MBR SERIES

The MBR Panel Mounting Bulkhead Series Nylon, Polypropylene, or PVDF in 10-32 or ¼-28 UNF Threads. All Bulkheads are listed showing the outside panel first with the second being on the inside of the panel.

SKU	Description
MBR10-1B332B	10-32 1/16 Barb by 3/32 Barb Bulkhead
MBR10-1B	10-32 1/16 Barb by 1/16 Barb Bulkhead
MBR10-332B	10-32 3/32 Barb by 3/32 Barb Bulkhead
MBR14-1B2B	1/4-28 1/16 Barb by 1/8 Barb Bulkhead
MBR14-2B	1/4-28 1/8 Barb by 1/8 Barb Bulkhead
MBR14-332B2B	1/4-28 3/32 Barb by 1/8 Barb Bulkhead

## MBF PANEL MOUNT BULKHEAD WITH FLANGE



These are bulkheads with panel mountings of 5/16-24 UNF threads, 1/8" and 1/4" NPS threads and a mounting flange. The first barb size is outside the panel, the second on the inside. Available in Black Nylon, Natural Nylon, Polypropylene and PVDF. Barb sizes are 1/16", 3/32", 1/8", 5/32", 3/16" and 1/4". (order as BN, NN, PP, PVDF)

SKU	Description
MBF2-1B3B	1/8 NPS-1/16 by 3/16 Bulkhead
MBF2-1B4B	1/8 NPS-1/16 by 1/4 Bulkhead
MBF2-2B3B	1/8 NPS-1/8 by 3/16 Bulkhead
MBF2-2B4B	1/8 NPS-1/8 by 1/4 Bulkhead
MBF2-3323B	1/8 NPS-3/32 by 3/16 Bulkhead
MBF2-3B	1/8 NPS-3/16 by 3/16 Bulkhead
MBF2-3B4B	1/8 NPS-3/16 by 1/4 Bulkhead
MBF2-4B	1/8 NPS-1/4 by 1/4 Bulkhead
MBF2-532B3B	1/8 NPS-5/32 by 3/16 Bulkhead
MBF2-532B4B	1/8 NPS-5/32 by 1/4 Bulkhead
MBF4-1B3B	1/4 NPS-1/16 by 3/16 Bulkhead
MBF4-1B4B	1/4 NPS-1/16 by 1/4 Bulkhead
MBF4-2B3B	1/4 NPS-1/8 by 3/16 Bulkhead
MBF4-2B4B	1/4 NPS-1/8 by 1/4 Bulkhead
MBF4-332B3B	1/4 NPS-3/32 by 3/16 Bulkhead
MBF4-332B4B	1/4 NPS-3/32 by 1/4 Bulkhead
MBF4-3B4B	1/4 NPS-3/16 by 1/4 Bulkhead
MBF4-3B	1/4 NPS-3/16 by 3/16 Bulkhead
MBF4-4B4B	1/4 NPS-1/4 by 1/4 Bulkhead
MBF4-4B516B	1/4 NPS-1/4 by 5/16 Bulkhead
MBF4-4B6B	1/4 NPS-1/4 by 3/8 Bulkhead
MBF4-516B6B	1/4 NPS-5/16 by 3/8 Bulkhead
MBF4-532B3B	1/4 NPS-5/32 by 3/16 Bulkhead
MBF4-532B4B	1/4 NPS-5/32 by 1/4 Bulkhead
MBF4-5B5B	1/4 NPS-5/16 by 5/16 Bulkhead
MBF4-6B6B	1/4 NPS-3/8 by 3/8 Bulkhead
MBF516-1B332B	5/16-24 UNF 1/16 by 3/32 Bulkhead
MBF516-1B3B	5/16-24 UNF 1/16 by 3/16 Bulkhead
MBF516-2B3B	5/16-24 UNF 1/8 by 3/16 Bulkhead
MBF516-2B532B	5/16-24 UNF 1/8 by 3/32 Bulkhead
MBF516-332B3B	5/16-24 UNF 3/32 by 3/16 Bulkhead

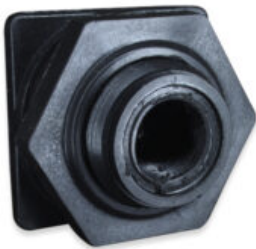
SKU	Description
MBF516-332B532B	5/16-24 UNF 3/32 by 5/32 Bulkhead
MBF516-3B	5/16-24 UNF 3/16 by 3/16 Bulkhead
MBF516-532	5/16-24 UNF 5/32 by 5/32 Bulkhead

BHUDC SERIES | BULKHEADS



The BHUDC Series Bulkheads are Manufactured by *Pneuline Supply, Inc.* in-house and offer a unique flatted side for a Greenlee D punch, thus avoiding the possibility for the Bulkhead to turn. Bulkheads are assigned sizes from the outside of the panel to the inside. Available in 1/8 inch, 1/4 inch, and 3/8 inch Hose Barb sizes, or any combination. The 3/8 inch panel fitting does not have a flatted side. Materials available are Natural Nylon, Black Nylon, Polypropylene, PVDF, and Acetal. Zinc-plated nuts are available for Nylon bulkheads, and Nylon nuts are available for all other bulkheads.

SKU	Description
BHUDC-2B2B-BN	1/8 inch Barb by 1/8 inch Barb Black Nylon Bulkhead
BHUDC-2B2B-N	1/8 inch Barb by 1/8 inch Barb Nylon Bulkhead
BHUDC-2B4B-BN	1/8 inch Barb by 1/4 inch Barb Black Nylon Bulkhead
BHUDC-2B4B-N	1/8 inch Barb by 1/4 inch Barb Nylon Bulkhead
BHUDC-2B4B-NK	1/8 inch Barb by 1/4 inch Barb PVDF Bulkhead
BHUDC-4B170-PP	1/4 inch Barb by .170 Barb Nylon Bulkhead
BHUDC-4B4B-BK-PP	1/4 inch by 1/4 inch Black Polypropylene Bulkhead
BHUDC-4B4B-BN	1/4 inch by 1/4 inch Black Nylon Bulkhead
BHUDC-4B4B-BNK-N	1/4 inch ID by 1/4 inch ID Black Nylon Bulkhead
BHUDC-4B4B-N	1/4 inch Barb by 1/4 inch Barb Nylon Bulkhead
BHUDC-4B4B-NK	1/4 inch Barb by 1/4 inch Barb PVDF Bulkhead
BHUDC-4B4B-PP	1/4 inch Barb Natural Polypropylene Bulkhead
BHUDC-4B6B-BN	1/4 inch Barb by 3/8 inch Barb Black Nylon Bulkhead
BHUDC-4B6B-N	1/4 inch Barb by 3/8 inch Barb Nylon Bulkhead
BHUDC-4B6B-PP	1/4 inch Barb by 3/8 inch Barb Polypropylene Bulkhead
BHUDC-6B170B	3/8 inch Barb by .170 Barb Bulkhead
BHUDC-6B170B-N	3/8 inch Barb by .170 Barb Nylon Bulkhead
BHUDC-6B6B-AC	3/8 inch Barb by 3/8 inch Barb Acetal Bulkhead
BHUDC-6B6B-BN	3/8 inch Barb by 3/8 inch Barb Black Nylon Bulkhead
BHUDC-6B6B-N	3/8 inch Barb Nylon Bulkhead
BHUDC-6B6B-PP	3/8 inch Barb by 3/8 inch Barb Polypropylene Bulkhead



**BHF BLACK POLYPROPYLENE BULKHEAD**

The BHF Series Bulkheads are made of Black Polypropylene ranging from ½ inch to 4 inch Female NPT sizes with 3/16 inch Santoprene Seals. For EPDM or Polyethylene seal options see the PBHI series.

SKU	Description
BHF-12	1/2 inch Female Polypropylene Bulkhead
BHF-16	1 inch Female Polypropylene Bulkhead
BHF-34	3/4 inch Female Polypropylene Bulkhead



## **INDEX**

### **B**

BHF BLACK POLYPROPYLENE BULKHEAD 8  
BHUTC Series | Bulkheads 7

### **M**

MBF PANEL MOUNT BULKHEAD WITH FLANGE 6  
MBR Series 5

### **P**

PC-IG REDUCING AND EQUAL BARBED BULKHEADS 4  
PC-S PANEL MOUNT REDUCTION BULKHEAD 4  
PMF Series 3