



# BULKHEADS

## BULKHEADS

Our BHUDC Series Bulkheads are Manufactured in house by Pneuline Supply, Inc. and offer a unique flatted side to fit a Greenlee D punch: excepted 3/8 barb, thus avoiding the possibility for the Bulkhead to turn. Bulkheads are assigned sizes from the outside of the panel to the inside. Available in 1/8 inch, 1/4 inch, and 3/8 and 1/2 inch sizes, or any combination: exception 1/2 is standard In and out. Materials available are Natural Nylon, Polypropylene, PVDF, and Acetal. All products are gamma sterilizable. Zinc-plated nuts are available for Nylon bulkheads, and Nylon nuts are available for all other bulkheads.



# METAL BULKHEADS

## **METAL BULKHEADS**

Discover the perfect metal bulkhead for your needs at Pneuline Supply! Get your personalized quote today!



MSSB SERIES

MSSB Series bulkhead range from 10-32 to 1/2 FNPT product selection is 303 Stainless Steel, 316 Stainless Steel, Aluminum, or Nickel Plated Brass. Can be used as a bushing as the external threads are UNF bolt threads. lock-nut and star-washer are included.

SKU	DESCRIPTION
MSSB-1032-303	10-32 UNF 303 Stainless Steel Bulkhead
MSSB-2F-303	1/8-27 FNPT 303 Stainless Steel Bulkhead
MSSB-4F-303	1/4-18 FNPT 303 Stainless Steel Bulkhead
MSSB-6F-303	3/8-24 FNPT 303 Stainless Steel Bulkhead
MSSB-8F-303	1/2-14 FNPT 303 Stainless Steel Bulkhead
MSSB-2F-316	1/8-27 FNPT 316 Stainless Steel Bulkhead
MSSB-4F-316	1/4-18 FNPT 316 Stainless Steel Bulkhead
MSSB-6F-316	3/8-24 FNPT 316 Stainless Steel Bulkhead
MSSB-8F-316	1/2-14 FNPT 316 Stainless Steel Bulkhead

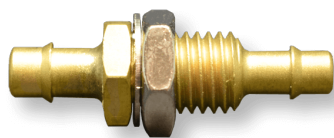


BBM SERIES

The BBM Series multi-barbed Brass Bulkheads were a special order made for Pneuline Supply Inc. These bulkheads have 7/16-24 UNS threads for mounting. The multi-barb sizes are 1/4 inch by 1/4 inch, 1/4 inch by 3/8 inch, and 3/8 inch by 3/8 inch.

SKU	Description
BBM-4B	1/4 inch 7/16-24 Multi-Barbed Brass Bulkhead
BBM-4B6B	1/4 inch 7/16-24 3/8 inch Multi-Barbed Brass Bulkhead
BBM-6B	3/8 inch 7/16-24 Multi-Barbed Brass Bulkhead

## BB SERIES



Brass Bulkheads with Bite-Style Barbs. 10-32 mounting Threads for 1/16 inch, .078, and 3/32 inch. 1/4-28 mounting Thread with 1/16 inch thru hole to 5/32 inch Barb. 5/16-24 mounting Thread with 1/16 inch thru hole to 3/16 inch Barb. 3/8-24 mounting Thread with 1/16 inch thru-hole to 3/8 inch Barb. Mixed sizes are available for Straight and Elbow models.

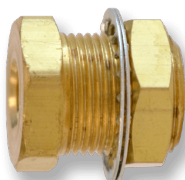
SKU	Description
BB-10-170B078B	10-32 by .170 by .078 Barb Brass Reducing Bulkhead
BB-10-170B332B	10-32 by .170 by 3/32 Barb Brass Reducing Bulkhead
BB-10-1B	10-32 by 1/16 Barb Brass Bulkhead
BB-10-2B1B	10-32 by 1/8 by 1/16 Barb Brass Reducing Bulkhead
BB-10-332B	10-32 by 3/32 Barb Brass Bulkhead
BB-10-332B1B	10-32 by 3/32 by 1/16 Barb Brass Reducing Bulkhead
BB-10-332B1B-NP	10-32 by 3/32 by 1/16 Barb Nickel Plated Bulkhead
BB-14-2B	1/4-28 by 1/8 Barb Brass Bulkhead
BB-14-6B1B	1/4-28 by 3/8 by 1/16 Barb Brass Reducing Bulkhead
BB-14-O-2B	1/4-28 by 1/8 Barb Brass Reducing Bulkhead O-ring
BB-1M-5B332B	1/16 NPT 5/16 by 3/32 Barb Brass Reducing Bulkhead
BB-2M-5B332B	1/8 NPT 5/16 by 3/32 Barb Brass Reducing Bulkhead
BB-2M-6B4B	1/8 NPT 3/8 by 1/4 Barb Brass Reducing Bulkhead
BB-38-3B-SS	3/8-24 3/16 Barb 303 Stainless Bulkhead
BB-38-4B	3/8-24 1/4 Barb Brass Bulkhead
BB-38-4B-170B	3/8-24 by 1/4 by .170 Barb Brass Reducing Bulkhead
BB-38-4B-170B-SS	3/8-24 by 1/4 by .170 Barb Stainless Steel Bulkhead
BB-38-4B-3B	3/8-24 by 1/4 by 3/16 Barb Brass Reducing Bulkhead
BB-38-4B-NP	3/8-24 by 1/4 Barb Brass Nickel Plated Bulkhead
BB-38-4B-SS	3/8-24 by 1/4 Barb 303 Stainless Bulkhead
BB-38-6B1B	3/8-24 by 3/8 by 1/16 Barb Brass Reducing Bulkhead
BB-38-6B2DB	3/8-24 by 3/8 by 1/8 Double Barb Brass Reducing Bulkhead
BB-38-6B2DB-020	3/8-24 by 3/8 by 1/8 Double Barb, .020 Orifice Brass Reducing Bulkhead
BB-38-6B4B	3/8-24 by 3/8 by 1/4 Barb Brass Reducing Bulkhead
BB-516-170532	5/16-24 by .170 by 5/32 Barb Brass Reducing Bulkhead
BB-516-170732	5/16-24 by .170 by .732 Barb Brass Reducing Bulkhead
BB-516-170B	5/16-24 by .170 Barb Bulkhead



LSSB SERIES

The LSSB Series are 316 Stainless Steel Bulkheads, available in sizes ranging from 1/8 inch, 1/4 inch, 3/8 inch, and 1/2 inch FNPT. The maximum working pressure for these bulkheads is 150 psi and the working temperature range is -4°F to 356°F. For larger sizes with gasket options please see our **BLSS series**.

SKU	Description
LSSB-2	1/8 inch FNPT 316 Stainless Steel Bulkhead
LSSB-4	1/4 inch FNPT 316 Stainless Steel Bulkhead
LSSB-6	3/8 inch FNPT 316 Stainless Steel Bulkhead
LSSB-8	1/2 inch FNPT 316 Stainless Steel Bulkhead

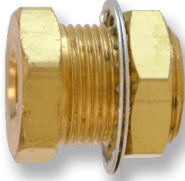


FCBH SERIES

The FCBH Series Brass of Nickel-Plated Brass Bulkheads come standard with two Steel lock washers in sizes ranging from 10-32 to 1/4 inch Female NPT. The 10-32 is 1/2 inch long, all other sizes are 1 inch in length.

SKU	Description
FCBH-1032	10-32 Female UNF by 15/32-32 Brass Bulkhead Fitting
FCBH-14	1/4 FNPT by 3/4-20 Brass Bulkhead Fitting
FCBH-18	1/8 FNPT by 3/4-20 Brass Bulkhead Fitting

## FBH BRASS SERIES



FBH Series inline Brass Bulkheads. FNPT both sides with exceptions, Elbow and several MNPT By FNPT. Brass Bulkhead sizes ranging from 1/8 inch FNPT thru 1 inch FNPT, Male to FNPT products are all 1/2 MNPT Dry seal located on the outside of the panel and FNPT on the inside of the panel, 1/4 or 3/8 FNPT. Zinc-Plated Steel optional,

For Stainless Steel (303 and 316), Nickel-Plated Brass, and Aluminum see MSSB Series. Additional 316 Stainless steel see our LSSB series.

SKU	Description
FBH-12F	1/2 inch Female 1-1/8, 14 UNS Bulkhead
FBH-12F12M	1/2 inch Female by 1/2 inch Male Bulkhead
FBH-12M	1/2 inch Male by 1/2 inch Male Bulkhead
FBH-12M14F	1/2 inch Male 1/4 inch Female Bulkhead
FBH-12M38F	1/2 inch Male 3/8 inch Female Bulkhead
FBH-14F	1/4 inch Female 3/4-16 UNF Bulkhead
FBH-14X	1/4 inch Female 3/4-16 UNF 1 1/2 inch length Bulkhead
FBH-18F	1/8 Female 5/8-18 UNF Bulkhead
FBH-38F	3/8 inch Female 1/14 UNF Bulkhead
FBH-38F12M	3/8 inch Female by 1/2 inch Male Bulkhead
FBH-38F-E	3/8 inch Female by 3/8 inch Female Elbow Bulkhead

## EBHF SERIES



The EBHF Series is a tank flange 90° elbow Bulkhead. This series is available in Aluminum, Brass, and Stainless Steel. Female NPT thread sizes for this series are 1/4 inch, 3/8 inch, and 1/2 inch. Barb sizes for this series are 5/16 inch and 3/8 inch.

SKU	Description
EBHF-4F5B	1/4 inch Female NPT by 5/16 inch Barbed Bulkhead
EBHF-4FE5B	1/4 inch Female NPT by 5/16 inch Barbed 90° Elbow Bulkhead
EBHF-6FE6B	3/8 inch Female NPT by 3/8 inch Barbed 90° Elbow Brass Bulkhead
EBHF-6FE6B-SS	3/8 inch Female NPT by 3/8 inch Barbed 90° Elbow Stainless Steel Bulkhead



SKU	Description
EBHF-8FE6B	1/2 inch Female NPT by 3/8 inch Barbed 90° Elbow Bulkhead



DBH SERIES

The DBH Series Bulkhead is made of brass with bite-style barb connectors. The barb sizes are 1/4 inch and 3/8 inch. This tube fitting is low-pressure and for use with air and water. The maximum pressure is 100 psi at 72°F.

SKU	Description
DBH-170	.170 Bulkhead
DBH-250	.250 Bulkhead

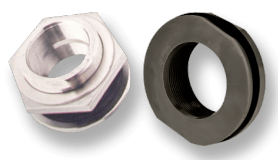


CTBH SERIES

The CTBH is a 303 Stainless Steel Bulkhead Series of female-to-female and Female to Male in sizes ranging from 10-32 to 1/4 inch.

SKU	Description
CTBH-10F18F	10-32 Female by 1/8 FNPT 303 Stainless Steel Bulkhead
CTBH-18M14F	1/8 MNPT by 1/4 FNPT 303 Stainless Steel Bulkhead
CTBH-10F10F	10-32 Female by 10/32 Female 303 Stainless Steel Bulkhead
CTBH-14M14F	1/4 MNPT by 1/4 FNPT 303 Stainless Steel Bulkhead

**BLSS SERIES**



The BLSS Series is a Stainless Steel Bulkhead in sizes ranging from 3/4 inch to 3 inches with either an EPDM or FKM gasket.

SKU	Description
BLSS-12	3/4 FNPT 316 Stainless Steel Bulkhead
BLSS-24	1-1/2 inch FNPT 316 Stainless Steel Bulkhead with EPDM Gasket
BLSS-32	2 inch FNPT 316 Stainless Steel Bulkhead with EPDM Gasket
BLSS-40	1-1/2 inch FNPT 316 Stainless Steel Bulkhead
BLSS-48	3 inch FNPT 316 Stainless Steel Bulkhead with EPDM Gasket



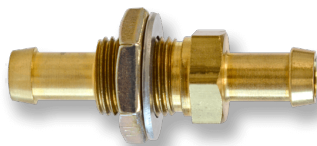
**BBE SERIES**

Brass Bulkheads with Bite-Style Barbs. 10-32 inch UNF mounting Threads for 1/16 inch, .078 inch, and 3/32 inch. 1/4-28 inch mounting Thread with 1/16 inch thru hole to 5/32 inch Barb. 5/16-24 inch mounting Thread with a 1/16 inch thru hole to 3/16 inch Barb. 3/8-24 inch mounting Thread with a 1/16 inch thru hole to 3/8 inch Barb. Mixed sizes are available for Straight and Elbow models.

SKU	Description
BBE10-1B	10-32 by 1/16 Barbed Elbow Bulkhead
BBE10-332B	10-32 by 3/32 Barbed Elbow Bulkhead
BBE10-78B	10-32 by .078 Barbed Elbow Bulkhead
BBE14-170B	1/4-28 by .170 Barbed Elbow Bulkhead
BBE14-2B	1/4-28 by 1/8 Barbed Elbow Bulkhead
BBE14-532B	1/4-28 by 5/32 Barbed Elbow Bulkhead
BBE38-4B	3/8-24 by 1/4 Barbed Elbow Bulkhead
BBE516-170B	5/16-24 by .170 Barbed Elbow Bulkhead
BBE516-2B	5/16-24 by 1/8 Barbed Elbow Bulkhead
BBE516-532B	5/16-24 by 5/32 Barbed Elbow Bulkhead



**EBH SERIES**



The EBH Series Single-Barbed Bulkheads are of either Brass or Aluminum in 1/4 inch, 5/16 inch, 3/8 inch, 5/16 to 3/8 inch, or a 1/4 FNPT by 5/16 inch Barb. A nut, washer, and cap come standard with the Barb to Barb versions (as shown).

SKU		Description
EBH-4B	1/4 inch Brass Barbed Bulkhead	
EBH-4F5B	1/4 inch Female NPT by 5/16 inch Brass Barbed Bulkhead	
EBH-5B	5/16 inch Barbed Brass Bulkhead	
EBH-5B6B	5/16 inch by 3/8 inch Barbed Brass Bulkhead	
EBH-6B	3/8 inch Barbed Bulkhead Brass Bulkhead	



# PLASTIC BULKHEAD ELBOWS

## **PLASTIC BULKHEAD ELBOWS**

Pneuline has plastic elbow fittings available in different barb sizes and different materials, also a variety of thread sizes.



**PMFL SERIES**

PMFL Series is a one-sided Bulkhead Elbow that is tank-mountable with a flange. It is available in Nylon, Black Nylon, Polypropylene, HDPE, and PVDF. UNF thread size is 5/16-24. The NPS sizes are 1/8" and 1/4". Barb sizes are: 1/16", 3/32", 1/8", 5/32", 3/16", 1/4". (order as NN, BN, PP, HDPE, PVDF)

SKU	DESCRIPTION
PMFL2M-1	1/8 NPS-L 1/16 Tank Flange Elbow
PMFL2M-2	1/8 NPS-L 1/8 Tank Flange Elbow
PMFL2M-332	1/8 NPS-L 3/32 Tank Flange Elbow
PMFL2M-3	1/8 NPS-L 3/16 Tank Flange Elbow
PMFL2M-4	1/8 NPS-L 1/4 Tank Flange Elbow
PMFL4M-1	1/4 NPS-L 1/16 Tank Flange Elbow
PMFL4M-2	1/4 NPS-L 1/8 Tank Flange Elbow
PMFL4M-332	1/4 NPS-L 3/32 Tank Flange Elbow
PMFL4M-3	1/4 NPS-L 3/16 Tank Flange Elbow
PMFL4M-4	1/4 NPS-L 1/4 Tank Flange Elbow
PMFL4M-532	1/4 NPS-L 5/32 Tank Flange Elbow
PMFL516-1	5/16-24L 1/16 Tank Flange Elbow
PMFL516-2	5/16-24L 1/8 Tank Flange Elbow



**MBFL SERIES**

Equal and reducing Bulkhead Elbows with a flange and NPS threads. First Barb's size is on the outside of the panel the second is inside the panel. Available in Black Nylon, Natural Nylon, Polypropylene, and PVDF. Thread sizes for the bulkheads are UNF 10-32, 1/4-28 and 5/16-24. NPS thread sizes are 1/8" and 1/4". Barb sizes are 3/32", 1/8", 5/32", 3/16" and 1/4". (order as NN, PP, PVDF) Extra long version is shown.

SKU	Description
MBFL-1032-332B	10-32 3/32 by 3/32 Bulkhead Elbow
MBFL-1032-1B32B	10-32 1/16 by 1/8 Bulkhead Elbow Reducer

SKU	Description
MBFL-1428-2B	1/4-28 1/8 by 1/8 Bulkhead Elbow
MBFL-1428-1B2B	1/4-28 1/16 by 1/8 Bulkhead Elbow Reducer
MBFL-1428-332B2B	1/4-28 3/32 by 1/8 Bulkhead Elbow Reducer
MBFL-516-332B532B	5/16-24 UNF 3/32 by 5/32 Bulkhead Elbow Reducer
MBFL-516-532	5/16-24 5/32 by 5/32 Bulkhead Elbow
MBFL-516-2B552B	1/8 NPS 3/16 by 1/4 Bulkhead Elbow Reducer
MBFL-2M-4B	1/8 NPS 1/4 by 1/4 Bulkhead Elbow
MBFL-2M-332B4B	1/8 NPS 3/32 by 1/4 Bulkhead Elbow Reducer
MBFL-2M-2B4B	1/8 NPS 1/8 by 1/4 Bulkhead Elbow Reducer
MBFL-2M-532B4B	1/8 NPS 5/32 by 1/4 Bulkhead Elbow Reducer
MBFL-2M-3B4B	1/8 NPS 3/16 by 1/4 Bulkhead Elbow Reducer
MBFL-2M-532B4B	1/8 NPS 5/32 by 1/4 Bulkhead Elbow Reducer
MBFL-4M-4B	1/4 NPS 1/4 by 1/4 Bulkhead Elbow
MBFL-4M-2B4B	1/4 NPS 1/8 by 1/4 Bulkhead Elbow Reducer
MBFL-4M-332B4B	1/4 NPS 3/32 by 1/4 Bulkhead Elbow Reducer
MBFL-4M-532B4B	1/4 NPS 5/32 by 1/4 Bulkhead Elbow Reducer



# PLASTIC BULKHEADS

## PLASTIC BULKHEADS

Pneuline Supply, Inc. offers a wide selection of Plastic Bulkheads including products with panel mount and tank mount capabilities. Bulkheads produced in house by Pneuline Supply are available in Natural Nylon, Natural Polypropylene, Polyethylene and PVDF. Other Bulkheads are available in Black Nylon, or Black and Gray Polypropylene. We offer Elbows, Tees and Crosses as well as Straight Bulkheads.



**BHUC SERIES**

BHUC is a 1/2 Barbed bulkhead with an 11/16-24 Thread for the panel mount. 18 MM hole for the mounting through hole. Molded in several materials: Acetal, PVDF, and Polypropylene. Rated at 50 PSI. This bulkhead comes with a nickel-plated nut or with an Acetal nut.

SKU	Description	Materials
BHUC-8B	1/2 inch Barb Bulkhead	Nylon Acetal Polypropylene Kynar®



**PMF SERIES**

PMF Series is a one-sided Bulkhead that is tank-mountable with a flange. It is available in Nylon, Black Nylon, Polypropylene, HDPE, and PVDF. UNF thread sizes are 5/16-24, 10-32 and 1/4-28. In addition, the NPS sizes are 1/8" and 1/4". Barb sizes are 1/16", 1/8", 5/32", 3/16", and 1/4". (order as NN, BN, PP, HDPE, PVDF) O-Rings available.

SKU	DESCRIPTION
PMF1428-2B	1/4-28 1/8 Barb Bulkhead Tank Flange
PMF2M-1	1/8 NPS-1/16 Bulkhead Tank Flange
PMF2M-2	1/8 NPS-1/8 Bulkhead Tank Flange
PMF2M-332	1/8 NPS-3/32 Bulkhead Tank Flange
PMF2M-3	1/8 NPS-3/16 Bulkhead Tank Flange
PMF2M-4	1/8 NPS-1/4 Bulkhead Tank Flange
PMF4M-1	1/4 NPS-1/16 Bulkhead Tank Flange
PMF4M-2	1/4 NPS-1/8 Bulkhead Tank Flange
PMF4M-332	1/4 NPS-3/32 Bulkhead Tank Flange
PMF4M-3	1/4 NPS-3/16 Bulkhead Tank Flange
PMF4M-4	1/4 NPS-1/4 Bulkhead Tank Flange
PMF4M-532	1/4 NPS-5/32 Bulkhead Tank Flange
PMF4M-5	1/4 NPS-5/16 Bulkhead Tank Flange
PMF4M-6	1/4 NPS-3/8 Bulkhead Tank Flange
PMF4M-8	1/4 NPS-1/2 Bulkhead Tank Flange

SKU	DESCRIPTION
PMF516-1	5/16-24 by 1/16 Bulkhead Tank Flange
PMF516-2	5/16-24 by 1/8 Barb Bulkhead Tank Flange
PMF516-332	5/16-24 by 3/32 Bulkhead Tank Flange
PMF516-3	5/16-24 by 3/16 Bulkhead Tank Flange
PMF516-4	5/16-24 by 1/4 Bulkhead Tank Flange
PMF516-532	5/16-24 by 5/32 Bulkhead Tank Flange

## PC-IG SERIES- BULKHEAD



PC-IG Series is a reducing and equal bulkhead made of Black and White Nylon and Gray Polypropylene. Barb sizes are 1/16", 1/8", and .170" ID tubing. In addition, the external threads for panel mounting are 1/4-28" and a nut is supplied. The maximum supply pressure is 125 psi and the working temperature ranges are -50° F to 180° F for Nylon and -40° F to 200° F for Polypropylene.

SKU	DESCRIPTION
PC-IG-170B-BN	.170 Barb Black Nylon Bulkhead
PC-IG-170B-GYP	.170 Barb Gray Polypropylene Bulkhead
PC-IG-170B-WN	.170 Barb White Nylon Bulkhead
PC-IG-170BX1B-BN	.170 BY .062 Barb Black Nylon Bulkhead
PC-IG-170BX1B-GYP	.170 BY .062 Barb Gray Polypropylene Bulkhead
PC-IG-170X1B-WN	.170 BY .062 Barb White Nylon Bulkhead
PC-IG-1B-BN	.062 Barb Black Nylon Bulkhead
PC-IG-1B-GYP	.062 Barb Gray Polypropylene Bulkhead
PC-IG-1B-WN	.062 Barb White Nylon Bulkhead
PC-IG-2B-BN	.125 Barb Black Nylon Bulkhead
PC-IG-2B-GYP	.125 Barb Gray Polypropylene Bulkhead
PC-IG-2B-WN	.125 Barb White Nylon Bulkhead
PC-IG-2BX1B-BN	.125 BY .062 Barb Black Nylon Bulkhead
PC-IG-2BX1B-GYP	.125 BY .062 Barb Gray Polypropylene Bulkhead





PC-S SERIES

PC-S Series is a Panel mount reduction Bulkhead made of animal-free natural Polypropylene and White Nylon. The barb sizes are 1/16", 3/32", and 1/8". In addition, the panel mount connector sizes are 10-32" and 1/4-28". A Nylon nut is standard but a Stainless Steel nut is optional.

SKU	DESCRIPTION
PC-S10-1B332B-NPP	10-32 with 1/16 by 3/32 Natural Polypropylene Bulkhead
PC-S10-1B332B-WN	10-32 with 1/16 by 3/32 White Nylon Bulkhead
PC-S10-1B-NPP	10-32 with 1/16 Barb Natural Polypropylene Bulkhead
PC-S10-1B-WN	10-32 with 1/16 Barb White Nylon Bulkhead
PC-S10-332B-NPP	10-32 with 3/32 Barb Natural Polypropylene Bulkhead
PC-S10-332B-WN	10-32 with 3/32 by 3/32 White Nylon Bulkhead
PC-S14-1B2B-NPP	1/4-28 with 1/16 by 1/8 Natural Polypropylene Bulkhead
PC-S14-1B2B-WN	1/4-28 with 1/16 by 1/8 White Nylon Bulkhead
PC-S14-2B-NPP	1/4-28 with 1/8 Barb Natural Polypropylene Bulkhead
PC-S14-2B-WN	1/4-28 with 1/8 by 1/8 White Nylon Bulkhead
PC-S14-332B2B-NPP	1/4-28 with 1/16 by 1/8 Natural Polypropylene Bulkhead
PC-S14-332B2B-WN	1/4-28 with 1/16 by 1/8 White Nylon Bulkhead



MBR SERIES

The MBR Panel Mounting Bulkhead Series Nylon, Polypropylene, or PVDF in 10-32 or 1/4-28 UNF Threads. All Bulkheads are listed showing the outside panel first with the second being on the inside of the panel.

SKU	Description
MBR10-1B332B	10-32 1/16 Barb by 3/32 Barb Bulkhead
MBR10-1B	10-32 1/16 Barb by 1/16 Barb Bulkhead
MBR10-332B	10-32 3/32 Barb by 3/32 Barb Bulkhead
MBR14-1B2B	1/4-28 1/16 Barb by 1/8 Barb Bulkhead
MBR14-2B	1/4-28 1/8 Barb by 1/8 Barb Bulkhead
MBR14-332B2B	1/4-28 3/32 Barb by 1/8 Barb Bulkhead

**MBF SERIES- PANEL MOUNT BULKHEAD**

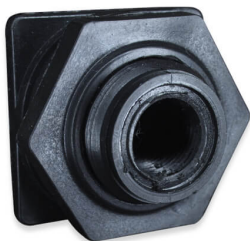


The MBF Series are bulkheads with panel mountings of 5/16-24 UNF threads, 1/8" and 1/4" NPS threads, and a mounting flange. The first barb size is outside the panel, and the second is on the inside. In addition, the MBF Series is available in Black Nylon, Natural Nylon, Polypropylene, and PVDF. Barb sizes are 1/16", 3/32", 1/8", 5/32", 3/16" and 1/4". (order as BN, NN, PP, PVDF)

SKU	Description
MBF2-1B3B	1/8 NPS-1/16 by 3/16 Bulkhead
MBF2-1B4B	1/8 NPS-1/16 by 1/4 Bulkhead
MBF2-2B3B	1/8 NPS-1/8 by 3/16 Bulkhead
MBF2-2B4B	1/8 NPS-1/8 by 1/4 Bulkhead
MBF2-3323B	1/8 NPS-3/32 by 3/16 Bulkhead
MBF2-3B	1/8 NPS-3/16 by 3/16 Bulkhead
MBF2-3B4B	1/8 NPS-3/16 by 1/4 Bulkhead
MBF2-4B	1/8 NPS-1/4 by 1/4 Bulkhead
MBF2-532B3B	1/8 NPS-5/32 by 3/16 Bulkhead
MBF2-532B4B	1/8 NPS-5/32 by 1/4 Bulkhead
MBF4-1B3B	1/4 NPS-1/16 by 3/16 Bulkhead
MBF4-1B4B	1/4 NPS-1/16 by 1/4 Bulkhead
MBF4-2B3B	1/4 NPS-1/8 by 3/16 Bulkhead
MBF4-2B4B	1/4 NPS-1/8 by 1/4 Bulkhead
MBF4-332B3B	1/4 NPS-3/32 by 3/16 Bulkhead
MBF4-332B4B	1/4 NPS-3/32 by 1/4 Bulkhead
MBF4-3B4B	1/4 NPS-3/16 by 1/4 Bulkhead
MBF4-3B	1/4 NPS-3/16 by 3/16 Bulkhead
MBF4-4B4B	1/4 NPS-1/4 by 1/4 Bulkhead
MBF4-4B516B	1/4 NPS-1/4 by 5/16 Bulkhead
MBF4-4B6B	1/4 NPS-1/4 by 3/8 Bulkhead
MBF4-516B6B	1/4 NPS-5/16 by 3/8 Bulkhead
MBF4-532B3B	1/4 NPS-5/32 by 3/16 Bulkhead
MBF4-532B4B	1/4 NPS-5/32 by 1/4 Bulkhead
MBF4-5B5B	1/4 NPS-5/16 by 5/16 Bulkhead
MBF4-6B6B	1/4 NPS-3/8 by 3/8 Bulkhead
MBF516-1B332B	5/16-24 UNF 1/16 by 3/32 Bulkhead
MBF516-1B3B	5/16-24 UNF 1/16 by 3/16 Bulkhead
MBF516-2B3B	5/16-24 UNF 1/8 by 3/16 Bulkhead

SKU	Description
MBF516-2B532B	5/16-24 UNF 1/8 by 3/32 Bulkhead
MBF516-332B3B	5/16-24 UNF 3/32 by 3/16 Bulkhead
MBF516-332B532B	5/16-24 UNF 3/32 by 5/32 Bulkhead
MBF516-3B	5/16-24 UNF 3/16 by 3/16 Bulkhead
MBF516-532	5/16-24 UNF 5/32 by 5/32 Bulkhead

BHF SERIES



The BHF Series Bulkheads are made of Black Polypropylene ranging from ½ inch to 4-inch Female NPT sizes with 3/16 inch Santoprene Seals.

SKU	Description
BHF-12	1/2 inch Female Polypropylene Bulkhead
BHF-16	1 inch Female Polypropylene Bulkhead
BHF-34	3/4 inch Female Polypropylene Bulkhead

BHUDC SERIES



The **BHUDC Series Bulkheads** are **Manufactured by *Pneuline Supply, Inc.*** in-house and offer a unique flat side for a Greenlee D punch, thus avoiding the possibility for the Bulkhead to turn. Bulkheads are assigned sizes from the outside of the panel to the inside. Available in 1/8 inch, 1/4 inch, and 3/8 inch Hose Barb sizes, or any combination. The 3/8 inch panel fitting does not have a flattened side. Also, the materials available are Natural Nylon, Black Nylon, Polypropylene, PVDF, and Acetal. Zinc-plated nuts are available for Nylon bulkheads, and Nylon nuts are available for all other bulkheads.

SKU	Description	Materials
BHUDC-2B2B	1/8 inch Barb by 1/8 inch Barb Bulkhead	Nylon (Natural or Black) Glass-Filled Nylon (Natural or Black) Polypropylene Kynar®
BHUDC-2B4B	1/8 inch Barb by 1/4 inch Barb Bulkhead	Nylon (Natural or Black) Glass-Filled Nylon (Natural or Black) Polypropylene Kynar®
BHUDC-4B4B	1/4 inch by 1/4 inch Bulkhead	Nylon (Natural or Black) Glass-Filled Nylon (Natural or Black) Polypropylene Kynar®
BHUDC-4B6B	1/4 inch Barb by 3/8 inch Barb Bulkhead	Nylon (Natural or Black) Glass-Filled Nylon (Natural or Black) Polypropylene Kynar®
BHUDC-6B6B	3/8 inch Barb by 3/8 inch Barb Bulkhead	Nylon (Natural or Black) Glass-Filled Nylon (Natural or Black) Polypropylene Kynar®