



## **PNEULINE SUPPLY**

Pneuline Supply manufactures high-quality products with ISO 9001:2015 standards, ensuring precision and reliability. With customizable features—including cleanroom production, diverse materials, and various sizes—we tailor solutions to meet unique customer needs. Our commitment is to consistently deliver excellence, providing superior products and service to every customer.

## CE-14PG-2B SERIES



Designed for secure and leak-resistant connections, this **1/4-inch compression elbow** seamlessly transitions to a **1/8-inch barb**, ensuring reliable fluid transfer in critical applications. The **threaded design** enhances stability, making it an ideal choice for laboratory, medical, and industrial systems requiring precise and durable fittings.



## 91557 SERIES

This versatile pickup tube features a **1/4-inch compression fitting** to a **1/8-inch barb** and comes equipped with a **strainer** for optimal filtration. Designed for use in **fluidic transfers**, this tube is suitable for both **laboratory and medical applications**. Available in sizes up to **13 inches long**, with **shorter options**, it can be made with or without a cap, ensuring compatibility with various systems.

## BHUC SERIES



BHUC is a 1/2 Barbed bulkhead with an 11/16-24 Thread for the panel mount. 18 MM hole for the mounting through hole. Molded in several materials: Acetal, PVDF, and Polypropylene. Rated at 50 PSI. This bulkhead comes with a nickel-plated nut or with an Acetal nut.

SKU	Description	Materials
BHUC-8B	1/2 inch Barb Bulkhead	Nylon Acetal Polypropylene Kynar®

## MPV-L SERIES | MEDICAL GRADE LUER CHECK VALVES

Engineered for **critical medical and laboratory applications**, our **MPV Luer Series Medical Grade Plastic Check Valves** are **manufactured, assembled, and rigorously tested at 15 PSI in a certified Class 7 Cleanroom environment**, ensuring unmatched contamination control and reliability.

**Ultra-Pure, High-Performance Materials** Crafted from premium **Polypropylene, Polycarbonate, Radiation-Stable Polycarbonate, and Kynar® 720**, our check valves deliver **exceptional chemical resistance and durability** for demanding medical, pharmaceutical, and laboratory environments.

**Precision-Designed for Sterile Applications** Pre-packaged and produced under strict cleanroom conditions, these valves provide **consistent performance where purity matters most.**

### 4 Main Connector Options:

- Male Inlet Luer with Rotating Collar to Female Luer
- Male Inlet Rotating Collar to Male Rotating Collar
- Female Inlet Luer Lock to Female Luer Lock
- Female Inlet Luer Lock to Male Slip

Barb to \*\*\*

**Diaphragm Options:** Silicone

**Flow Direction:** Inlet to Outlet

*\*\*\*Custom Options: These Luers can be manufactured to fit with any of our Barb Connectors on the opposing end.*

*Barb Size options: 1/8 inch, 3/16 inch, 1/4 inch, 5/16 inch, 3/8 inch*

SKU	Luers	Body Material	Diaphragm
MPV-FLL-BODY-DIAPHRAGM	IN: Female Luer OUT: Female Luer	Polycarbonate Polypropylene Kynar®	Silicone USP Class VI
MPV-MLLR-BODY-DIAPHRAGM	IN: Male Luer OUT: Male Luer w/Rotating Collar	Polycarbonate Polypropylene Kynar®	Silicone USP Class VI
MPV-FLL-MLLR-BODY-DIAPHRAGM	IN: Female Luer OUT: Male Luer w/ Rotating Collar	Polycarbonate Polypropylene Kynar®	Silicone USP Class VI
MPV-MLLR-FLL-BODY-DIAPHRAGM	IN: Male Luer Out: Female Luer	Polycarbonate Polypropylene Kynar®	Silicone USP Class VI

**Cleanroom Class 8 Production & Manufacturing Available**



## PSSV SERIES

Precision-crafted in a **Class 7 Cleanroom**, our **PSSV Series Self-Sealing Check Valves** provide superior **back-flow prevention** for **critical air and fluid applications**. Designed for **medical, respiratory, ventilator, and bio-pharmaceutical** environments, these valves ensure **high-purity performance and contamination control**.

### ✓ Reliable Back-Flow Prevention

- Innovative **retractable silicone disk** for secure sealing
- Designed for pressures **under 50 PSI**, ensuring dependable flow control

### ✓ High-Quality Materials for Medical-Grade Durability: Polycarbonate & Polypropylene housings

Additional material options: **Radiation-Stable Polycarbonate & PVDF**

### ✓ Versatile Sterilization Compatibility:

- **Gamma Sterilization (6 Mrads)**
- **ETO Sterilization** for medical-grade cleanliness

### ✓ Customizable Designs for Your Unique Needs:

- **Barbed connectors:** Available for **3/16" ID tubing and 5/16" ID tubing**
- Optional **EPDM sealing material** with qualifying volumes
- **Expanded connection options:** Male & Female **Luer** fittings and **Bond-in connections** tailored to volume requirements

Engineered for **precision, purity, and flexibility**, the **PSSV Series** is the trusted solution for demanding medical and fluid-handling applications.

- *Open pressure is approximately .20 PSI*
- *Flow is 56.29 l/h*
- *Crack Pressure is .001 PSI*

[View our Flyer Here](#)

SKU	Description	Diaphragm
PSSV-3B-PP	3/16 inch by 3/16 inch Polypropylene Barbed Self-Sealing Check Valve	Silicone EPDM
PSSV-3B-PC	3/16 inch by 3/16 inch Polycarbonate Barbed Self-Sealing Check Valve	Silicone EPDM
PSSV-5B-PP	5/16 inch by 5/16 inch Polypropylene Barbed Self-Sealing Check Valve	Silicone EPDM
PSSV-5B-PC	5/16 inch by 5/16 inch Polycarbonate Barbed Self-Sealing Check Valve	Silicone EPDM
PSSV-5B3B-PP	5/16 inch by 3/16 inch Polypropylene Barbed Self-Sealing Check Valve	Silicone EPDM
PSSV-5B3B-PC	5/16 inch by 3/16 inch Polycarbonate Barbed Self-Sealing Check Valve	Silicone EPDM



## MPV SERIES | FOOD & BEVERAGE GRADE CHECK VALVES

### High-Performance Plastic Check Valves - Pure, Reliable, and Built for Precision

Crafted from **NSF 51/62 Approved materials**, our plastic check valves are designed specifically for **food and beverage applications**, ensuring safety and compliance without the use of grease or oil—unlike traditional diaphragm valves.

- ✓ **Ideal for:** Food, beverage, water, and laboratory applications
- ✓ **Premium housing materials:** POM-Celcon, M90®, and PVDF (Arkema-Kynar 720®)
- ✓ **Diaphragm options:** EPDM, Santoprene™, and FDA Viton® disks
- ✓ **Available sizes:** 1/8", 3/16", 1/4", 5/16", and 3/8" barbed valves

Engineered for purity and performance, these valves meet the highest standards for critical applications.

[View Flow and Crack Pressure Data](#)

[Download The Flyer](#)

SKU	Description	Body	Diaphragm
MPV-2B-Body-Diaphragm	1/8" Barbed Inline Check Valve Body Diaphragm	Acetal	FDA Viton® Silicone EPDM
MPV-3B-Body-Diaphragm	3/16" Barbed Inline Check Valve Body Diaphragm	Acetal	FDA Viton® Silicone EPDM
MPV-4BH-Body-Diaphragm	1/4" Barbed Hi-Flow Inline Check Valve Body Diaphragm	Acetal	FDA Viton® Silicone EPDM
MPV-5B-Body-Diaphragm	5/16" Barbed Hi-Flow Inline Check Valve Body Diaphragm	Acetal	FDA Viton® Silicone EPDM
MPV-6B-Body-Diaphragm	3/8" Barbed High-Flow Inline Check Valve Body Diaphragm	Acetal	FDA Viton® Silicone EPDM



## MPV SERIES | AUTOMOTIVE GRADE CHECK VALVES

At **Pneuline Supply**, we craft high-performance **Plastic Check Valves** designed specifically for **automotive applications**—offering durability, efficiency, and reliable fluid control.

### Versatile Material Options:

- Inlets: Choose from **Natural Nylon** or **Glass-Filled Natural Nylon**
- Outlets: Available in **Black Nylon** or **Glass-Filled Black Nylon**

### Optimized Flow Performance:

- **Standard Flow:** 1/8", 3/16", and 1/4" barbed connectors
- **High Flow:** 1/4", 5/16", and 3/8" barbed connectors

### Premium Diaphragm Choices:

- **Fluorosilicone** – Exceptional temperature & chemical resistance
- **EPDM** – Reliable sealing and flexibility

**Custom Laser Part Marking:** Tailor your valves with unique **part number sequencing, lot numbers, or company branding**, ensuring seamless identification and traceability.

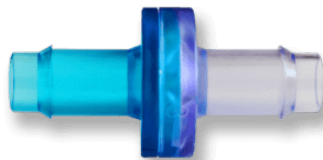
Built for **precision, reliability, and customization**, these check valves meet the highest industry standards for automotive performance.

[View Flow and Crack Pressure Data](#)

[Download Our Flyer](#)

SKU	Description	Body	Diaphragm
MPV-2B-Body-Diaphragm	1/8" Barbed Inline Check Valve Body Diaphragm	Nylon Glass-Filled Nylon Polypropylene Kynar®	EPDM Fluorosilicone
MPV-3B-Body-Diaphragm	3/16" Barbed Inline Check Valve Body Diaphragm	Nylon Glass-Filled Nylon Polypropylene Kynar®	EPDM Fluorosilicone
MPV-4BH-Body-Diaphragm	1/4" Barbed Hi-Flow Inline Check Valve Body Diaphragm	Nylon Glass-Filled Nylon Polypropylene Kynar®	EPDM Fluorosilicone
MPV-4B-Body-Diaphragm	1/4" Barbed Stand-Flow Inline Check Valve Body Diaphragm	Nylon Glass-Filled Nylon Polypropylene Kynar®	EPDM Fluorosilicone
MPV-5B-Body-Diaphragm	5/16" Barbed Hi-Flow Inline Check Valve Body Diaphragm	Nylon Glass-Filled Nylon Polypropylene Kynar®	EPDM Fluorosilicone
MPV-6B-Body-Diaphragm	3/8" Barbed High-Flow Inline Check Valve Body Diaphragm	Nylon Glass-Filled Nylon Polypropylene Kynar®	EPDM Fluorosilicone

## MPV SERIES | MEDICAL GRADE CHECK VALVES



Manufactured and rigorously tested in a **Class 7 Cleanroom**, our **MPV Series Medical Grade Check Valves** are built to meet the highest standards for **medical, laboratory, and bio-pharmaceutical applications**. Each valve undergoes **100% Leak Decay Testing** in our cleanroom environment, ensuring unmatched reliability and contamination control.

### Premium Resin Options for Critical Applications

- **Nylon, Polypropylene, Polycarbonate, & Radiation-Stable Polycarbonate** – Ensuring durability and performance
- **Kynar® 720** – A trusted material for medical fluid handling
- **Custom resins are available** upon request for specialized needs

**Optimized High-Flow Sizes, 3/16", 5/16", and 3/8"** barbed valves, designed for superior flow control

### USP Class VI & FDA-Compliant Diaphragm Choices

- **Silicone USP Class VI** – Ideal for medical-grade applications
- **FDA Viton®** – Reliable sealing and chemical resistance

**Custom Molding for Tailored Solutions-** We offer **fully customizable resin and diaphragm options** to meet unique customer requirements, ensuring precision engineering for specialized applications.

Built for **purity, performance, and customization**, the MPV Series delivers exceptional quality for critical environments.

[View our Check Valve Flow and Crack Pressure Data](#)

[Download the MPV Series Flyer](#)

SKU	Description	Body	Diaphragm
MPV-2B-Body-Diaphragm	1/8" Barbed Inline Check Valve Body Diaphragm	Nylon Polycarbonate Polypropylene Kynar®	USP Class VI Silicone
MPV-3B-Body-Diaphragm	3/16" Barbed Inline Check Valve Body Diaphragm	Nylon Polycarbonate Polypropylene Kynar®	USP Class VI Silicone

MPV-4B-Body-Diaphragm	1/4" Barbed Stand-Flow Inline Check Valve Body Diaphragm	Nylon Polycarbonate USP Class VI Polypropylene Silicone Kynar®
MPV-5B-Body-Diaphragm	5/16" Barbed Hi-Flow Inline Check Valve Body Diaphragm	Nylon Polycarbonate USP Class VI Polypropylene Silicone Kynar®
MPV-6B-Body-Diaphragm	3/8" Barbed High-Flow Inline Check Valve Body Diaphragm	Nylon Polycarbonate USP Class VI Polypropylene Silicone Kynar®
Cleanroom Class 8 Production and Manufacturing		



## C-342-6 SERIES| STRAINER

**Introducing the C-342-6 Series Pickup Strainer**—your ultimate solution for preventing debris from flowing upward in tube lines, ensuring a clean and efficient system. Engineered for reliability and versatility, this strainer is available in **Polypropylene, Nylon, and Acetal** materials to suit a range of applications.

Designed to fit seamlessly into various setups, the **multi-barbed hose sizes** come in **1/8, 3/16, 1/4, 5/16, and 3/8 inches**, offering a secure and leak-free connection. The integrated **polyester strainers**, available in a broad range of **65 to 1000 microns**, provide superior filtration, safeguarding your system against unwanted particles.

Upgrade your filtration system with the **C-342-6 Series**, where durability meets precision. [Request a quote today](#) and experience **enhanced performance firsthand!**

## 4F4B SERIES | PLASTIC CONNECTOR



**The 4F4B Series FNPT to 1/4" Barbed Plastic Connector**—a precision-engineered solution designed for secure, leak-free connections in fluid transfer applications. This versatile connector features **FNPT threading**, ensuring a reliable, tight fit, while the **1/4-inch barbed end** offers compatibility with a range of tubing sizes.

Manufactured from high-quality **Kynar (PVDF)** and **HDPE** materials, the 4F4B Series delivers exceptional durability and resistance to chemicals, abrasion, and environmental stress. **Kynar** provides superior strength and thermal stability, making it ideal for high-demand applications, while **HDPE** offers lightweight resilience with excellent corrosion resistance.

Whether used in industrial, medical, or laboratory settings, the **4F4B Series** ensures optimal flow control and secure fluid conveyance. **Upgrade your system today with the reliability and performance of this premium plastic connector!**

---

## GEN1 SERIES BARBED FITTINGS



GEN1 Series, manufactured by Pneuline, are single-barbed plastic fittings without a parting line on the barb.

[Click Here](#) to View Material Options.

### ***Choosing the Right Material for Your Application***

- **Black Nylon** – Built to withstand the sun! With UV resistance, it's perfect for outdoor use.
- **Glass-Filled Nylon** – Stronger and liquid-resistant, ideal for water-heavy environments and rugged motor vehicles like motorcycles, boats, and cars.
- **PVDF, Polypropylene & Polycarbonate** – These **Class 6 USP** materials meet the highest standards for medical and bio-pharmaceutical applications and are completely bovine-free.
- **Acetal** – Certified for **NSF 51/61** standards, making it a trusted choice for potable water and food-related applications.

No matter the industry, we have materials designed for durability, compliance, and performance.

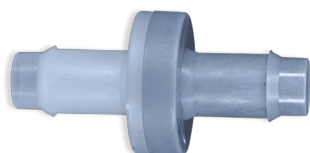
### ***Available Connection Types:***

- ✓ **Tees** – For branching flow directions
- ✓ **Elbows** – For smooth angle adjustments
- ✓ **Straight Connections** – For direct and seamless flow

Our products can be manufactured in **Class 7 cleanroom environment**, ensuring the highest levels of cleanliness and contamination control.

**GEN1 Series** offers barbed fittings in a range of sizes—**1/16", 1/8", 3/16", 1/4", and 3/8"**

## MPV SERIES | INDUSTRIAL GRADE CHECK VALVES



At **Pneuline Supply**, we manufacture **MPV Series Plastic Diaphragm Check Valves**, built for **exceptional performance** across diverse applications. Whether controlling **ozone, pools, spas, printing, inkjet systems, wound therapy, air mattresses, vacuum systems, or corrosive liquids**, these one-way valves ensure **smooth operation and uncompromising durability**.

**Designed for High-Purity & Specialized Use** Our exclusive **PVDF: Kynar® 720** valves—paired with **FFKM Kalrez® 4079 diaphragms**—deliver industry-leading chemical resistance and reliability, making them ideal for demanding environments.

**Versatile & Proven Performance** Trusted across **medical, industrial, and fluid-handling systems**, our valves excel in **corrosive, high-pressure, and controlled environments**, ensuring longevity and efficiency.

Upgrade to a **higher standard of precision and durability** with MPV Series Check Valves—engineered to perform when reliability matters most.

[Download Our Flyer](#)

SKU	Description	Body	Diaphragm
MPV-2B-Body-Diaphragm	1/8" Barbed Inline Check Valve Body Diaphragm	Kynar®	
		Nylon	Kalrez®
		Glass-Filled Nylon	FKM
		Acetal	Fluorsilicone
MPV-3B-Body-Diaphragm	3/16" Barbed Inline Check Valve Body Diaphragm	Polypropylene	
		Kynar®	
		Nylon	Kalrez®
		Glass-Filled Nylon	FKM
		Acetal	Fluorsilicone
		Polypropylene	

SKU	Description	Body	Diaphragm
MPV-4B-Body-Diaphragm	1/4" Barbed Stand-Flow Inline Check Valve Body Diaphragm	Kynar®	
		Nylon	Kalrez®
		Glass-Filled Nylon	FKM
		Acetal	Fluorsilicone
		Polypropylene	
MPV-4BH-Body-Diaphragm	1/4" Barbed Hi-Flow Inline Check Valve Body Diaphragm	Kynar®	
		Nylon	Kalrez®
		Glass-Filled Nylon	FKM
		Acetal	Fluorsilicone
		Polypropylene	
MPV-5B-Body-Diaphragm	5/16" Barbed Hi-Flow Inline Check Valve Body Diaphragm	Kynar®	
		Nylon	Kalrez®
		Glass-Filled Nylon	FKM
		Acetal	Fluorsilicone
		Polypropylene	
MPV-6B-Body-Diaphragm	3/8" Barbed High-Flow Inline Check Valve Body Diaphragm	Kynar®	
		Nylon	Kalrez®
		Glass-Filled Nylon	FKM
		Acetal	Fluorsilicone
		Polypropylene	

## LD SERIES | LAB DISCONNECTS



*Pneuline Supply, Inc.* manufactures these low-pressure Lab Disconnects made from either Polyethylene or Polypropylene which are used in laboratories for vacuum applications, low-pressure lines, water lines, and inert gases. They connect various tubing sizes from 1/8 inch, 7/32 inch, 1/4 inch, and .170 ID tube lines. They can be purchased with a Viton® or EPDM disc Check Valve, or with a porous Polyethylene filter. A unique pick-up tube line assembly for use in drawing air or water from containers is also available.

SKU	Description
LD-F-LDPE	Female LDPE Lab Disconnect
LD-F-PP	Female Polypropylene Lab Disconnect
LD-LDPE	Male/Female LDPE Complete Lab Disconnect
LD-M-LDPE	Male LDPE Lab Disconnect
LD-M-NB-PP	Male No-Barb Polypropylene Lab Disconnect

## WPF SERIES | PLASTIC INLINE FILTERS



Manufactured by **Pneuline Supply**, the **WPF Series Filters** are tailored to meet **custom specifications per customer requirements**, ensuring optimal filtration for laboratory, medical, and industrial applications.

### Versatile Connector Choices for Seamless Integration

The WPF Series Filters come equipped with **barbed connectors**, available in multiple configurations:

- **1/8, 3/16, 1/4, 5/16, and 3/8-inch barbs**
- **Male and Female Luer fittings**, designed to mix and match seamlessly with **barbed connectors or opposing luer fittings**
- **ISO 594-compatible luer connections**, ensuring universal compatibility across various fluid transfer applications

### Durable Filter Housings for Long-Lasting Performance

To accommodate diverse environmental and chemical resistance needs, our filter housings are available in **high-performance materials**, including:

- **Polypropylene** – Chemical-resistant and lightweight
- **Polycarbonate** – Transparent for easy inspection
- **Nylon** – Durable and abrasion-resistant
- **Acetal** – High mechanical strength and dimensional stability
- **PVDF** – Excellent chemical and thermal resistance

### Superior Filtration Options—Tailored to Your Needs

Operating at **50 PSI**, the WPF Series incorporates a **flat filter welded into the housing**, available in a variety of materials and micron ratings:

#### Fabric Filters (Polyester & Polypropylene)

Offering **optional PTFE or PVDF upgrades**, these filters ensure highly efficient particle retention with sizes ranging from:

- **5, 10, 20, 44, 64, 75, 105, 150, 177, 200, and 250 microns**

#### Porous High-Density Polyethylene Filters

With a **hydrophobic nature**, these filters effectively **block most fluids**, ensuring optimal separation. Available sizes include:

- **15-45 microns**
- **45-90 microns**
- **90-160 microns**

### Stainless Steel Filters—For Maximum Durability

Available in **304 and 316L stainless steel**, offering superior filtration strength and longevity.

- **304 Stainless Steel:**
- **61 microns (250 mesh)**

- 74 microns (200 mesh)
- 103 microns (150 mesh)
- 149 microns (100 mesh)

**316L Stainless Steel:**

- 44 microns

Optimize your filtration system with **Pneuline Supply's WPF Series Filters—engineered for efficiency, built for excellence. Contact us today to customize your order and elevate your fluid control solutions!**

---

SKU	Description	Body Material Option	Filter Size and Material
WPF-2B-(BODY)-(FILTER)	1/8" Barbed Plastic Filter (BODY) (FILTER)	Acetal (Black Available) Nylon (Black Available) Polypropylene Kynar® Polycarbonate	150 Micron Kynar
			75 Micron Nylon
			150 Micron Polypropylene
			177 Micron Polypropylene
			5 Micron Polyester (MediFab Available)
			10 Micron Polyester
			20 Micron Polyester
			30 Micron Polyester
			65 Micron Polyester
			73 Micron Polyester
			105 Micron Polyester
			130 Micron Polyester
			150 Micron Polyester
			180 Micron Polyester
			250 Micron Polyester
			1000 Micron Polyester
			55 Micron Stainless Steel
			61 Micron Stainless Steel
			74 Micron Stainless Steel
			103 Micron Stainless Steel
			149 Micron Stainless Steel
			150 Micron Stainless Steel
			250 Micron Stainless Steel

SKU	Description	Body Material Option	Filter Size and Material
WPF-3B-(BODY)-(FILTER)	3/16" Barbed Plastic Filter (BODY) (FILTER)	Acetal (Black Available) Nylon (Black Available) Polypropylene Kynar® Polycarbonate	150 Micron Kynar
			75 Micron Nylon
			150 Micron Polypropylene
			177 Micron Polypropylene
			5 Micron Polyester (MediFab Available)
			10 Micron Polyester
			20 Micron Polyester
			30 Micron Polyester
			65 Micron Polyester
			73 Micron Polyester
			105 Micron Polyester
			130 Micron Polyester
			150 Micron Polyester
			180 Micron Polyester
			250 Micron Polyester
			1000 Micron Polyester
			55 Micron Stainless Steel
			61 Micron Stainless Steel
			74 Micron Stainless Steel
			103 Micron Stainless Steel
			149 Micron Stainless Steel
			150 Micron Stainless Steel
			250 Micron Stainless Steel

SKU	Description	Body Material Option	Filter Size and Material
WPF-4B-(BODY)-(FILTER)	1/4" Barbed Plastic Filter (BODY) (FILTER)	Acetal (Black Available) Nylon (Black Available) Polypropylene Kynar® Polycarbonate	150 Micron Kynar
			75 Micron Nylon
			150 Micron Polypropylene
			177 Micron Polypropylene
			5 Micron Polyester (MediFab Available)
			10 Micron Polyester
			20 Micron Polyester
			30 Micron Polyester
			65 Micron Polyester
			73 Micron Polyester
			105 Micron Polyester
			130 Micron Polyester
			150 Micron Polyester
			180 Micron Polyester
			250 Micron Polyester
			1000 Micron Polyester
			55 Micron Stainless Steel
			61 Micron Stainless Steel
			74 Micron Stainless Steel
			103 Micron Stainless Steel
			149 Micron Stainless Steel
			150 Micron Stainless Steel
			250 Micron Stainless Steel

SKU	Description	Body Material Option	Filter Size and Material
WPF-5B-(BODY)-(FILTER)	5/16" Barbed Plastic Filter (BODY) (FILTER)	Acetal (Black Available) Nylon (Black Available) Polypropylene Kynar® Polycarbonate	150 Micron Kynar
			75 Micron Nylon
			150 Micron Polypropylene
			177 Micron Polypropylene
			5 Micron Polyester (MediFab Available)
			10 Micron Polyester
			20 Micron Polyester
			30 Micron Polyester
			65 Micron Polyester
			73 Micron Polyester
			105 Micron Polyester
			130 Micron Polyester
			150 Micron Polyester
			180 Micron Polyester
			250 Micron Polyester
			1000 Micron Polyester
			55 Micron Stainless Steel
			61 Micron Stainless Steel
			74 Micron Stainless Steel
			103 Micron Stainless Steel
			149 Micron Stainless Steel
			150 Micron Stainless Steel
			250 Micron Stainless Steel

## BHUTC SERIES



The **BHUTC Series Bulkheads** are **Manufactured by Pneuline Supply, Inc.** in-house and offer a unique flat side for a Greenlee D punch, thus avoiding the possibility for the Bulkhead to turn. Bulkheads are assigned sizes from the outside of the panel to the inside. Available in 1/8 inch, 1/4 inch, and 3/8 inch Hose Barb sizes, or any combination. The 3/8 inch panel fitting does not have a flattened side. Also, the materials available are Natural Nylon, Black Nylon, Polypropylene, PVDF, and Acetal. Zinc-plated nuts are available for Nylon bulkheads, and Nylon nuts are available for all other bulkheads.

SKU	Description	Materials
BHUTC-2B2B	1/8 inch Barb by 1/8 inch Barb Bulkhead	Nylon (Natural or Black)
		Glass-Filled Nylon (Natural or Black)
BHUTC-2B4B	1/8 inch Barb by 1/4 inch Barb Bulkhead	Polypropylene
		Kynar®
BHUTC-4B4B	1/4 inch by 1/4 inch Bulkhead	Nylon (Natural or Black)
		Glass-Filled Nylon (Natural or Black)
BHUTC-4B6B	1/4 inch Barb by 3/8 inch Barb Bulkhead	Polypropylene
		Kynar®
BHUTC-6B6B	3/8 inch Barb by 3/8 inch Barb Bulkhead	Nylon (Natural or Black)
		Glass-Filled Nylon (Natural or Black)
		Polypropylene
		Kynar®